

HAVERHILL, MA

HISTORIC DOWNTOWN HAVERHILL, MA • 39-45 WASHINGTON STREET



1,437 SF OF STREET LEVEL RETAIL AVAILABLE

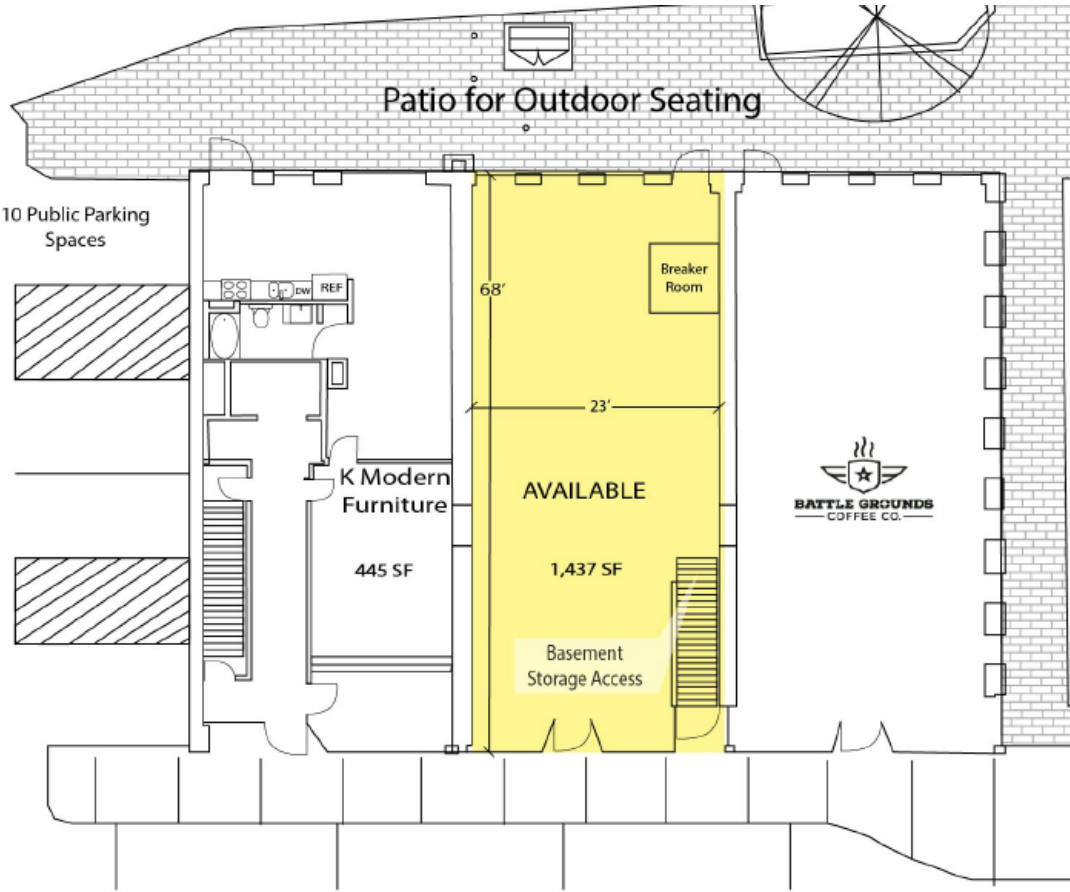
The restoration of the historic Marsh Building is now complete! Three new street level retail spaces have been restored in the historic downtown restaurant district. Eighteen new apartments are leased on the upper stories. Located at 41 Washington Street in downtown historic Haverhill, the one remaining vacancy is 1,437 square feet and boasts high ceilings, tin detail, wainscoting and beautiful historic storefront windows. There is an attached outdoor patio in the rear of the building which is adjacent to a large public parking lot. Street parking is available as well. Battle Grounds Coffee and K Modern Furniture, two vibrant new businesses creating buzz in the downtown, occupy the adjacent retail spaces. The 1,437 square feet space is perfect for food, fitness, retail, or services to serve the local residents and employees. Harbor Place, a new multi-use development on Washington Street with 80 residential units, 58,000 SF of office space and 118,000 SF of retail, restaurant and service and the UMass Lowell satellite campus is now completed and open.

Powers &
Company

Representing Retail Landlords Throughout New England

HISTORIC DOWNTOWN HAVERHILL, MA • 39-45 WASHINGTON STREET

Public Parking Lot
Approximately 67 Spaces



SPECIFICATIONS

Location	39-45 Washington Street, Haverhill, MA
Available Space(s)	1,437 SF
Parking	Adjacent public parking lot and street parking



TENANTS

SQUARE FOOTAGE

1. Battle Grounds Coffee Co.	1,500 SF
2. Available	1,437 SF
3. K Modern Furniture	445 SF

DEMOGRAPHICS

	1 MILE	3 MILES	5 MILES
Population Estimate	27,204	47,644	62,102
Average Household Income	\$65,254	\$74,415	\$80,092
Daytime Population	9,440	15,851	23,761



Local Events:
Holiday Stroll
Art Markets
First Fridays
River Festival

For more information or to schedule a tour please call or email:
Mary Power at 617-694-6922 mary@powersandco.com



Representing Retail Landlords Throughout New England

P.O.Box 435
Lynnfield, MA 01940
(781)334-4661
powersandco.com