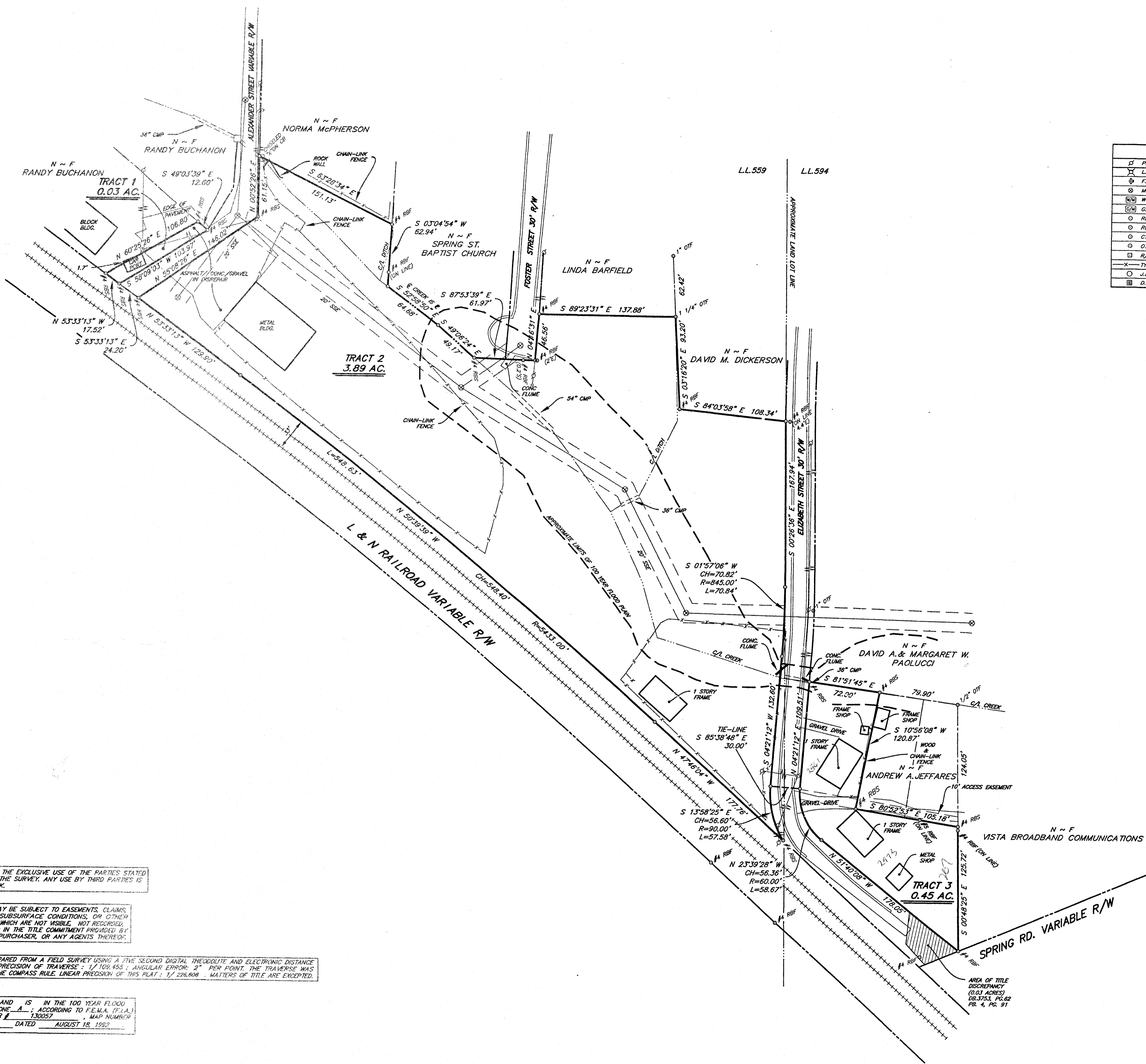


LEGEND	
⊕ P.P. - POWER POLE	⊕ C.B. - CATCH BASIN
⊕ L.P. - LIGHT POLE	⊕ R.C.P. - REINFORCED CONCRETE PIPE
⊕ F.H. - FIRE HYDRANT	⊕ C.M.P. - CORRUGATED METAL PIPE
⊕ M.H. - SANITARY SEWER MANHOLE	⊕ F.F.E. - FINISHED FLOOR ELEVATION
⊕ W.M. - WATER METER	⊕ W.V. - WATER VALVE
⊕ G.M. - GAS METER	⊕ S.B.M. - SOUTHERN BELL MANHOLE
⊕ R.B.S. - REINFORCING BAR SET	⊕ O.P.L. - OVERHEAD POWER LINES
⊕ R.B.F. - REINFORCING BAR FOUND	⊕ H.W. - HEADWALL
⊕ C.T.F. - CRIMP TOP PIPE FOUND	⊕ P.B. - POWERBOX
⊕ O.T.F. - OPEN TOP PIPE FOUND	⊕ W.L. - WATER LINE
⊕ R.O.W. MON. - RIGHT-OF-WAY MONUMENT	⊕ U.T.L. - UNDERGROUND TELEPHONE LINE
⊕ X - TYPE OF FENCE	⊕ G.L. - GAS LINE
⊕ J.B. - JUNCTION BOX	⊕ U.E.L. - UNDERGROUND ELECTRICAL LINE
⊕ D.I. - DROP INLET / YARD INLET	

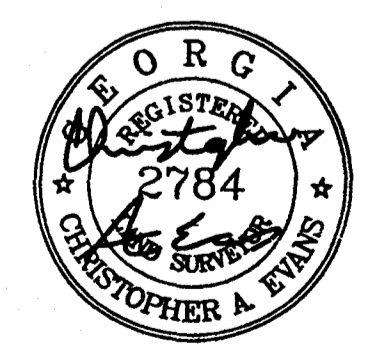


THIS PLAT IS FOR THE EXCLUSIVE USE OF THE PARTIES STATED ON THE FACE OF THE SURVEY. ANY USE BY THIRD PARTIES IS AT THEIR OWN RISK.

THIS PROPERTY MAY BE SUBJECT TO EASEMENTS, CLAIMS, PRESCRIPTIONS, SUBSURFACE CONDITIONS, OR OTHER MATTERS OF TITLE WHICH ARE NOT VISIBLE, NOT RECORDED, OR NOT DISCLOSED IN THE TITLE COMMITMENT PROVIDED BY THE OWNER, THE PURCHASER, OR ANY AGENTS THEREOF.

THIS PLAT IS PREPARED FROM A FIELD SURVEY USING A FIVE SECOND DIGITAL THEODOLITE AND ELECTRONIC DISTANCE METER. LINEAR PRECISION OF TRAVERSE: 1/100,000; ANGULAR ERROR: 2" PER POINT. THE TRAVERSE WAS ADJUSTED USING THE COMPASS RULE. LINEAR PRECISION OF THIS PLAT: 1/226,800. MATTERS OF TITLE ARE EXCEPTED.

THIS PARCEL OF LAND IS IN THE 100 YEAR FLOOD PLAIN AND IS IN ZONE A-; ACCORDING TO F.E.M.A. (F.I.A.) COMMUNITY NUMBER 130057, MAP NUMBER 079F DATED AUGUST 18, 1992.



DATE: 2-25-03 REVISIONS:

SCALE: 1"=50'

DRAWN BY: JHM

CHECKED BY:

429-WHITENER.DWG

GASKINS SURVEYING & ENGINEERING COMPANY

1266 POWDER SPRINGS ROAD MARIETTA, GEORGIA 30064 PHONE: 770-424-7168 FAX: 770-424-7593 www.gsksurvey.com

SURVEY FOR:

M.M. WHITENER

LOCATED IN L.L. 559 & 594
17TH DISTRICT, 2nd SECTION
COBB COUNTY, GA.
CITY OF SMYRNA