



Former QuickHealth

2709 E. 26th Street, Sioux Falls, SD 57103

Property Features

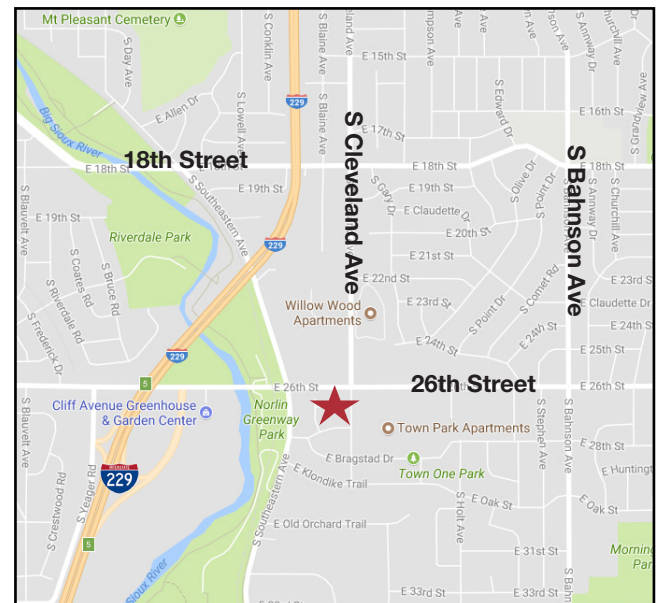
- Building size: 3,292 sq. ft.
- Ample parking
- High-visibility location
- Great signage
- Set up as medical clinic
- Co-listed with Applause Real Estate
- One or more owners are licensed real estate agents in South Dakota

Pricing

- Lease rate: \$16.00/sq. ft. NNN

Location

- Located on the south west corner of the 26th and Cleveland intersection
- Area neighbors include: Hagan Benefits, Wells Fargo, Core Orthopedics, Cherry Creek Grill, Bagel Boy



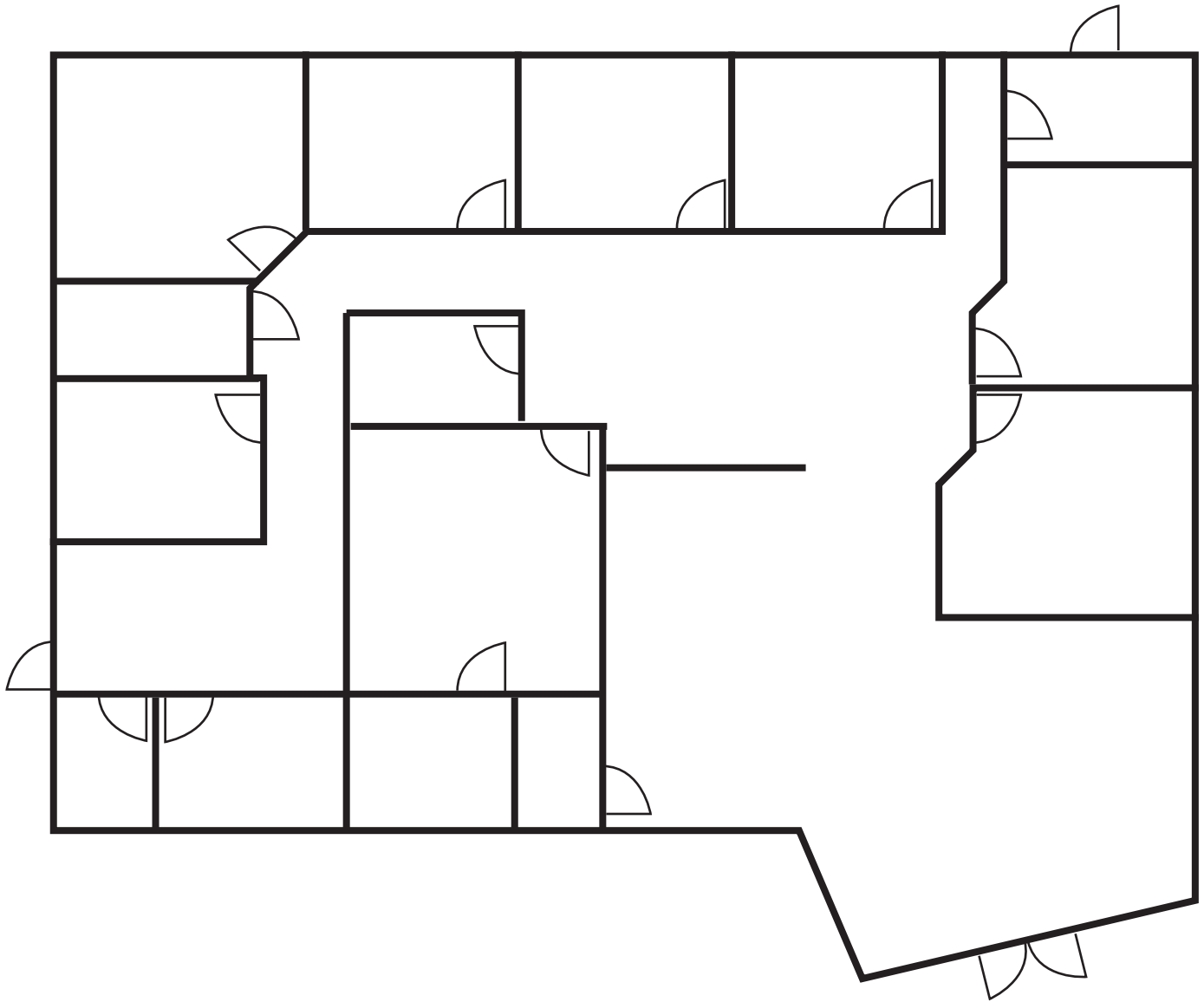
Craig Hagen, CCIM, SIOR

+ 1 605 444 7115 direct

+ 1 605 310 4227 mobile

chagen@naisiouxfalls.com

For Lease
Office Space



For Lease
Office Space

