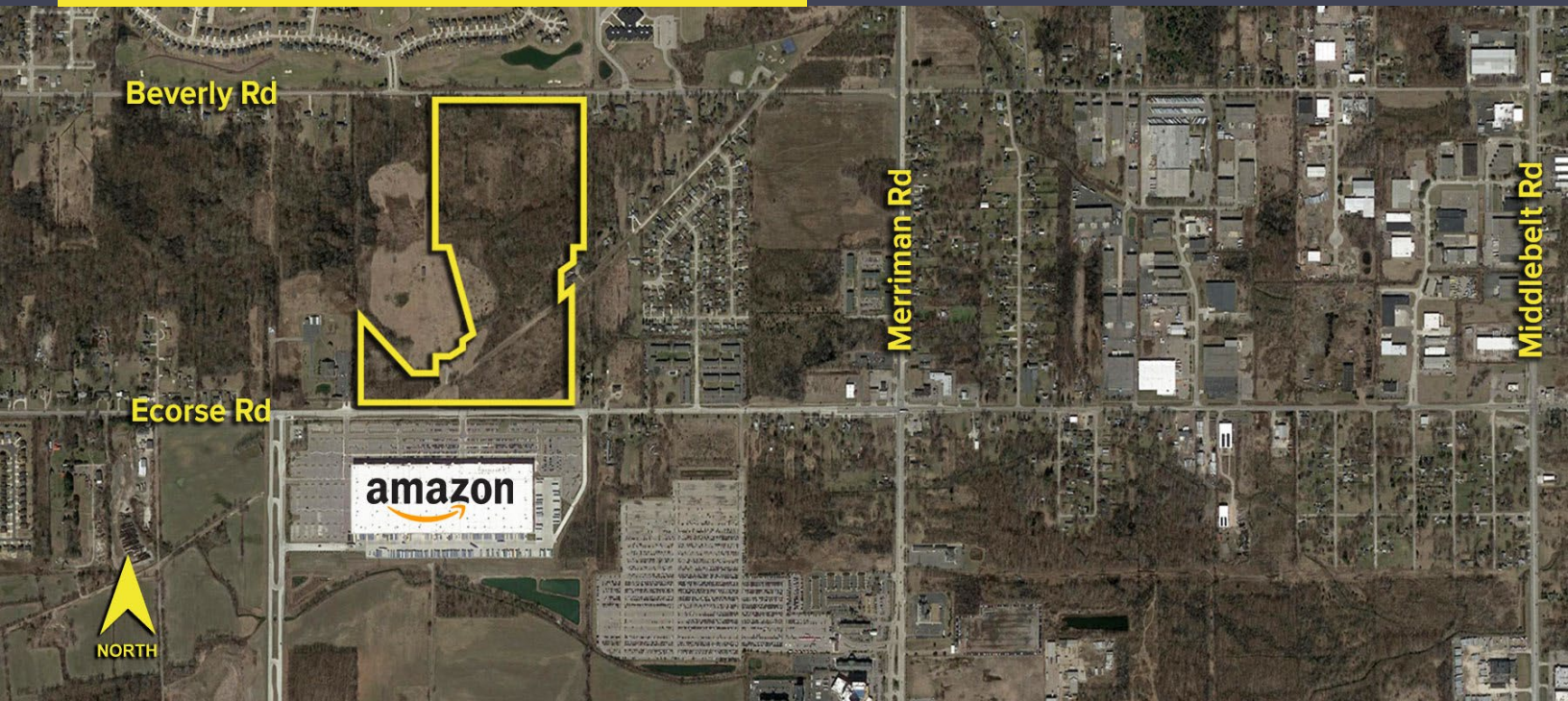


# ECORSE ROAD ROMULUS, MICHIGAN



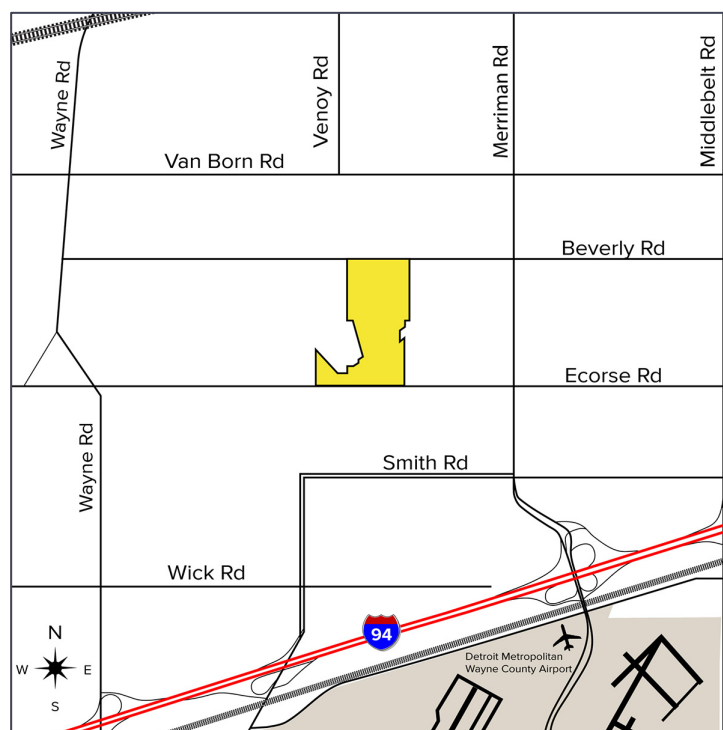
**SIGNATURE  
ASSOCIATES**  
KNOW SIGNATURE | KNOW RESULTS

LAND FOR SALE  
77.17 Acres Available



## PROPERTY FEATURES

- 77.17 acres available – ready for development
- Zoned R1-A, C-2
- Directly across from Amazon Fulfillment Center
- Can be combined with adjacent 30.81 acres for a +/- 100-acre development site
- Wayne County Aerotropolis Incentive Zone
- Sanitary sewer and water onsite
- Quick access to area freeways and just north of Detroit Metropolitan Airport
- Asking price: \$4,000,000.00 (\$51,833.61/acre)



For more information, please contact:

**BRAD VIERGEVER**  
(248) 799 3146  
bviergever@signatureassociates.com

**MARVIN PETROUS**  
(248) 359 0647  
mpetrous@signatureassociates.com

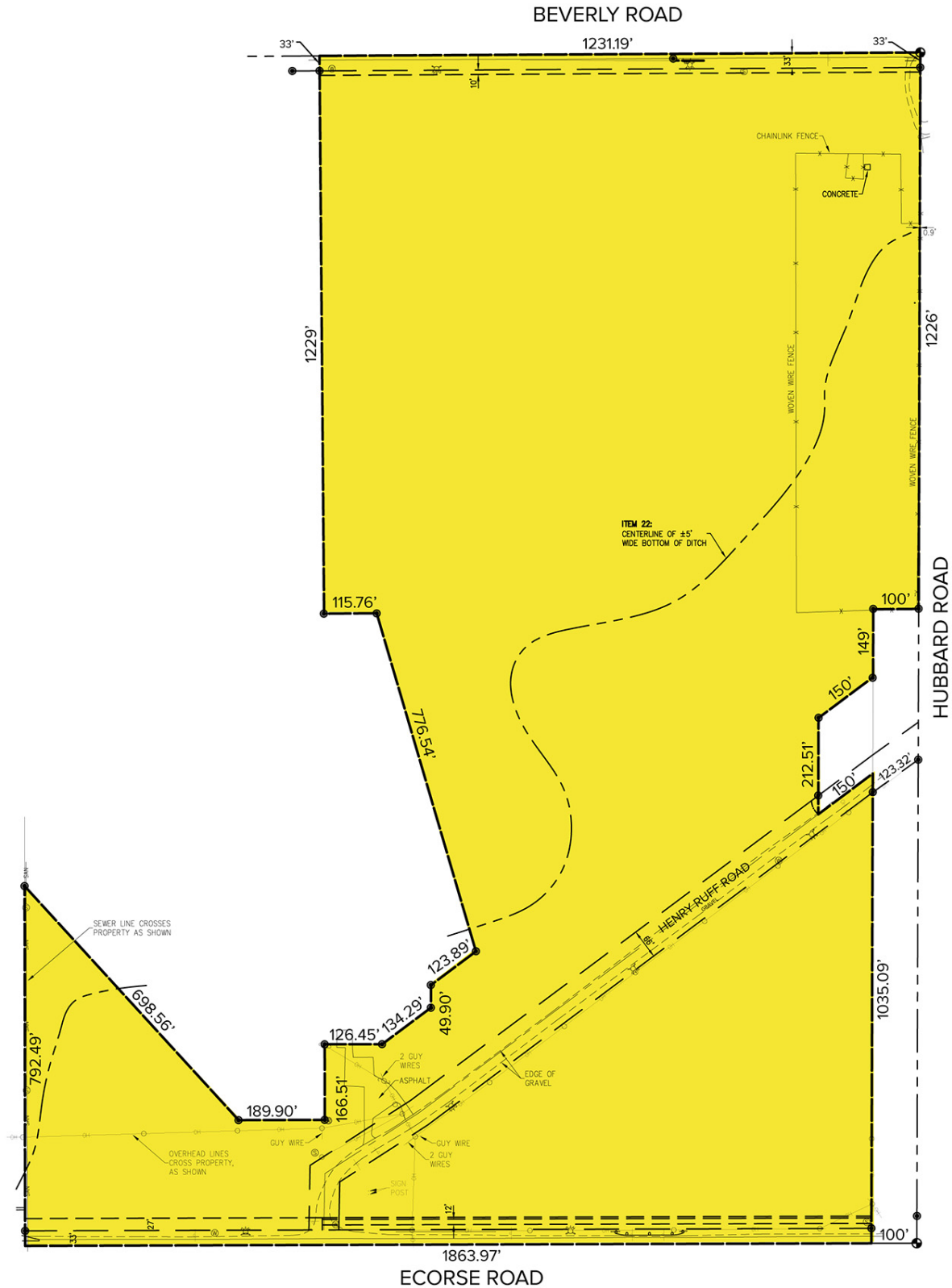
**SIGNATURE ASSOCIATES**  
One Towne Square, Suite 1200  
Southfield, MI 48076  
www.signatureassociates.com

# Ecorse Road – Romulus, Michigan

## Land For Sale

77.17  
Acres  
AVAILABLE

### Site Plan



For more information, please contact:

**BRAD VIERGEVER**  
(248) 799 3146  
bviergever@signatureassociates.com

**MARVIN PETROUS**  
(248) 359 0647  
mpetrous@signatureassociates.com

**SIGNATURE ASSOCIATES**  
One Towne Square, Suite 1200  
Southfield, MI 48076  
www.signatureassociates.com

# Ecorse Road – Romulus, Michigan

## Land For Sale

77.17  
Acres  
AVAILABLE

Aerial



The white outlined, shaded parcel is the 30.81-acre adjacent land site that could be combined for 100-acre development.

For more information, please contact:

**BRAD VIERGEVER**  
(248) 799 3146  
bviergever@signatureassociates.com

**MARVIN PETROUS**  
(248) 359 0647  
mpetrous@signatureassociates.com

**SIGNATURE ASSOCIATES**  
One Towne Square, Suite 1200  
Southfield, MI 48076  
www.signatureassociates.com