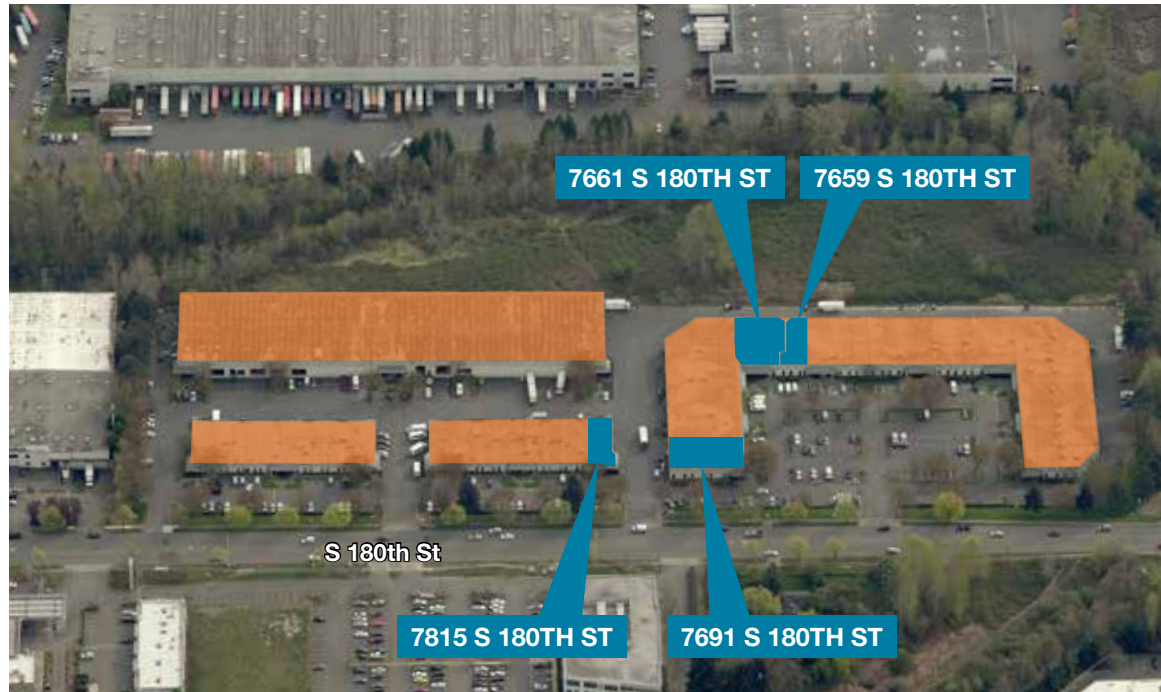


## Springbrook Business Park

7611-7877 S 180th St  
Kent, WA



### Contact

**Thad Mallory, SIOR**  
206.248.7338  
tmallory@kiddermathews.com

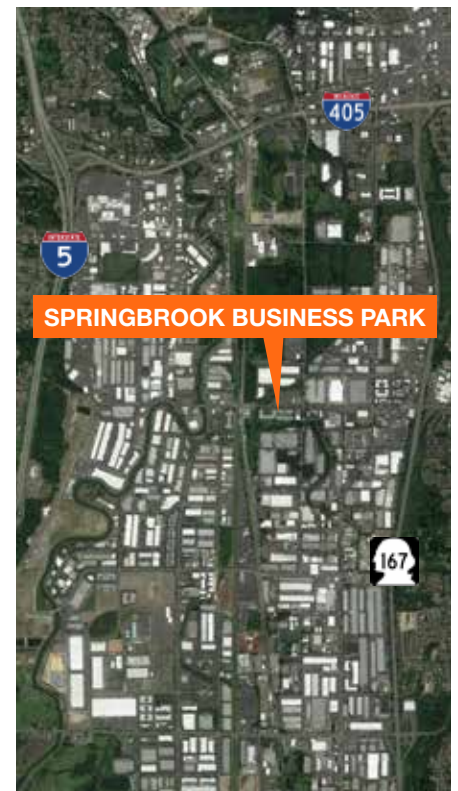
**Tony Miltenberger, SIOR**  
206.248.7307  
tonym@kiddermathews.com

**Cam Warren**  
206.248.6540  
cwarren@kiddermathews.com

### Features

- High image flex park
- Located on the tri-border of Kent, Tukwila and Renton
- Excellent access to the entire region
- Exposure to S 180th Street
- 0.5 miles from IKEA

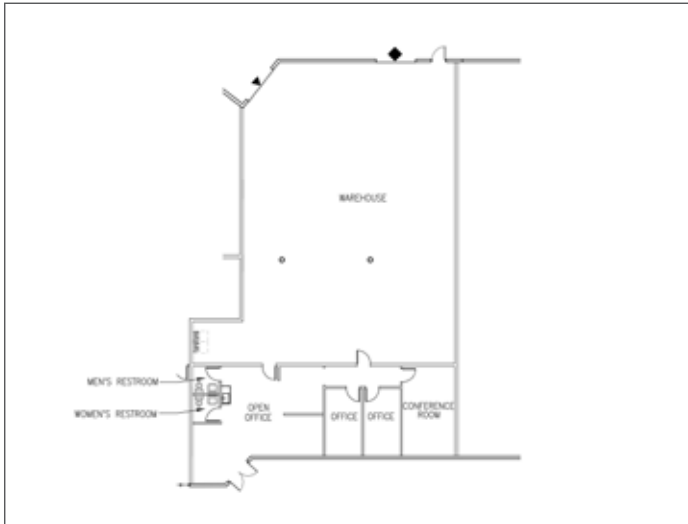
### Location



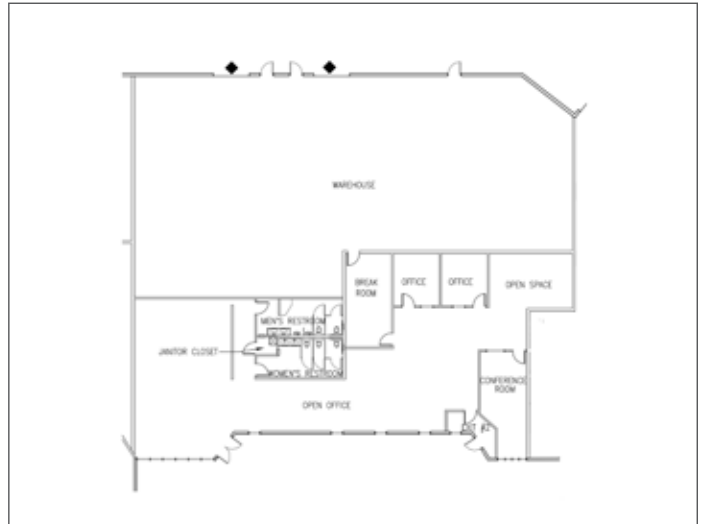
AVAILABLE SPACE			
Suite	SF	Loading	Comments
7659	±4,790 (±1,345)	1 DH 1 GL	Available April 2017
7661	±9,775 (±4,294)	2 GL	Available April 2017
7691	±5,640 (±2,957)	1 GL	Available with 30 days notice
7815	±5,110 (±1,859)	1 GL	Available July 2017

## Site Plan

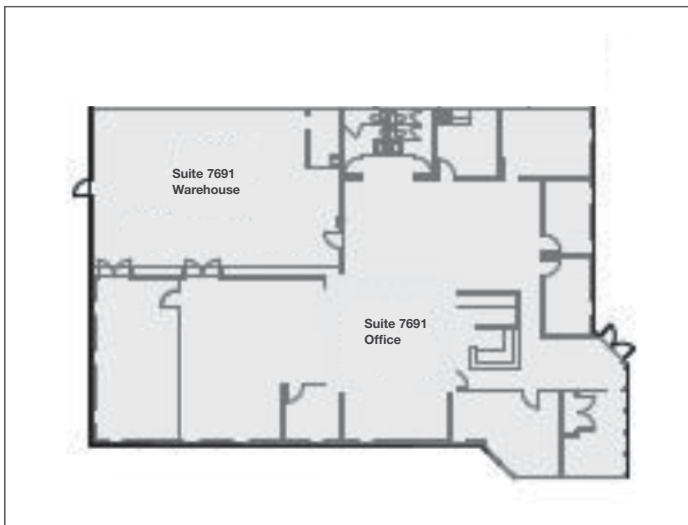
Suite 7659



Suite 7661



Suite 7691



Suite 7815



## Contact

**Thad Mallory, SIOR**  
 206.248.7338  
 tmallory@kiddermathews.com

**Tony Miltenberger, SIOR**  
 206.248.7307  
 tonym@kiddermathews.com

**Cam Warren**  
 206.248.6540  
 cwarren@kiddermathews.com