

Brand New Lakefront Office space



This is a brand new building located in the very popular and well exposed West Interchange area of Ellensburg.

Shell build out is complete and ready for your customized improvements

The building is very energy efficient and is loaded with utilities and amenities, including security cameras and intrusion detection.

4000 s.f. is available on the first floor, with another 2000 s.f. upstairs.

2309 Dolarway Rd Ellensburg, WA 98926

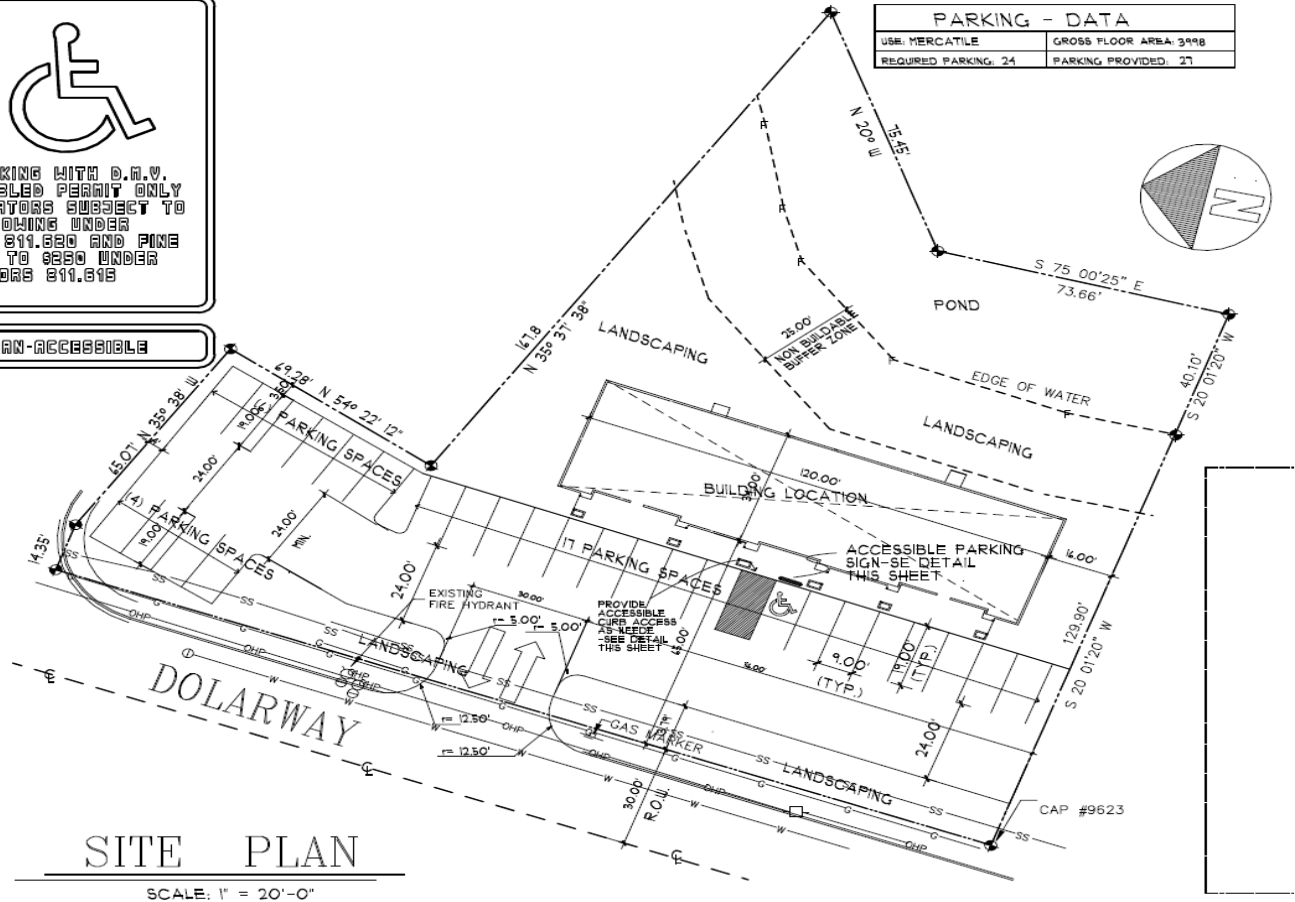
for more information contact:
Brian Shanafelt 206-276-9322

Plenty of parking plus lighted signs will be available on the building and roadside for your business.

PARKING WITH O.A.V.
DISABLED PERMIT ONLY
VIOLATORS SUBJECT TO
TOWING UNDER
ORS 811.520 AND FINE
UP TO \$250 UNDER
ORS 811.815

VAN-ACCESSIBLE

| PARKING - DATA | |
|----------------------|------------------------|
| USE: MERCATILE | GROSS FLOOR AREA: 3498 |
| REQUIRED PARKING: 24 | PARKING PROVIDED: 27 |



SITE PLAN

SCALE: 1" = 20'-0"



Beautiful site right on the lake for spectacular views.

