

# MISSION BAY OFFICE SPACE FOR LEASE

## 3565 DEL REY STREET

SAN DIEGO, CALIFORNIA 92109



**Colliers**  
INTERNATIONAL

**SCOTT DANSHAW**  
+1 858 677 5344  
Lic. No. . 01328481  
scott.danshaw@colliers.com

**JUSTIN HARVEY**  
+1 858 677 5324  
Lic. No. 01262253  
justin.harvey@colliers.com

4350 La Jolla Village Drive  
Suite 500  
San Diego, CA 92122

# FOR LEASE

3565 Del Rey Street, San Diego, CA 92109

## Property Features



- Approx. 11,876 SF Available
- Creative office, exposed ceiling space
  - Building signage available
  - Medical office uses accepted
  - Fiber available to the building



Excellent freeway access and visibility, adjacent to I-5



Parking Ratio: 3.0/1,000



Convenient location near numerous amenities & restaurants.



## BUILDING DATA:

Total Building SF: 18,218 SF  
Year Built: 1984  
Parking: 3.00 / 1,000 SF

SUITE	SIZE (SF)	AVAILABLE	LEASE RATES
Suite 202/203*:	± 4,183 SF	- Available with 30 days notice	\$1.85 / SF, plus utilities
Suite 204*:	± 1,265 SF	- Available Now	\$1.85 / SF, plus utilities
Suite 207:	± 1,300 SF	- Available Now (Build out is walk in ready for Medical User, Acupuncturist, Chiropractor, or Masseuse)	\$1.95 / SF, plus utilities
Suite 300:	± 2,300 SF	- Available with 30 days notice	\$1.85 / SF, plus utilities
Suite 304:	± 820 SF	- Available with 30 days notice	\$1.85 / SF, plus utilities
Suite 306:	± 1,020 SF	- Available with 30 days notice	\$1.85 / SF, plus utilities
Suite 307	± 988 SF	- Available with 30 days notice	\$1.85 / SF, plus utilities

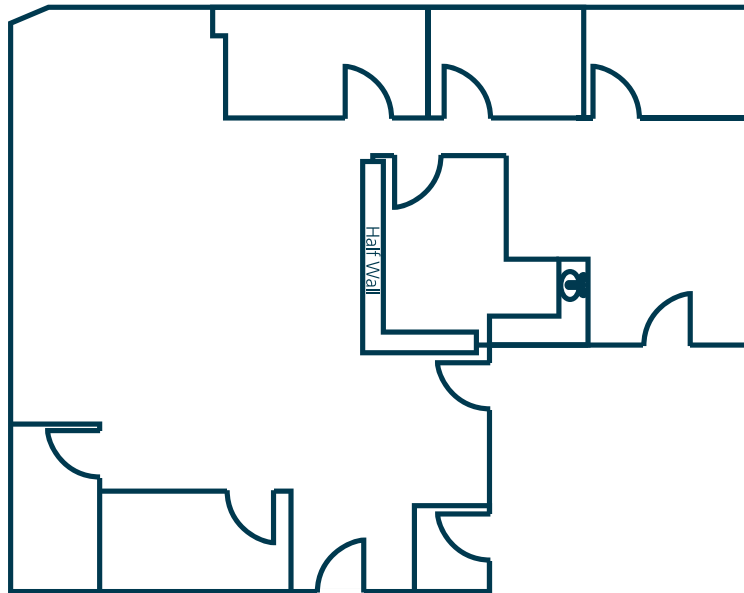
\* Suites 202, 203, and 204 can be combined for a total of ±5,448 SF

# AVAILABILITY

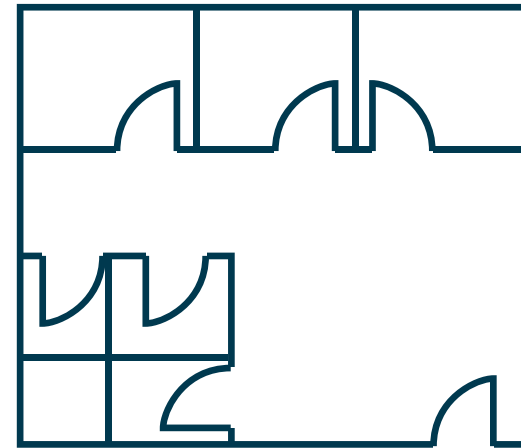
\*SUITE 202/203 | Approximately: 4,183 RSF | Available: 30 Days' Notice

\*SUITE 204 | Approximately: 1,265 RSF | Available: Now

## Suite 202 / 203\* - 4,183 SF



## Suite 204\* - 1,265 SF



\*Suites 202, 203, and 204 can be combined for a total of ±5,448 SF

# AVAILABILITY

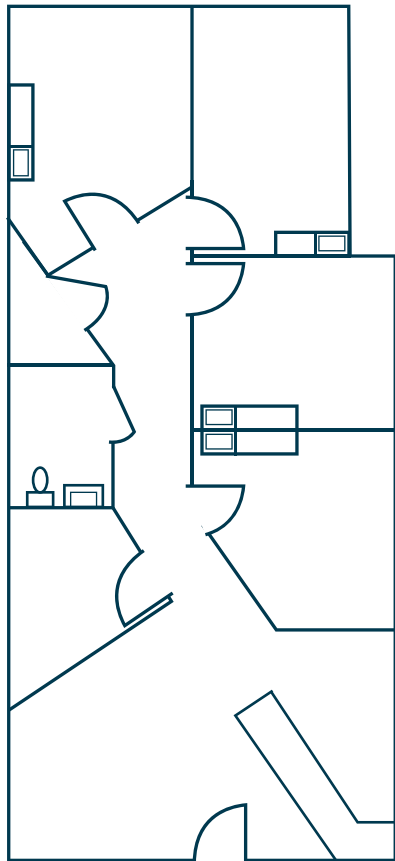
**SUITE 207** | Approximately: 1,300 RSF | Available: Now

(Build out is walk in ready for Medical User, Acupuncturist, Chiropractor, or Masseuse)

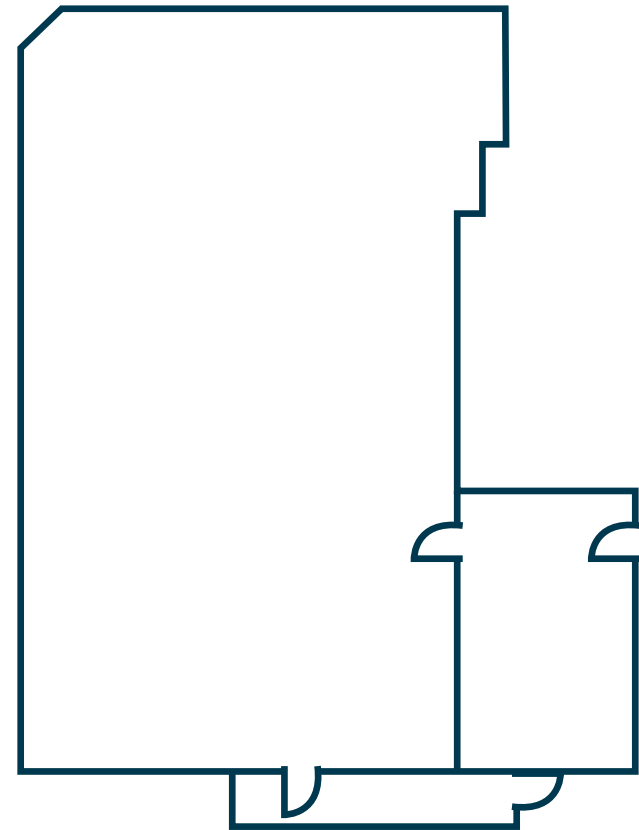
**SUITE 300** | Approximately: 2,300 RSF | Available: with 30 Days' Notice

## Suite 207 - 1,300 SF

(Build out is walk in ready for Medical User, Acupuncturist, Chiropractor, or Masseuse)



## Suite 300 - 2,300 SF



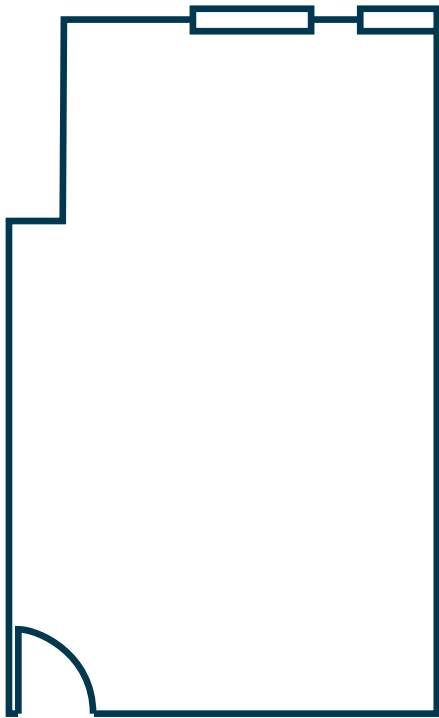
Floorplans not to scale, for reference only.

# AVAILABILITY

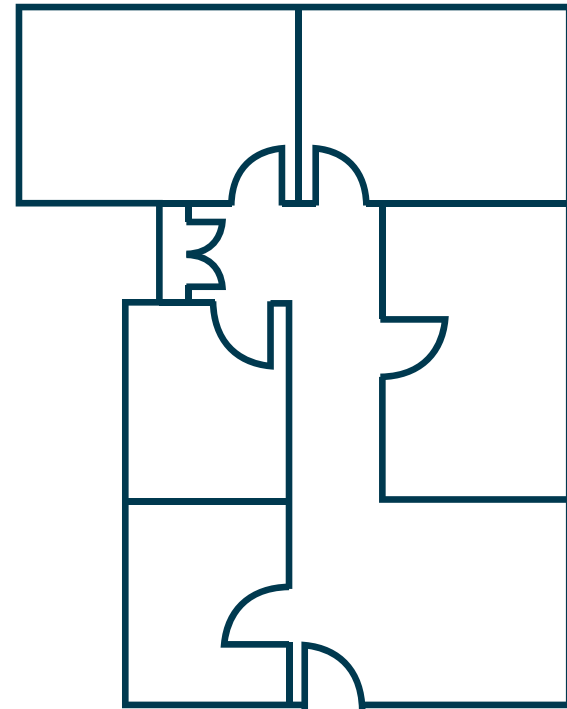
**SUITE 304** | Approximately: 820 RSF | Available: with 30 Days' Notice

**SUITE 306** | Approximately: 1,020 RSF | Available: with 30 Days' Notice

## Suite 304 - 820 SF



## Suite 306 - 1,020 SF

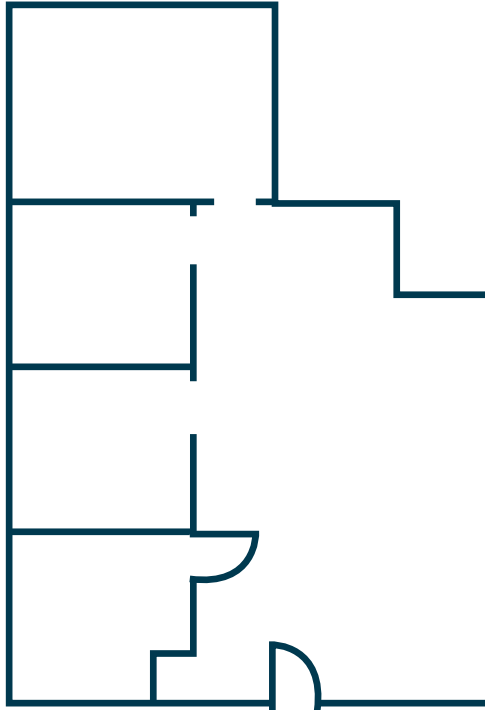


Floorplans not to scale, for reference only.

# AVAILABILITY

SUITE 307 | Approximately: 988 RSF | Available: with 30 Days' Notice

## Suite 307 - 988 SF



Floorplans not to scale, for reference only.



3565 DEL REY ST



**SCOTT DANSHAW**  
+1 858 677 5344  
Lic. No. . 01328481  
scott.danshaw@colliers.com

**JUSTIN HARVEY**  
+1 858 677 5324  
Lic. No. 01262253  
justin.harvey@colliers.com

This document has been prepared by Colliers International for advertising and general information only. Colliers International makes no guarantees, representations or warranties of any kind, expressed or implied, regarding the information including, but not limited to, warranties of content, accuracy and reliability. Any interested party should undertake their own inquiries as to the accuracy of the information. Colliers International excludes unequivocally all inferred or implied terms, conditions and warranties arising out of this document and excludes all liability for loss and damages arising there from. This publication is the copyrighted property of Colliers International and/or its licensor(s). ©2021. All rights reserved.