

INDUSTRIAL LAND WITH RAIL SPUR FOR LEASE



PROPERTY INFORMATION

- Industrial Land Available
- 3.0 Acres Total
- Divisible to: 2.0 Acres
- Rail Spur Available
- Gated Access
- Zoned: M-1
- High Visibility from I-80 and I-215
- Convenient Freeway Access
- Minutes to Salt Lake International Airport

3.0 ACRES: \$13,068.00/MONTH | 2.0 ACRES: \$8,712.00/MONTH

801.617.1700

DANEILE SNELLING
daneile.snelling@crcnationwide.com

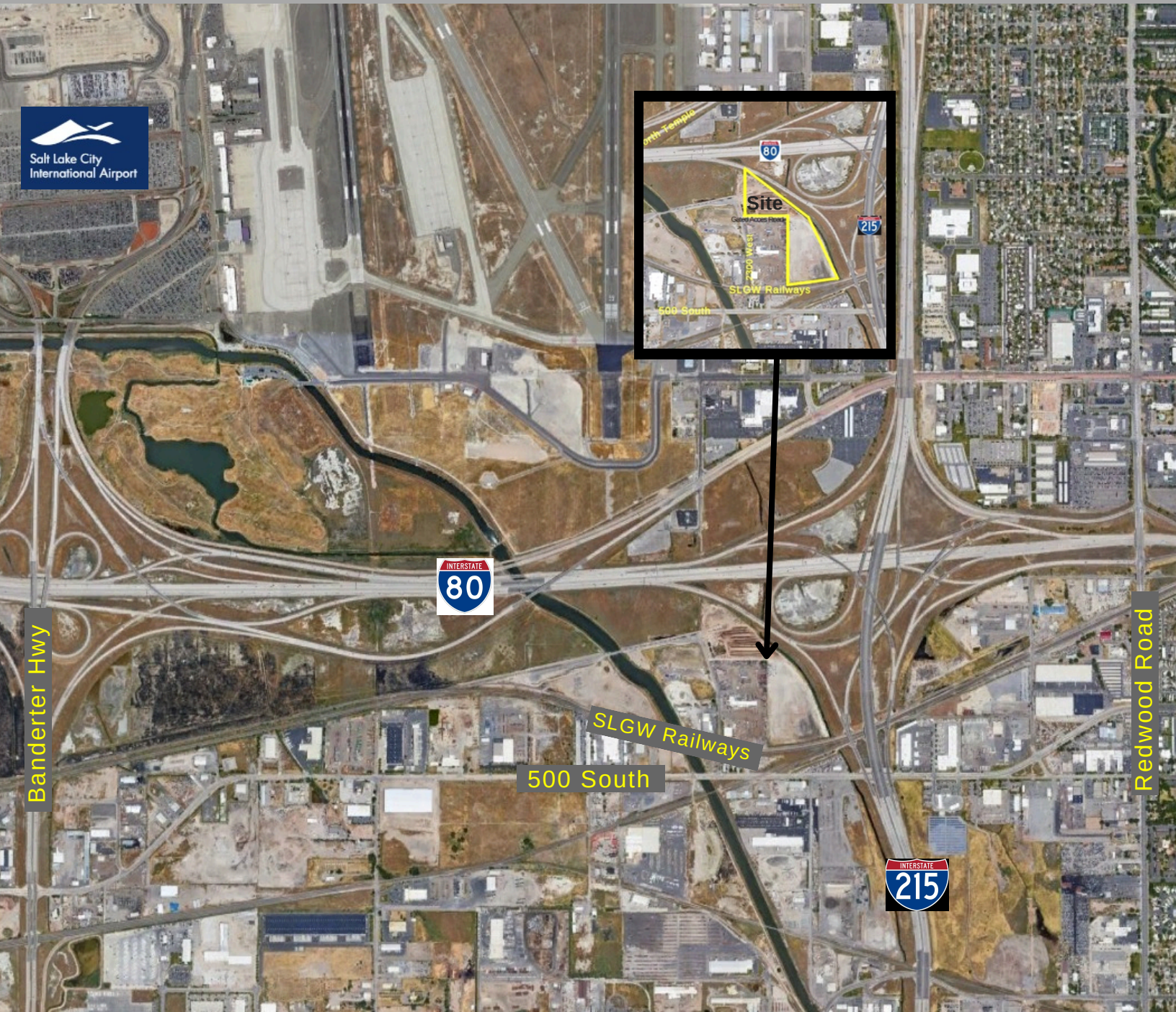
KELLEN KONCAR
kellen.koncar@crcnationwide.com



nationwide

COMMERCIAL REAL ESTATE CONSULTANTS

285 SOUTH 2650 WEST, SALT LAKE CITY 84104



This information is given with the understanding that all negotiations and/or real estate activity related to the property described above shall be conducted through this cRc Nationwide office. The above information while not guaranteed, was obtained from sources we believe to be reliable.

801.617.1700

DANEILE SNELLING
daneile.snelling@crcnationwide.com

KELLEN KONCAR
kellen.koncar@crcnationwide.com