

DEVELOPED BY
NORTHSTAR
REALTY

BETHEL WOODS SHOPS

Marysville, Ohio



HIGHLIGHTS

- New 15,316-square-foot retail and restaurant development located at a signalized intersection
- Anchored by Kroger Marketplace (one of Central Ohio's top producing Krogers)
- Caters to Honda's largest manufacturing facility in Ohio, Scotts Miracle-Gro Corporate Headquarters, Nestle, and Univenture
 - Honda: 4M SF manufacturing facility; 13th largest employer in Ohio
 - Scotts Miracle-Gro Headquarters: 923 employees
 - Univenture: 249 employees
 - Nestle: 230 employees
- Located within 2.5 miles of Rural King, Walmart, Union County Airport, Union County Fairgrounds, Memorial Hospital, and City Gate Medical Center
- Conveniently located one-quarter mile from US 33 with over 33,000 vehicles per day
- Ideal for restaurants, convenience retail, and daily needs

DEMOGRAPHICS

POPULATION	3 MILE	5 MILE	7 MILE
2024 Projection	27,785	33,727	38,323
2019 Estimate	25,977	31,598	35,930
INCOME	3 MILE	5 MILE	7 MILE
2019 Average	\$83,888	\$86,178	\$87,601
2019 Median	\$71,948	\$73,767	\$75,257
DAYTIME POPULATION	3 MILE	5 MILE	7 MILE
2019 Employees	18,499	20,711	21,923

LEASING INFORMATION

CLEVELAND THE OFFICES AT LEGACY VILLAGE
25333 CEDAR ROAD, SUITE 305
CLEVELAND, OH 44124

COLUMBUS CORPORATE HILL II, suite 108
100 W. OLD WILSON BRIDGE ROAD
COLUMBUS, OH 43085

DANIEL CLARK
Vice President, Columbus Office
daniel@goodmanrealestate.com

JESSICA SONDEERS
Sales Associate, Columbus Office
jessica@goodmanrealestate.com

216.381.8200 | www.goodmanrealestate.com

LANDLORD LEASING
Adam Rudolph
(614) 454-5000

THE INFORMATION ABOVE HAS BEEN OBTAINED FROM SOURCES BELIEVED TO BE RELIABLE. GOODMAN REAL ESTATE SERVICES GROUP LLC AND ITS AGENTS, ASSOCIATES, AND EMPLOYEES MAKE NO GUARANTEE, WARRANTY OR REPRESENTATION ABOUT IT. ALL IMAGES CONTAINED HEREIN ARE THE PROPERTY OF GOODMAN REAL ESTATE SERVICES GROUP LLC AND SHALL NOT BE DUPLICATED OR REPRODUCED WITHOUT EXPRESS WRITTEN CONSENT OF GOODMAN REAL ESTATE SERVICES GROUP LLC. YOU ACKNOWLEDGE THAT, AS REQUIRED BY THE STATE OF OHIO, YOU HAVE RECEIVED THE CONSUMER GUIDE TO AGENCY RELATIONSHIPS.



LEASING INFORMATION

www.goodmanrealestate.com
216.381.8200

DANIEL CLARK

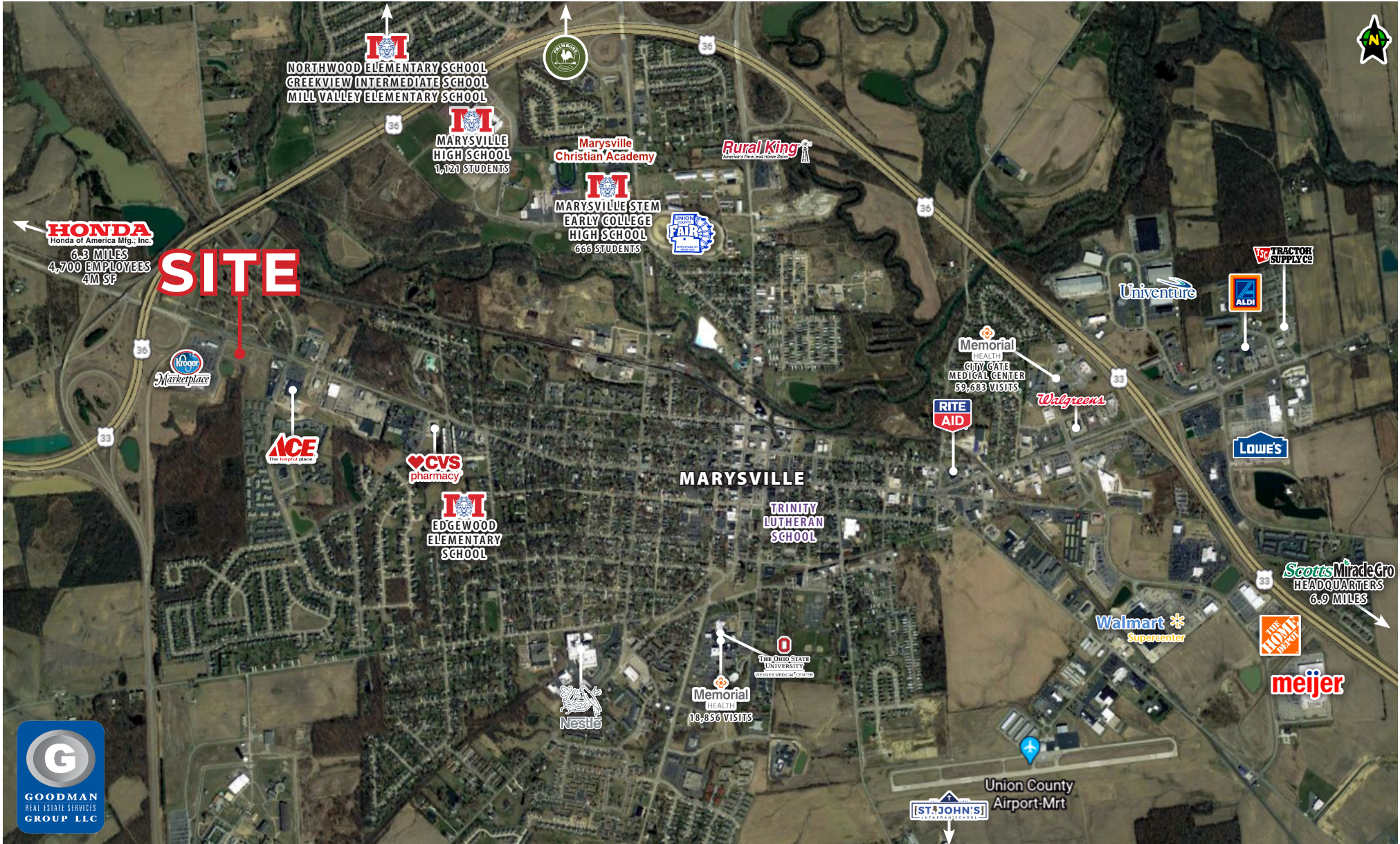
Vice President, Columbus Office
daniel@goodmanrealestate.com

JESSICA SONDRERS

Sales Associate, Columbus Office
jessica@goodmanrealestate.com

BETHEL WOODS SHOPS

Marysville, Ohio





BETHEL WOODS SHOPS

MARYSVILLE, OHIO

LEASING INFORMATION

P 216.381.8200
F 216.381.8211

WWW.GOODMANREALESTATE.COM

DANIEL CLARK

daniel@goodmanrealestate.com

JESSICA SONDRERS

jessica@goodmanrealestate.com

CLEVELAND

THE OFFICES OF LEGACY VILLAGE
25333 CEDAR ROAD, SUITE 305
CLEVELAND, OH 44124

COLUMBUS

CORPORATE HILL II, SUITE 108
100 W. OLD WILSON BRIDGE ROAD
COLUMBUS, OH 43085



W 5TH STREET

11,399 VPD (19)

