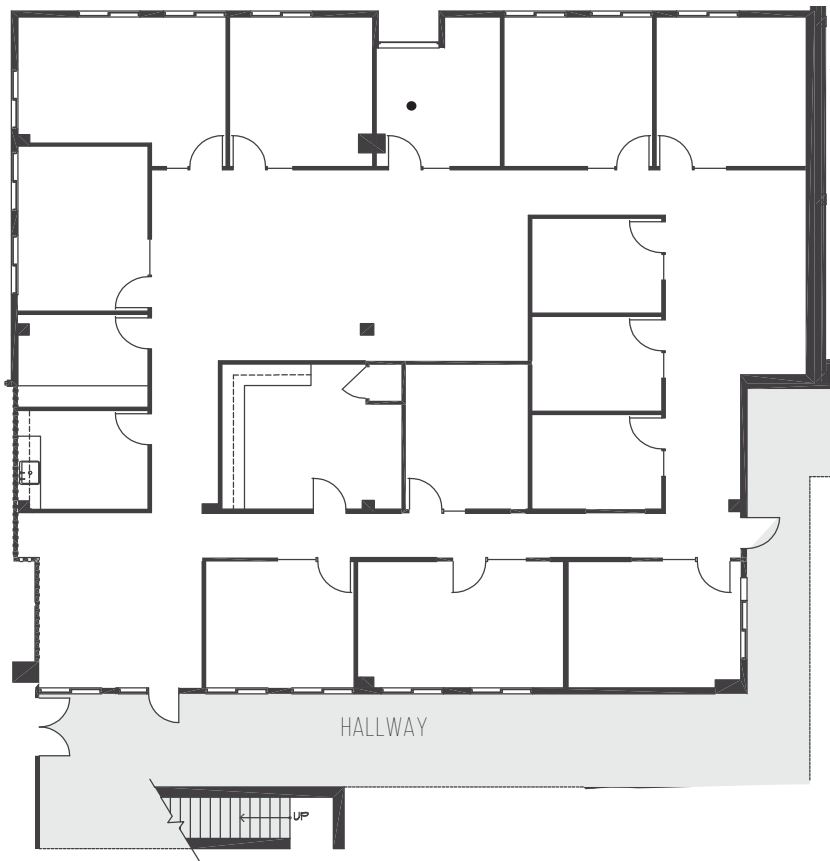
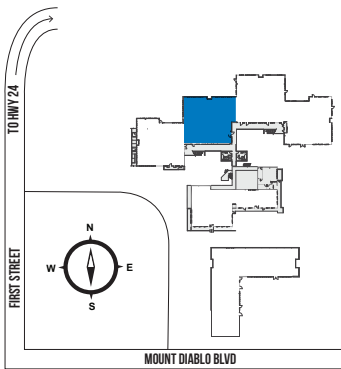


FLOOR PLANS

BLDG A - 3470 MOUNT DIABLO BLVD

SUITE 110 | ±6,487 SF



KNUTE BUCKLEW 925.974.0240 KBUCKLEW@NGKF.COM CA RE LICENSE #01332731

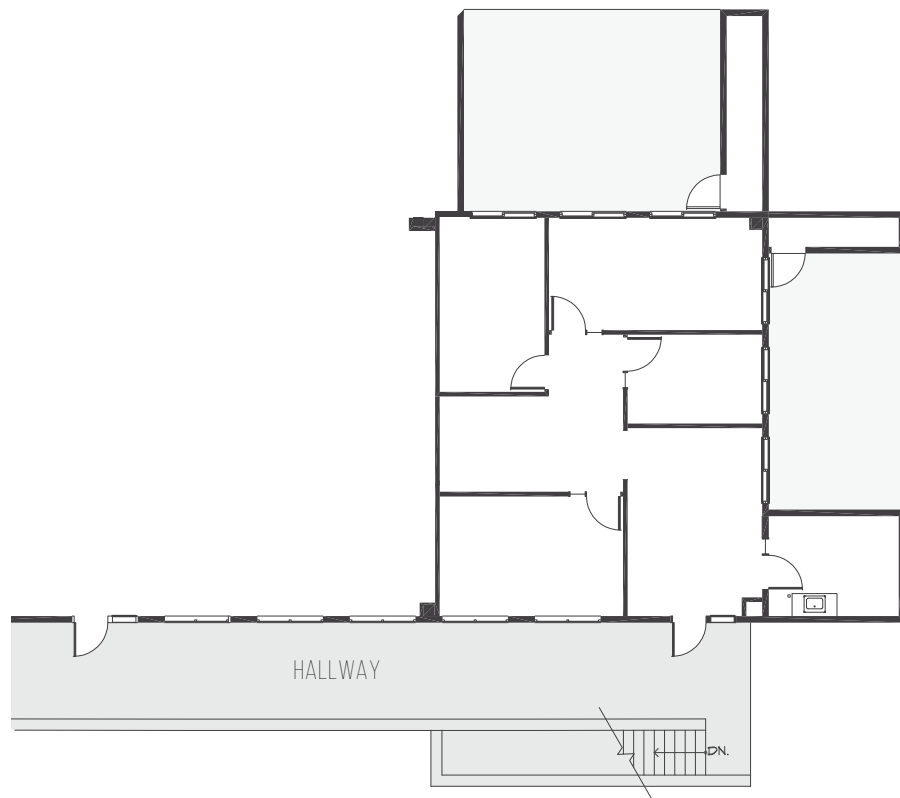
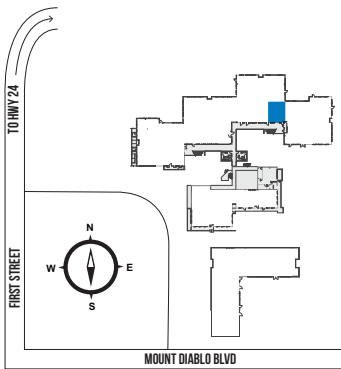
DANNY BARTZ 925.974.0231 DBARTZ@NGKF.COM CA RE LICENSE 01971819

THE DISTRIBUTOR OF THIS COMMUNICATION IS PERFORMING ACTS FOR WHICH A REAL ESTATE LICENSE IS REQUIRED. THE INFORMATION CONTAINED HEREIN HAS BEEN OBTAINED FROM SOURCES DEEMED RELIABLE BUT HAS NOT BEEN VERIFIED AND NO GUARANTEE, WARRANTY OR REPRESENTATION, EITHER EXPRESS OR IMPLIED, IS MADE WITH RESPECT TO SUCH INFORMATION. TERMS OF SALE OR LEASE AND AVAILABILITY ARE SUBJECT TO CHANGE OR WITHDRAWAL WITHOUT NOTICE. 18.1378 / 10.18

FLOOR PLANS

BLDG A - 3470 MOUNT DIABLO BLVD

SUITE 310 | ±1,398 SF



KNUTE BUCKLEW 925.974.0240 KBUCKLEW@NGKF.COM CA RE LICENSE #01332731

DANNY BARTZ 925.974.0231 DBARTZ@NGKF.COM CA RE LICENSE 01971819

THE DISTRIBUTOR OF THIS COMMUNICATION IS PERFORMING ACTS FOR WHICH A REAL ESTATE LICENSE IS REQUIRED. THE INFORMATION CONTAINED HEREIN HAS BEEN OBTAINED FROM SOURCES DEEMED RELIABLE BUT HAS NOT BEEN VERIFIED AND NO GUARANTEE, WARRANTY OR REPRESENTATION, EITHER EXPRESS OR IMPLIED, IS MADE WITH RESPECT TO SUCH INFORMATION. TERMS OF SALE OR LEASE AND AVAILABILITY ARE SUBJECT TO CHANGE OR WITHDRAWAL WITHOUT NOTICE. 18.1378 / 10.18