

EXCEPTIONAL OFFICE SPACE WILTON, CONNECTICUT



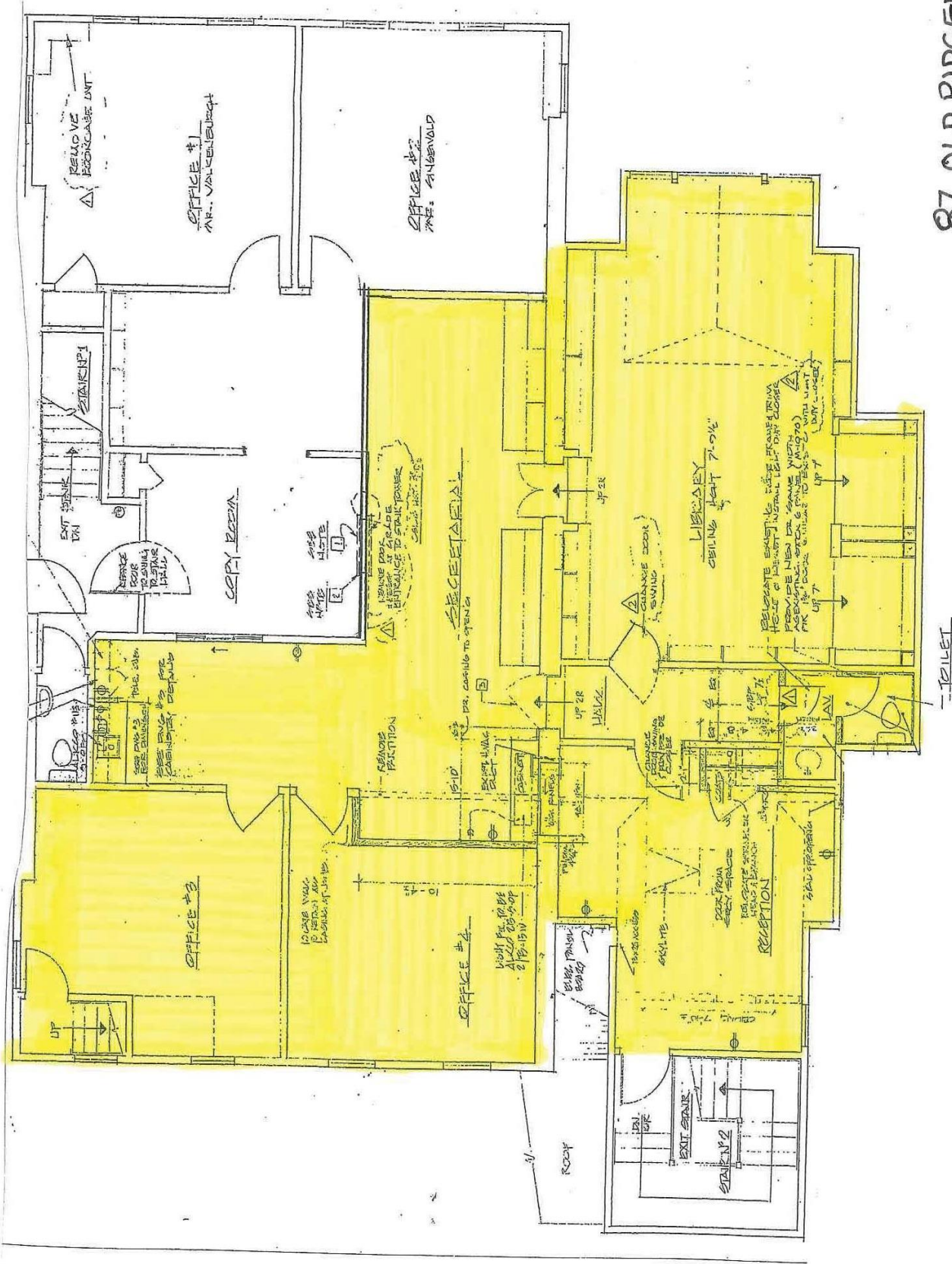
87 OLD RIDGEFIELD ROAD

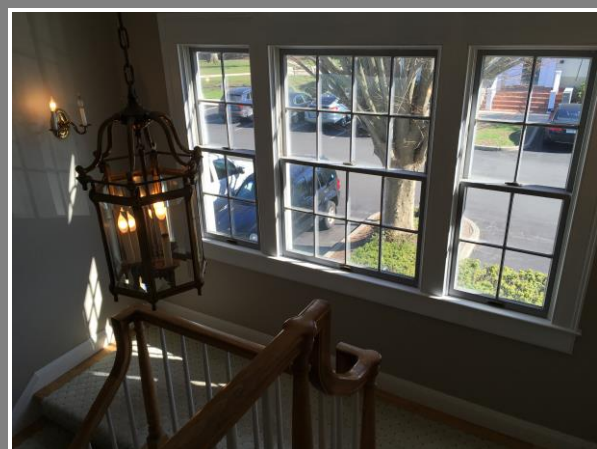
- *1,850 SF, 2nd floor*
- *A Wilton Center location with “downtown” convenience*
- *Walk to shops, restaurants, banks, post office, and the railroad station*
- *Conveniently located near Route 7*
- *\$25/SF Gross + Electric*
- *Ample parking*
- *Immediate occupancy*

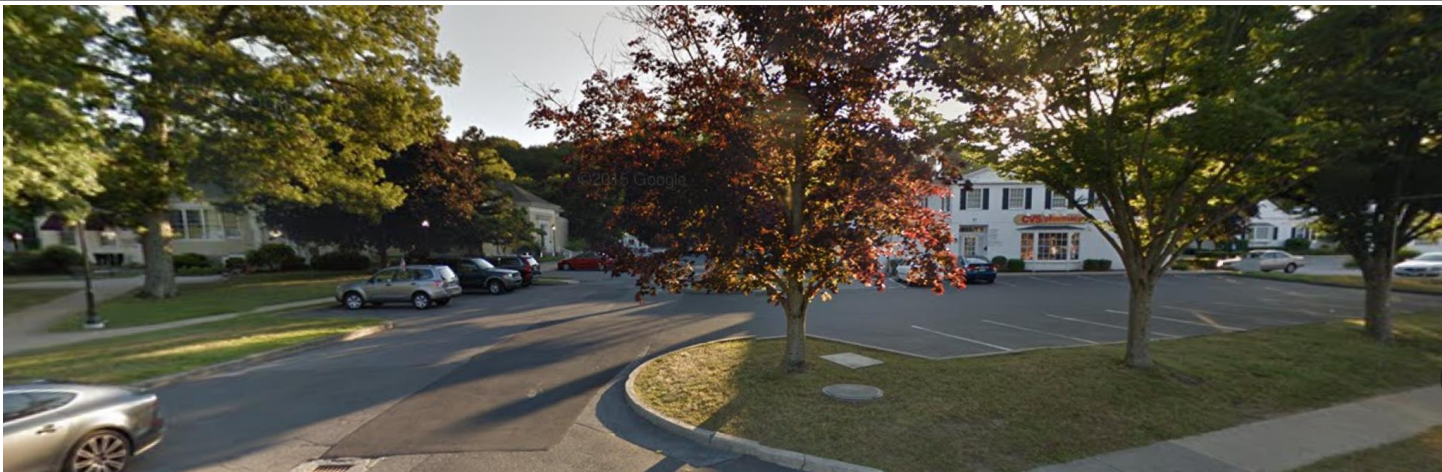
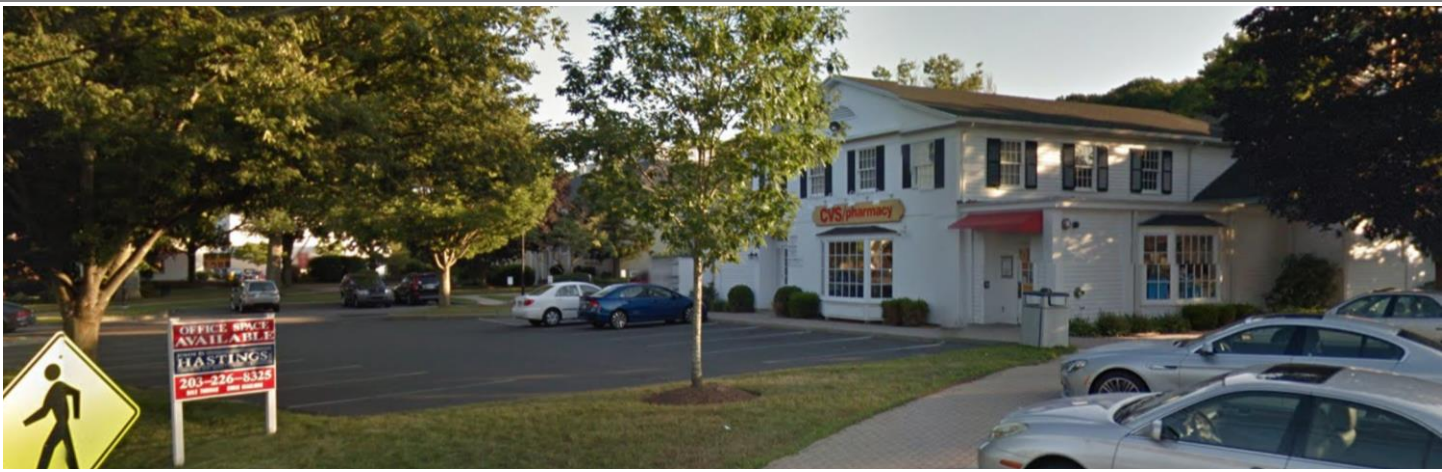
Contact Exclusive Agents
Dale Thomas or Christopher Maglione
(203) 226-8325

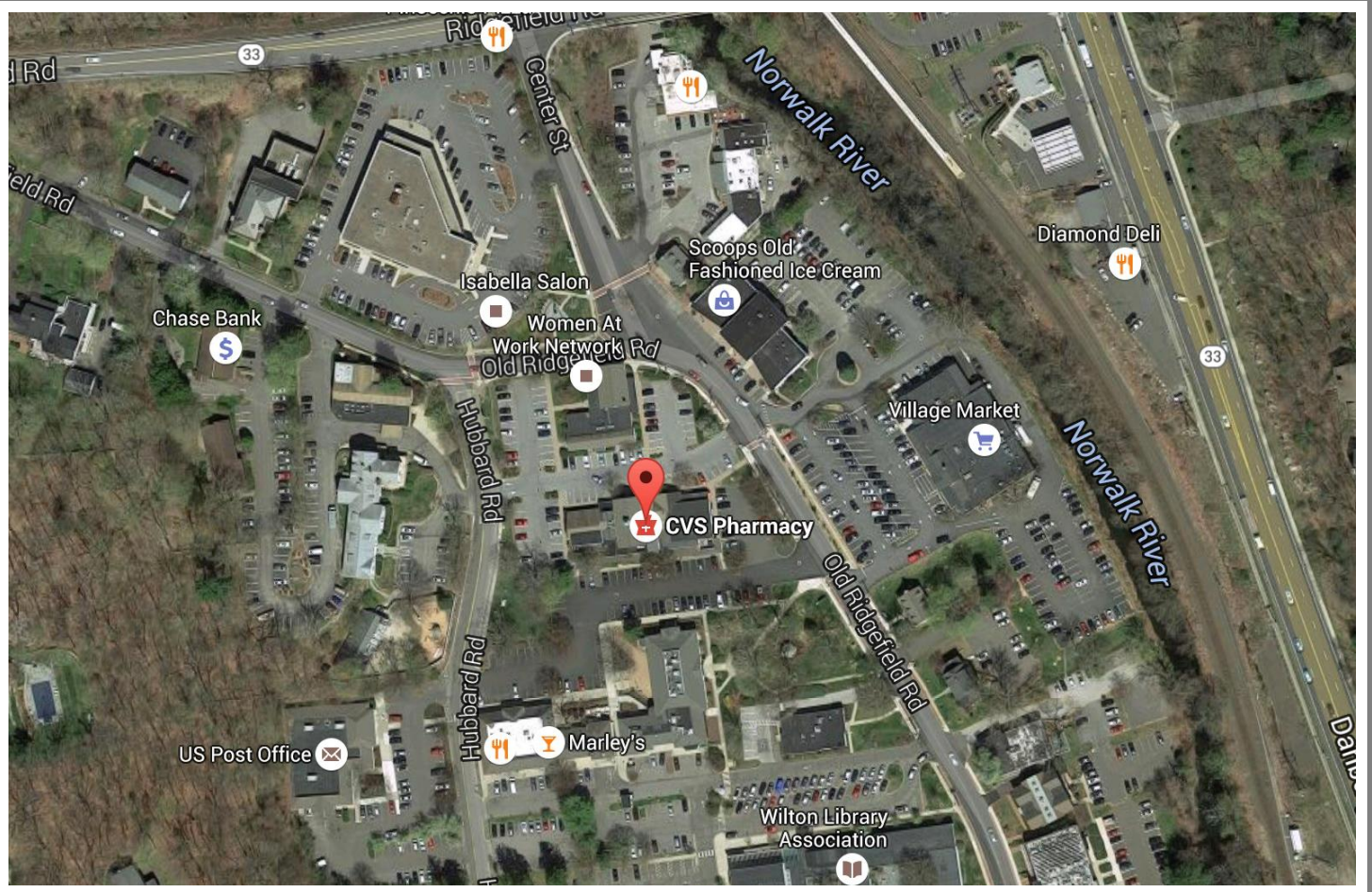
dthomas@johndhastings.com or Christopher_maglione@yahoo.com

87 OLD RIDGEFIELD ROAD
(1850 s f)

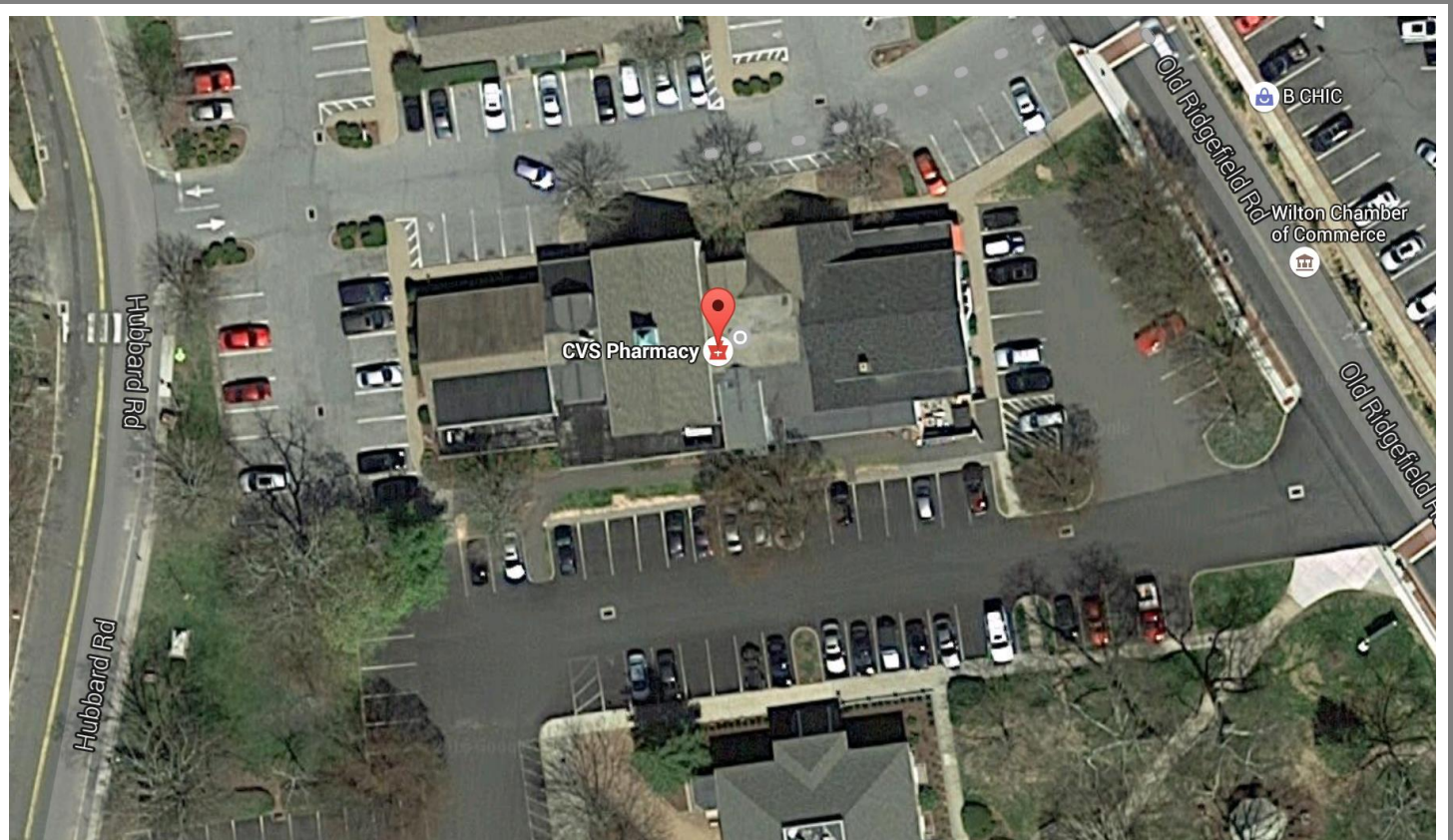








Aerial View Northern Wilton Center



Aerial View 87 Old Ridgefield Rd (CVS Shopping Center)