



27 HARBOR VIEW AVENUE | STAMFORD, CT

DEMOGRAPHICS

POPULATION

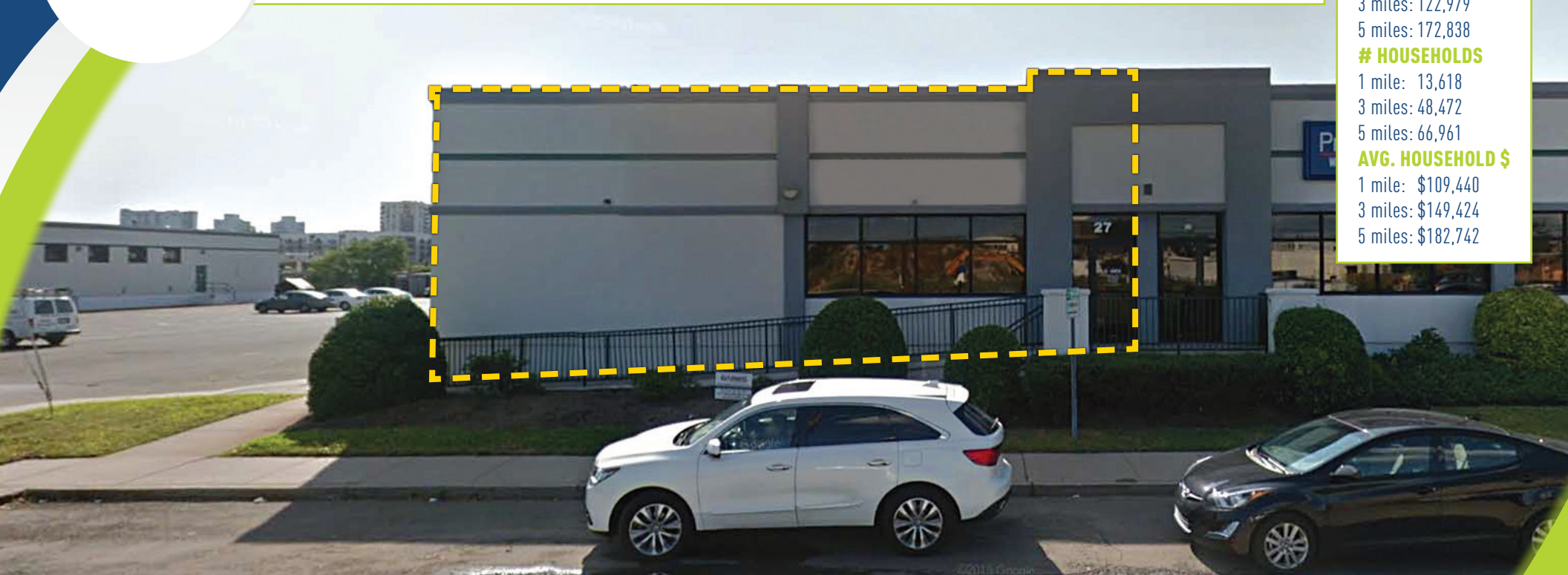
1 mile: 34,826
3 miles: 122,979
5 miles: 172,838

HOUSEHOLDS

1 mile: 13,618
3 miles: 48,472
5 miles: 66,961

AVG. HOUSEHOLD \$

1 mile: \$109,440
3 miles: \$149,424
5 miles: \$182,742



LEASING: 5,000 SF

MG-Heavy Industrial Zone available - Allows for many uses including: warehouse, distribution, manufacturing, furniture / antiques and fitness.

- Easy access from I-95 and Route 1
- Ample parking
- Ability to add a loading dock
- 14.5' ceiling height

AREA TENANTS: Lillian August, Ford, Miller Motors, GMC, Hyundai, ShopRite, Sprint, Goodwill, Wells Fargo, West Marine, Bank of America and more.

**A TRUE EXCLUSIVE...
CALL FOR THE DETAILS!**

AGENTS:

Greg Romano

203.667.1277 | gr@truecre.com

This information provided in this marketing package has been obtained from sources believed reliable, but has not been verified for accuracy or completeness. You should conduct a careful, independent investigation of the property and verify all information. Any reliance on this information is solely at your own risk.



27 HARBOR VIEW AVENUE | STAMFORD, CT



SITE

- Apple
- macy's
- UNI QLO
- H&M
- BARNES & NOBLE
- FOREVER 21
- Cheesecake Factory
- b PLAN B
- KONA GRILL
- THE CAPITAL

- Sprint
- CRAZY GRAPES STAMFORD
- CHelsea PIERS CONNECTICUT
- goodwill
- WELLS FARGO

- SHIPPAN CORNER VARIETY
- CAFE SILVIUM
- STAMFORD MARTIAL ARTS



- FAIRWAY
- The Shop

- TOMATO TOMATO
- West Marine

- UNITED STATES POSTAL SERVICE
- People's United Bank

- LILLIAN AUGUST
- planet fitness



- SUBWAY
- Bank of America

