

USER  
BUILDING  
FOR  
SALE

# 1280 PARKER ROAD

DENVER COLORADO :: 80231

**PRICE REDUCED!!!**



**PRICE:** ~~\$1,225,400~~ **\$1,125,400** (\$82.65/SF)

**BUILT:** 1985

**SIZE:** 13,616 SF

**PARCEL NUMBER:** 1973-21-2-09-007

**TAXES:** \$25,000 (Est.)

**ZONING:** B1

## FEATURES

- :: On Bus Route
- :: Minutes to Cherry Creek
- :: Minutes to Nine Mile Light Rail
- :: Easy to find location at Parker & Mississippi
- :: Balconies off second floor
- :: Full basement

**FOR MORE  
INFORMATION  
PLEASE  
CONTACT**

**Dave Buck**  
Vice President  
720.528.6514  
dave.buck@cbre.com

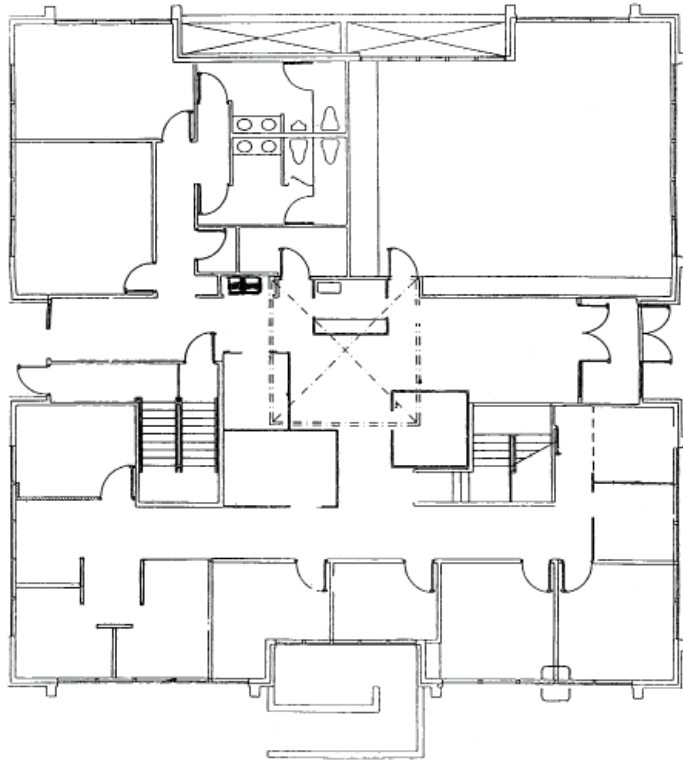
**CBRE**

USER  
BUILDING  
FOR  
SALE

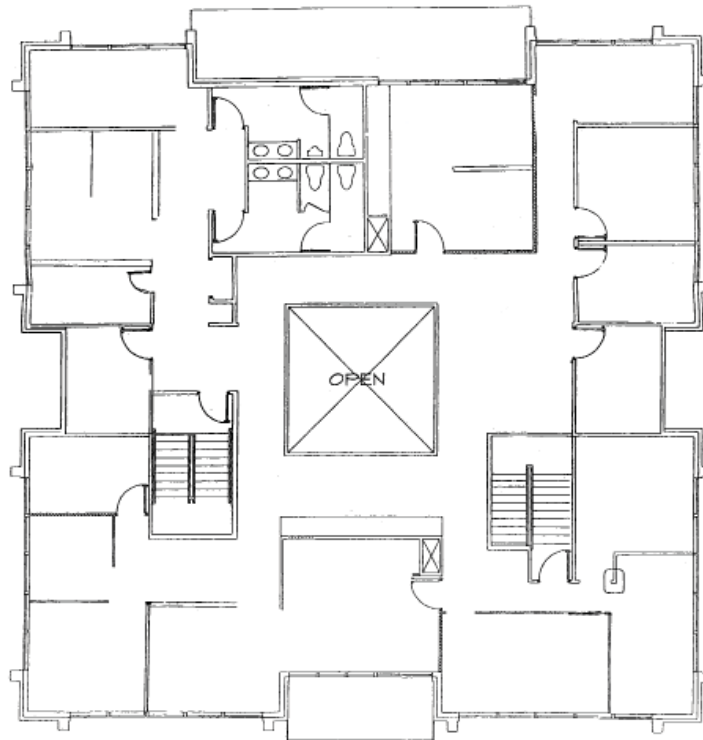
# 1280 PARKER ROAD

DENVER COLORADO :: 80231

## FIRST FLOOR



## SECOND FLOOR



FOR MORE  
INFORMATION  
PLEASE  
CONTACT

**Dave Buck**

Vice President

720.528.6514

dave.buck@cbre.com