

# Mosley Square

11252-11272 Olive Boulevard

St. Louis, MO 63141

## 720 SF PRIME RETAIL SPACE AVAILABLE FOR LEASE IN CREVE COEUR



- **720 SF Retail Available**
- 11266 Olive Blvd
- Located at the signalized intersection of Olive Blvd and Mosley Road
- Prominent building signage available
- 9:1,000 parking ratio
- Traffic volume on Olive Blvd: 30,905 vehicles per day
- **LEASE RATE: \$1,500.00 PER MO. + NNN**

### ABOUT CREVE COEUR

- Provides the third largest office population in St. Louis
- Contains over 5 million square feet of commercial space
- Home to Bayer's North American world headquarters, the NIDUS Center for Scientific Enterprise, the Donald Dansforth Plant Science Center, Thomson Reuters, Missouri Baptist Medical Center, Mercy Hospital St. Louis, Barnes-Jewish West County Hospital and eight of the 25 largest IT consulting firms in St. Louis

### DEMOGRAPHICS

	1 MILE	3 MILE
Population:	8,691	62,007
Daytime Employment:	15,309	105,348
No. of Households:	3,944	27,277
Avg. HH Income:	\$122,126	\$106,216

## HUTKIN DEVELOPMENT COMPANY

10829 Olive Boulevard  
Suite 200  
St. Louis, MO 63141

Telephone 314.872.9140  
FAX 314.872.9001

Visit our website:  
[www.hutkin.com](http://www.hutkin.com)

### CONTACT

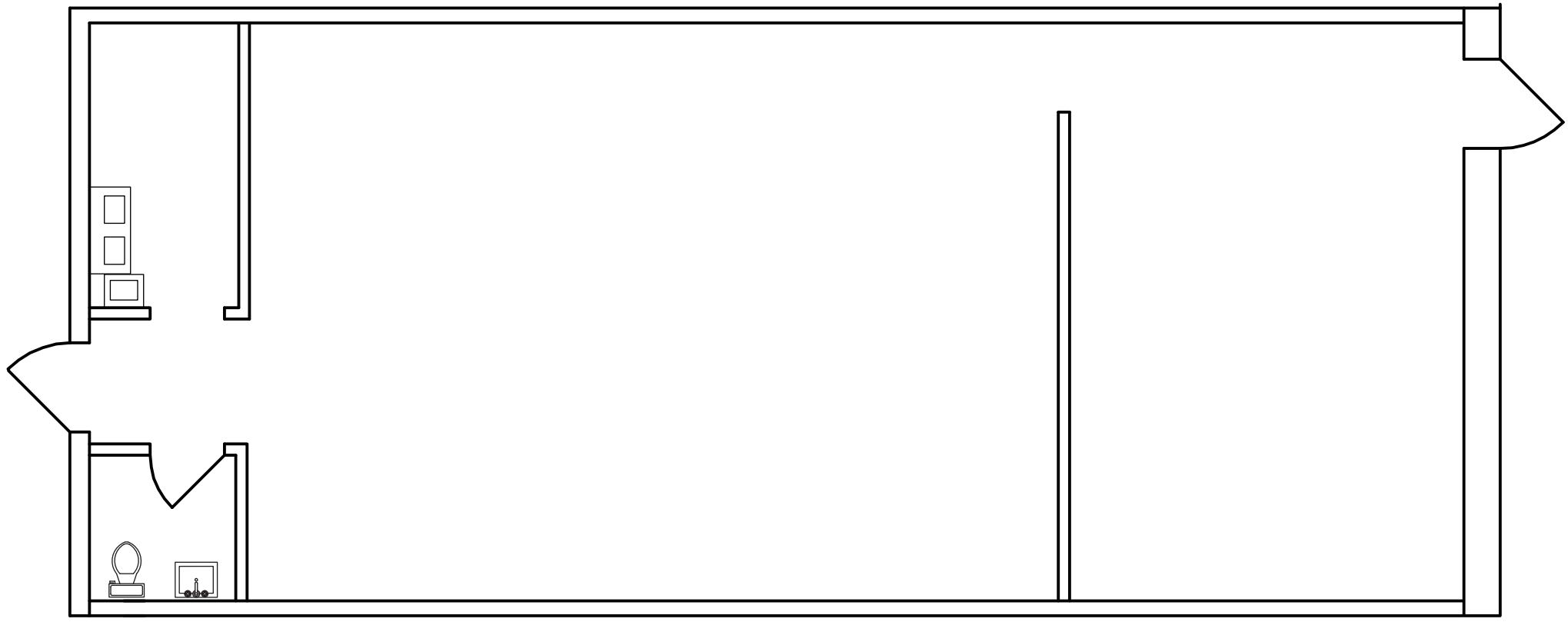
Tony Giarratano  
[tony@hutkin.com](mailto:tony@hutkin.com)  
Direct 314.708.4922  
Cell 314.276.2352

Bo Keefer  
[bkeefer@hutkin.com](mailto:bkeefer@hutkin.com)  
Direct 314.708.1258  
Cell 314.973.1242

# Mosley Square

11252-11272 Olive Boulevard  
St. Louis, MO 63141

**720 SF PRIME RETAIL SPACE  
AVAILABLE FOR LEASE IN CREVE COEUR**



11266 OLIVE BLVD  
720 SF



# Mosley Square

11252-11272 Olive Boulevard  
 St. Louis, MO 63141

## 720 SF PRIME RETAIL SPACE AVAILABLE FOR LEASE IN CREVE COEUR



ADDRESS	STATUS	SIZE (SF)
11252 Olive Blvd	Occupied	1,108
11256 Olive Blvd	Occupied	958
11258 Olive Blvd	Occupied	1,231
11260-64 Olive Blvd	Occupied	1,678
<b>11266 Olive Blvd</b>	<b>AVAILABLE</b>	<b>720</b>
11268-72 Olive Blvd	Occupied	1,920

