



# Galleria Vera Cruz

1001 San Marcos Blvd.  
San Marcos, CA 92078

## Second Floor ~~\$0.99~~ Gross

1st Yr. - \$0.75 MG, 2nd Yr. - \$0.90 MG, 3rd Yr. - \$1.00 MG

Suite 210 1,163 SF

- ◆ Current Tenants in the center include iTan, Inland Tavern, The Towne Jeweler, Ivy League Barber Academy, The Acne Spot, Kumon Tutoring Center, and others.
  - ◆ Less than 1 mile from Highway 78.
- ◆ Across the street from Restaurant Row, close proximity to Edwards San Marcos Movie Stadium, Fry's Electronics, and other major retailers.
- ◆ High Traffic, Major San Marcos Corridor.



38,365  
Cars Per Day  
San Marcos Blvd  
@ Via Vera Cruz

This information is compiled from data which we believe to be correct but no liability is assumed by this company as to accuracy of such data. V39

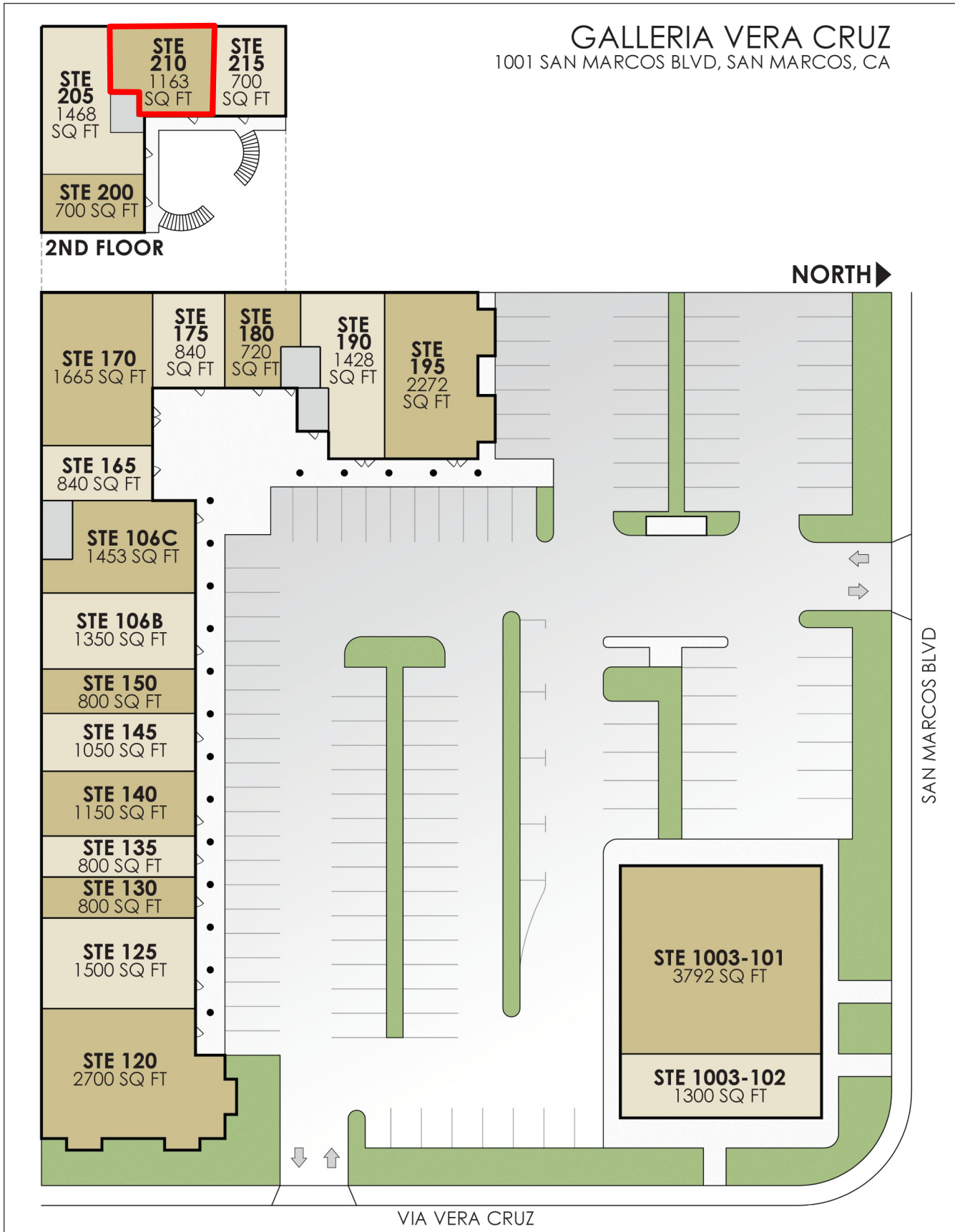
Nick Zech #01721457  
858.232.2100  
nzech@cdccommercial.com

Matt Orth #01857155  
858.736.1337  
morth@cdccommercial.com



# Site Plan

GALLERIA VERA CRUZ  
1001 SAN MARCOS BLVD, SAN MARCOS, CA



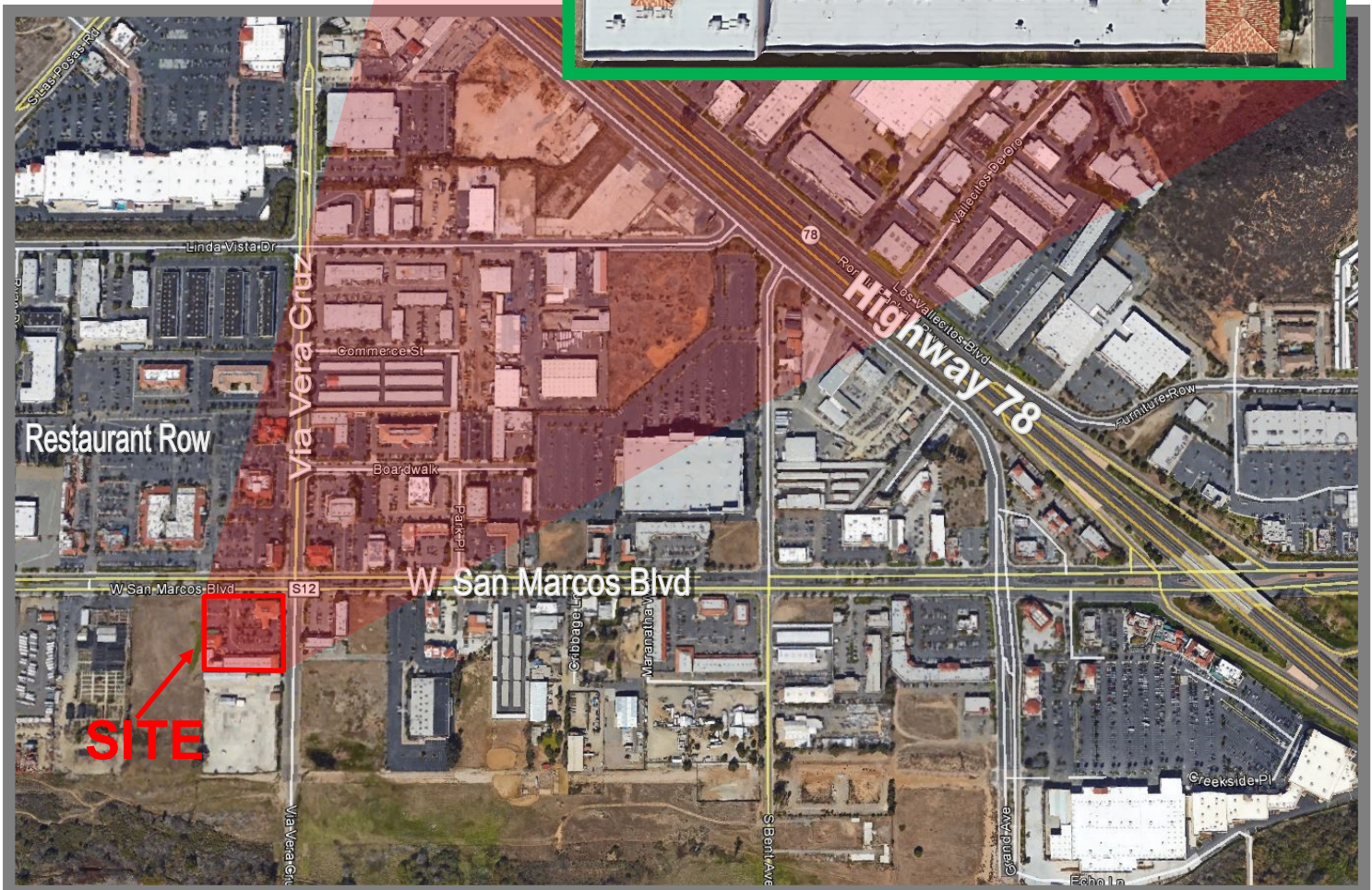
This information is compiled from data which we believe to be correct but no liability is assumed by this company as to accuracy of such data. V39

Nick Zech #01721457  
858.232.2100  
nzech@cdccommercial.com

Matt Orth #01857155  
858.736.1337  
morth@cdccommercial.com

**CDC**  
COMMERCIAL, Inc.  
www.cdccommercial.com

# Aerial



This information is compiled from data which we believe to be correct but no liability is assumed by this company as to accuracy of such data. V39

Nick Zech #01721457  
858.232.2100  
nzech@cdccommercial.com

Matt Orth #01857155  
858.736.1337  
morth@cdccommercial.com



# Demographics

Radius	1 Mile	3 Mile	5 Mile
<b>Population</b>			
2021 Projection	9,956	100,642	211,893
2016 Estimate	9,353	94,425	199,495
2010 Census	8,304	83,098	179,290
Growth 2016 - 2021	6.45%	6.58%	6.21%
Growth 2010 - 2016	12.63%	13.63%	11.27%
<b>2016 Population by Hispanic Origin</b>	3,398	35,599	60,432
<b>2016 Population</b>	9,353	94,425	199,495
White	7,901 84.48%	77,027 81.57%	165,256 82.84%
Black	229 2.45%	2,789 2.95%	5,479 2.75%
Am. Indian & Alaskan	105 1.12%	1,232 1.30%	2,308 1.16%
Asian	750 8.02%	9,022 9.55%	17,424 8.73%
Hawaiian & Pacific Island	26 0.28%	452 0.48%	812 0.41%
Other	342 3.66%	3,903 4.13%	8,217 4.12%
U.S. Armed Forces	67	653	1,424
<b>Households</b>			
2021 Projection	3,911	33,848	74,935
2016 Estimate	3,671	31,698	70,460
2010 Census	3,252	27,656	63,034
Growth 2016 - 2021	6.54%	6.78%	6.35%
Growth 2010 - 2016	12.88%	14.62%	11.78%
Owner Occupied	2,034 55.41%	19,774 62.38%	46,401 65.85%
Renter Occupied	1,637 44.59%	11,924 37.62%	24,060 34.15%
<b>2016 Households by HH Income</b>	3,673	31,695	70,461
Income: <\$25,000	1,041 28.34%	6,744 21.28%	13,602 19.30%
Income: \$25,000 - \$50,000	836 22.76%	7,274 22.95%	14,225 20.19%
Income: \$50,000 - \$75,000	706 19.22%	5,322 16.79%	10,986 15.59%
Income: \$75,000 - \$100,000	411 11.19%	3,834 12.10%	9,355 13.28%
Income: \$100,000 - \$125,000	190 5.17%	3,014 9.51%	6,756 9.59%
Income: \$125,000 - \$150,000	122 3.32%	1,614 5.09%	4,535 6.44%
Income: \$150,000 - \$200,000	260 7.08%	2,071 6.53%	5,153 7.31%
Income: \$200,000+	107 2.91%	1,822 5.75%	5,849 8.30%
<b>2016 Avg Household Income</b>	\$65,759	\$79,018	\$89,196
<b>2016 Med Household Income</b>	\$48,339	\$57,424	\$66,031

This information is compiled from data which we believe to be correct but no liability is assumed by this company as to accuracy of such data. V39

Nick Zech #01721457  
858.232.2100  
nzech@cdccommercial.com

Matt Orth #01857155  
858.736.1337  
morth@cdccommercial.com

