

FOR LEASE | ±800 - 1,200 SF OFFICE SPACE

11170 Sun Center Dr, Rancho Cordova, CA 95670



**Ross Relles III**

Dir: 916.677.8143

ross.relles@tricommercial.com

CalDRE #01975497

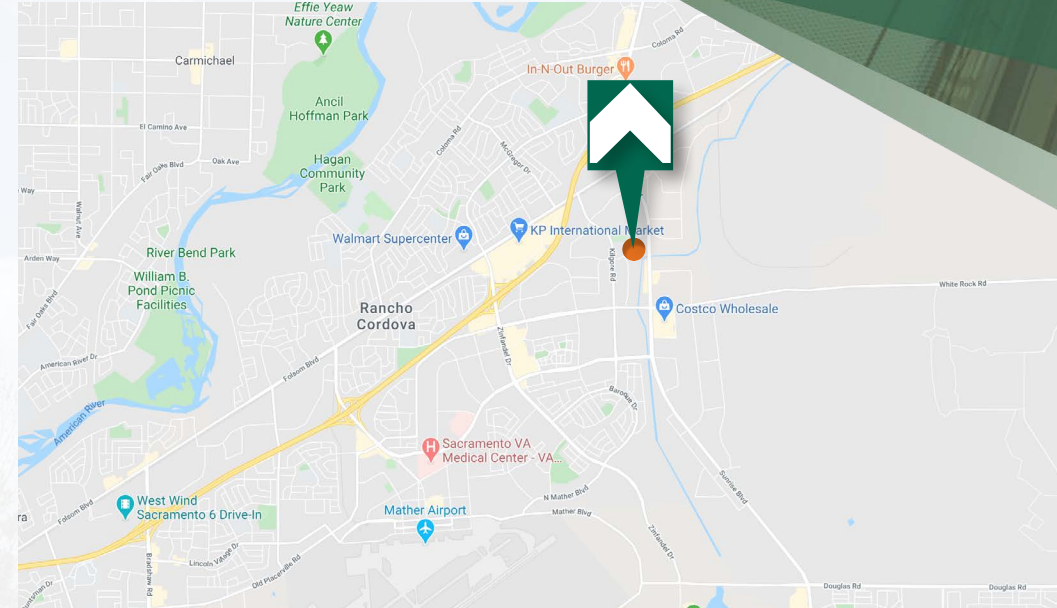
TRI Commercial Real Estate Services 1515 River Park Drive, Suite 200, Sacramento, CA 95815



# FOR LEASE OFFICE SPACE

# PROPERTY SUMMARY

11170 Sun Center Dr  
Rancho Cordova, CA



## PROPERTY HIGHLIGHTS

- **Available Suite 100 - ±800 SF Total with:**
  - Open Office Area
  - One (1) File Room
  - One (1) Large Office
  - Small Coffee Bar
- **Available Suite 300 - ±1,000 SF Total with:**
  - Reception Area
  - Two (2) Offices
  - Conference Room
  - Open Office Area
- **Available Suite 400 - ±1,200 SF Total with:**
  - Reception Area with Seating
  - Two (2) Smaller Private Offices
  - Large Open Office Area
  - One (1) Large Private Office
  - One (1) Conference Room
- Business Park Setting
- Approximately 1 Mile to Highway 50
- Many Close Ammenities

## LEASE SUMMARY

**LEASE RATE:** \$1.25/SF

**LEASE TYPE:** Gross

**AVAILABLE SF:** ±800 - 1,200 SF

**ZONING:** MP

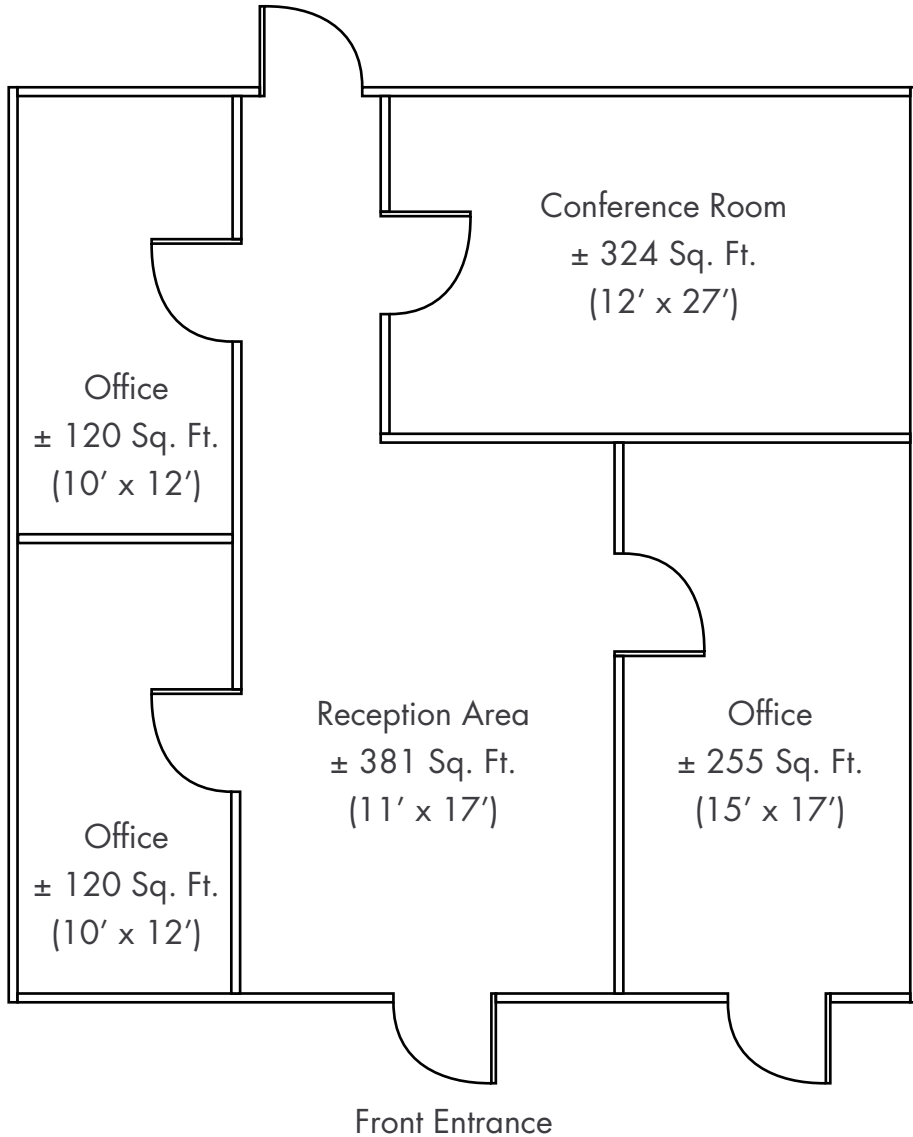
# FOR LEASE OFFICE SPACE

## FLOOR PLANS / PHOTOS

11170 Sun Center Dr  
Rancho Cordova, CA

**SUITE 400 - ±1,200 SF TOTAL**

\*Floor Plans Not to Scale



# FOR LEASE OFFICE SPACE

# AMENITIES MAP

11170 Sun Center Dr  
Rancho Cordova, CA

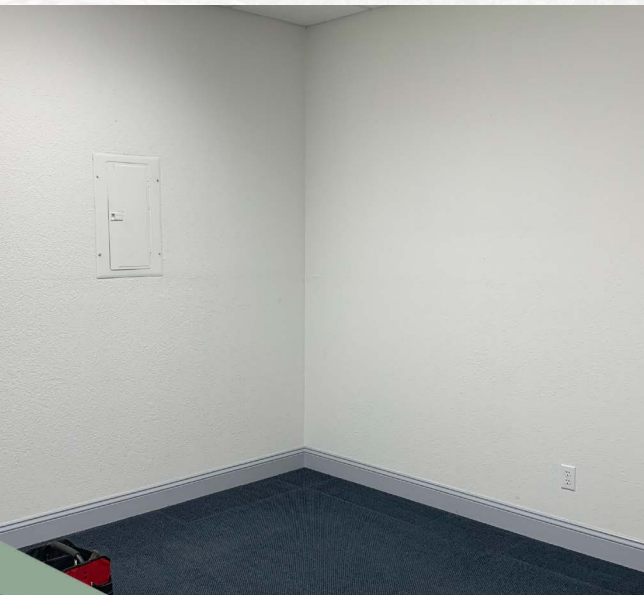


The information in this document was obtained from sources we deem reliable; however, no warranty or representation, expressed or implied, is made as to the accuracy of the information contained herein.

# FOR LEASE OFFICE SPACE

# ADDITIONAL PHOTOS

11170 Sun Center Dr  
Rancho Cordova, CA



The information in this document was obtained from sources we deem reliable; however, no warranty or representation, expressed or implied, is made as to the accuracy of the information contained herein.