

I-2 Land For Sale

1.3 Acres MOL

PRICE REDUCED!

Sales Price: \$395,000

(\$6.98/SF)



3224 S.W. 59th Street

Oklahoma City, Oklahoma 73119

PROPERTY HIGHLIGHTS

- 1.3 Acres MOL, Zoned I-2
- I-44 Visibility
- Great Location for Convenience Store, Retail Shops, Professional Office or Industrial Buildings
- Next to New Waffle House



www.naisullivangroup.com

NO WARRANTY OR REPRESENTATION, EXPRESS OR IMPLIED, IS MADE AS TO THE ACCURACY OF THE INFORMATION CONTAINED HEREIN, AND THE SAME IS SUBMITTED SUBJECT TO ERRORS, OMISSIONS, CHANGE OF PRICE, RENTAL OR OTHER CONDITIONS, PRIOR SALE, LEASE OR FINANCING, OR WITHDRAWAL WITHOUT NOTICE, AND OF ANY SPECIAL LISTING CONDITIONS IMPOSED BY OUR PRINCIPALS NO WARRANTIES OR REPRESENTATIONS ARE MADE AS TO THE CONDITION OF THE PROPERTY OR ANY HAZARDS CONTAINED THEREIN ARE ANY TO BE IMPLIED.

Darryl Meason

Cell: 1 405 205 9440

darryl@naisullivangroup.com

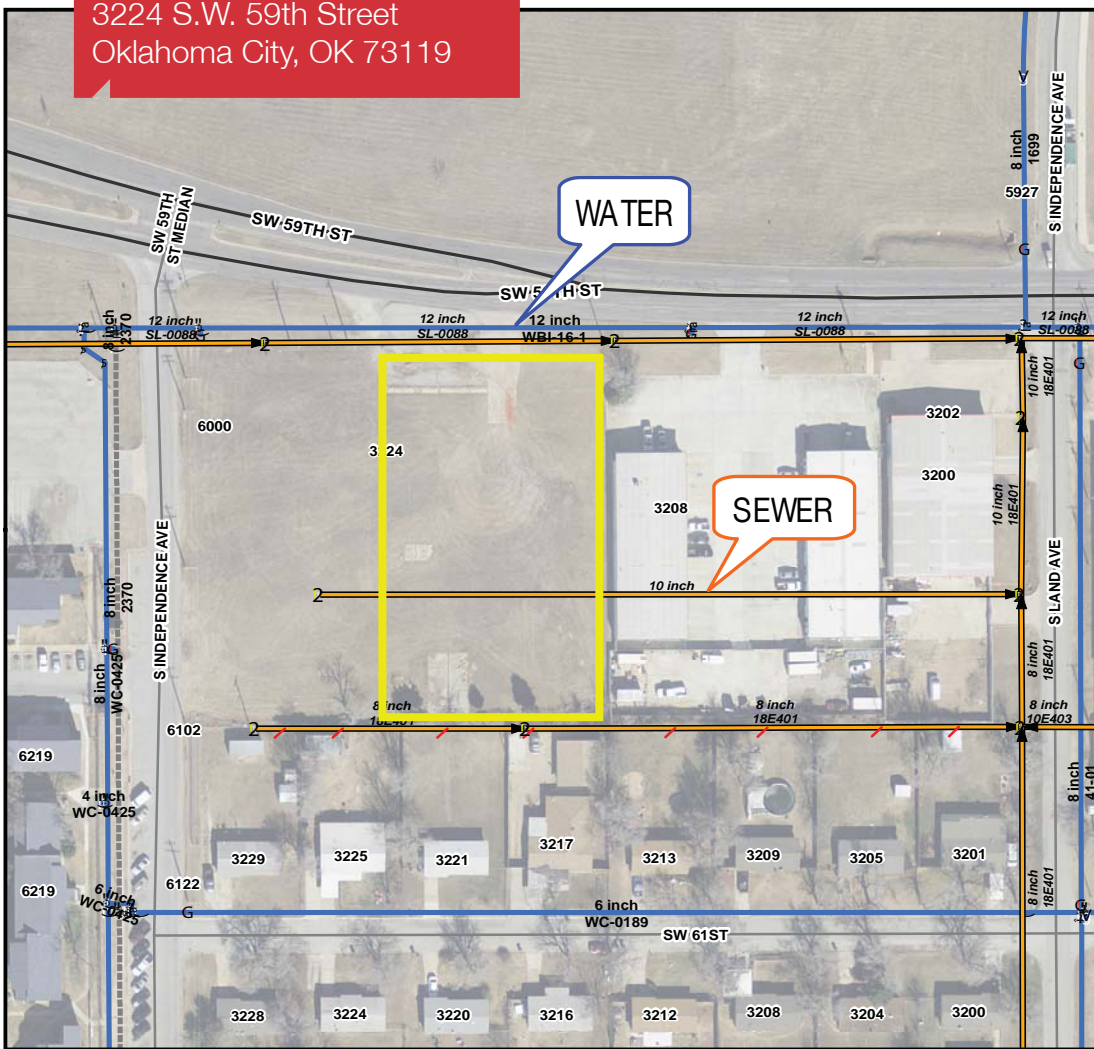
4045 N.W. 64th Street, Suite 340

Oklahoma City, Oklahoma 73116

Office: 1 405 840 0600

Fax: 1 405 840 0610

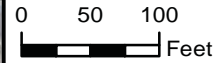
3224 S.W. 59th Street
Oklahoma City, OK 73119



Legend

- 2 S Standard Manhole
- Sewer Lateral Line
- Active, Oklahoma City
- Abandoned, Oklahoma City
- G Water Hydrant
- () Gate
- ? Tapping
- Active, Oklahoma City

Neither the City nor any of its trusts nor any of its employees, officers, or agents warrant or represent that the information or data on this document is accurate or appropriate for use or re-use for any purpose. The user of this document assumes the sole duty and full responsibility for the verification of the information and data contained therein. Any use of or reliance upon this document or the information or data contained therein is solely, totally, and exclusively at the users own risk.



DEMOGRAPHICS

Population		
1 Mile: 12,302	3 Mile: 90,238	5 Mile: 165,721
Average Household Income		
1 Mile: \$35,268	3 Mile: \$38,280	5 Mile: \$41,363
Total Households		
1 Mile: 4,440	3 Mile: 33,004	5 Mile: 61,016

LOCATION HIGHLIGHTS

- Frontage: 200' on S.W. 59th Street
- Dimensions: 200' x 284'
- Close to I-240

Darryl Meason
Cell: 1 405 205 9440
darryl@naisullivangroup.com

www.naisullivangroup.com



4045 N.W. 64th Street, Suite 340
Oklahoma City, Oklahoma 73116
Office: 1 405 840 0600
Fax: 1 405 840 0610