



[View Additional Photos](#)

# For Lease

**+44,000 s.f. (Divisible to +9,000 s.f.)**

**Shell complete Q2 2020**

## Site features:

- Total size: +44,000 s.f. (400' x 110')
- Office: to suit
- Divisible to: +9,000 s.f.
- Rear load configuration
- 24' clear height
- Column spacing: 32' x 55'
- Loading access: 22 dock high doors (9' x 10')
- Truck court depth: 120'
- ESFR sprinklers
- Power: 1200 amps, 3-phase
- Passenger vehicle parking: 119 spaces (2.7:1,000)
- Drive-in ramps with 14' x 16' oversized doors
- Location:
  - 0.6 miles west of Beltway 8
  - +6 miles to I-10
  - +19 miles to Bush Intercontinental Airport
- For distribution and light industrial uses

**SIGNAGE AVAILABLE DIRECTLY ON HWY. 90  
VISIBLE FROM BELTWAY 8**

**Liberty Lakes Industrial Park  
14700 Crosby Fwy (Hwy 90)  
Houston, Texas 77049**

**Mark Nicholas, SIOR**

+1 713 888 4024

[mark.nicholas@am.jll.com](mailto:mark.nicholas@am.jll.com)

**Richard Quarles, SIOR**

+1 713 888 4019

[richard.quarles@am.jll.com](mailto:richard.quarles@am.jll.com)

**Joe Berwick**

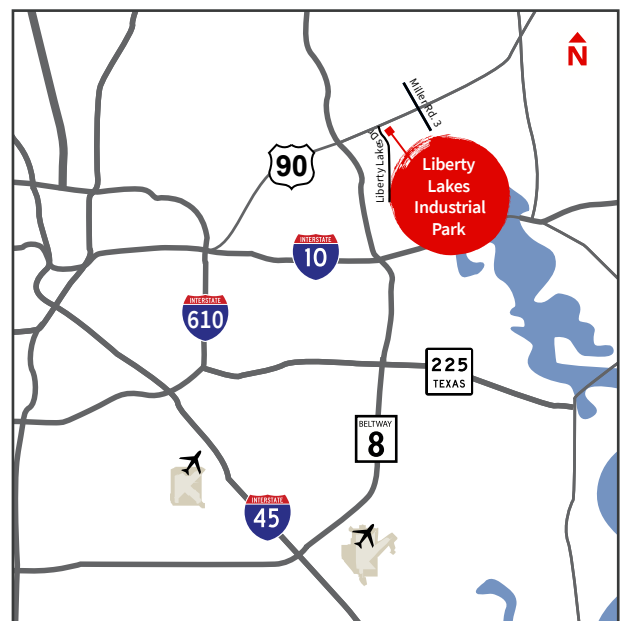
+1 713 425 5842

[joe.berwick@am.jll.com](mailto:joe.berwick@am.jll.com)

**Will Clay**

+1 713 425 1810

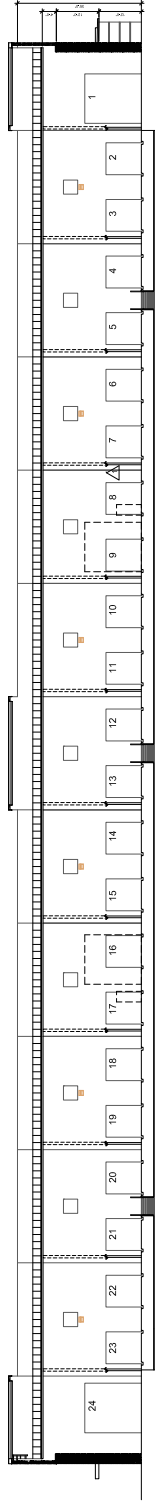
[will.clay@am.jll.com](mailto:will.clay@am.jll.com)



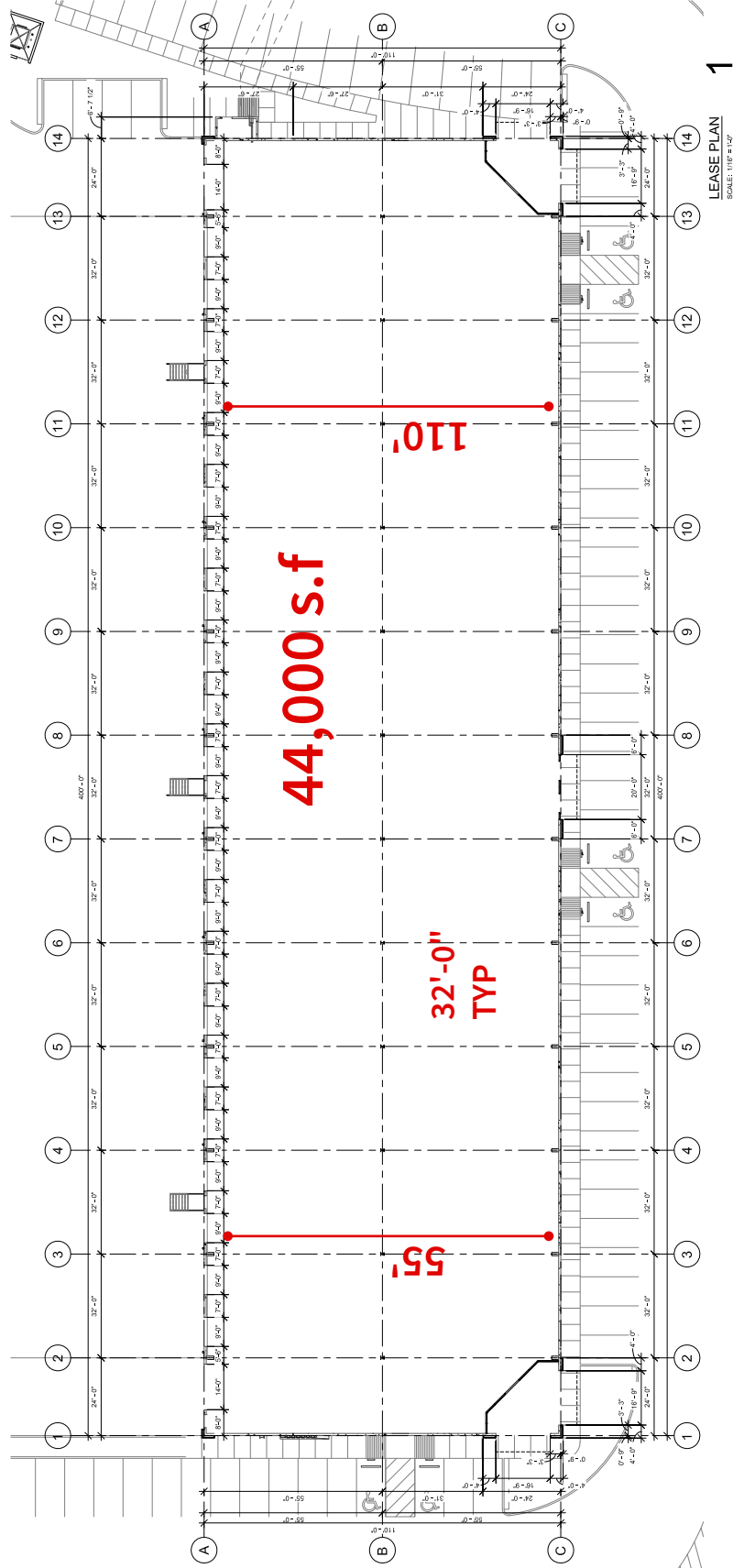
# For Lease

**±44,000 s.f. available**  
**(Divisible to ±9,000 s.f.)**

Liberty Lakes Industrial Park  
14700 Crosby Fwy | Houston, Texas 77049

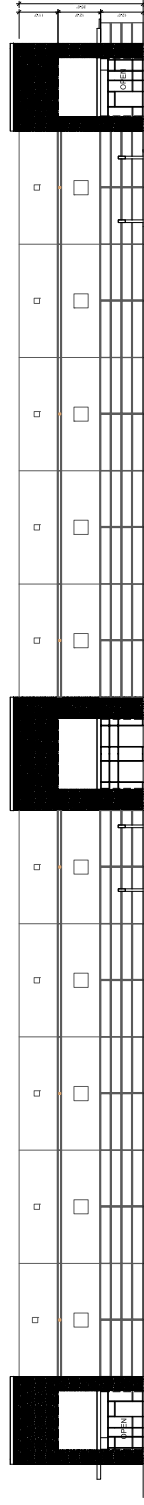


**SOUTH ELEVATION 3**  
SCALE: 1/8" = 1'-0"



**1**

**LEASE PLAN**  
SCALE: 1/16" = 1'-0"



**NORTH ELEVATION 2**  
SCALE: 1/16" = 1'-0"

# For Lease

**±44,000 s.f. available**  
**(Divisible to ±9,000 s.f.)**

Liberty Lakes Industrial Park  
14700 Crosby Fwy | Houston, Texas 77049

