



# 1902 W Parkside Lane

PHOENIX, AZ

## FOR LEASE



Fully furnished  
bank with  
19th Avenue  
frontage  
available

**ERIC BELL, SIOR**  
602.513.5151  
eric.bell@kidder.com

**MIKE CIOSEK, SIOR**  
602.513.5135  
mike.ciosek@kidder.com

**DYLAN SCOTT**  
602.513.5104  
dylan.scott@kidder.com

**Kidder  
Mathews**

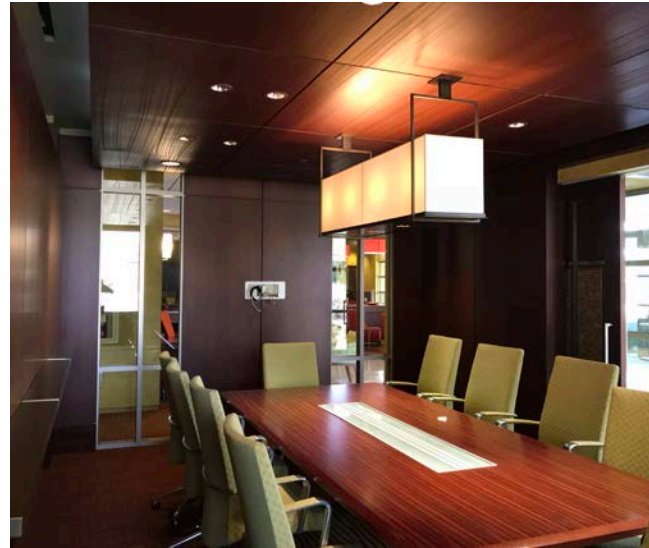
This information supplied herein is from sources we deem reliable. It is provided without any representation, warranty, or guarantee, expressed or implied as to its accuracy. Prospective Buyer or Tenant should conduct an independent investigation and verification of all matters deemed to be material, including, but not limited to, statements of income and expenses. Consult your attorney, accountant, or other professional advisor.

**KIDDER.COM**

**FOR LEASE**

# 1902 W Parkside Lane

PHOENIX, AZ



## **PROPERTY HIGHLIGHTS**

**±7,352 SF** available

**LOCATED** with 19th Ave frontage South of Pinnacle Peak Rd

**FULLY FURNISHED** bank, 7 private offices, conference, teller desk, vault, break area

**±37** parking spaces with 10 covered spaces available

**C-2 ZONING**, City of Phoenix

**BUILT** in 2005

**MONUMENT SIGNAGE** along 19th Ave available

**SEVERAL** hotels, restaurants, and retail facilities within minutes

**LEASE RATE** of \$15/SF NNN or \$21/SF Gross

**ERIC BELL, SIOR**  
602.513.5151  
[eric.bell@kidder.com](mailto:eric.bell@kidder.com)

**MIKE CIOSEK, SIOR**  
602.513.5135  
[mike.ciosek@kidder.com](mailto:mike.ciosek@kidder.com)

**DYLAN SCOTT**  
602.513.5104  
[dylan.scott@kidder.com](mailto:dylan.scott@kidder.com)

**KIDDER.COM**

This information supplied herein is from sources we deem reliable. It is provided without any representation, warranty, or guarantee, expressed or implied as to its accuracy. Prospective Buyer or Tenant should conduct an independent investigation and verification of all matters deemed to be material, including, but not limited to, statements of income and expenses. Consult your attorney, accountant, or other professional advisor.

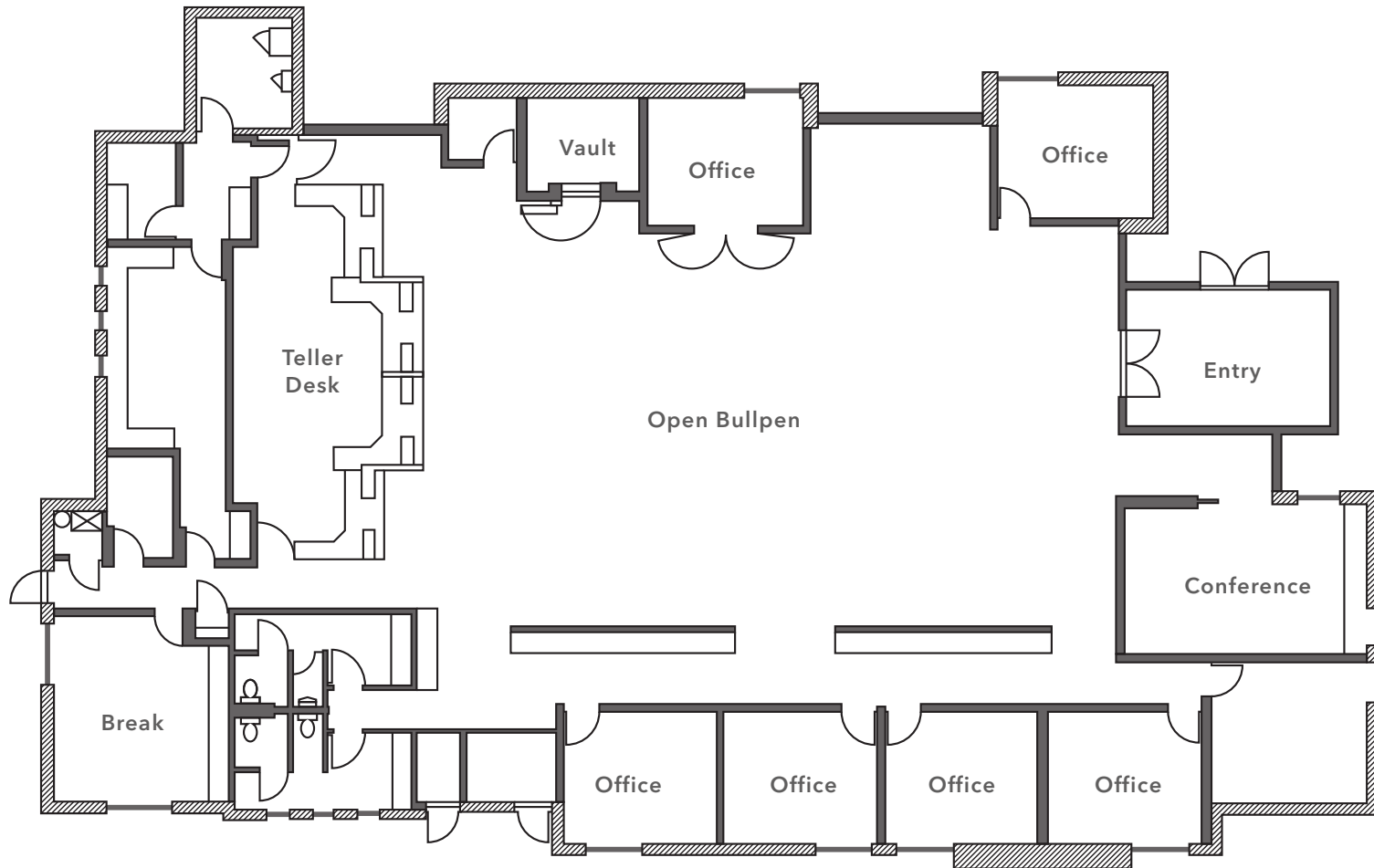
**km** Kidder  
Mathews



**FOR LEASE**

# 1902 W Parkside Lane

PHOENIX, AZ



[KIDDER.COM](http://KIDDER.COM)

This information supplied herein is from sources we deem reliable. It is provided without any representation, warranty, or guarantee, expressed or implied as to its accuracy. Prospective Buyer or Tenant should conduct an independent investigation and verification of all matters deemed to be material, including, but not limited to, statements of income and expenses. Consult your attorney, accountant, or other professional advisor.



**FOR LEASE**

# 1902 W Parkside Lane

PHOENIX, AZ



KIDDER.COM

This information supplied herein is from sources we deem reliable. It is provided without any representation, warranty, or guarantee, expressed or implied as to its accuracy. Prospective Buyer or Tenant should conduct an independent investigation and verification of all matters deemed to be material, including, but not limited to, statements of income and expenses. Consult your attorney, accountant, or other professional advisor.

**km** Kidder Mathews



**FOR LEASE**

# 1902 W Parkside Lane

PHOENIX, AZ



[KIDDER.COM](https://www.kidder.com)

This information supplied herein is from sources we deem reliable. It is provided without any representation, warranty, or guarantee, expressed or implied as to its accuracy. Prospective Buyer or Tenant should conduct an independent investigation and verification of all matters deemed to be material, including, but not limited to, statements of income and expenses. Consult your attorney, accountant, or other professional advisor.

**km** Kidder  
Mathews