

# STRAUSS

REALTY, LTD.

3005 N. BROADWAY  
CHICAGO, IL. 60657

## RETAIL/OFFICE SPACE FOR LEASE IN THE HEART OF LAKEVIEW



**Space Available:** Approx. 1,500 SF    **Rental Rate:** \$35 PSF Gross    **Zoning:** B3-2



**CRAIG WOLF**

847-989-9653

CRAIG@STRAUSSREALTY.COM

**STRAUSS REALTY, LTD.**  
4220 W. MONTROSE AVENUE  
CHICAGO, ILLINOIS 60641  
PHONE: 773-736-3600

# STRAUSS

REALTY, LTD.

3005 N. BROADWAY  
CHICAGO, IL. 60657



**CRAIG WOLF**

847-989-9653

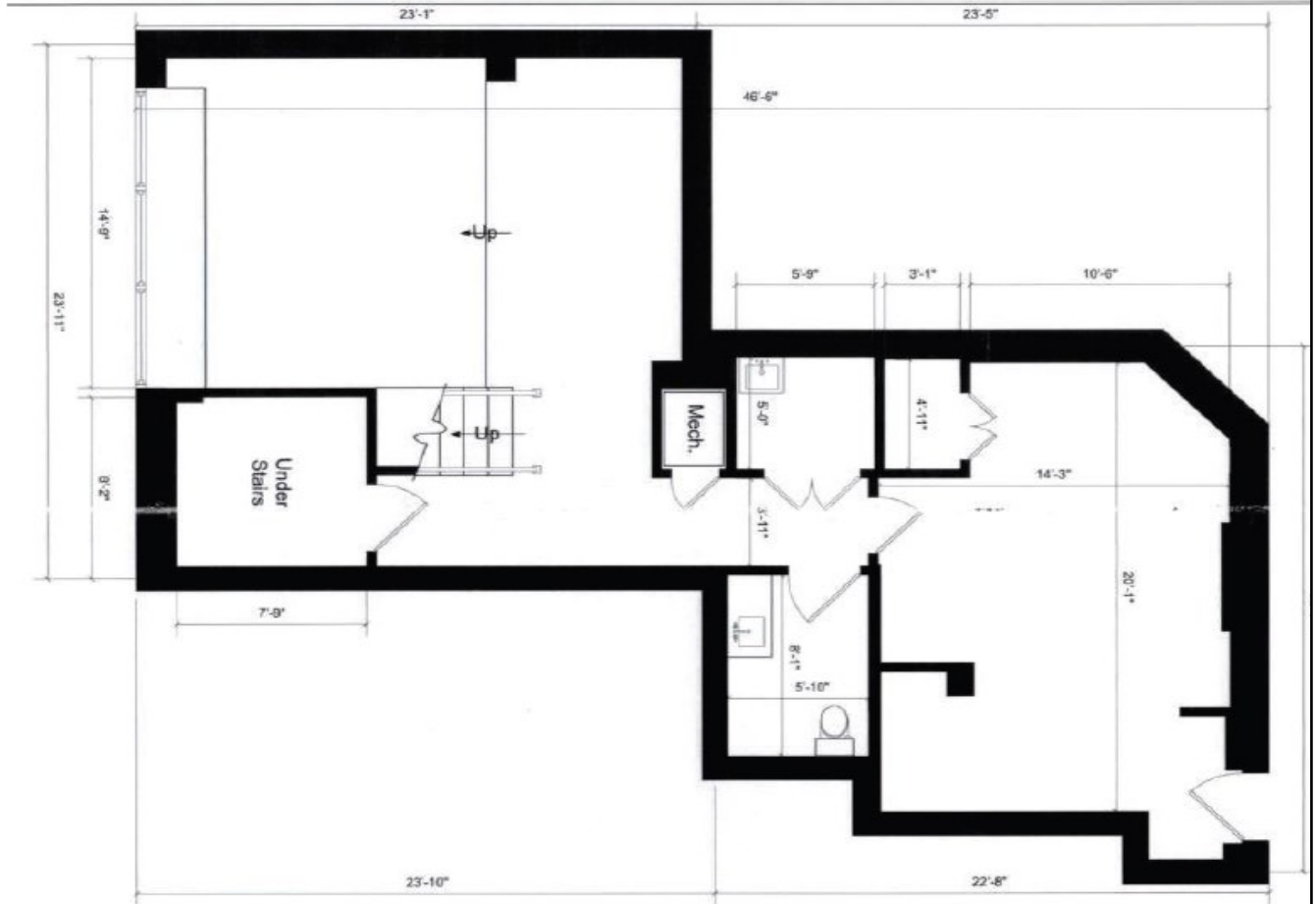
CRAIG@STRAUSSREALTY.COM

**STRAUSS REALTY, LTD.**  
4220 W. MONTROSE AVENUE  
CHICAGO, ILLINOIS 60641  
PHONE: 773-736-3600

This flyer was produced using data from private and government sources deemed reliable. The information herein is provided without representation.



### Floor Plan (Lower Level):



**CRAIG WOLF**

847-989-9653

CRAIG@STRAUSSREALTY.COM

**STRAUSS REALTY, LTD.**

4220 W. MONTROSE AVENUE

CHICAGO, ILLINOIS 60641

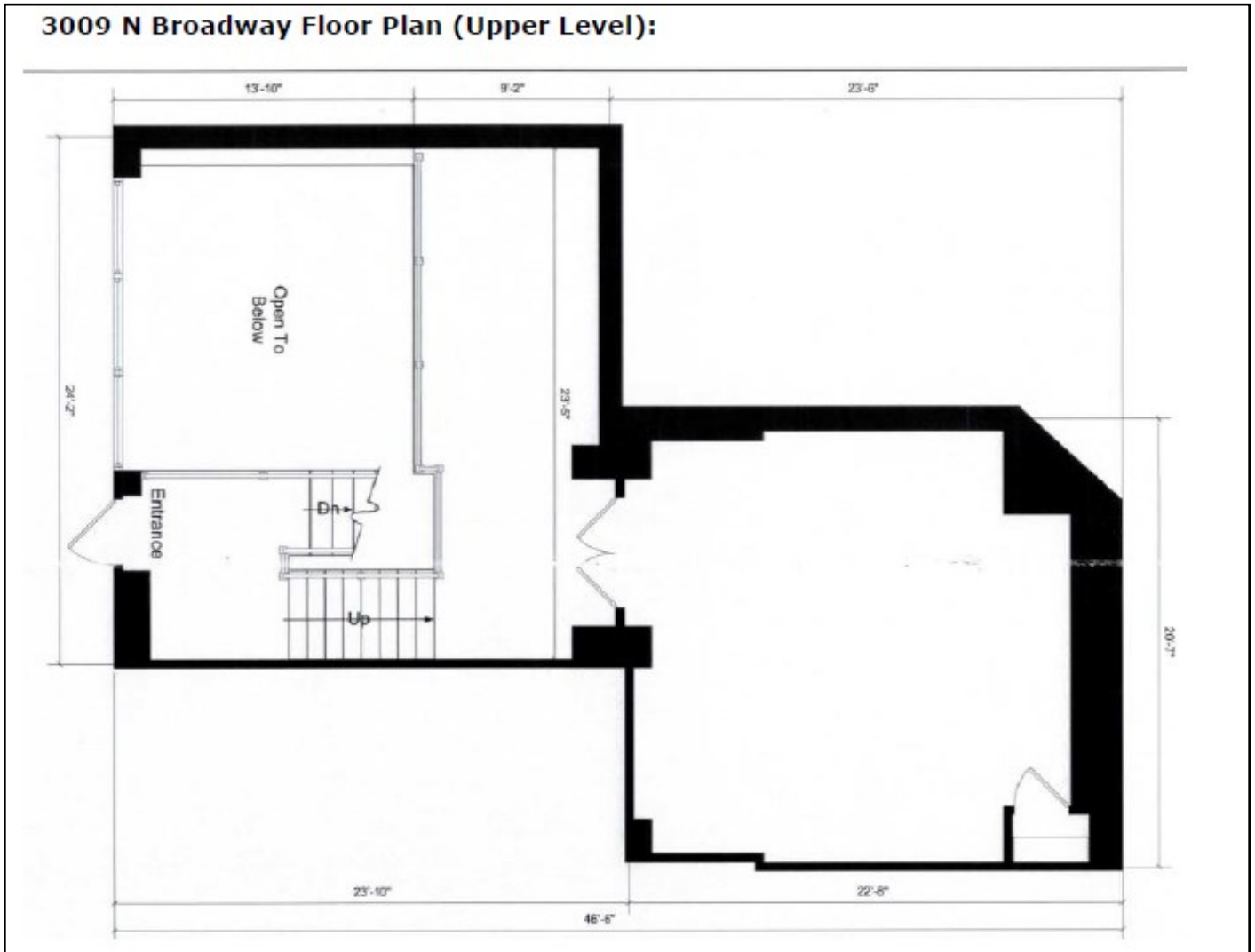
PHONE: 773-736-3600

# STRAUSS

REALTY, LTD.

3005 N. BROADWAY  
CHICAGO, IL. 60657

## 3009 N Broadway Floor Plan (Upper Level):



**CRAIG WOLF**

847-989-9653

CRAIG@STRAUSSREALTY.COM

**STRAUSS REALTY, LTD.**

4220 W. MONTROSE AVENUE

CHICAGO, ILLINOIS 60641

PHONE: 773-736-3600

# STRAUSS

REALTY, LTD.

3005 N. BROADWAY

CHICAGO, IL. 60657



CRAIG WOLF

847-989-9653

CRAIG@STRAUSSREALTY.COM

STRAUSS REALTY, LTD.

4220 W. MONTROSE AVENUE

CHICAGO, ILLINOIS 60641

PHONE: 773-736-3600