

# 0.27 Acre Lot / Rogersville, MO



E. US HWY., ROGERSVILLE, MO 65742

COVER PAGE

For Sale



For more information please contact:

**David Havens**

Senior Broker

417.877.7900 x101

dhavens@jaredcommercial.com

**Curtis Jared**

President & CEO

417.877.7900 x111

cjared@jaredenterprises.com

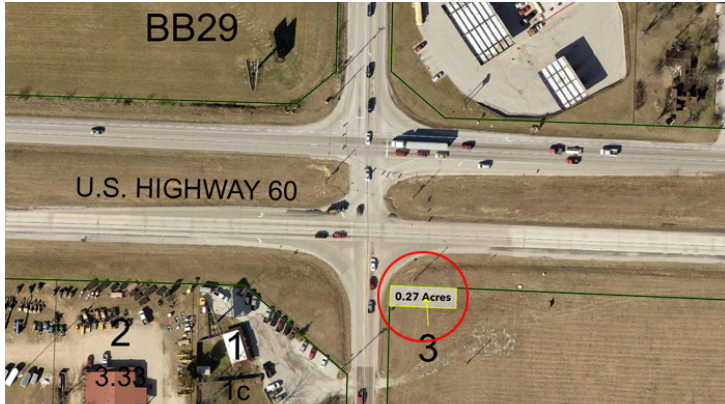
# 0.27 Acre Lot / Rogersville, MO



E. US HWY., ROGERSVILLE, MO 65742

EXECUTIVE SUMMARY

For Sale



## PROPERTY OVERVIEW

0.27 Acre lot for sale on Hwy 60 and state Highway 125 in Rogersville, MO.

## PROPERTY HIGHLIGHTS

- East access.
- Great visibility from Highway.
- Located on highway 60.
- High traffic count.
- 11,761.2 SqFt

## PROPERTY SUMMARY

Sale Price:	\$117,000
Lot Size:	0.27 Acres
APN #:	88-20-22-200-003
Zoning:	Residential
Market:	Rogersville, MO
Cross Streets:	State Highway 125

# 0.27 Acre Lot / Rogersville, MO



E. US HWY., ROGERSVILLE, MO 65742

RETAILER MAP

For Sale



Google

Map data ©2018 Google Imagery ©2018 , DigitalGlobe, USDA Farm Service Agency

2870 S Ingram Mill Rd | Springfield, MO 65804 | 417.877.7900 | Fax: 417.877.7689 | [www.jaredcommercial.com](http://www.jaredcommercial.com)

The information listed above has been obtained from sources we believe to be reliable, however, we accept no responsibility for its correctness.



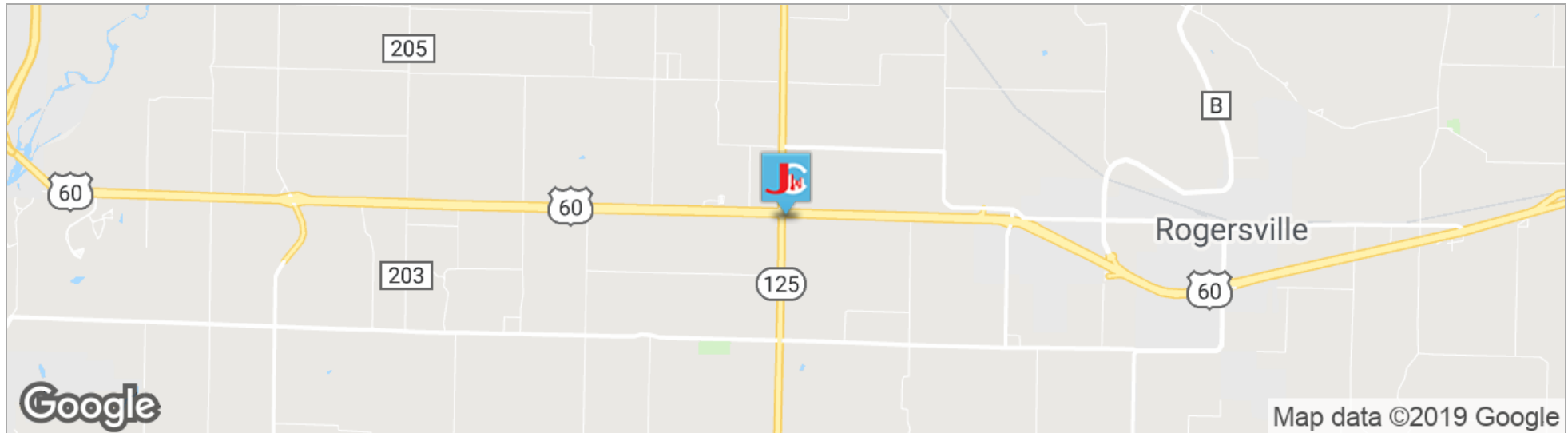
# 0.27 Acre Lot / Rogersville, MO



E. US HWY., ROGERSVILLE, MO 65742

LOCATION MAPS

For Sale



## POPULATION

	1 MILE	5 MILES	10 MILES
TOTAL POPULATION	250	8,432	83,190
MEDIAN AGE	44.3	42.3	39.9
MEDIAN AGE (MALE)	44.7	42.5	38.8
MEDIAN AGE (FEMALE)	44.1	42.4	40.9

## HOUSEHOLDS & INCOME

	1 MILE	5 MILES	10 MILES
TOTAL HOUSEHOLDS	103	3,341	33,975
# OF PERSONS PER HH	2.4	2.5	2.4
AVERAGE HH INCOME	\$76,114	\$85,153	\$76,826
AVERAGE HOUSE VALUE		\$276,791	\$227,851

## PROPERTY HIGHLIGHTS

- East access.
- Great visibility from Highway.
- Located on highway 60.
- High traffic count.
- 11,761.2 SqFt

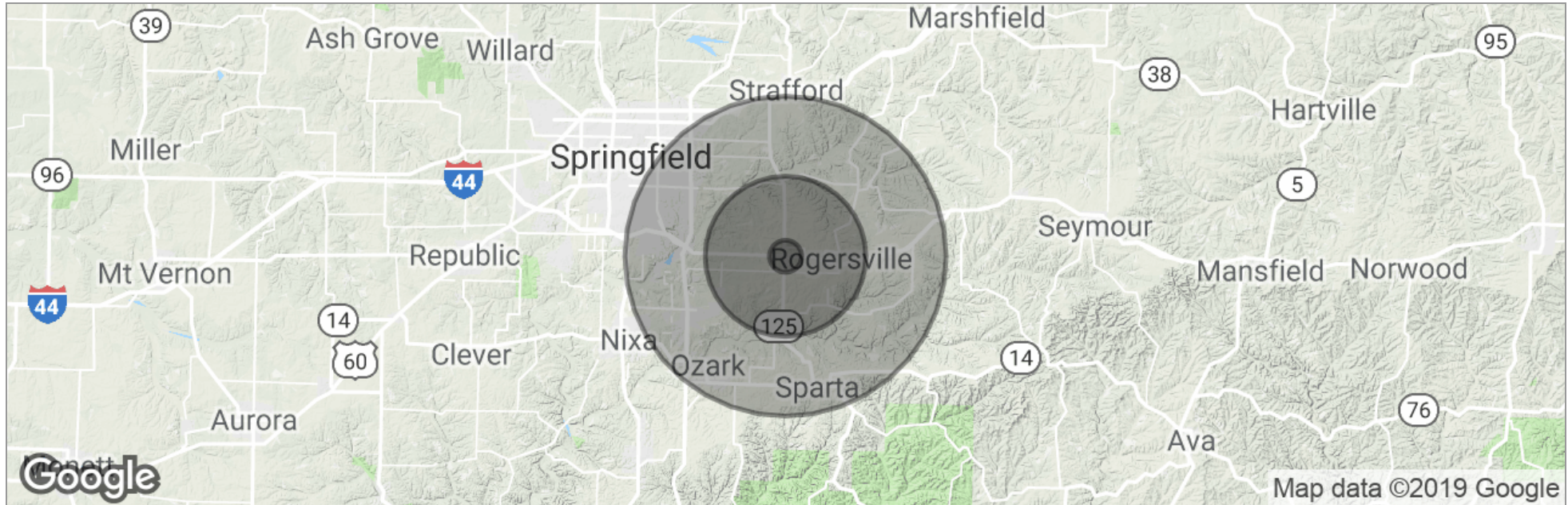
# 0.27 Acre Lot / Rogersville, MO



E. US HWY., ROGERSVILLE, MO 65742

DEMOGRAPHICS MAP

For Sale



	1 Mile	5 Miles	10 Miles
Total Population	250	8,432	83,190
Population Density	80	107	265
Median Age	44.3	42.3	39.9
Median Age (Male)	44.7	42.5	38.8
Median Age (Female)	44.1	42.4	40.9
Total Households	103	3,341	33,975
# of Persons Per HH	2.4	2.5	2.4
Average HH Income	\$76,114	\$85,153	\$76,826
Average House Value		\$276,791	\$227,851

\* Demographic data derived from 2010 US Census

# 0.27 Acre Lot / Rogersville, MO



E. US HWY., ROGERSVILLE, MO 65742

CONTACT

For Sale

## DAVID HAVENS Senior Broker



2870 S Ingram Mill Rd  
Springfield, MO 65804

T 417.877.7900 x101  
C 417.350.4771  
dhavens@jaredcommercial.com  
MO #2015037234

### Memberships & Affiliations

CCIM, ICSC, NAR, MAR.

### Education

Bachelors Degree in Business Administration from University of Northern Colorado.  
Entrepreneurship Certificate from University of Northern Colorado  
CCIM Candidate  
Missouri and Colorado Real Estate License  
Business Brokerage Certificate- VR

# 0.27 Acre Lot / Rogersville, MO



E. US HWY., ROGERSVILLE, MO 65742

CONTACT

For Sale

## CURTIS JARED President & CEO



2870 S Ingram Mill Rd  
Springfield, MO 65804

T 417.877.7900 x111  
C 417.840.9001  
F 417.877.7689  
cjared@jaredenterprises.com  
MO #2012016985

### Memberships & Affiliations

BOMA International  
ICSC  
Missouri Realtors  
National Association of Realtors

### Education

BA - Drury University  
Real Estate License