

FOR LEASE

345 W PORTAL AVE.

SAN FRANCISCO, CA 94127



FOR MORE INFORMATION, CONTACT:

DEREK KAPTANOGLU/ Leasing & Sales Associate

E: derek@starboardnet.com

C: 650.339.2004 | BRE # 02043281



ENTREPRENEURIAL • LOCAL • INDEPENDENT



345 W PORTAL AVE., 3RD FLOOR - UNIT 320

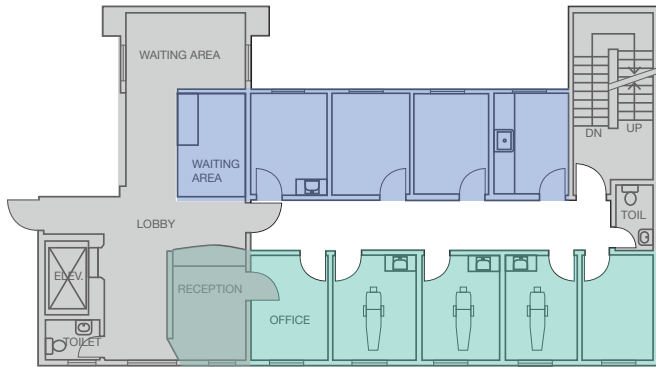
Square Ft. ±578

Rate: \$65 PSF/YR

Type: Modified Gross

Term: 3 - 10 Years

- » 578 SF of exclusive medical/dental space
- » Shared common areas with another dentist
- » 3 office/medical rooms
- » Kitchenette
- » Reception & waiting area
- » Move-in ready



Available

Occupied



FOR MORE INFORMATION, CONTACT:

DEREK KAPTANOGLU/ Leasing & Sales Associate

E: derek@starboardnet.com

C: 650.339.2004 | BRE # 02043281

STARBOARD
COMMERCIAL REAL ESTATE

ENTREPRENEURIAL • LOCAL • INDEPENDENT

TCN
WORLDWIDE
REAL ESTATE SERVICES

4TH FLOOR - UNITS 400 & 410

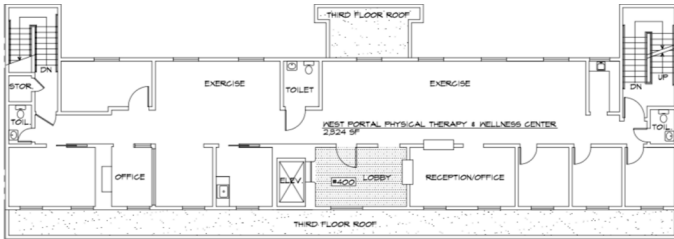
Square Ft. 2,487 Square Feet

Rate: \$65/PSF/YR

Type: Modified Gross

Term: 3 - 10 Years

- » 2,487 SF
- » Currently used as a physical therapy office
- » 5 office/medical rooms
- » Kitchenette
- » Reception & waiting area
- » Two Restrooms
- » Available 11/30/18



FOR MORE INFORMATION, CONTACT:

DEREK KAPTANOGLU/ Leasing & Sales Associate

E: derek@starboardnet.com

C: 650.339.2004 | BRE # 02043281

STARBOARD
COMMERCIAL REAL ESTATE

ENTREPRENEURIAL • LOCAL • INDEPENDENT

TCN
WORLDWIDE
REAL ESTATE SERVICES

4TH FLOOR

EXERCISE SMARTER!!!



FOR MORE INFORMATION, CONTACT:

DEREK KAPTANOGLU/ Leasing & Sales Associate

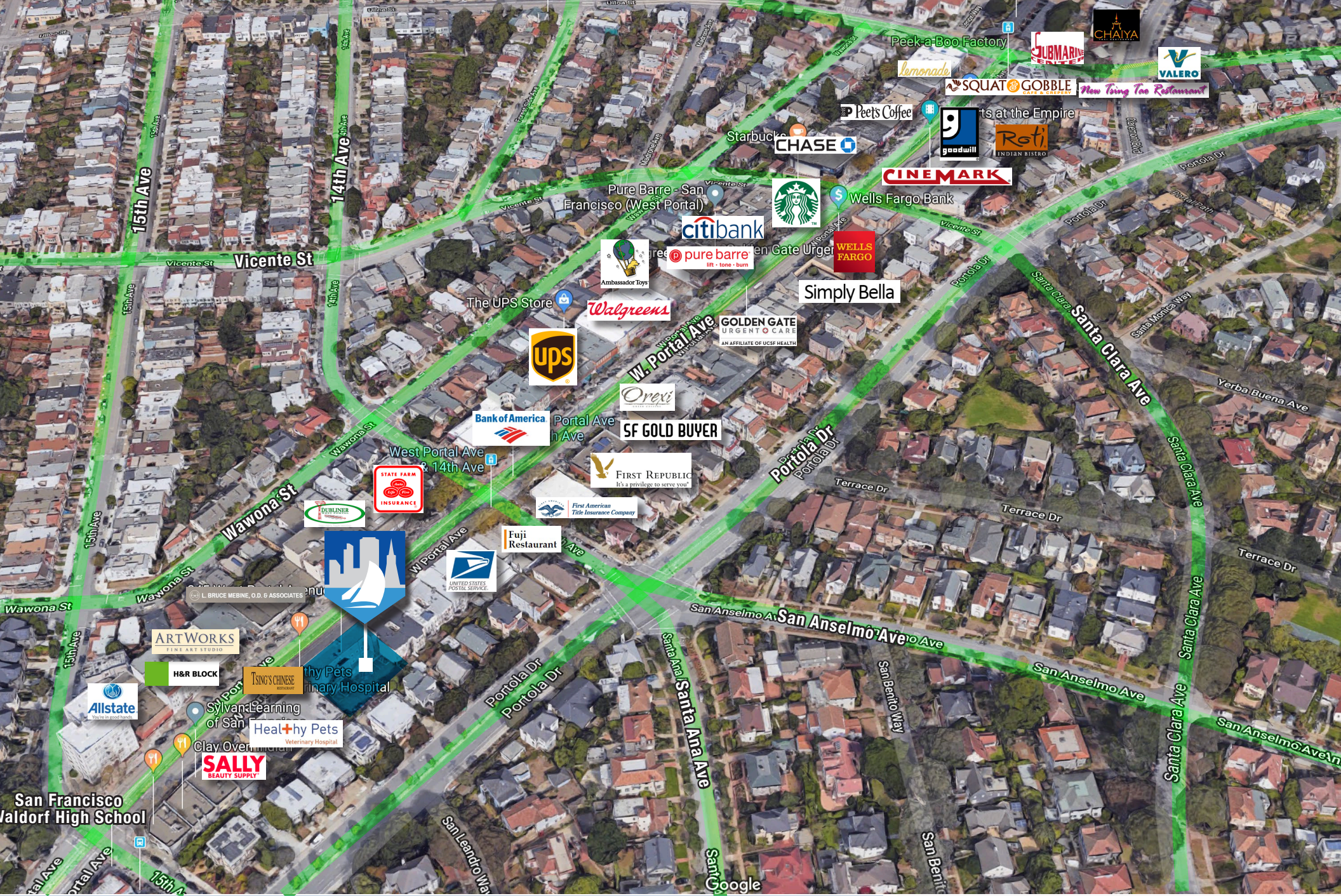
E: derek@starboardnet.com

C: 650.339.2004 | BRE # 02043281



ENTREPRENEURIAL • LOCAL • INDEPENDENT





FOR MORE INFORMATION, CONTACT:

DEREK KAPTANOGLU/ Leasing & Sales Associate

E: derek@starboardnet.com

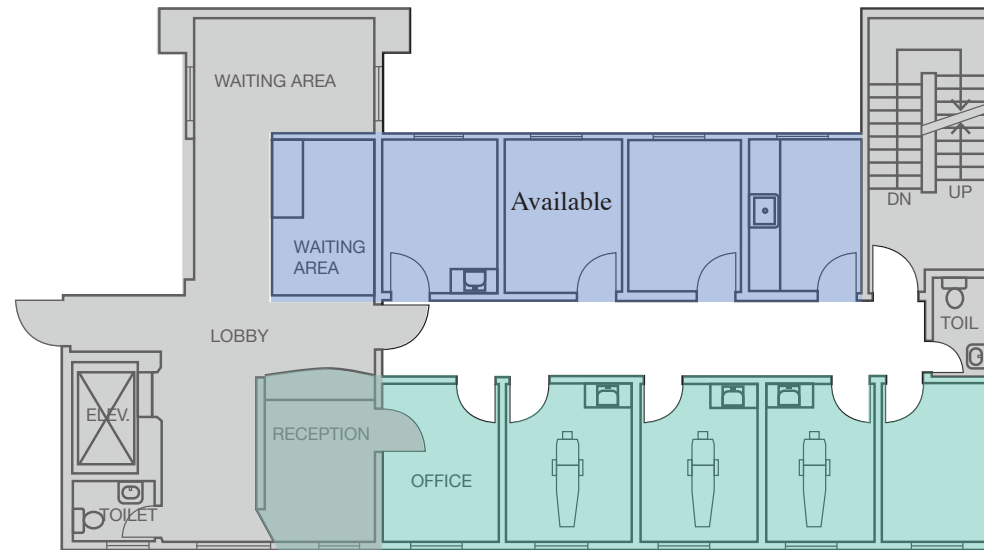
C: 650.339.2004 | BRE # 02043281



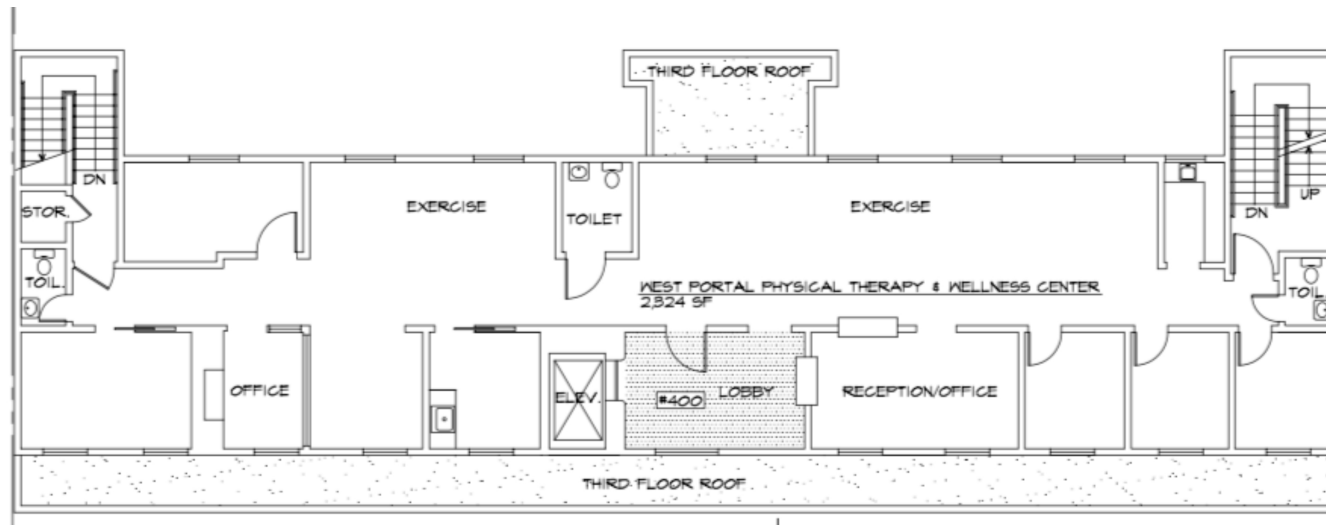
ENTREPRENEURIAL • LOCAL • INDEPENDENT



3RD FLOOR



4TH FLOOR



FOR MORE INFORMATION, CONTACT:

DEREK KAPTANOGLU/ Leasing & Sales Associate

E: derek@starboardnet.com

C: 650.339.2004 | BRE # 02043281



ENTREPRENEURIAL • LOCAL • INDEPENDENT

