

193 CHURCH STREET



SPACE DETAILS

LOCATION

Southeast corner of Duane Street

APPROXIMATE SIZE

Ground Floor	445 SF
Mezzanine	200 SF
Total	645 SF

POSSESSION

Immediate

TERM

Long term

FRONTAGE

12 FT on Church Street

34 FT on Duane Street

SITE STATUS

Formerly Razzle Dazzle Barbershop

NEIGHBORS

CVS Pharmacy (coming soon), Spectrum (coming soon), sweetgreen, Tribeca's Kitchen, Los Tacos No. 1, Verizon, Chipotle Mexican Grille, Heyday and Two Hands

COMMENTS

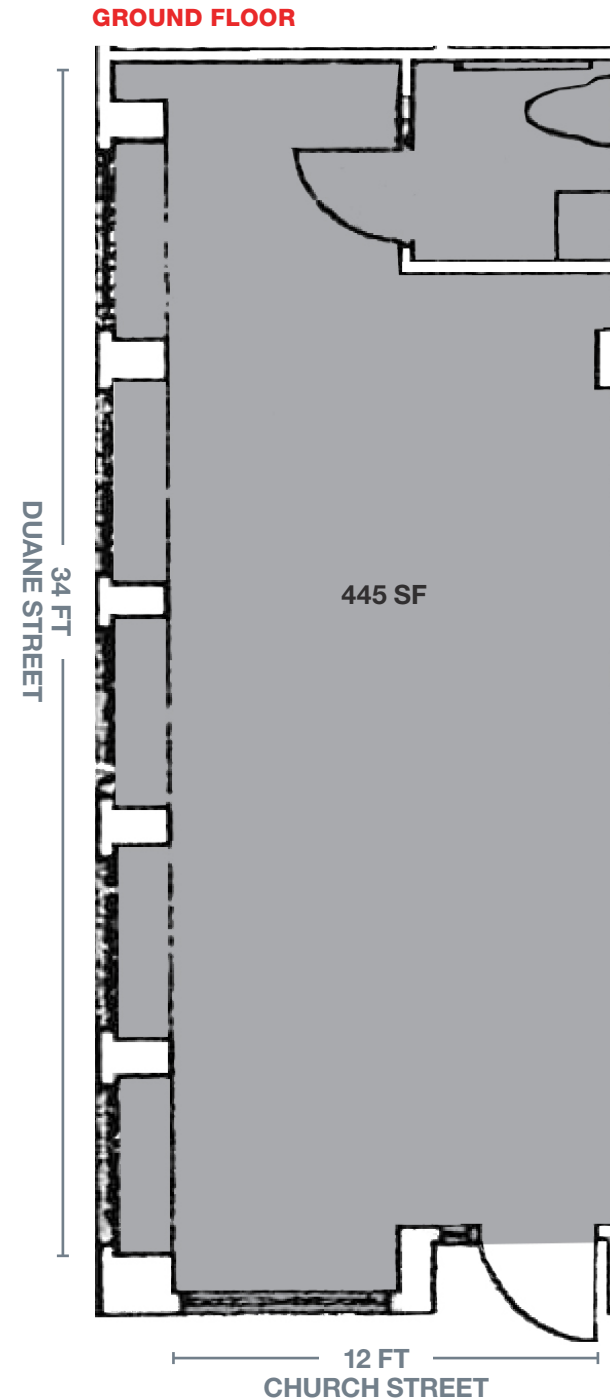
Strong corner with tremendous frontage

Rare Tribeca small space opportunity

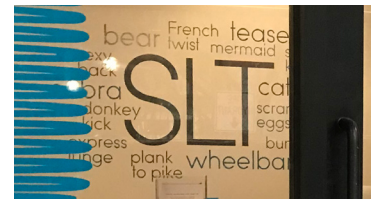
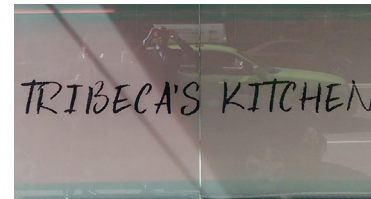
Strong retail adjacencies to fashion, design and restaurant tenants

Most uses considered

Minutes from the World Trade Center, the new Four Seasons Hotel and Brookfield Place



AREA RETAIL



CONTACT EXCLUSIVE AGENT

ANDREW STERN
212.351.9353
andrew.stern@ngkf.com



NGKF.COM

© 2019 NEWMARK KNIGHT FRANK RETAIL. The information contained herein has been obtained from sources deemed reliable but has not been verified and no guarantee, warranty or representation, either express or implied, is made with respect to such information. Terms of sale or lease and availability are subject to change or withdrawal without notice.