

# WOODLAKE

## CORPORATE PARK



800-1080 Parkview | Lombard, Illinois



**Mature trees, extensive landscaping, ponds, and open space** create a different kind of office environment. This natural beauty can be enjoyed not only from your office window but also from outdoor gathering areas and walking paths. The 35 acre setting features seven one-story buildings contain over 260,000 square feet of various size space. Located in Lombard in the center of DuPage county, access is convenient to all directions via I-355 and I-88.

a truly  
unique  
setting

Direct entry space for most spaces with no common area

Individual tenant washrooms for most spaces

Flexible one-story office space

Loading facilities for most spaces

Multiple fiber providers

Individually controlled HVAC

Convenient parking close to individual tenant entries

Minutes to I-355, full interchange at Roosevelt & North Ave.

Abundant area amenities

Tenant identity on building monument signs

Move-in ready and custom suites available

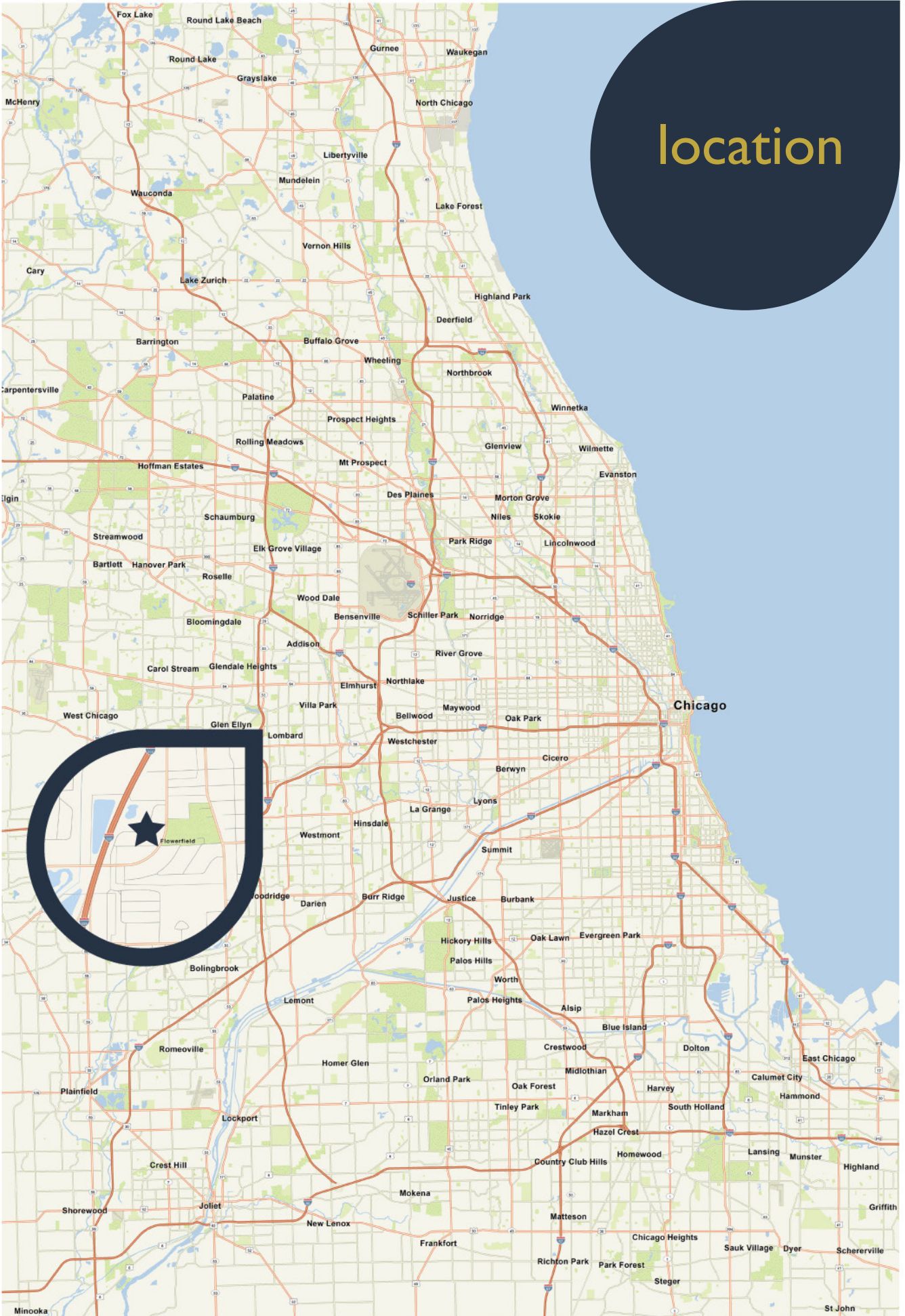
Strong ownership and property management



# site plan

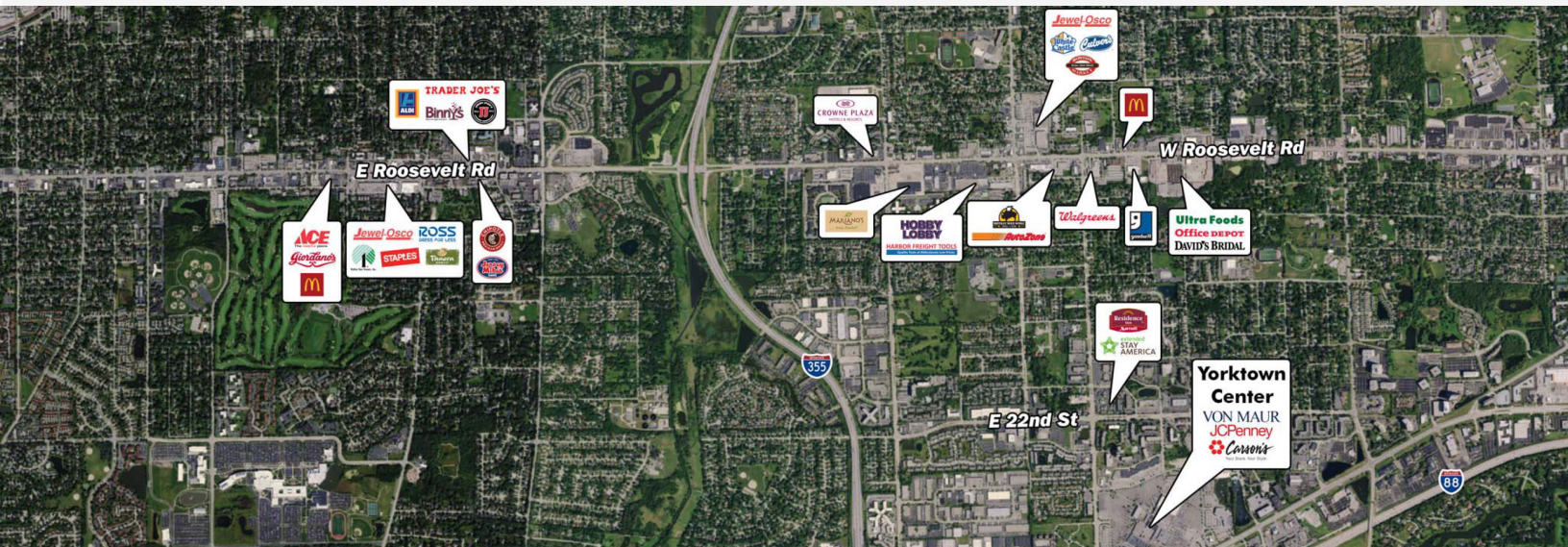


location



**Woodlake Corporate Park** has numerous amenities located within a 2 mile radius including Yorktown Center, a 1.5 million square-foot two-level shopping center with over 150 specialty stores and 20 restaurants. Yorktown Center also features the Shops on Butterfield, home to even more dining and retail amenities.

area  
amenities



## FOR LEASING INFORMATION:

DAN GRAHAM

Senior Vice President  
847.706.4032  
dan.graham@cbre.com

JEFF MANN

Senior Vice President  
630.573.7076  
jeffrey.mann@cbre.com

# CBRE