



±22,065 SF INDUSTRIAL SPACE AVAILABLE

FOR LEASE

300 KING STREET | ELK GROVE VILLAGE, IL 60007

ROSS LEHRMAN
847.588.5671
ross.lehrman@transwestern.com

JUSTIN LERNER, SIOR
847.588.5665
justin.lerner@transwestern.com

MICHAEL MARCONI, SIOR
Managing Broker
847.588.5689
michael.marconi@transwestern.com

±22,065 SF INDUSTRIAL SPACE AVAILABLE

FOR LEASE

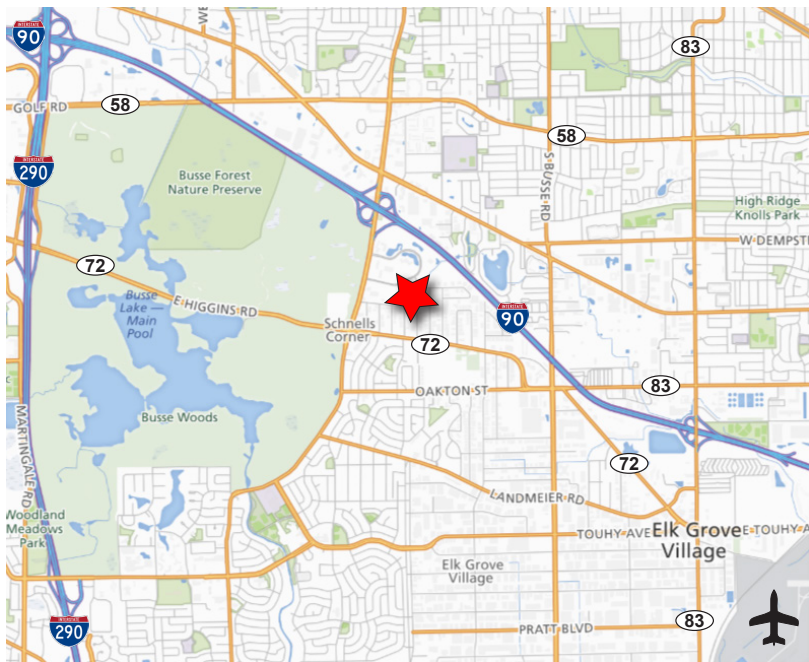
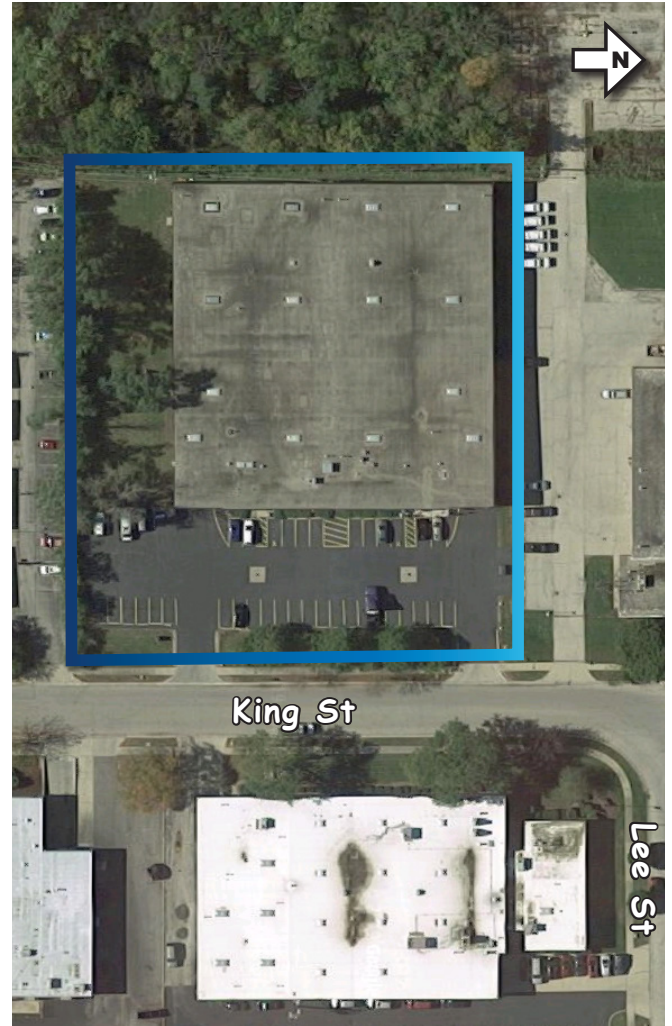
300 KING STREET | ELK GROVE VILLAGE, IL 60007

T TRANSWESTERN®

WESTMOUNT
REALTY CAPITAL, LLC

SPECIFICATIONS

- Building Size: ±44,146 SF
- Available Size: ±22,065 SF
- Land Area: ±2.0 AC
- Office Area: ±2,424 SF
- Ceiling Height: 19' Clear
- Loading: 2 Interior Docks
- Construction: Masonry
- Year Built: 1974
- Power: 400A 120-208V
- Heating: Gas
- Parking: 20 Cars
- Zoning: I-1
- Possession: January 1, 2020
- Lease Rate: Subject to Offer



HIGHLIGHTS

- Professionally owned and managed
- High-image office space
- Immaculate warehouse
- Great access to I-90 via Arlington Heights Road
- Excellent proximity to O'Hare International Airport

ROSS LEHRMAN
847.588.5671
ross.lehrman@transwestern.com

JUSTIN LERNER, SIOR
847.588.5665
justin.lerner@transwestern.com

MICHAEL MARCONI, SIOR
Managing Broker
847.588.5689
michael.marconi@transwestern.com

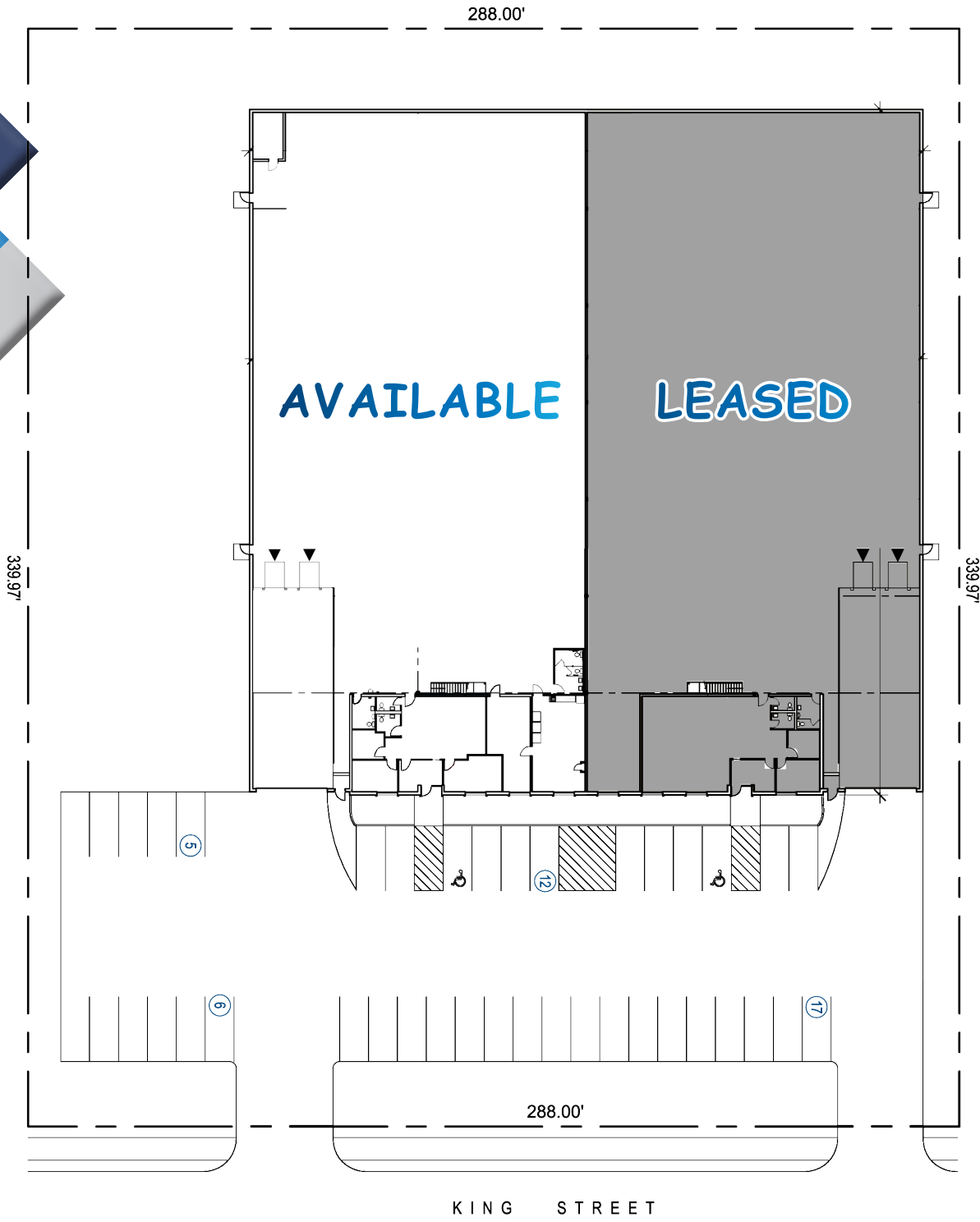
±22,065 SF INDUSTRIAL SPACE AVAILABLE

FOR LEASE

300 KING STREET | ELK GROVE VILLAGE, IL 60007

T TRANSWESTERN®

WESTMOUNT
REALTY CAPITAL, LLC



ROSS LEHRMAN
847.588.5671
ross.lehrman@transwestern.com

JUSTIN LERNER, SIOR
847.588.5665
justin.lerner@transwestern.com

MICHAEL MARCONI, SIOR
Managing Broker
847.588.5689
michael.marconi@transwestern.com