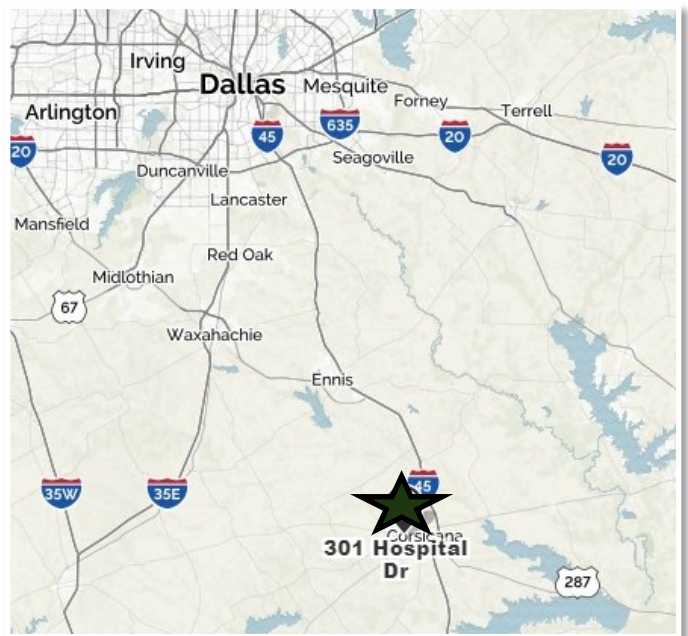


**301 Hospital Drive | Corsicana, TX 75110**

- As little as 275 SF and as much 14,000 SF available for lease
- Conveniently located off HWY 22 next to Navarro County Hospital
- Newly furnished common areas, ample surface parking, and personalized signage
- Room for medical office, general office, flex office, and shop space
- Customizable floorplans



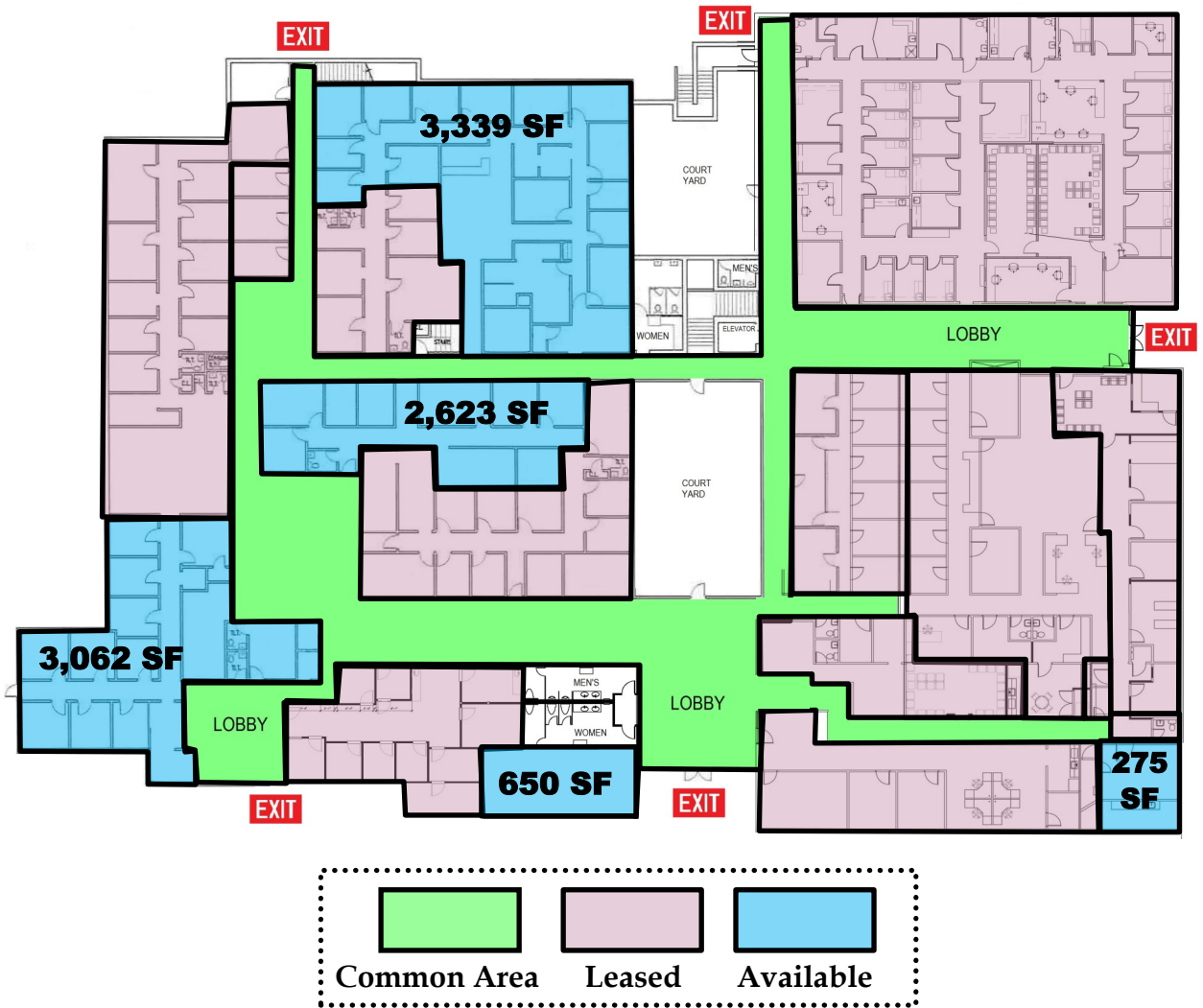
**For Leasing Information**

**Contact Rory Maguire at 817-288-3037**

**Rory@chcdev.com**



# Building A: Around 10,000 SF Available for Lease



# Building B – Over 3,000 SF Available for Lease

