

FINANCIAL  
DISTRICT

NEW YORK  
NY

# 176 BROADWAY



CONCEPTUAL RENDERING

# SPACE DETAILS

## LOCATION

East block between John Street and Maiden Lane

## APPROXIMATE SIZE

### Space A\*

Ground Floor	3,128 SF
Lower Level	3,000 SF

### Space B\*

Ground Floor	500 SF
Basement	500 SF
Mezzanine	800 SF

### Space C

Ground Floor	3,651 SF
Lower Level	4,100 SF
Mezzanine	5,400 SF

*\*Spaces can be combined*

## FRONTAGE

Space A 27 FT on Broadway

Space B 13 FT on Broadway

Space C 28 FT on Broadway

## POSSESSION

Immediate

## SITE STATUS

Space A Formerly William Barthman Jeweler

Space B Currently vacant

Space C Formerly Capital One Bank

## NEIGHBORS

Century 21, Urban Outfitters, Modell's Sporting Goods, Gap, Starbucks, Citibank and TD Bank

## COMMENTS

One block to the Fulton Transit Center with an annual ridership of **26,838,473** with access to the **2 3 4 5 A C J Z R W**  trains

## SPACES A AND B



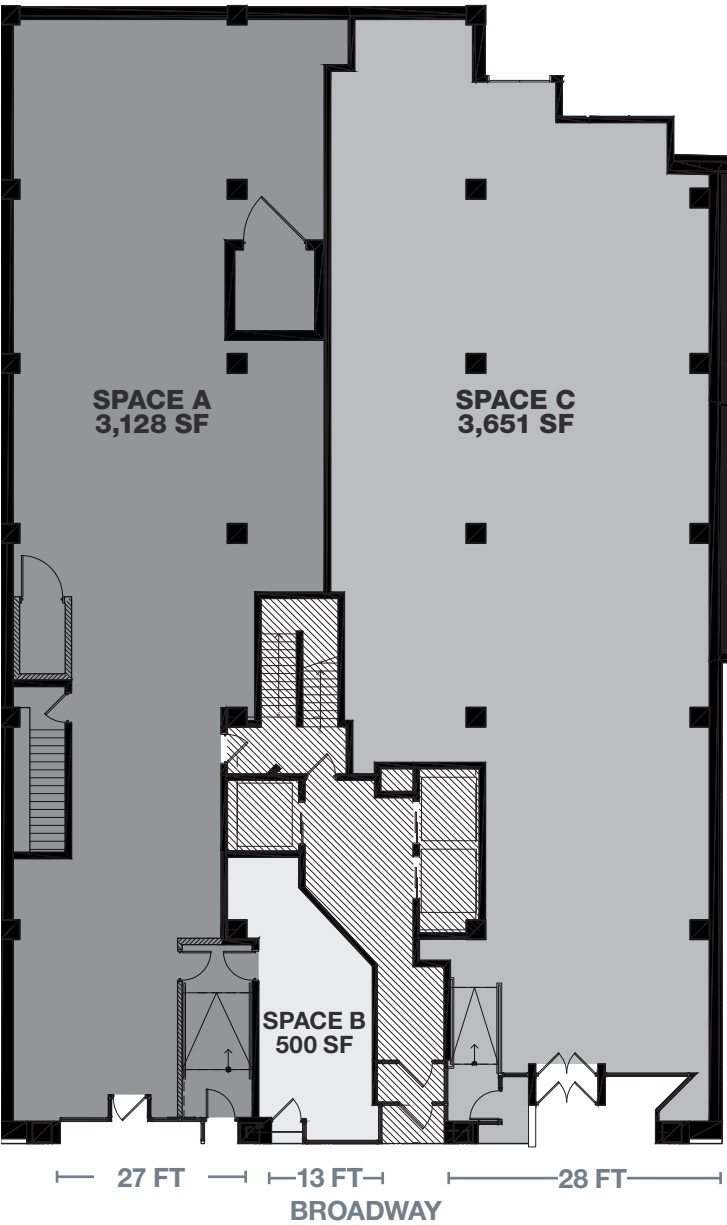
## SPACE C



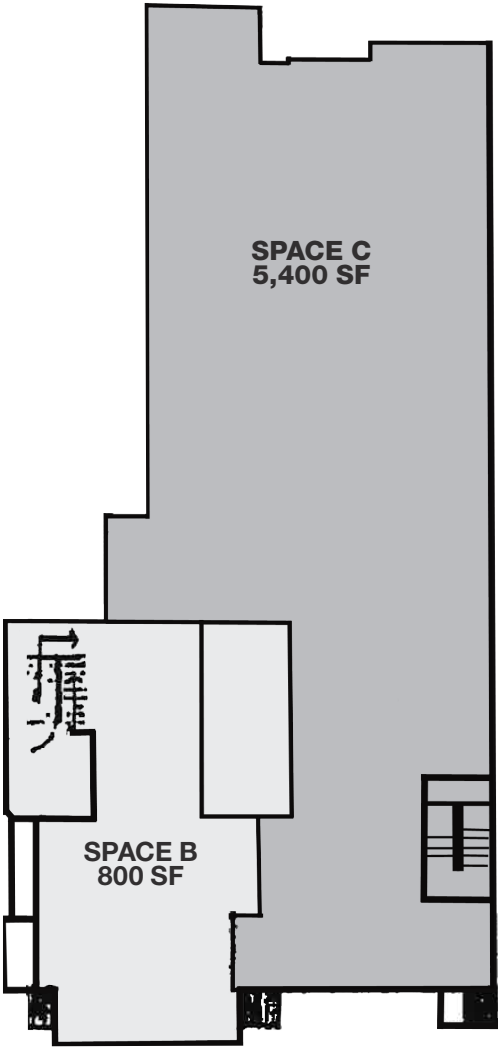


# FLOOR PLANS

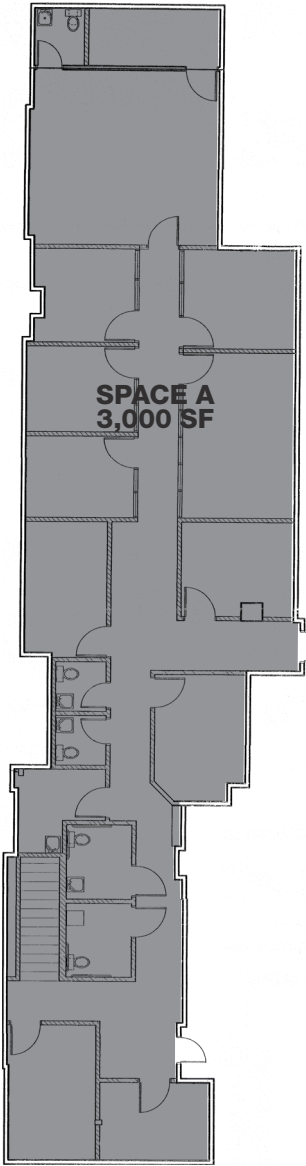
GROUND FLOOR



MEZZANINE



LOWER LEVEL



# AREA RETAIL



## CONTACT EXCLUSIVE AGENTS

**BARRY FISHBACH**  
212.331.0115  
barry.fishbach@ngkf.com

**LUCAS KOOYMAN**  
212.372.2384  
lkooyman@ngkf.com

**JASON PRUGER**  
212.372.2092  
jpruger@ngkf.com



NGKF.COM

© 2019 NEWMARK KNIGHT FRANK RETAIL. The information contained herein has been obtained from sources deemed reliable but has not been verified and no guarantee, warranty or representation, either express or implied, is made with respect to such information. Terms of sale or lease and availability are subject to change or withdrawal without notice.