

FOR LEASE

5606 Summitview Ave
Yakima, WA 98908



SUMMITVIEW CENTER

Don Whittles | Tim Weber | Blake Weber

First Western Properties—Tacoma Inc. | 253.472.0404
6402 Tacoma Mall Blvd, Tacoma, WA 98409 | fwp-inc.com

AVAILABLE




31,024/15,000 SF \$14.00 PSF PLUS NNN

- High visibility retail building previously occupied by Rite Aid
- Located within an established neighborhood shopping center anchored by Safeway
- Parking ratio 3 : 1,000 SF
- Built in 1983
- Zoning LCC
- 19k CPD Summitview Ave
- 3.4k CPD N 56th Ave



NEARBY TENANTS



Regis - 2020	 Population	 Average HH Income	 Daytime Population
Mile 1	10,591	\$99,770	6,518
Mile 3	60,855	\$86,762	44,642
Mile 5	115,389	\$76,866	88,963



LOCATION AERIAL



N 56TH AVE
3.4K CPD

SUMMITVIEW AVE
19K CPD

N 56TH AVE

SUMMIT AVE

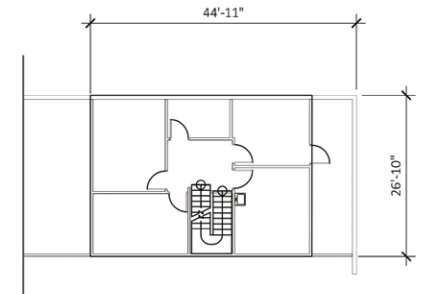
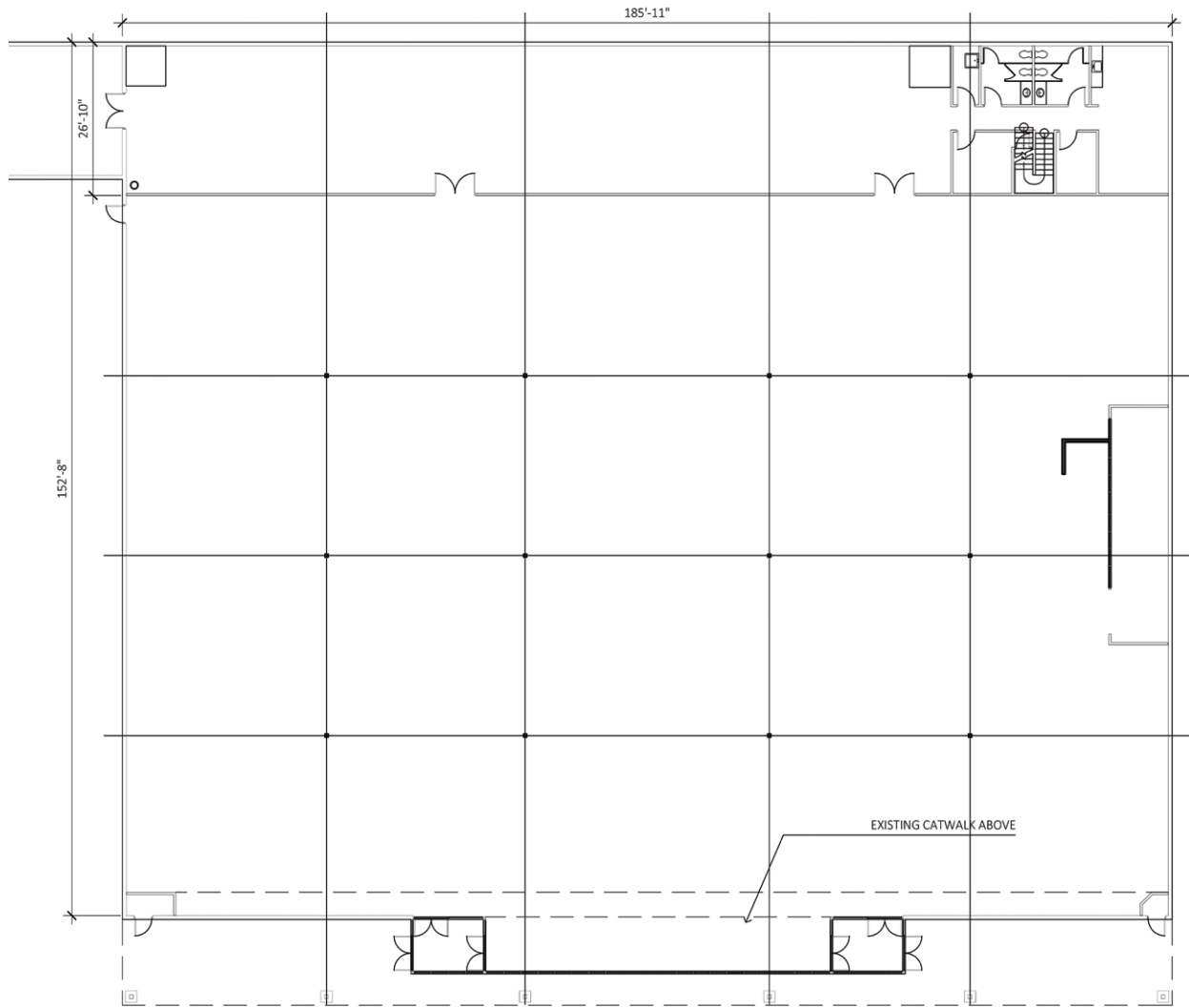
PHOTOS



CONCEPTUAL OPTIONS



FLOOR PLAN



UPPER FLOOR PLAN

SCALE: NOT TO SCALE

TACOMA | KIRKLAND | PORTLAND | SEATTLE



RELATIONSHIP FOCUSED. RESULTS DRIVEN.

DON WHITTLES

253.471.5509
dwhittles@firstwesternproperties.com

TIM WEBER

253.471.5502
tweber@firstwesternproperties.com

BLAKE WEBER

253.284.3646
bweber@firstwesternproperties.com



First Western Properties—Tacoma Inc. | 253.472.0404
6402 Tacoma Mall Blvd, Tacoma, WA 98409 | fwp-inc.com

© First Western Properties, Inc. DISCLAIMER: The above information has been secured from sources believed to be reliable, however, no representations are made to its accuracy. Prospective tenants or buyers should consult their professional advisors and conduct their own independent investigation. Properties are subject to change in price and/or availability without notice.