

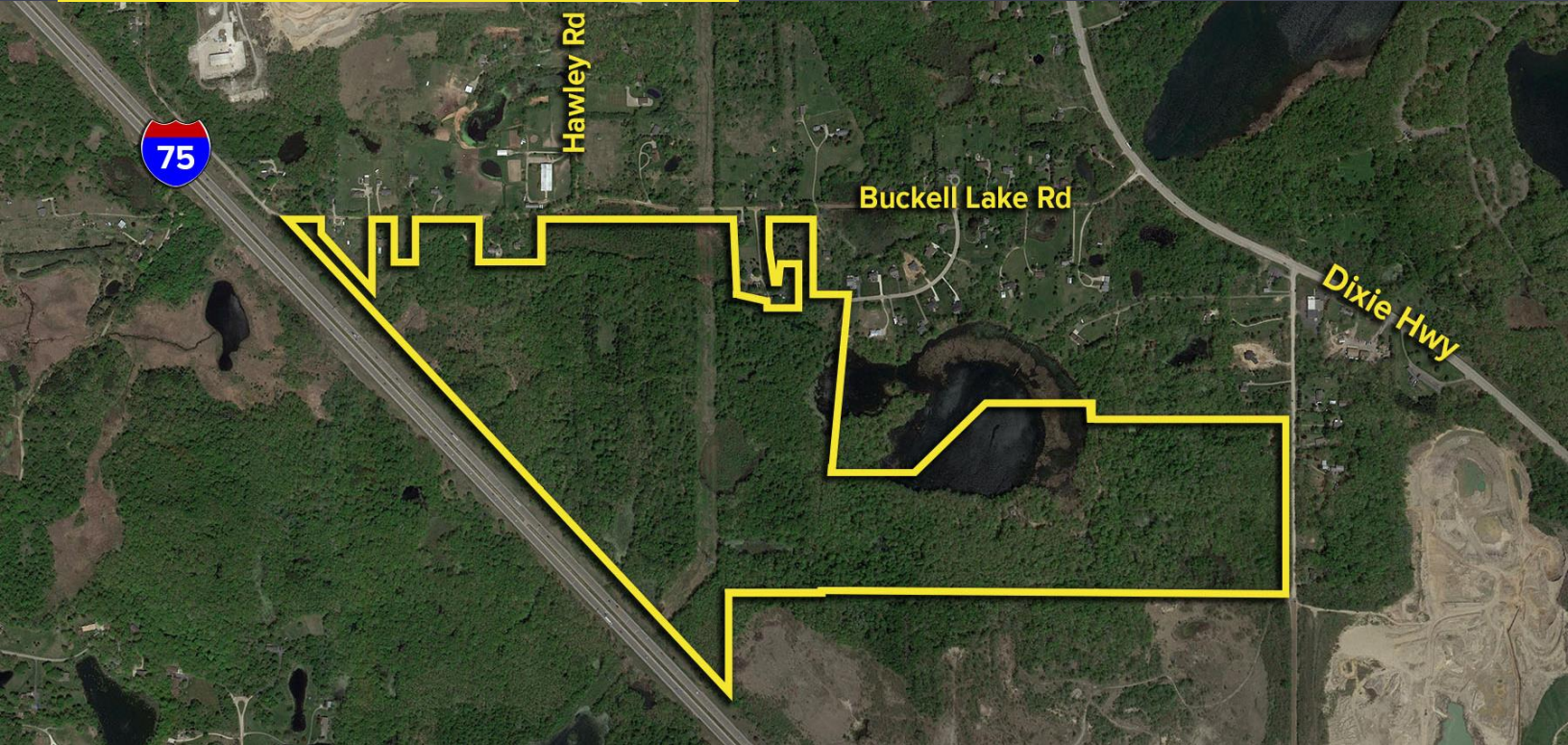
BUCKELL LAKE ROAD DAVISBURG, MICHIGAN

VACANT LAND FOR SALE
235.62 Acres Available



**SIGNATURE
ASSOCIATES**
KNOW SIGNATURE | KNOW RESULTS

PRICE REDUCED!



PROPERTY FEATURES

- 235.62 acres available
- Possible rezoning for hospital, college, auto research, parts supply, or office
- Currently zoned Residential
- Extensive frontage on Buckell Lake
- Access from Tindall Road and Buckell Lake Road
- Excellent I-75 frontage with exits at Holly Road and Grange Hall Road
- Sale price: \$13,500,000 (\$57,295.65/acre)



For more information, please contact:

GARY STEPHENS
(248) 948 0104
gstephens@signatureassociates.com

STEVE GORDON
(248) 948 0101
sgordon@signatureassociates.com

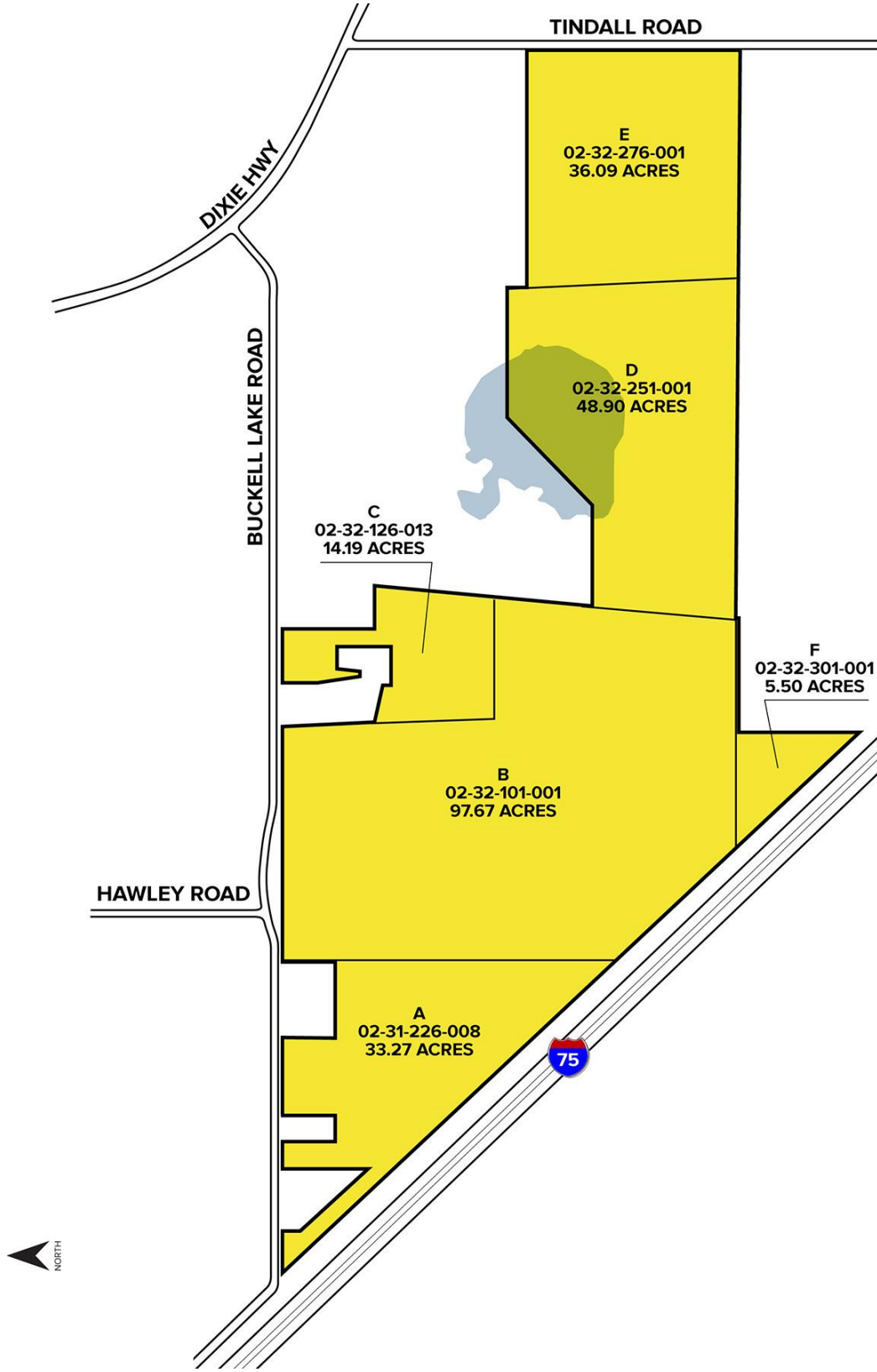
SIGNATURE ASSOCIATES
One Towne Square, Suite 1200
Southfield, MI 48076
www.signatureassociates.com

Buckell Lake Road – Davisburg, Michigan

Land For Sale

235.62
Acres
AVAILABLE

Site Plan



For more information, please contact:

GARY STEPHENS

(248) 948 0104

gstephens@signatureassociates.com

STEVE GORDON

(248) 948 0101

sgordon@signatureassociates.com

SIGNATURE ASSOCIATES

One Towne Square, Suite 1200

Southfield, MI 48076

www.signatureassociates.com