

465 WEST BROADWAY

BETWEEN HOUSTON & PRINCE STREETS

**Newmark Grubb
Knight Frank**
Retail

www.ngkf.com/retail

For further information, please contact our exclusive agents:

Matthew S. Krell
Adam Weinblatt

Senior Managing Director
Associate Director

212.372.2254
212.372.2103

mkrell@ngkf.com
aweinblatt@ngkf.com



465 WEST BROADWAY

BETWEEN HOUSTON & PRINCE STREETS

• STREET MAP •

SITE DETAILS

- GROUND LEVEL: APPROXIMATELY 3,000 SF
- LOWER LEVEL: APPROXIMATELY 1,500 SF
- FRONTAGE: APPROXIMATELY 27' ON W BROADWAY
- CEILINGS: APPROXIMATELY 12'
- TERM: LONG OR SHORT
- POSSESSION: IMMEDIATE
- ASKING RENT: UPON REQUEST

COMMENTS

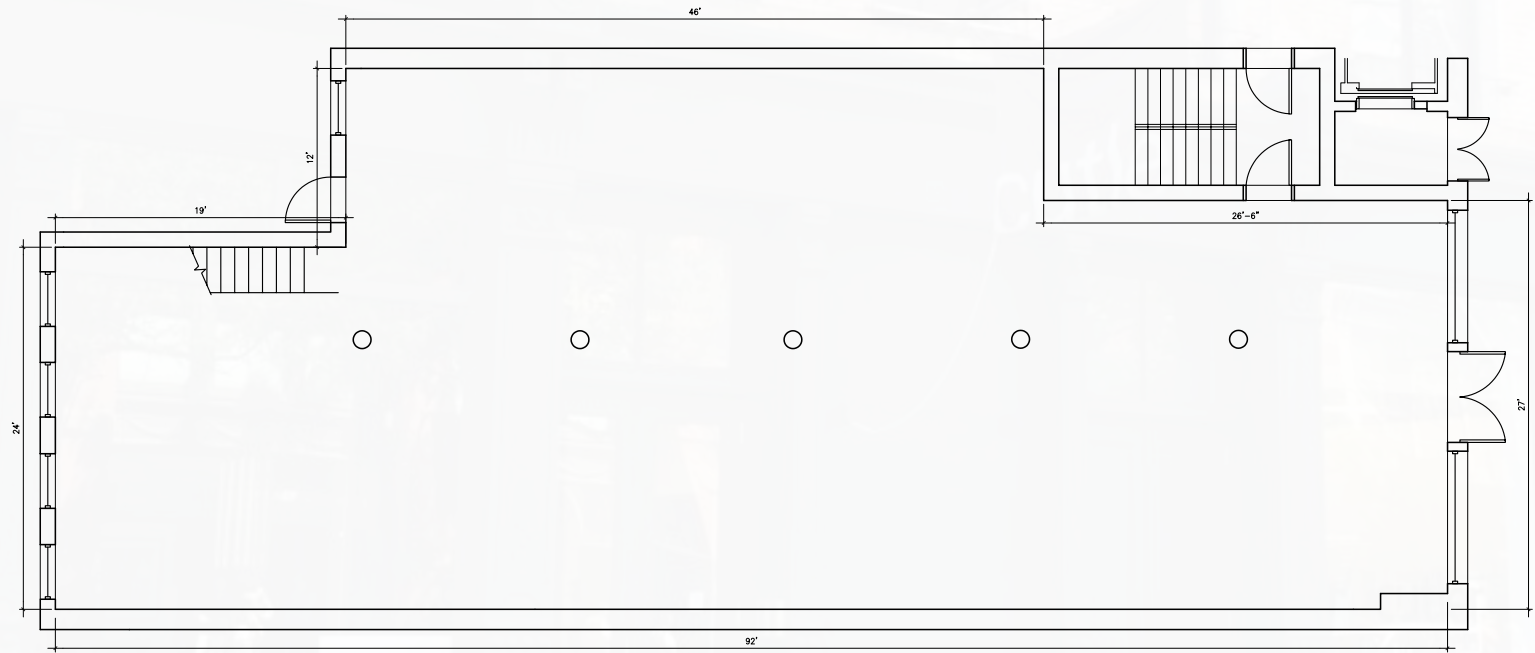
- BEAUTIFULLY BUILT OUT SOHO AVAILABILITY IN MOVE IN CONDITION.
- VIBRANT NATURAL LIGHT THROUGHOUT THE GROUND AND SELLING LOWER LEVEL.
- MAXIMIZED VISIBILITY WITH SLEEK STOREFRONT AND FLAGPOLE BRANDING.
- LIVELY MIX OF LOCAL, REGIONAL AND INTERNATIONAL RETAILERS IMMEDIATELY SURROUNDING THE SPACE.

<p>HOUSTON STREET</p>	<p>WEST BROADWAY</p>
<p>PRINCE STREET</p>	<p>WEST BROADWAY</p>
<p>SPRING STREET</p>	<p>WEST BROADWAY</p>

AREA RETAILERS



FLOOR PLAN



NOTE: ALL DIMENSIONS ARE APPROXIMATE

**Newmark Grubb
Knight Frank**
Retail

www.ngkf.com/retail

For further information, please contact our exclusive agents:

Matthew S. Krell
Adam Weinblatt

Senior Managing Director
Associate Director

212.372.2254
212.372.2103

mkrell@ngkf.com
aweinblatt@ngkf.com

