

For Sale/Lease  
**15,551 SF**

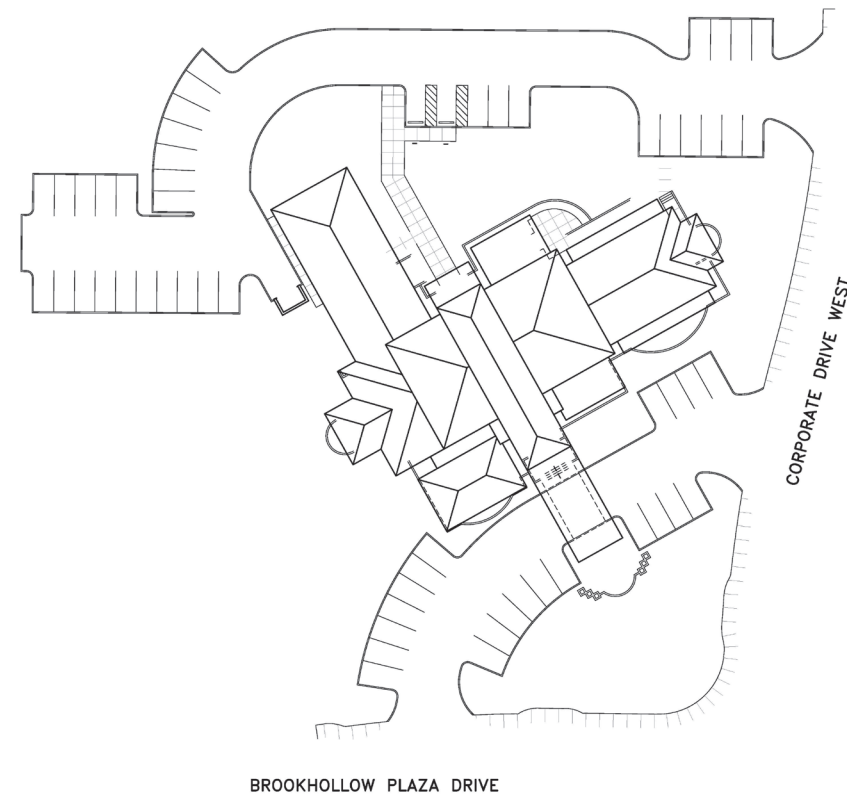


## Delta Delta Delta National Headquarters 2331 Brookhollow Plaza Drive

Arlington, Texas 76006

### Property Features

- Nicely Finished Out Two-Story Office Building
- Excellent Curb Appeal on a Corner Site
- Full Kitchen/Breakroom/Coffee Shop
- Elevator
- 3.73/1,000 Parking (58 Spaces)
- Partially Furnished
- Large Monument Sign
- Arlington Entertainment District (Hotels, Restaurants, AT&T Stadium, Texas Live!/Globe Life Park)
- Centrally Located in the Dallas/Fort Worth Metroplex
- 15 Miles to Downtown Fort Worth
- 16 Miles to Downtown Dallas
- 8 Miles to DFW International Airport
- 19 Miles to Dallas Love Field
- 9 Miles to Arlington Municipal Airport



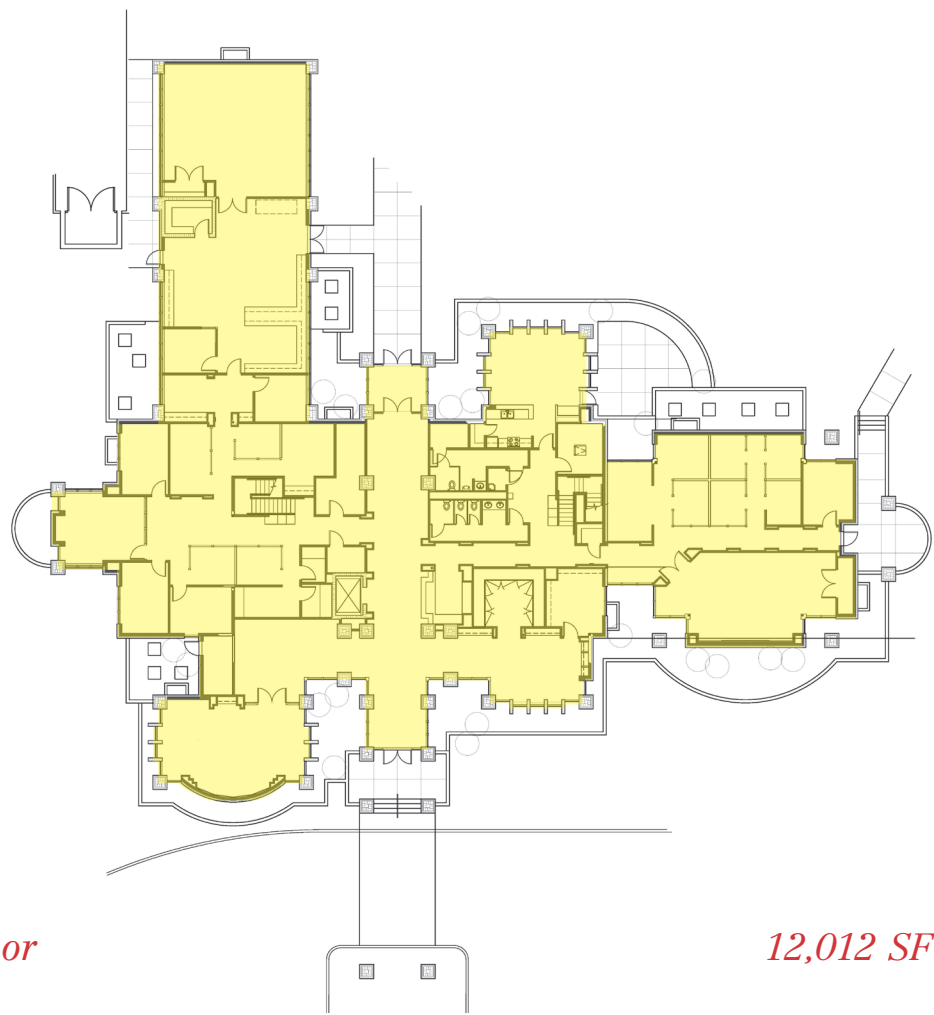
THE INFORMATION CONTAINED HEREIN HAS BEEN GIVEN TO US BY THE OWNER OF THE PROPERTY OR OTHER SOURCES WE DEEM RELIABLE. WE HAVE NO REASON TO DOUBT ITS ACCURACY, BUT WE DO NOT GUARANTEE IT. ALL INFORMATION SHOULD BE VERIFIED PRIOR TO PURCHASE OR LEASE.

4851 LBJ Freeway 10<sup>th</sup> Floor  
Dallas TX 75244  
214 256 7100  
[nairl.com](http://nairl.com)

**Michael Stanzel, SIOR**  
214 256 7122  
mstanzel@robertlynn.com

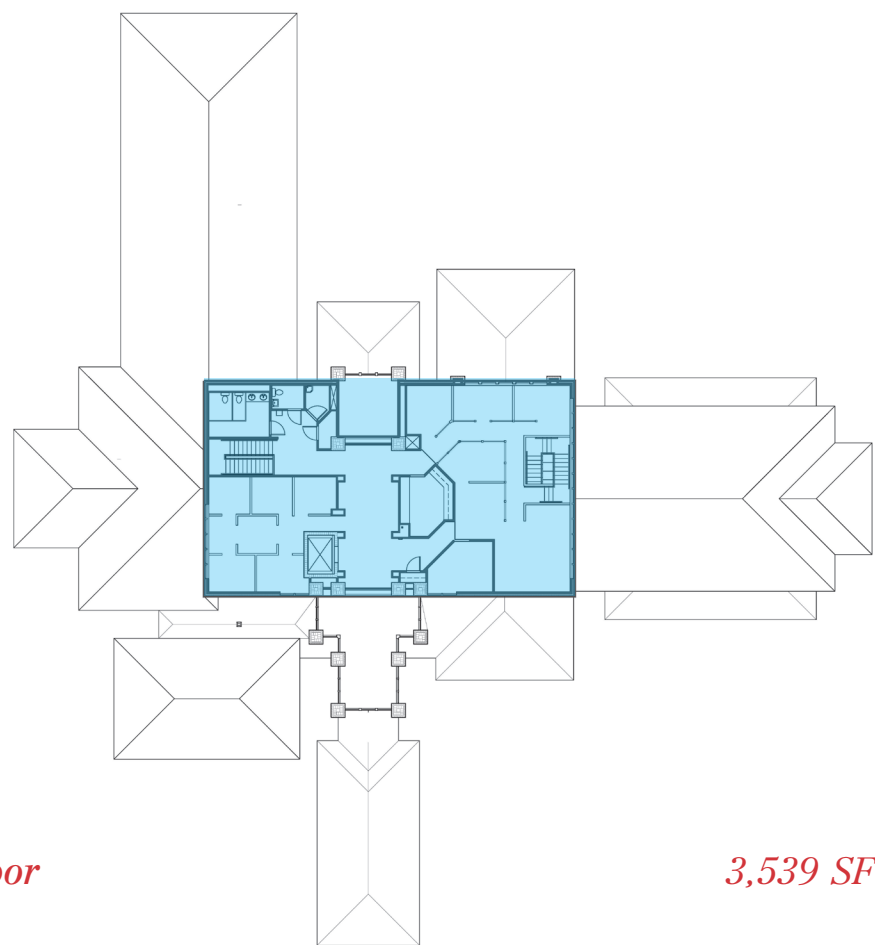
**Logan May**  
817 872 3909  
lmay@robertlynn.com





*First Floor*

*12,012 SF*



*Second Floor*

*3,539 SF*



For Sale/Lease  
**15,551 SF**

