



9 Mile Point Road

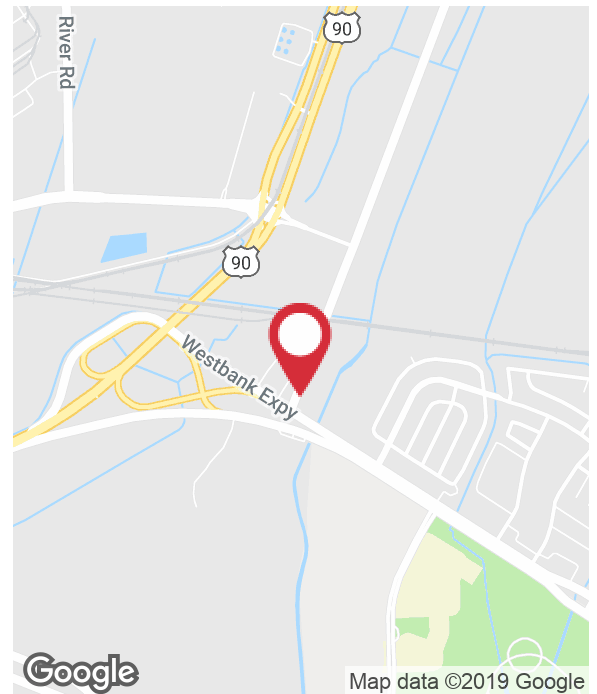
Westwego, Louisiana 70094

Property Highlights

- ±2.23 acre lot on the corner of 9 Mile Point Road and Westbank Expressway
- 1,000' of frontage on 9 Mile Point Road
- OW1 Zoning (Office/Warehouse District)
- Near Claiborne Gardens Subdivision
- Approximately 12 miles from Downtown New Orleans and 10 miles from Louis Armstrong New Orleans International Airport

Sale Price

\$745,000



For more information

James Barse, CCIM, SIOR

O: 504 439 9376 | C: 504 340 9339
jbarse@latterblum.com

Eli Gunesebakan

O: 504 569 9486 | C: 504 401 4900
elig@latterblum.com

CALL OR EMAIL FOR MORE INFORMATION

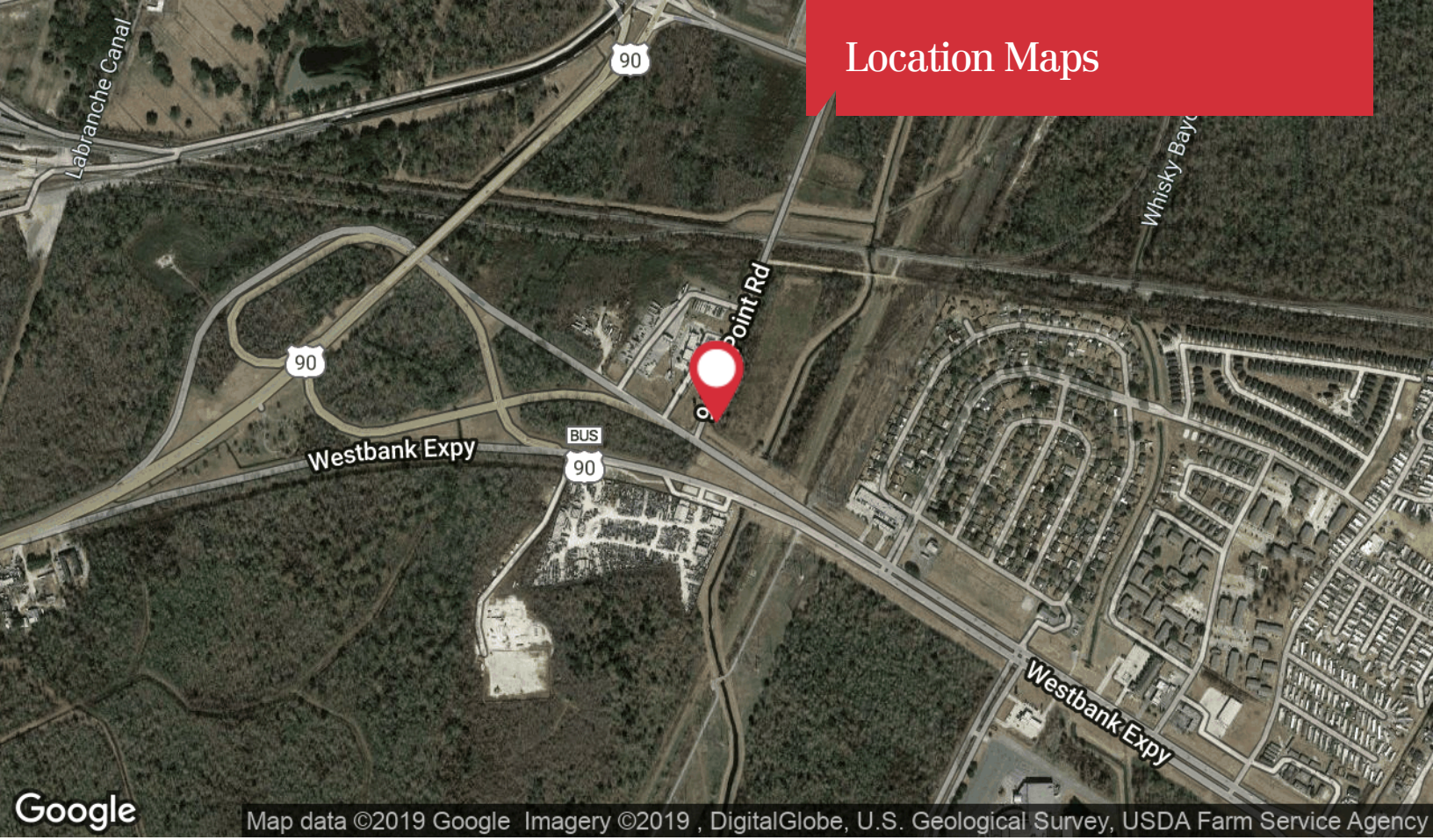
NO WARRANTY OR REPRESENTATION, EXPRESS OR IMPLIED, IS MADE AS TO THE ACCURACY OF THE INFORMATION CONTAINED HEREIN, AND THE SAME IS SUBMITTED SUBJECT TO ERRORS, OMISSIONS, CHANGE OF PRICE, RENTAL OR OTHER CONDITIONS, PRIOR SALE, LEASE OR FINANCING, OR WITHDRAWAL WITHOUT NOTICE, AND OF ANY SPECIAL LISTING CONDITIONS IMPOSED BY OUR PRINCIPALS NO WARRANTIES OR REPRESENTATIONS ARE MADE AS TO THE CONDITION OF THE PROPERTY OR ANY HAZARDS CONTAINED THEREIN ARE ANY TO BE IMPLIED. LICENSED IN LOUISIANA.

430 Notre Dame Street
New Orleans, LA 70130
504 525 1311 tel
latterblum.com

Additional Photos

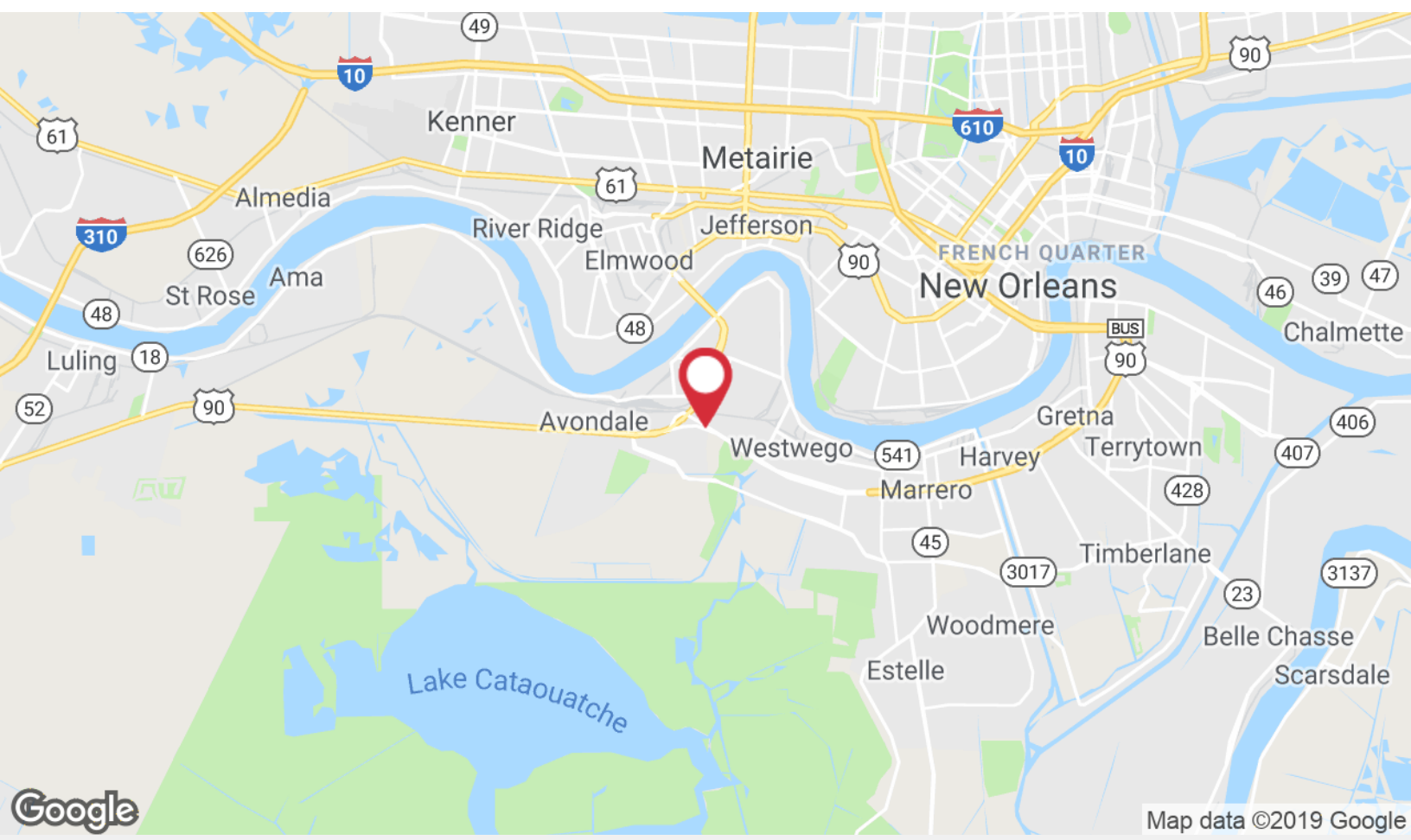


Location Maps



Google

Map data ©2019 Google Imagery ©2019 , DigitalGlobe, U.S. Geological Survey, USDA Farm Service Agency



Google

Map data ©2019 Google