

FOR LEASE

# WORLDS FAIR CORPORATE CENTER

22

WORLDS FAIR DRIVE | UNITS E & F  
Somerset, NJ



## SPECIFICATIONS

Total SF Available:	±10,000 SF
Office SF:	± 5,730 SF
Warehouse SF:	±4,270 SF
Year built:	1983
Ceiling height:	18'
Loading:	2 tailboard doors
Power:	400 amps
Sprinkler:	Wet



## CONTACT US

### ROBERT PINE

Vice President  
+1 732 509 2830  
robert.pine@cbre.com

### DAVID GHERIANI

Vice President  
+1 732 509 8942  
david.gheriani@cbre.com

### CHRIS GRIFFITH

Associate  
+1 732 509 2836  
chris.griffith@cbre.com

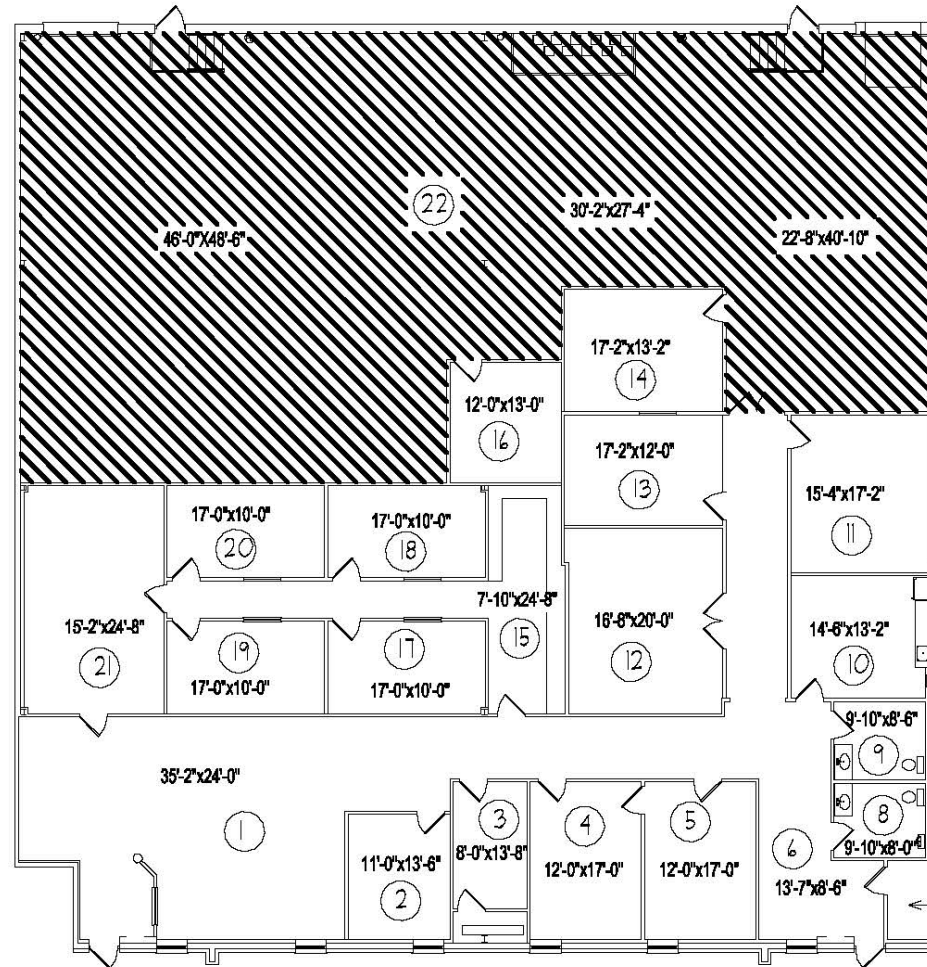
[www.cbre.us](http://www.cbre.us)

**CBRE**

**FIRST**  
INDUSTRIAL  
REALTY TRUST

**FLOOR PLAN**

- + Units E & F: ±10,000 SF available
- + Office: ±5,730 SF
- + Warehouse: ±4,270 SF



**Key - Total Rentable Space = 10,000 sq. ft.**

- = Office Area - (5,730 Sq. Ft.)
- = Warehouse Area - (4,270 Sq. Ft.)

**COMMENTS**

- + 1 per 1,000 car parking
- + T-5 lighting
- + Occupancy: January 1<sup>st</sup>, 2020
- + Access to I-287, Route 27, New Jersey Turnpike and the Garden State Parkway

© 2019 CBRE, Inc. All rights reserved. This information has been obtained from sources believed reliable, but has not been verified for accuracy or completeness. You should conduct a careful, independent investigation of the property and verify all information. Any reliance on this information is solely at your own risk. CBRE and the CBRE logo are service marks of CBRE, Inc. All other marks displayed on this document are the property of their respective owners. Photos herein are the property of their respective owners. Use of these images without the express written consent of the owner is prohibited.