

# 1257 MYRTLE AVENUE

BUSHWICK, BROOKLYN



RETAIL SPACE  
FOR LEASE

# BUSHWICK BROOKLYN

# 1257 MYRTLE AVENUE

## SPACE HIGHLIGHTS

### LOCATION

Between Myrtle and Willoughby Avenue

### SPACE

1,500 SF

### CEILING HEIGHT

12 FT

### FRONTAGE

41 FT

### DIMENSIONS

51 FT x 57 FT

### ZONING

R6

### OCCUPANCY

Immediate

### ASKING RENT

Upon Request

## HIGHLIGHTS

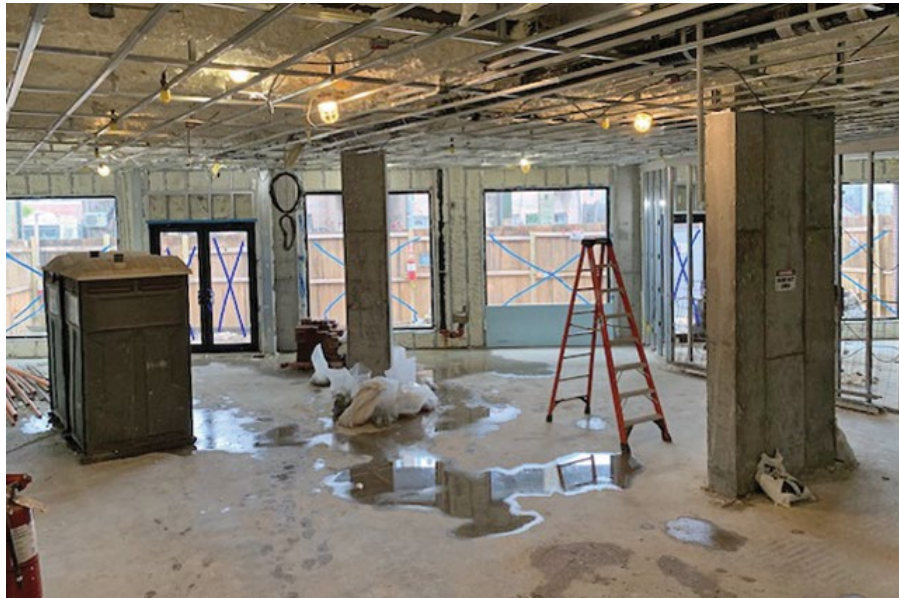
- Newly Developed Building.
- 1 min walk to Central Avenue M Train stop.
- 8 min walk to Myrtle/Broadway M Train stop.
- Additional 800 SF of basement space.
- Great location with great foot traffic.



# BUSHWICK BROOKLYN

# 1257 MYRTLE AVENUE

## SPACE DEVELOPMENT



**NEIGHBORHOOD DEMOGRAPHICS**



**184,335**

POPULATION  
WITHIN 1-MILE  
RADIUS

---



**35 Years**

AVERAGE  
POPULATION  
AGE

---



**8.67%**

POPULATION  
GROWTH  
SINCE 2010

---



**\$65,171**

AVERAGE HHI  
WITHIN 1-MILE  
RADIUS

---



**4,300**

TOTAL BUSINESSES  
WITHIN 1-MILE  
RADIUS

---



**\$1.2 bn**

ANNUAL SPENDING  
WITHIN 1-MILE  
RADIUS

---

# BUSHWICK BROOKLYN

# 1257 MYRTLE AVENUE

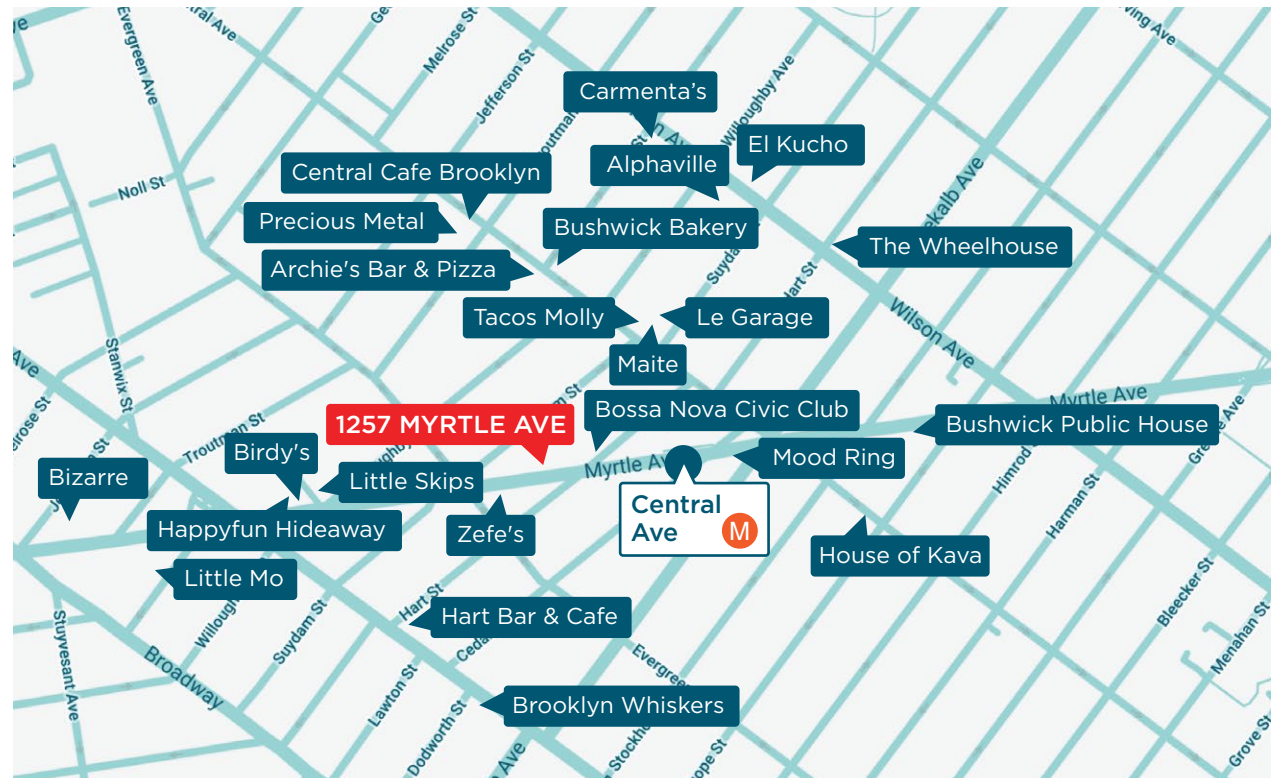
## NEIGHBORHOOD & TRANSPORTATION

### NEIGHBORHOOD TENANTS

- Bossa Nova Civic Club
- Zefe's
- Little Skips
- Happyfun Hideaway
- Le Garage
- Archie's Bar & Pizza
- Precious Metal
- Little Mo
- Bizarre
- Hart Bar
- Bushwick Public House
- Bushwick Bakery
- Brooklyn Whiskers
- House of Kava
- Mood Ring
- The Wheelhouse
- Birdy's
- Maite
- El Kucho
- Alphaville
- Carmenta's
- Tacos Molly
- Central Cafe Brooklyn
- Central Ave M
- Brooklyn Whiskers

### TRANSPORTATION

- 5 Min Walk at Central Avenue (0.2 mi)
- 9 Min Walk at Myrtle Avenue (0.4 mi)



**BUSHWICK BROOKLYN**

**1257 MYRTLE AVENUE**

**CONTACT**

