

**FOR LEASE**

# Downtown Portland Storage Building

320 NW Hoyt Street, Portland, OR



## FEATURES

Close-in storage building located in downtown Portland

30,000 SF total on three (3) floors, with 10,000 SF floorplates

12-14' ceiling heights on each floor

Fully functional freight elevator serving 2nd and 3rd floors

Zoning: CX (Central Commercial, City of Portland)

Approximately 8,146 SF of surplus land for parking. Surplus land is fully secured with fence and gate in place

Excellent location in downtown Portland with access to all major areas of the city

Owner will be flexible on term

Rental Rate: \$0.50/SF, NNN

Exterior dock high loading

## CONTACT

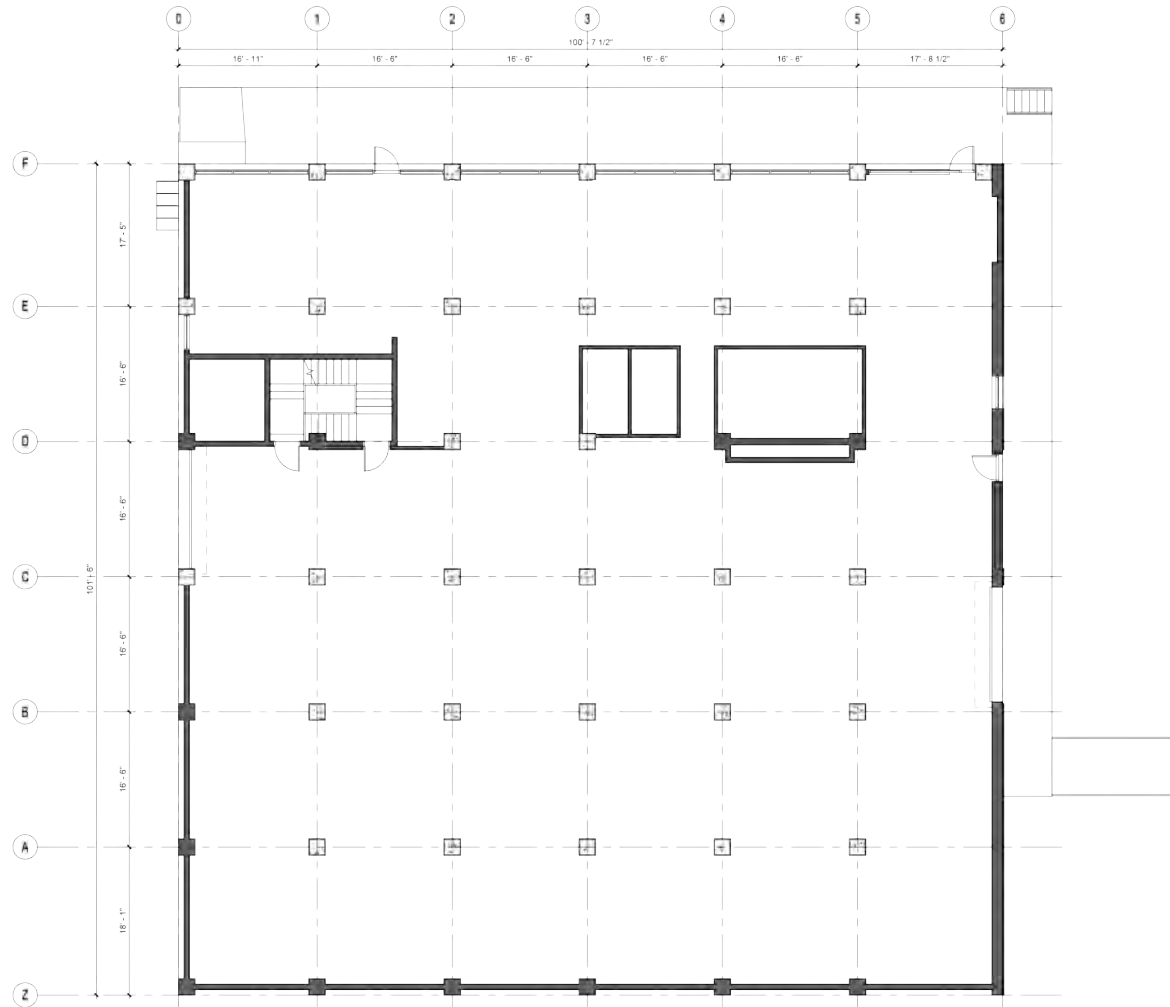
**Scott Murphy**  
Senior Vice President, Partner  
503.221.2287  
smurphy@kiddermathews.com



# FOR LEASE

# 320 NW Hoyt Street

## SITE PLAN



## CONTACT

**Scott Murphy**  
Senior Vice President, Partner  
503.221.2287  
smurphy@kiddermathews.com



# FOR LEASE

# 320 NW Hoyt Street

## BUILDING AERIALS



## CONTACT

**Scott Murphy**  
Senior Vice President, Partner  
503.221.2287  
smurphy@kiddermathews.com

