

FOR LEASE



1900 - 7TH ST. NW
NEW BRIGHTON • MN 55112

- UP TO 1,221 SF AVAILABLE
- \$18.00 GROSS RENT
- LOCATED RIGHT OFF OF HWY 694 AND SILVER LAKE ROAD
- PERFECT FOR SMALL OFFICE GROUP OR CLASSROOM
- AREA AMENITIES INCLUDE: COFFEE, GAS STATIONS, RETAIL, MCDONALDS, GROCERY, AND MANY MORE

CONTACT:

WWW.ESSENCEREALESTATE.COM

JEFF NORDNESS
jeff@essencerealestate.com
651-341-5044

1900 - 7TH STREET

NEW BRIGHTON • MN 55112

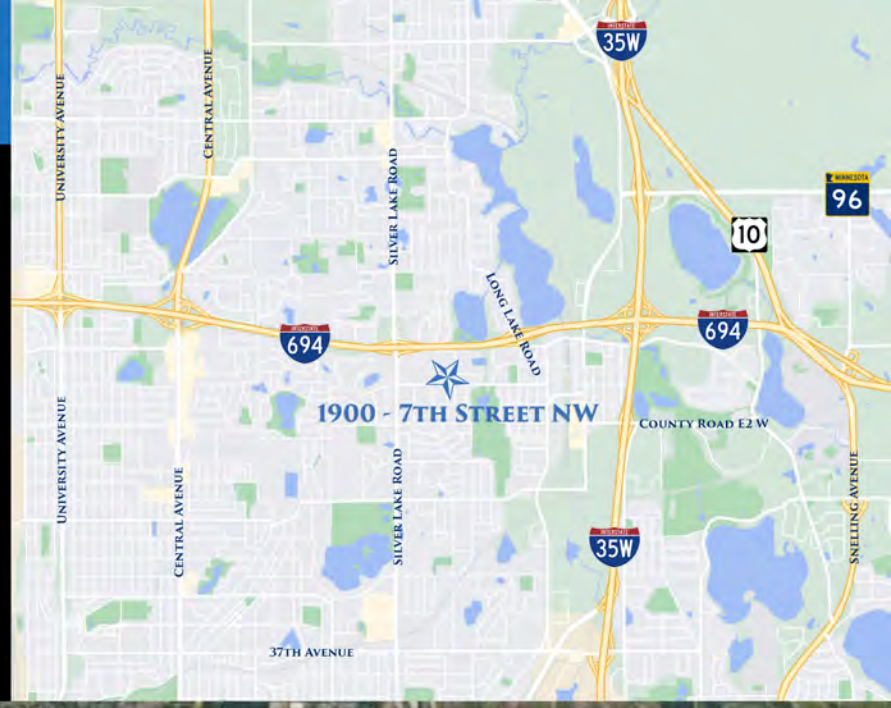
BUILDING DETAILS:

OFFICE GROSS RENT: \$18.00 SF

SPACE AVAILABLE:

| | |
|-----------|--------|
| SUITE 114 | 150 SF |
| SUITE 115 | 378 SF |
| SUITE 116 | 693 SF |

APPROX. \$225 - \$1,039
A MONTH



GREAT SMALL SPACES IN NEW BRIGHTON CHURCH



ESSENCE
REAL ESTATE
SERVICES INC.

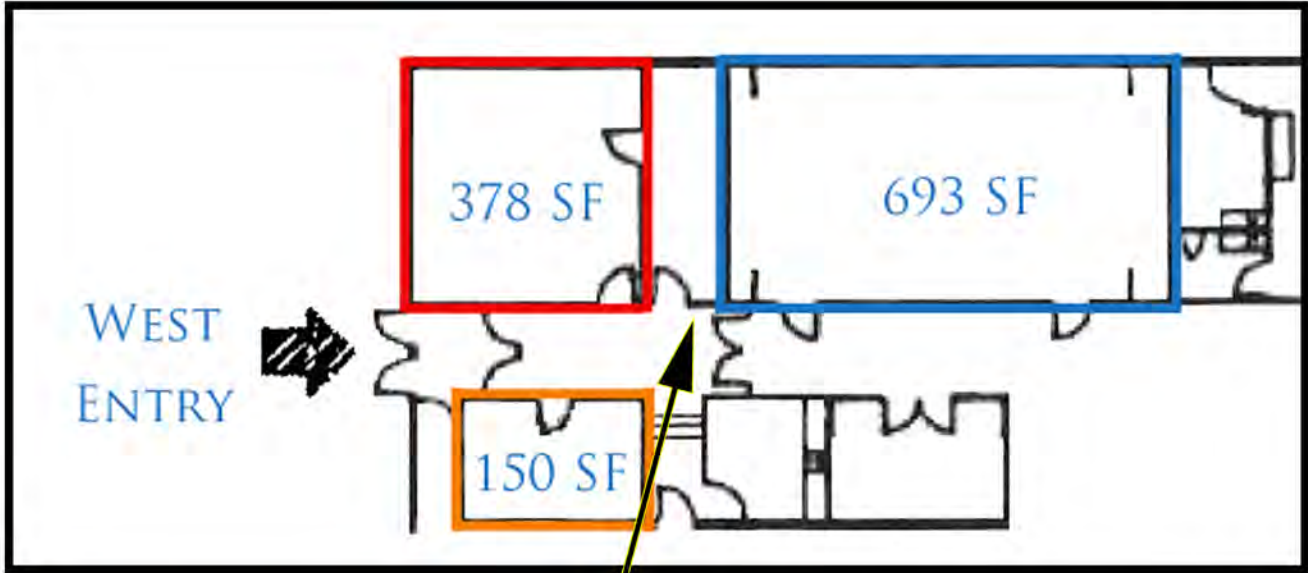
JEFF NORDNESS
651-341-5044
jeff@essencerealestate.com

COMMERCIAL REAL ESTATE SINCE 1990

OFFICE: 651-482-1871

1900 - 7TH STREET NW

NEW BRIGHTON • MN 55112



UP TO 1,221 SF AVAILABLE

APPROX.
\$225 - \$1,039
A MONTH

SMALL OFFICE
SPACES AVAILABLE
INSIDE A NEW
BRIGHTON
CHURCH



ERSI

ESSENCE
REAL ESTATE
SERVICES INC.

COMMERCIAL REAL ESTATE SINCE 1990

JEFF NORDNESS

651-341-5044

jeff@essencerealestate.com

OFFICE: 651-482-1871