

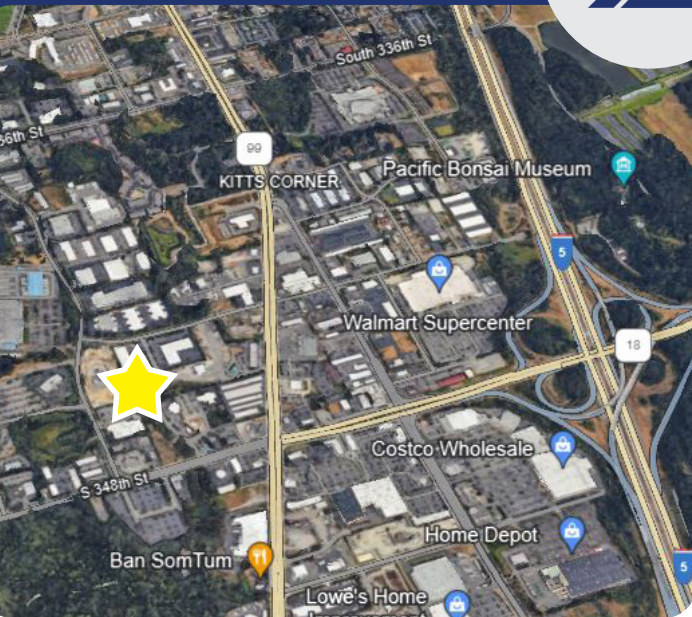
# ACR BUILDING

1017 S 344TH ST  
FEDERAL WAY, WA

18,543 SF OF  
INDUSTRIAL SPACE

FOR  
SUBLEASE

AVAILABLE  
NOW



## PROPERTY HIGHLIGHTS

- **SIZE: 18,543 SF TOTAL**
- **OFFICE: 660 SF**
- **LOADING: 3 DOCK HIGH (1 EDGE OF DOCK LEVELER), 2 GRADE LEVEL (DOUBLE WIDE)**
- **CEILING HEIGHT: 25' CLEAR HEIGHT**
- **FLEXIBLE TERM AVAILABLE, SUBLEASE TERM THROUGH 5/31/29**
- **EXCELLENT DISTRIBUTION SPACE**
- **GOOD TRUCK MANEUVERING**
- **EASY ACCESS TO I-5 VIA S 348TH ST**
- **HIGH VISIBILITY SIGNAGE**
- **CALL BROKER FOR RATES**

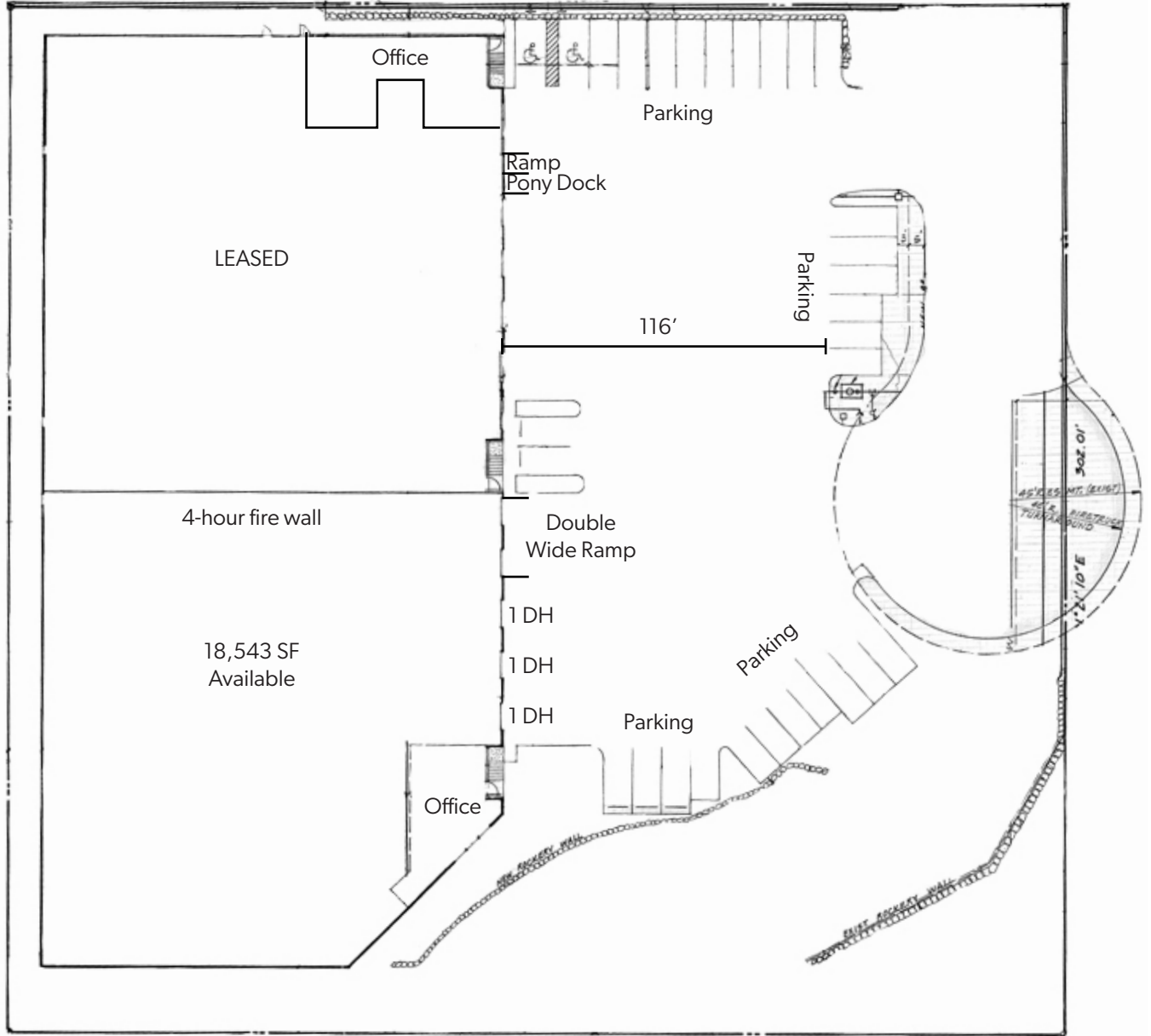


The information contained herein has been obtained from reliable sources, but is not guaranteed. A prospective buyer/tenant should verify each item relating to this property and all information contained herein.

**ARNE SVENDSEN**  
(206) 947-2885  
asvensen@andoverco.com

 **THE ANDOVER  
COMPANY, INC.**  
CORFAC INTERNATIONAL

# SITE MAP



The information contained herein has been obtained from reliable sources, but is not guaranteed. A prospective buyer/tenant should verify each item relating to this property and all information contained herein.