

OFFICE, MEDICAL, HOTEL SITE

WEST OF NWC COTTON LANE & ESTRELLA PARKWAY : GOODYEAR, ARIZONA

±2.96 ACRES



ESTRELLA
by Newland COMMUNITIES

DAVE HEADSTREAM

Land Services Group

+1 602 735 1971

dave.headstream@cbre.com

JASON HYAMS

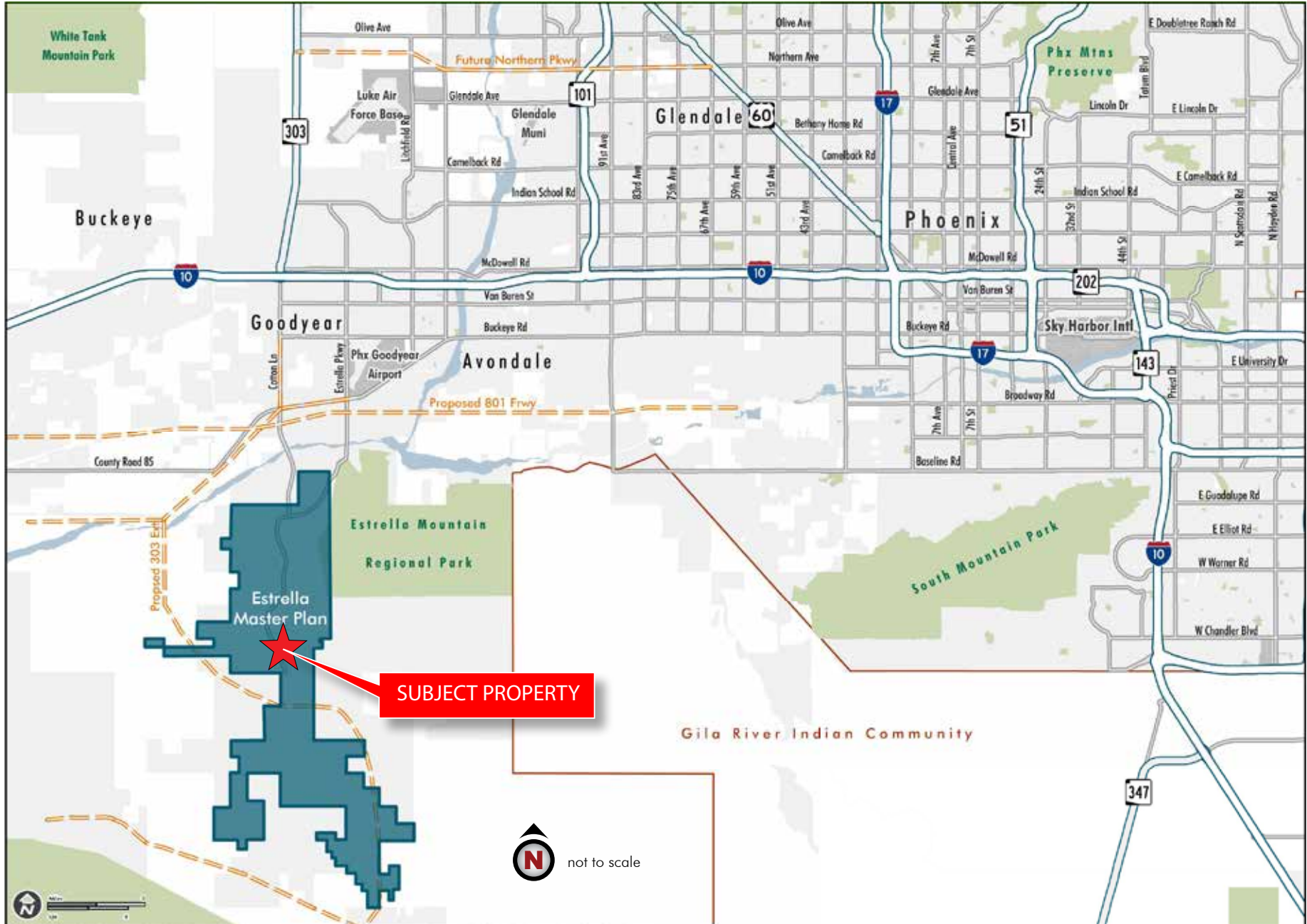
Land Services Group

+1 602 735 5595

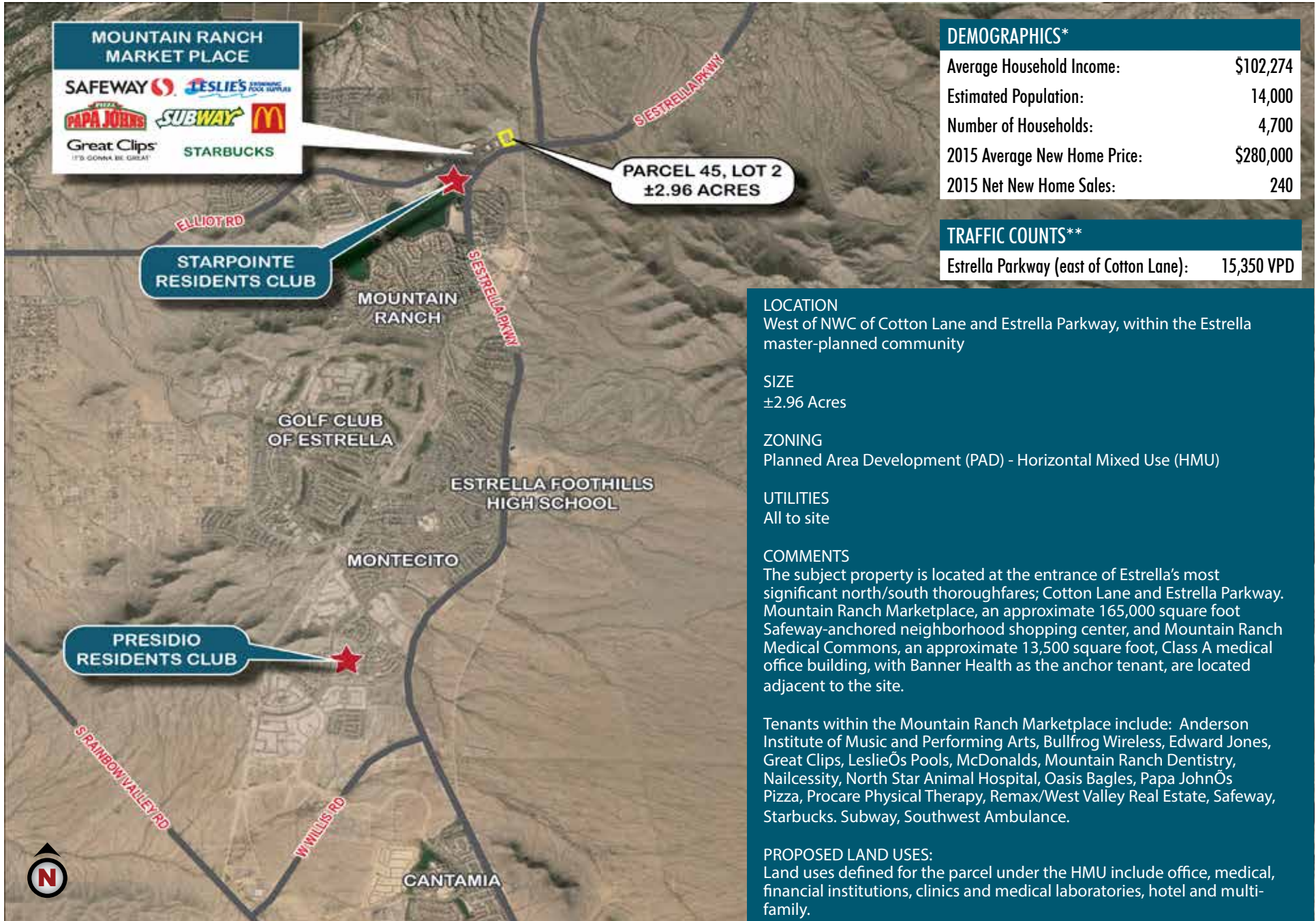
jason.hyams@cbre.com

CBRE

AREA MAP



AERIAL | HOTEL, OFFICE, MEDICAL



DEMOGRAPHICS*	
Average Household Income:	\$102,274
Estimated Population:	14,000
Number of Households:	4,700
2015 Average New Home Price:	\$280,000
2015 Net New Home Sales:	240

TRAFFIC COUNTS**	
Estrella Parkway (east of Cotton Lane):	15,350 VPD

LOCATION
West of NWC of Cotton Lane and Estrella Parkway, within the Estrella master-planned community

SIZE
±2.96 Acres

ZONING
Planned Area Development (PAD) - Horizontal Mixed Use (HMU)

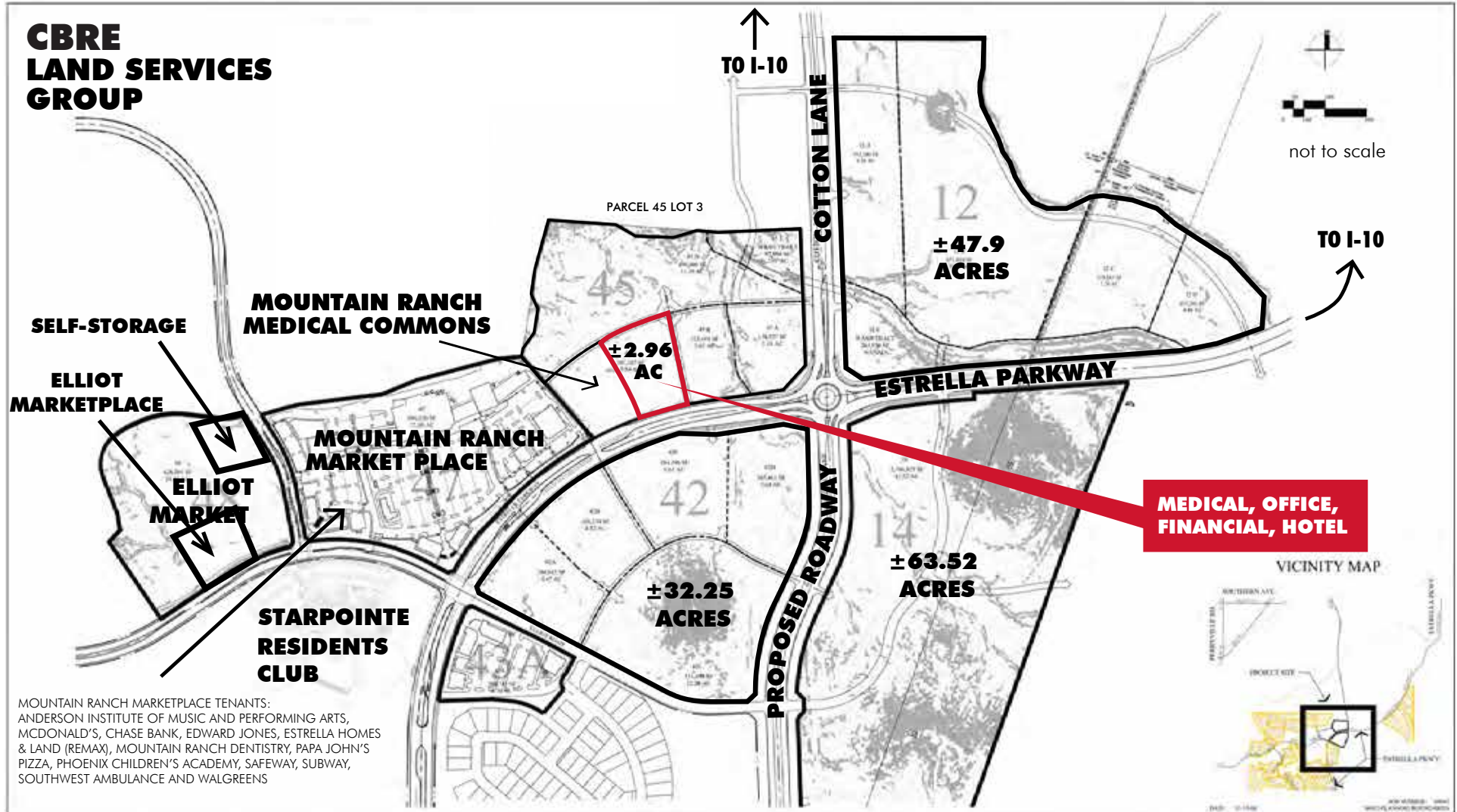
UTILITIES
All to site

COMMENTS
The subject property is located at the entrance of Estrella's most significant north/south thoroughfares; Cotton Lane and Estrella Parkway. Mountain Ranch Marketplace, an approximate 165,000 square foot Safeway-anchored neighborhood shopping center, and Mountain Ranch Medical Commons, an approximate 13,500 square foot, Class A medical office building, with Banner Health as the anchor tenant, are located adjacent to the site.

Tenants within the Mountain Ranch Marketplace include: Anderson Institute of Music and Performing Arts, Bullfrog Wireless, Edward Jones, Great Clips, Leslie's Pools, McDonalds, Mountain Ranch Dentistry, Nailcessity, North Star Animal Hospital, Oasis Bagles, Papa John's Pizza, Procare Physical Therapy, Remax/West Valley Real Estate, Safeway, Starbucks, Subway, Southwest Ambulance.

PROPOSED LAND USES:
Land uses defined for the parcel under the HMU include office, medical, financial institutions, clinics and medical laboratories, hotel and multi-family.

MEDICAL, OFFICE, FINANCIAL, HOTEL



AERIAL





ESTRELLA LIVING

DESCRIPTION - Surrounded by majestic mountains and wide-open desert vistas, Estrella offers young couples, families and active adults a resort-inspired lifestyle with a variety of world-class amenities. Estrella's three distinctive communities - Mountain Ranch, Montecito and CantaMia (55+) - feature remarkable living with rich architecture, diverse neighborhood streetscapes and inviting gathering places.

LOCATION - Estrella is located approximately 17 miles west of Downtown Phoenix in Goodyear, Arizona, which has been named as one of the five "Most Livable Cities in America. Estrella is committed to becoming the most desirable destination in the Sonoran Desert Valley. At full build-out, Estrella will offer 50,000 homes.

SCHOOLS - Estrella features two highly-rated K-8 elementary schools, both part of the Liberty Elementary School District. Estrella Foothills High School is part of the Buckeye Union High School District and was recently recognized by the Arizona Education Foundation as an A+ school.

ACTIVE HOME BUILDERS - Some of the Valley's most well-known homebuilders are building in Estrella including Shea Homes, Beazer Homes, KB Home, Gehan Homes, David Weekley Homes, William Ryan Homes, and AV Homes. There were 247 net new home sales at Estrella in 2015.

STARPOINTE RESIDENTS CLUB - The community features an impressive 24,400 square foot Residents Club inspired by seaside hotels and elegant resorts. The club features StarSplash Water Park that is host to two slides, a 25-meter heated lap pool, a state-of-the-art fitness center, cafe, youth club, meeting rooms and outdoor event spaces.

PRESIDIO RESIDENTS CLUB - The 18,500 square-foot Presidio, Estrella's second residents club, is under construction. It includes a gym, sports lounge, coffee - wine and beer bar, a demonstration kitchen and an outdoor pool. Presidio is expected to open in September 2016.

ESTRELLA YACHT CLUB AND NORTH AND SOUTH LAKES - Estrella boasts two private lakes, North Lake and South Lake, which combined total 72 acres. The Yacht Club offers residents complimentary use of a variety of non-motorized boats including paddle boats, canoes and sail boats. Both lakes are stocked with a selection of fresh water fish for catch-and-release fishing.

GOLF CLUB OF ESTRELLA - Award-winning par 72, 18-hole championship golf course.





RETAIL AND SHOPPING

West and adjacent to the site sits [MOUNTAIN RANCH MARKETPLACE](#), the first LEED (Leadership in Energy and Environmental Design) Gold certified shopping center in Arizona. Safeway is the first grocery store in the Estrella community. At full build-out, the shopping center will provide approximately 165,000 square feet of grocery, drug and retail space. The first phase contains approximately 109,000 square feet. Beyond Safeway, Estrella also has Walgreen's, Chase Bank, Oasis Bagels, Papa John's, Subway, FroGo, Verizon Wireless, Great Clips and much more. [ELLIOTT MARKET](#) is right across the street for gas, conveniences and pizza at Taste of Italy. A self-storage facility will be in operation in 2017. Adjacent to Mountain Ranch Marketplace sits [MOUNTAIN RANCH MEDICAL COMMONS](#) with an approximate 13,500 square foot building that is home to Banner Health. The state-of-the-art medical office facility offers primary-care services.



ESTRELLA™

by
Newland COMMUNITIES

DAVE HEADSTREAM

Land Services Group

+1 602 735 1971

dave.headstream@cbre.com

JASON HYAMS

Land Services Group

+1 602 735 5595

jason.hyams@cbre.com

CBRE

CBRE © 2016 All Rights Reserved. All information included in this proposal pertaining to CBRE—including but not limited to its operations, employees, technology and clients—are proprietary and confidential, and are supplied with the understanding that they will be held in confidence and not disclosed to third parties without the prior written consent of CBRE. This letter/proposal is intended solely as a preliminary expression of general intentions and is to be used for discussion purposes only. The parties intend that neither shall have any contractual obligations to the other with respect to the matters referred herein unless and until a definitive agreement has been fully executed and delivered by the parties. The parties agree that this letter/proposal is not intended to create any agreement or obligation by either party to negotiate a definitive lease/purchase and sale agreement and imposes no duty whatsoever on either party to continue negotiations, including without limitation any obligation to negotiate in good faith or in any way other than at arm's length. Prior to delivery of a definitive executed agreement, and without any liability to the other party, either party may (1) propose different terms from those summarized herein, (2) enter into negotiations with other parties and/or (3) unilaterally terminate all negotiations with the other party hereto. CBRE and the CBRE logo are service marks of CBRE, Inc. and/or its affiliated or related companies in the United States and other countries. All other marks displayed on this document are the property of their respective owners. JH9104_04/16