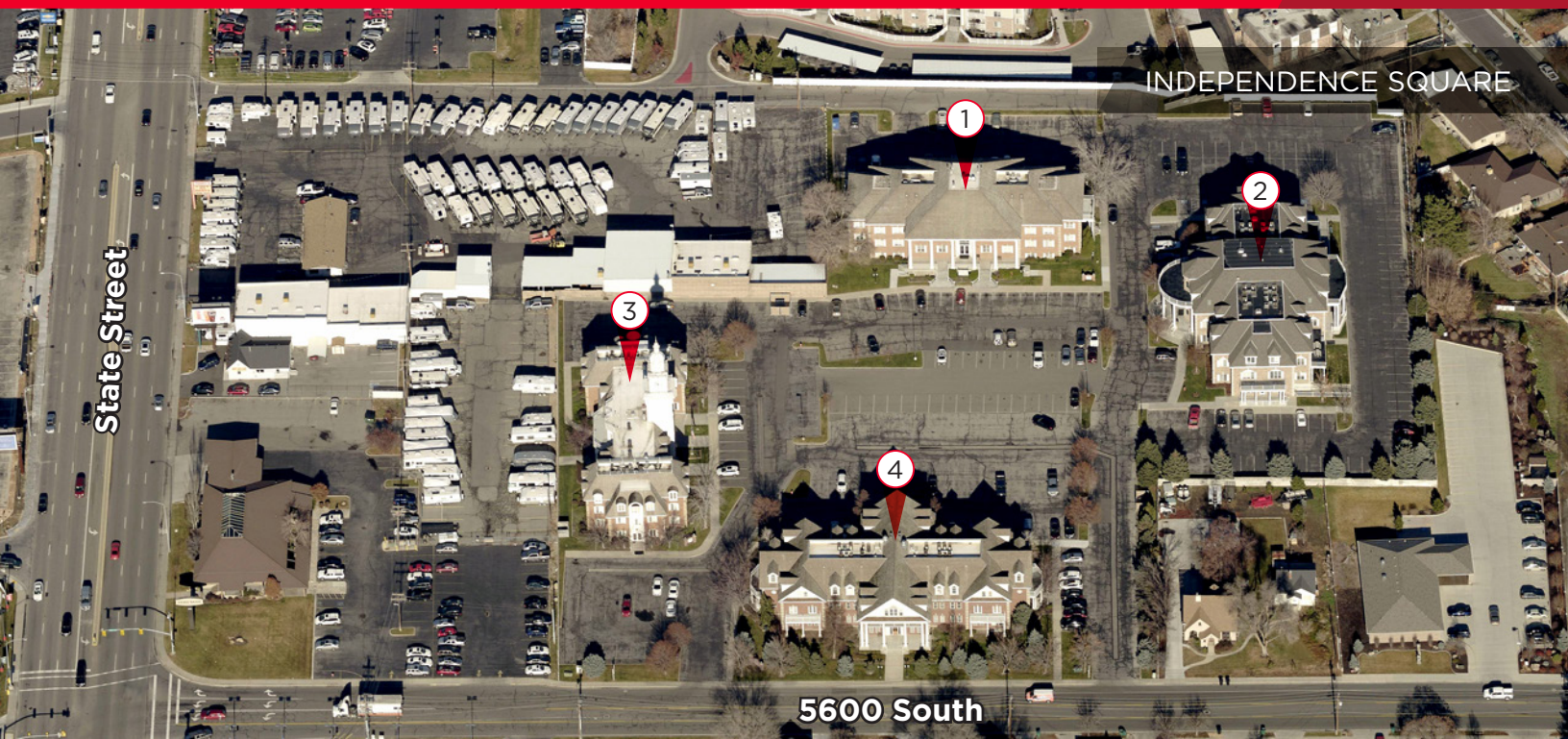




**CUSHMAN &
WAKEFIELD**

FOR LEASE

111, 141, 151, 181 East 5600 South
Murray, Utah



PROPERTY FEATURES

Four, 3-Story Office Buildings • 3.5/1,000 Parking Ratio
Convenient I-15 Access via 5300 South • Utopia Fiber Available

Justin Bailey

Director
+1 801 303 5493
justin.bailey@cushwake.com

Dana Baird, CCIM

Executive Director
+1 801 303 5526
dana.baird@cushwake.com

170 South Main Street Suite 1600
Salt Lake City, UT 84101
Main +1 801 322 2000
Fax +1 801 322 2040
cushmanwakefield.com



BUILDING FEATURES

- Asking Rate: \$11.00 - \$12.50, NNN
- 3.5/1,000 parking ratio
- Convenient I-15 access via 5300 South
- Newly renovated lobbies
- Suites with balcony available



INDEPENDENCE HALL 111 EAST

- Suites ranging from 298 RSF - 2,777 RSF



JEFFERSON MANSION 141 EAST

- Suites ranging from 1,137 RSF - 5,319 RSF



WASHINGTON SQUARE 151 EAST

- Suites ranging from 927 RSF - 9,208 RSF
- Full floor opportunity available



LIBERTY HALL 181 EAST

- Suites ranging from 2,436 RSF - 8,189 RSF



**CUSHMAN &
WAKEFIELD**

FOR LEASE

111, 141, 151, 181 East 5600 South
Murray, Utah





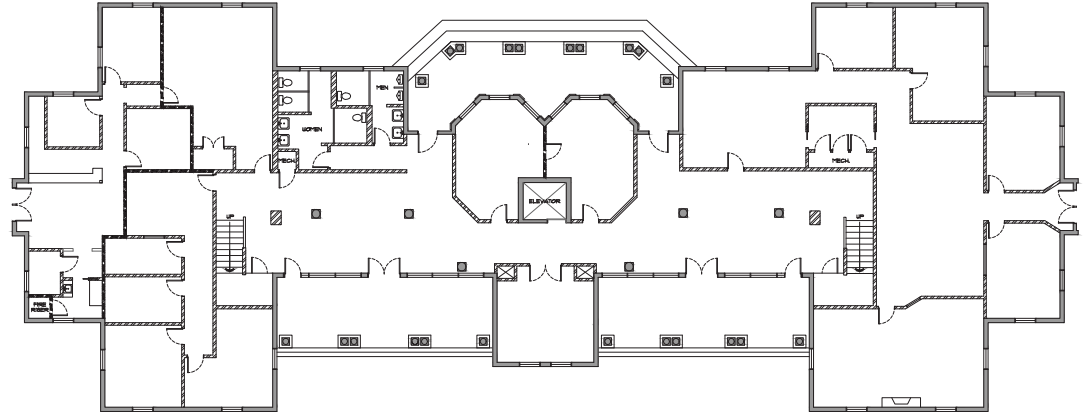
CUSHMAN &
WAKEFIELD

FOR LEASE

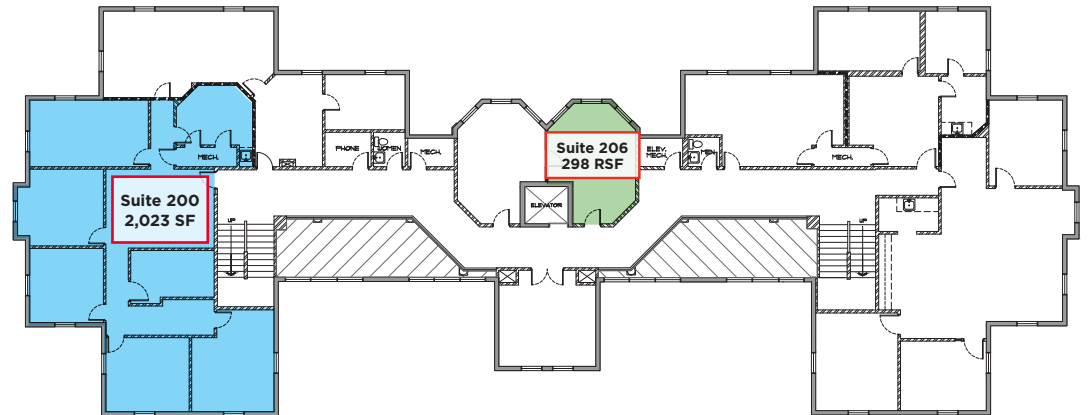
111, 141, 151, 181 East 5600 South
Murray, Utah

INDEPENDENCE HALL 111 EAST 5600 SOUTH

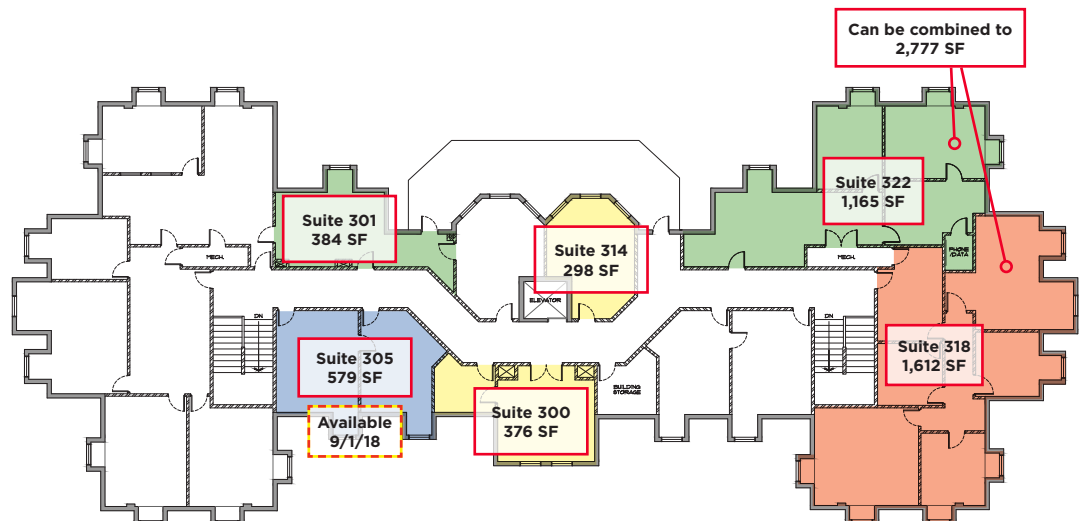
Floor 1



Floor 2



Floor 3





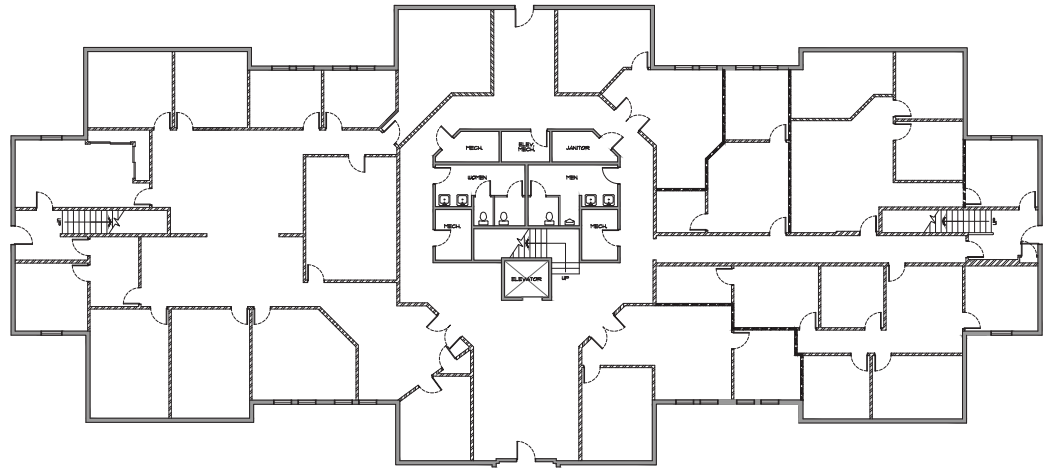
**CUSHMAN &
WAKEFIELD**

FOR LEASE

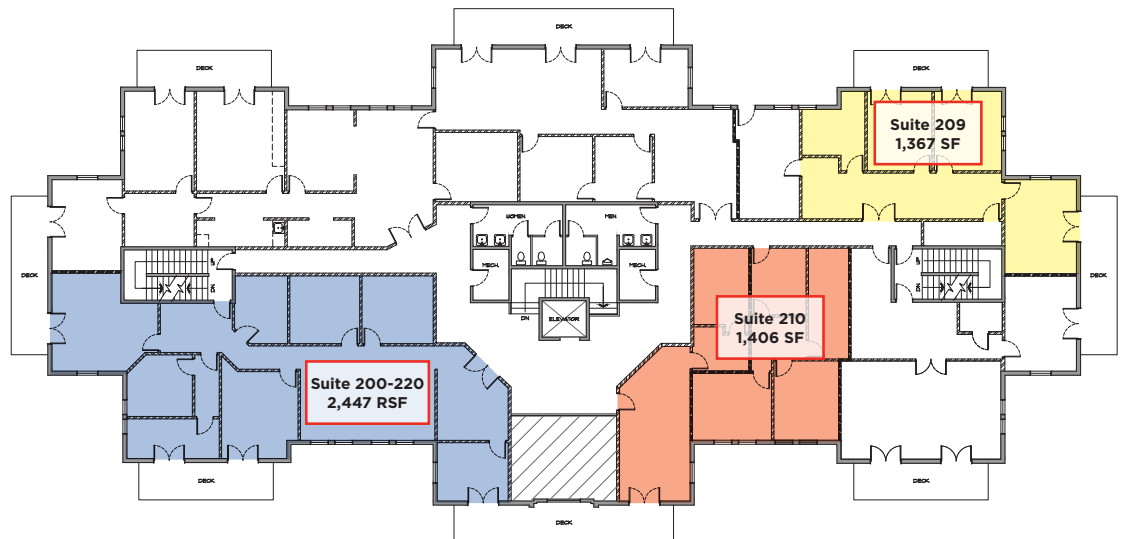
111, 141, 151, 181 East 5600 South
Murray, Utah

JEFFERSON MANSION 141 EAST 5600 SOUTH

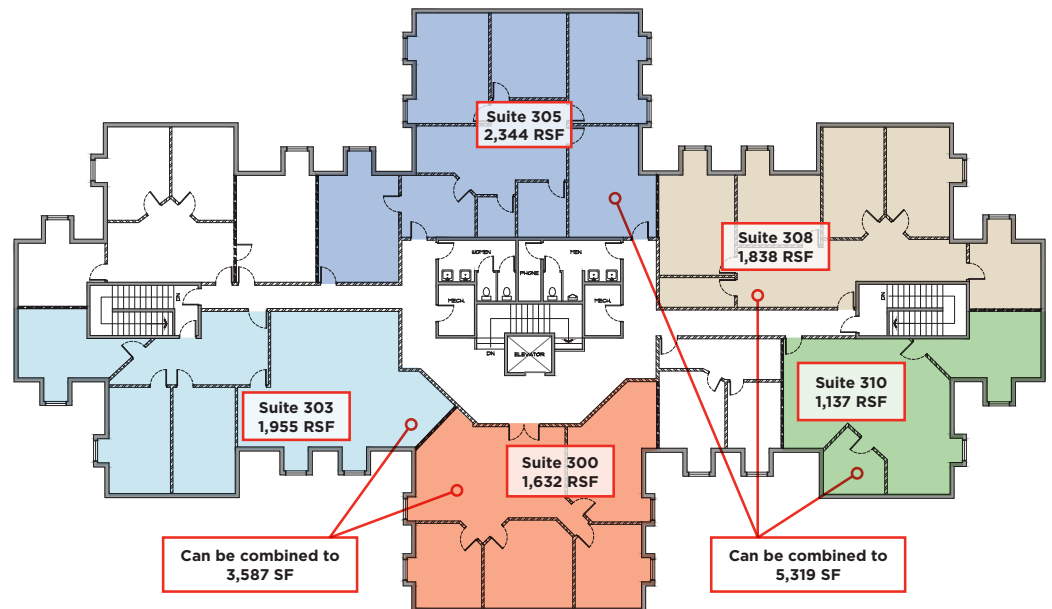
Floor 1



Floor 2



Floor 3



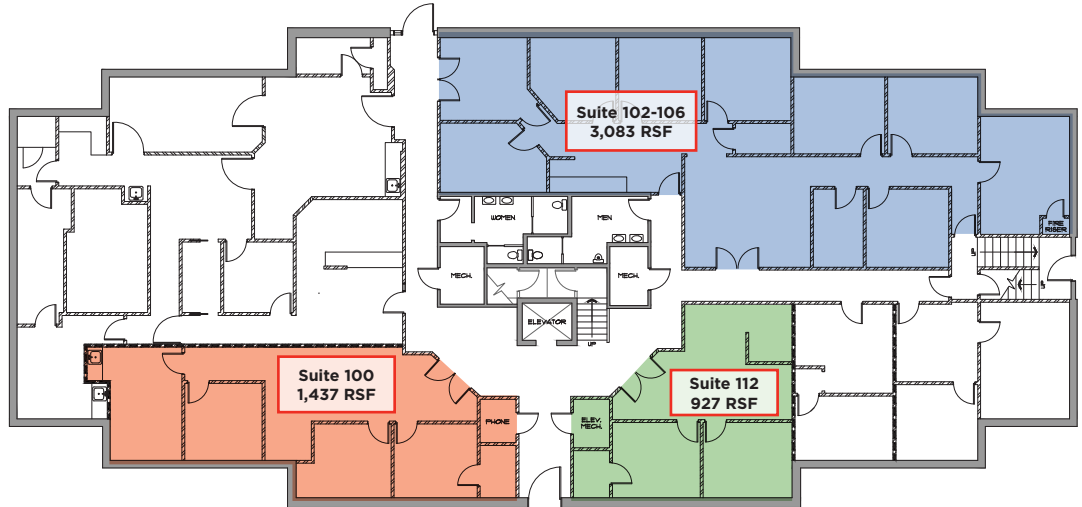


**CUSHMAN &
WAKEFIELD**

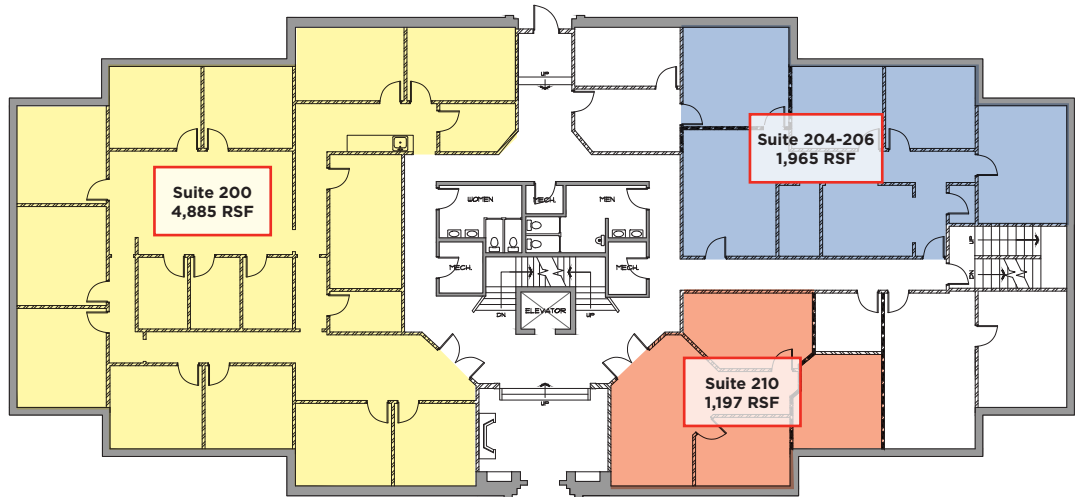
FOR LEASE

111, 141, 151, 181 East 5600 South
Murray, Utah

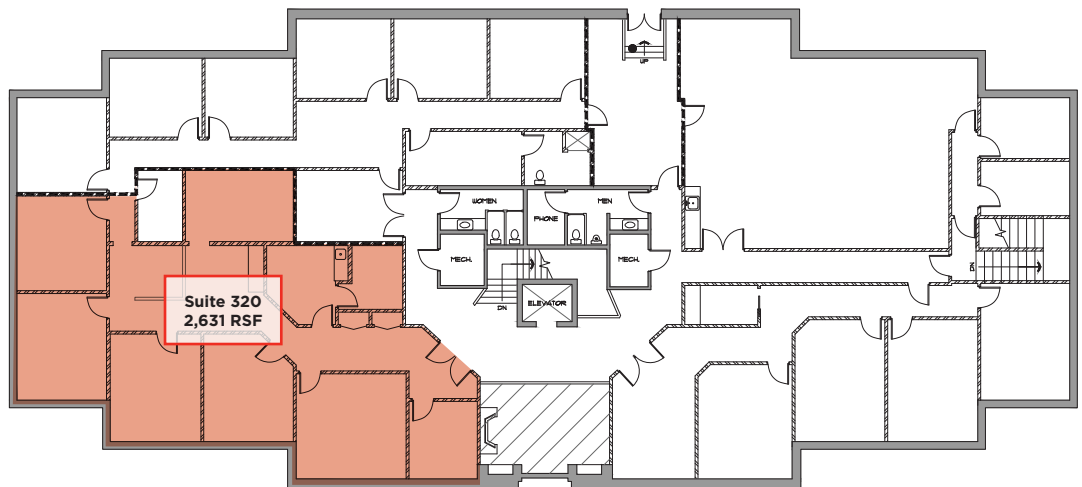
Floor 1



Floor 2



Floor 3



WASHINGTON SQUARE 151 EAST 5600 SOUTH

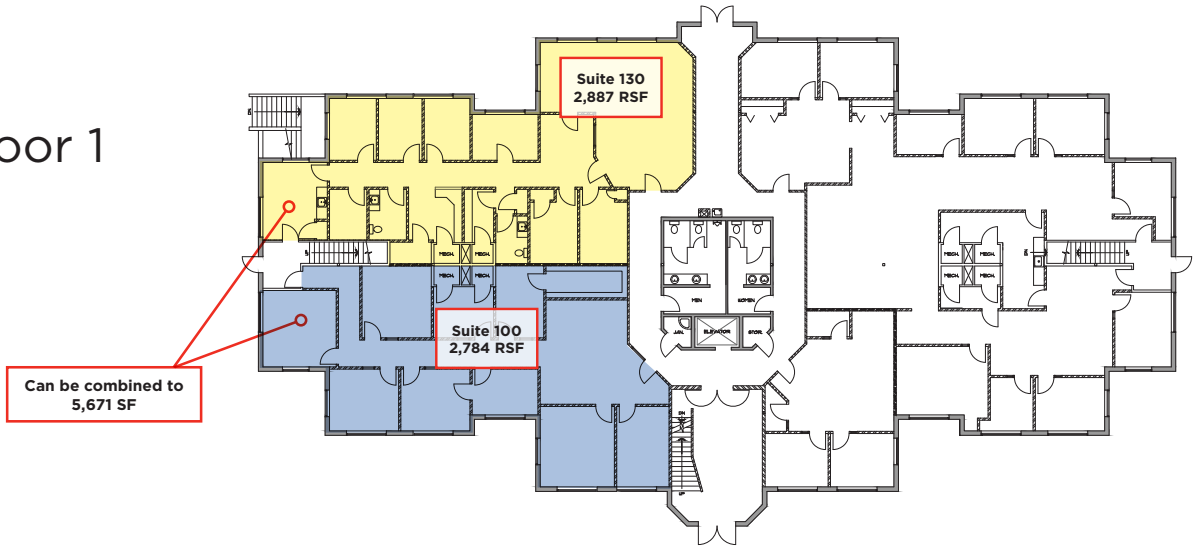


**CUSHMAN &
WAKEFIELD**

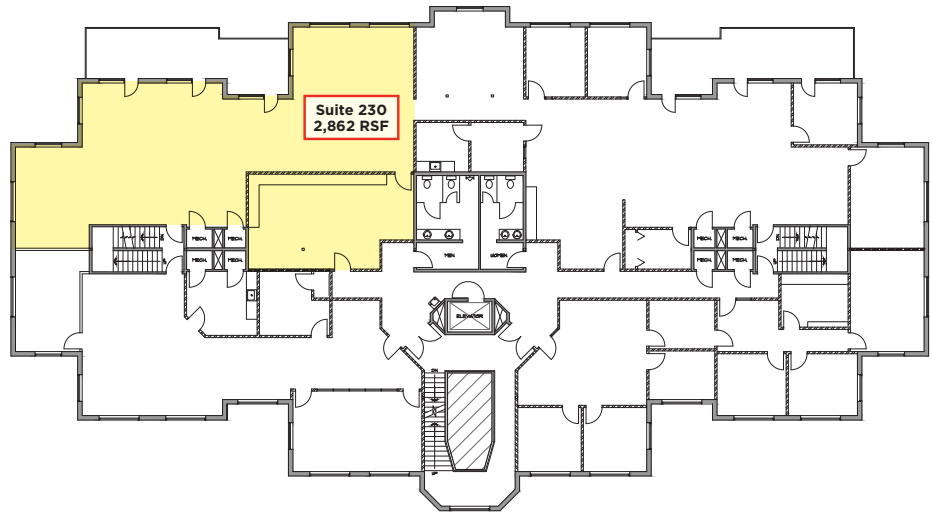
FOR LEASE

111, 141, 151, 181 East 5600 South
Murray, Utah

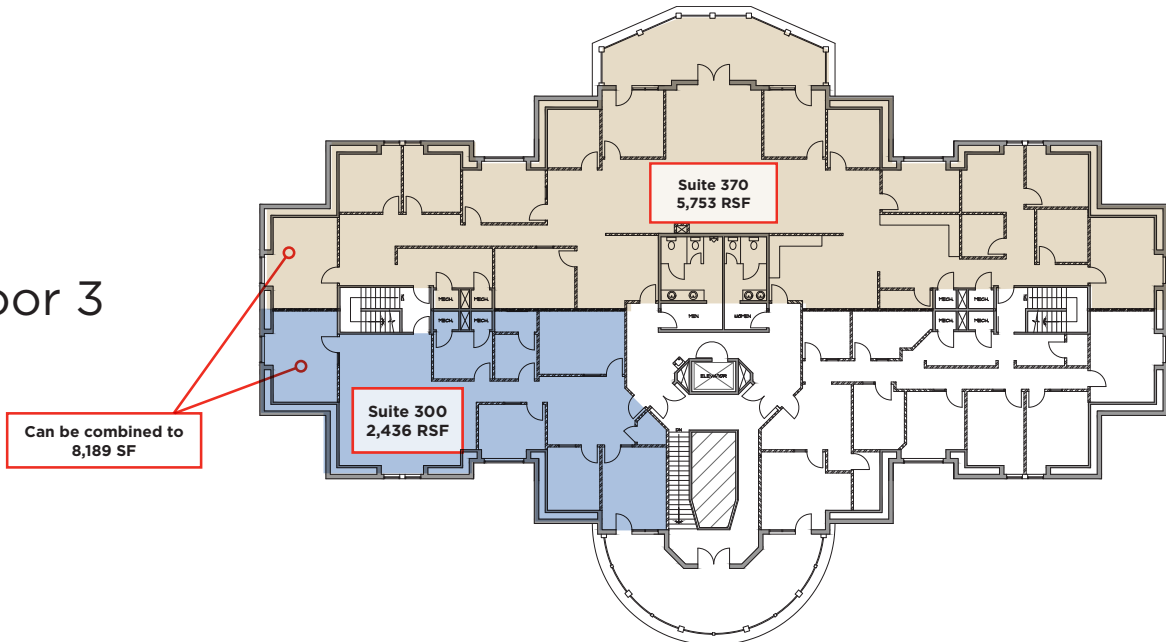
Floor 1



Floor 2



Floor 3



181 EAST 5600 SOUTH

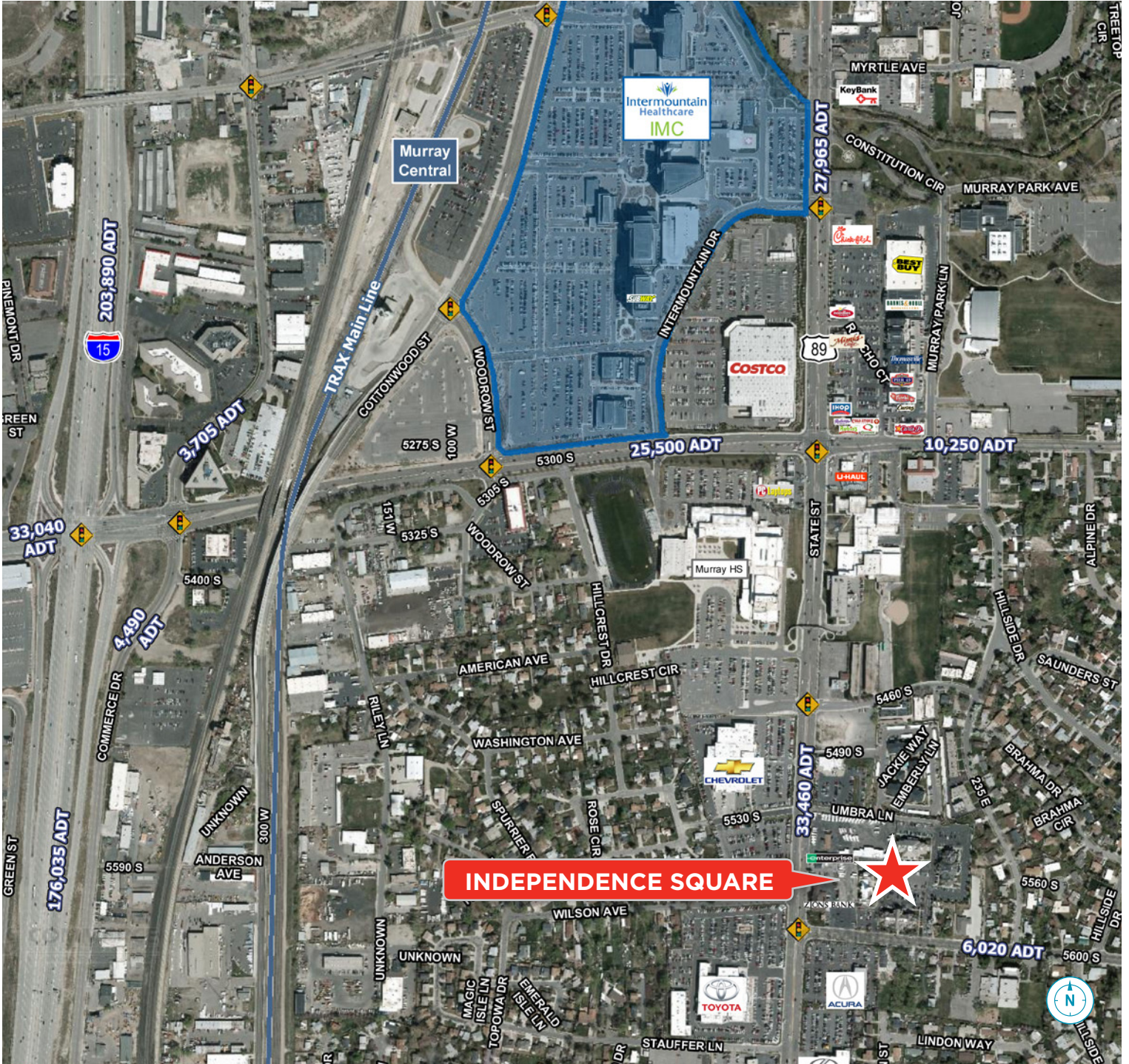
LIBERTY HALL



CUSHMAN & WAKEFIELD

FOR LEASE

111, 141, 151, 181 East 5600 South
Murray, Utah



Justin Bailey
Director
+1 801 303 5493
justin.bailey@cushwake.com

Dana Baird, CCIM
Executive Director
+1 801 303 5526
dana.baird@cushwake.com

170 South Main Street Suite 1600
Salt Lake City, UT 84101
Main +1 801 322 2000
Fax +1 801 322 2040
cushmanwakefield.com