

FOR LEASE



VIRTUAL TOUR - SUITE 200

9555
CHESAPEAKE DRIVE

9555
CHESAPEAKE
CORPORATE CENTER
DAYMON INTERACTIONS

CBRE

PROPERTY FEATURES



ADDRESS

9555 Chesapeake Drive



BUILDING SIZE

59,175 SF



BUILDING OVERVIEW

Chesapeake Corporate Center is a two-story elevator served multi-tenant office building.



SIGNAGE

Building and monument signage available



FIBER

Available through AT&T



PARKING

211 surface spaces - 4.0/1,000
USF plus street parking



ZONING

IL-2-1



PUBLIC TRANSIT

Walking distance



FIRE & LIFE SAFETY

Fully sprinklered



LEASE RATE

\$2.35/SF + Electricity & Janitorial

LOCATION

The Building is located in the northern portion of Kearny Mesa, west of Interstate 15, and one block north of Clairemont Mesa Boulevard. The project is a short 15 minute drive to downtown, the airport and coastal communities. Regional access includes I-15, I-8, I-805 and SR-52 & 163.

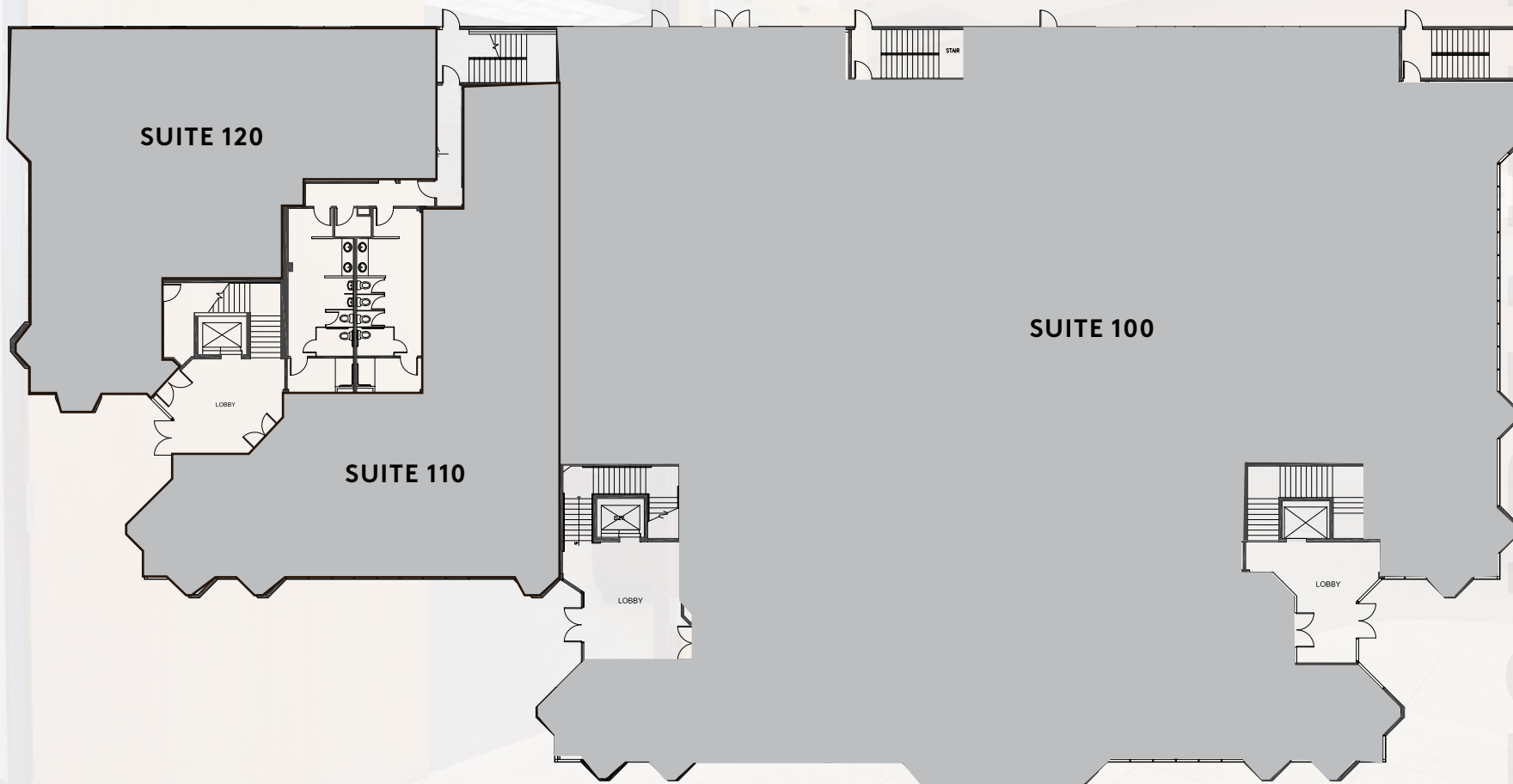
AVAILABILITY

SUITE	SIZE	AVAILABLE
200	3,019 RSF	Vacant (Spec Suite)
203	17,183 RSF	6/1/20



1ST FLOOR

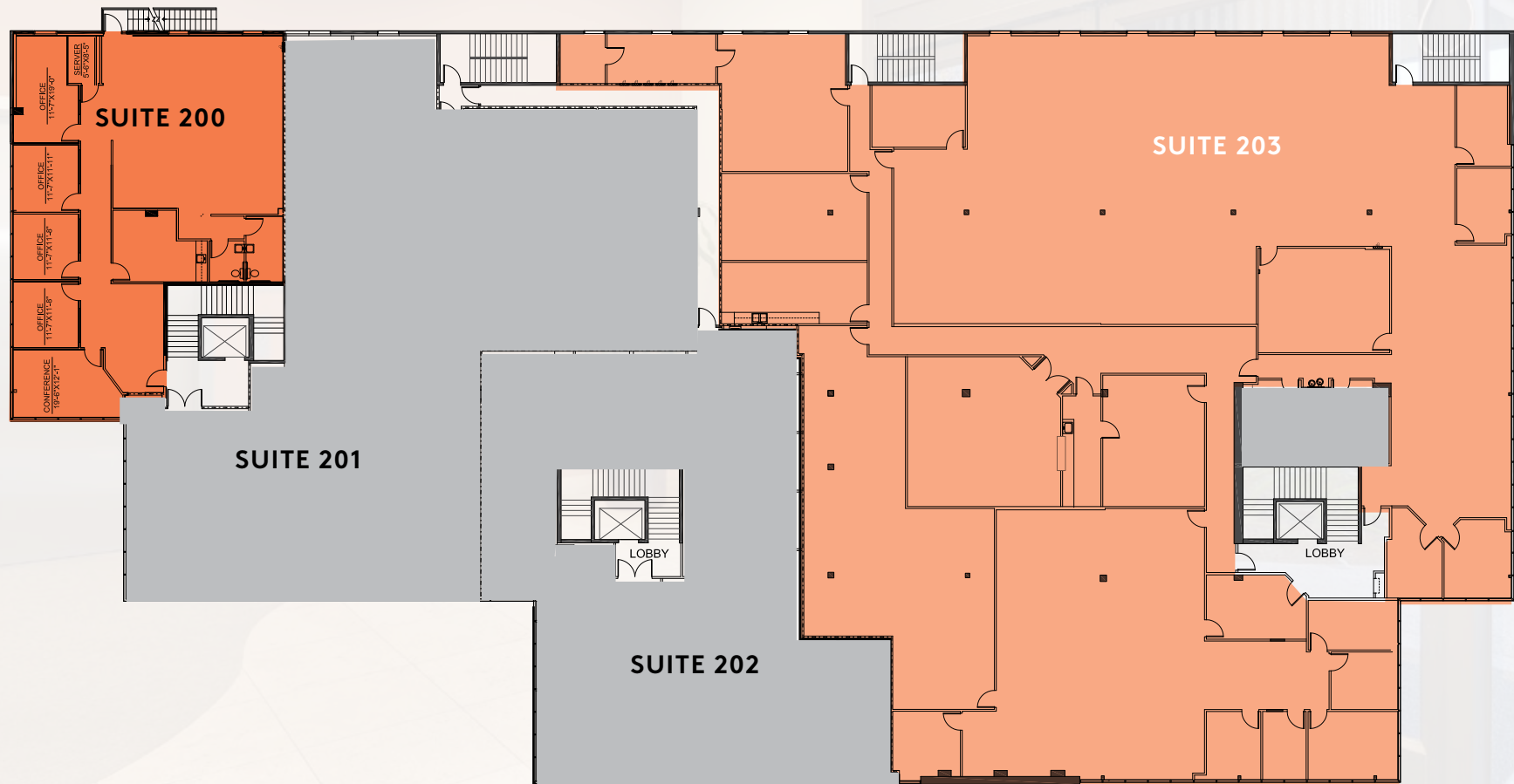
● LEASED



2ND FLOOR

SUITE 200 - 3,019 SF (SPEC SUITE)
SUITE 203 - 17,183 SF

● LEASED





**SUITE 200
SPEC SUITE
PHOTOS**

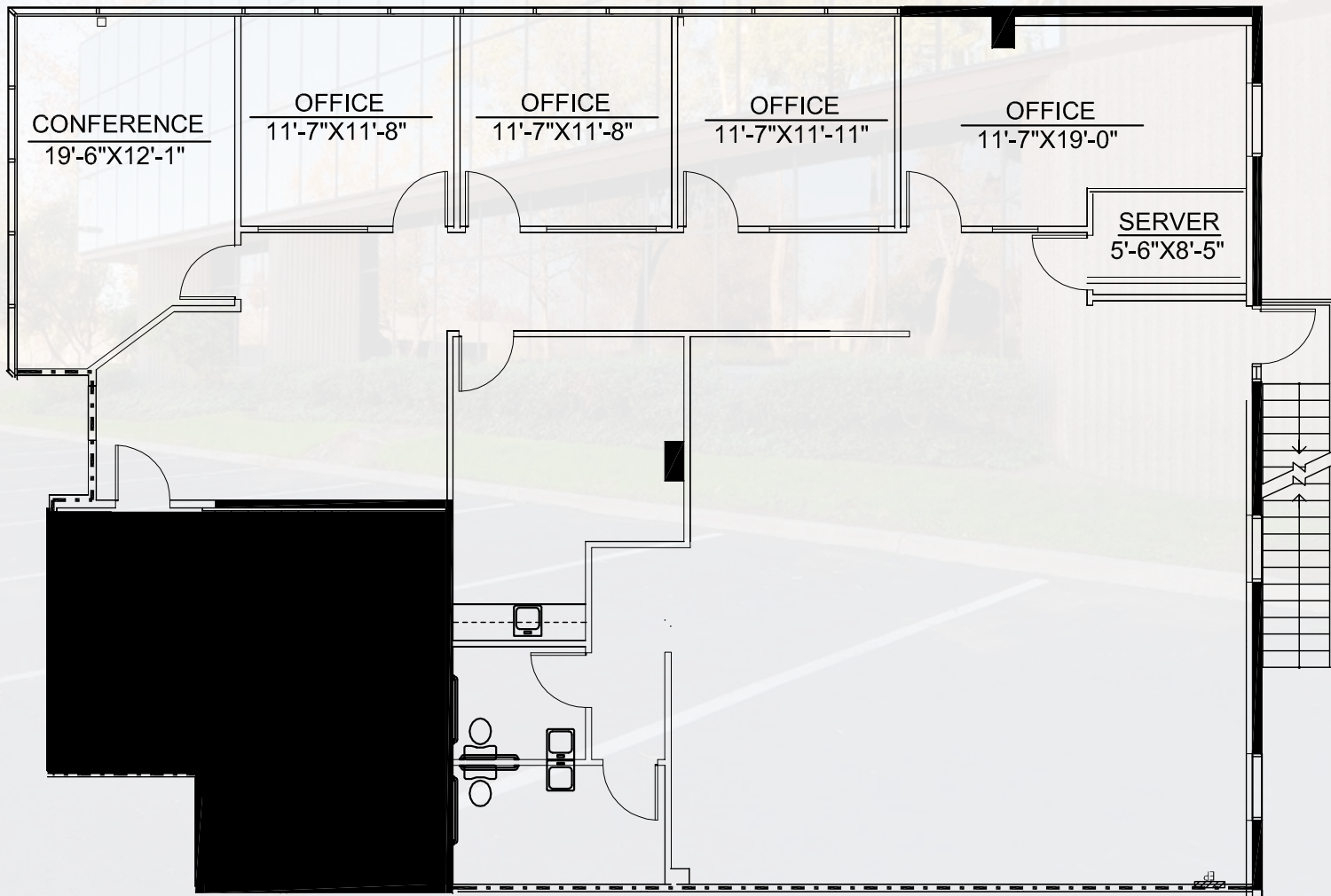
SUITE 200 AS BUILT

3,019 SF



VIRTUAL TOUR - SUITE 200

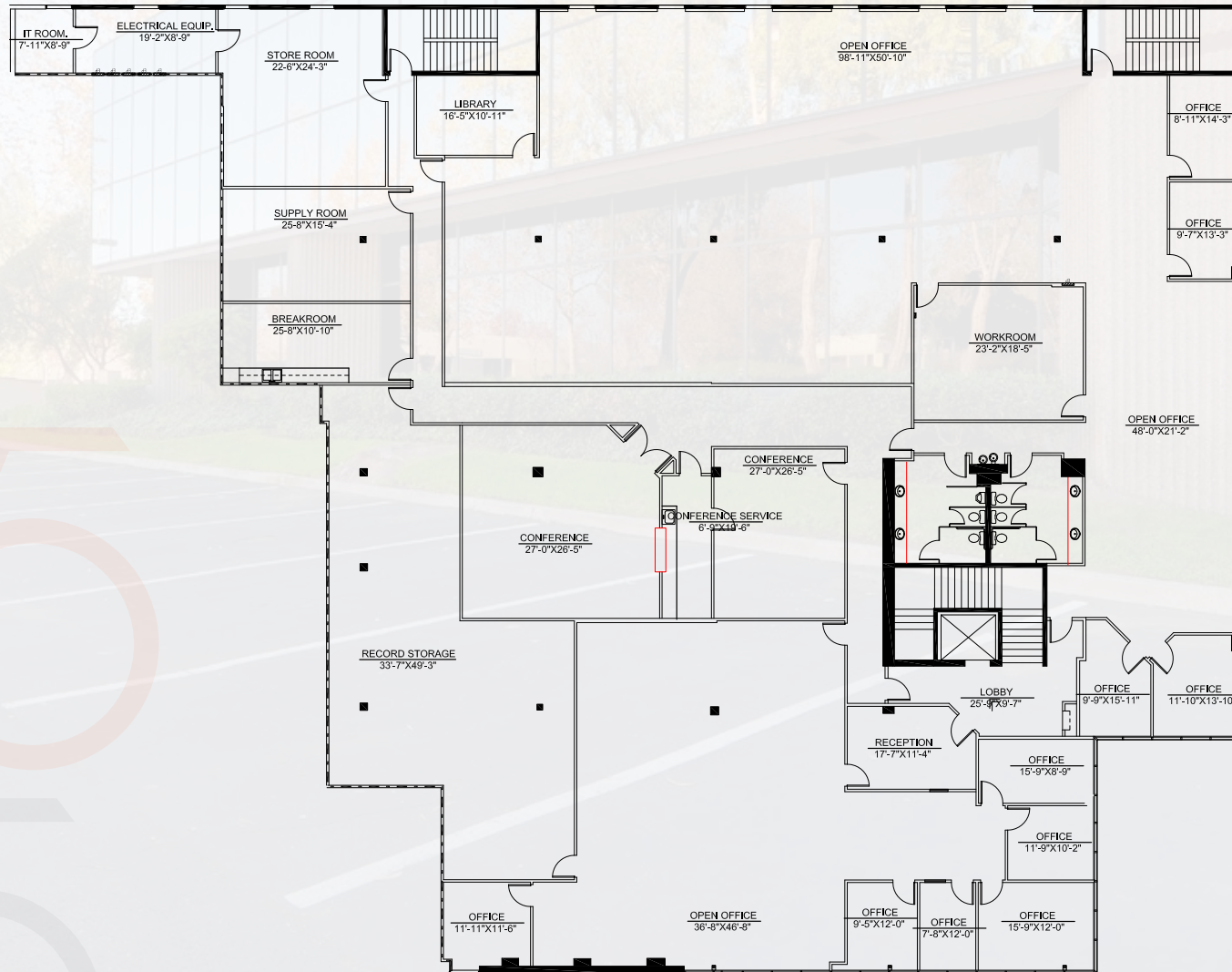
Brand New Spec Suite with new carpet, paint, LED light fixtures etc. Suite features – corner suite with 3 sides of glass, reception area, conference room with glass, 4 offices with glass, large open area, kitchen, IT room and men/ women restrooms.



SUITE 203 AS BUILT

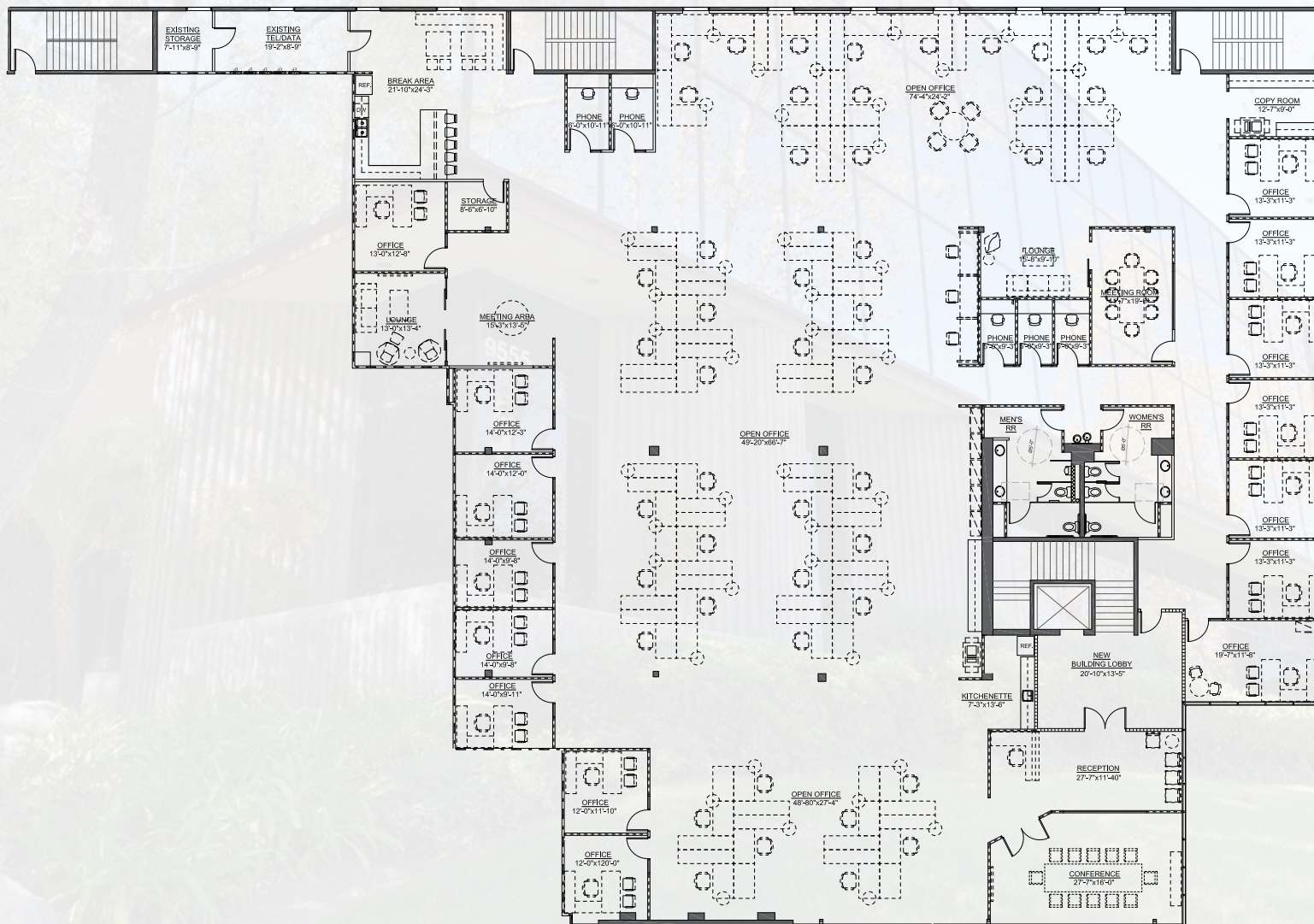
17,183 SF

Suite features reception, 11 private offices, 2 conference rooms, work room, break room, supply room, storage, IT and electrical room, men and women restrooms and open office area.

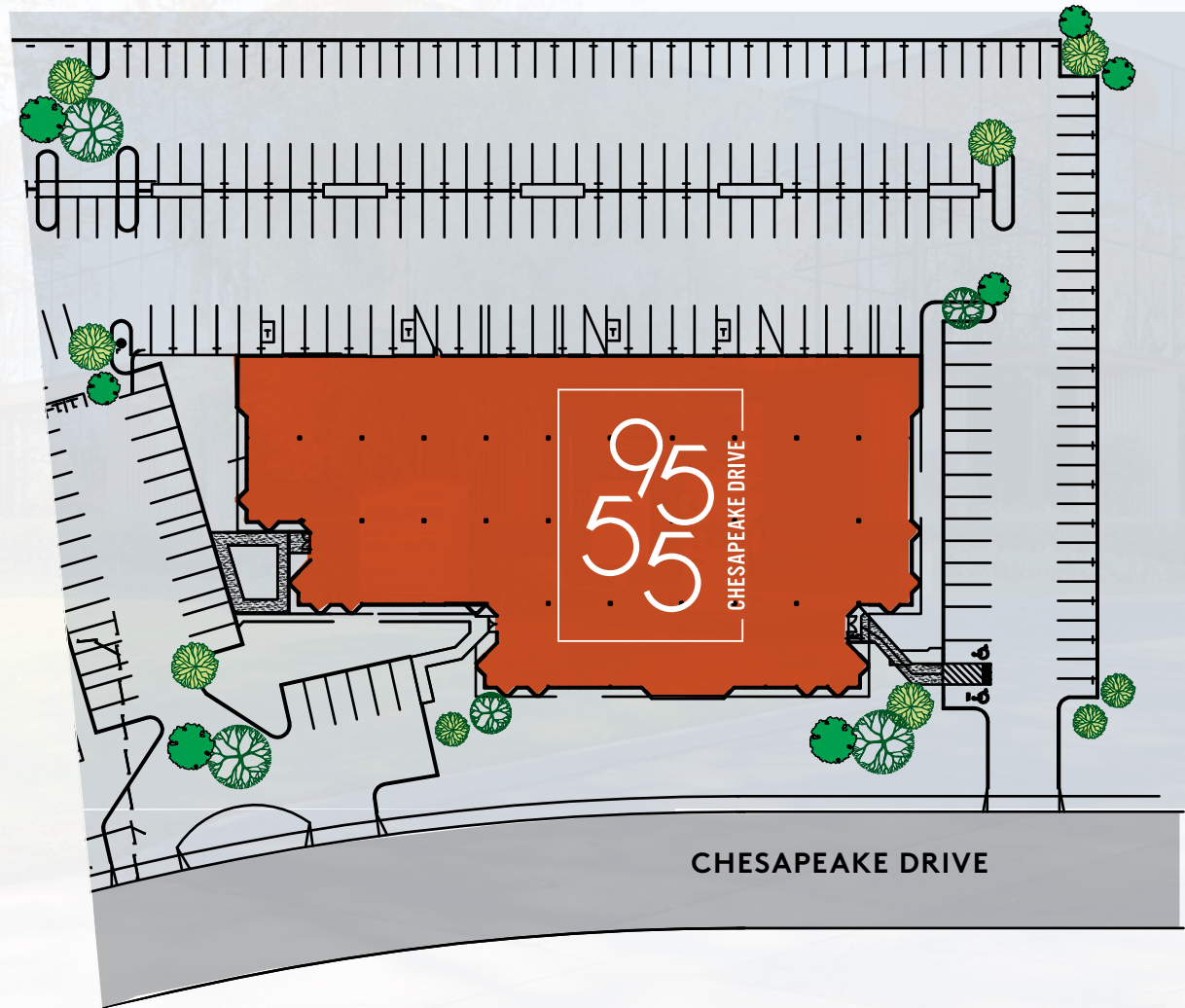


**SUITE 203
PROPOSED
PLAN
17,183 SF**

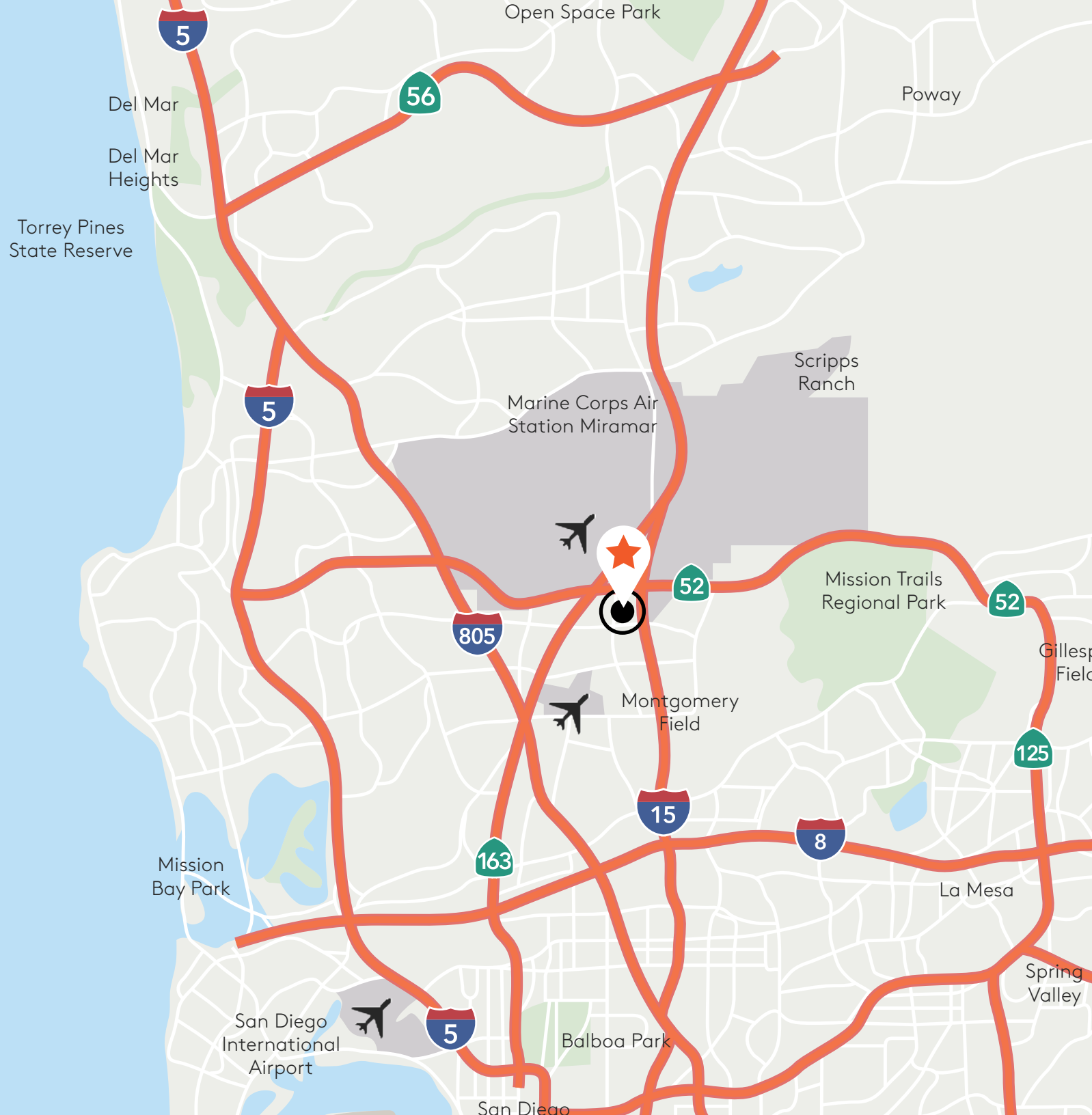
Suite features reception, 15 private offices, 2 conference rooms, call rooms, work room, break room, lounge, supply room, storage, IT and electrical room, men and women restrooms and open office area.



SITE PLAN



LOCATOR MAP



AMENITIES

DOWNTOWN

CORONADO

MISSION BAY



MONTGOMERY FIELD

STUDIO DINER

BANK OF AMERICA

SAN DIEGO SPECTUM

ARCO, Boll Weevil, Butcher Shop, California Coast Credit Union, Carl's Jr., Cort Furniture Rental, County Assessor's Office, Denny's, Dlux Cleaners, Filippi's, H & R Block, Jack in the Box, La Salsa, Marriott, McDonald's, Nextel, North Island, Credit Union, Panda Express, Red Brick Pizza, Robeks, Ruby's Cafe, San Diego Municipal Courthouse, Starbucks, Subway, Taco Bell, The Spice Cafe, Togo's, US Bank, Wells Fargo, Wendy's, YMCA

KAISER HOSPITAL



CLAIREMONT MESA BLVD

FARNHAM ST

RUFFIN RD

CHESAPEAKE DR



9555 CHESAPEAKE DRIVE

9555
CHESAPEAKE
CORPORATE CENTER
DAYMON INTERACTIONS

CBRE

FOR MORE INFORMATION CONTACT:

SCOTT KINCAID

Lic. 01228565
+1 858 546 4691
scott.kincaid@cbre.com

NICK BONNER

Lic. 01482997
+1 858 646 4777
nick.bonner@cbre.com

KRISTA KIRKSEY

Lic. 01405552
+1 858 546 2620
krista.kirksey@cbre.com

© 2020 CBRE, Inc. All rights reserved. This information has been obtained from sources believed reliable, but has not been verified for accuracy or completeness. You should conduct a careful, independent investigation of the property and verify all information. Any reliance on this information is solely at your own risk. CBRE and the CBRE logo are service marks of CBRE, Inc. All other marks displayed on this document are the property of their respective owners, and the use of such logos does not imply any affiliation with or endorsement of CBRE.