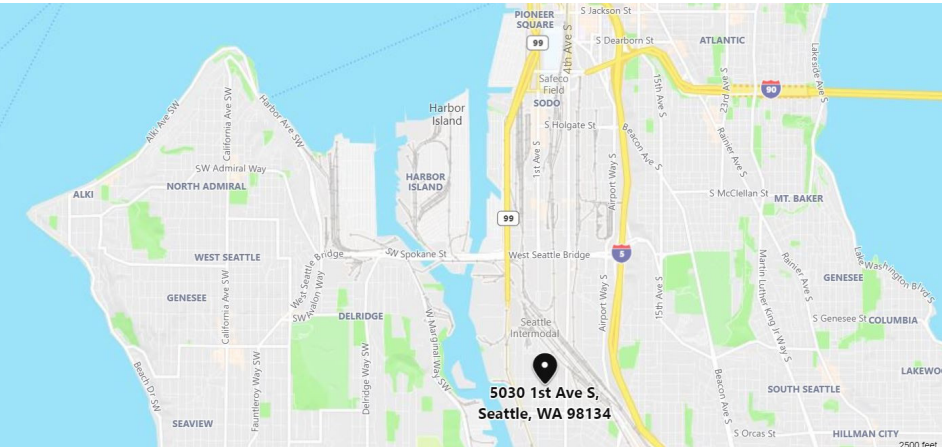


OFFICE SUBLEASE

SOUTH SEATTLE/GEORGETOWN

5030 FIRST AVENUE SOUTH, SUITE 310

SEATTLE, WA 98134



SUBLEASE DETAILS

- Size: 1,400 RSF
- Rate: \$22.00 PSF, Full Service
- Date Available: September 1, 2019
- Sublease Term: 1 to 2 years
- Notes: 3 private offices, conference room and open area. Quality finishes and high ceilings. Large deck with unobstructed views of downtown Seattle and Mount Rainier.

Contact Information

Ryan Kadletz, Founder & Designated Broker

206.650.0883

ryan@montlakepartners.com

MONTLAKE PARTNERS
COMMERCIAL REAL ESTATE

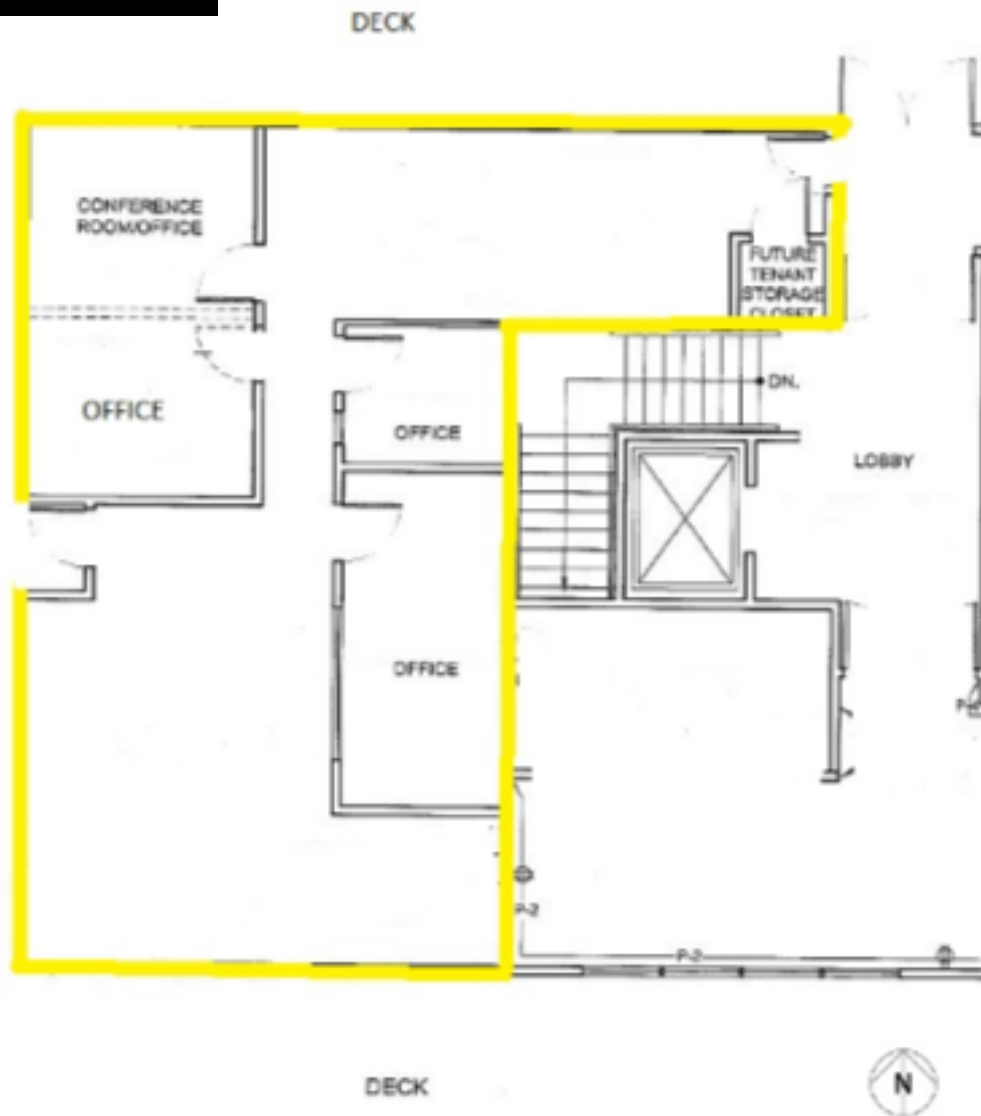
OFFICE SUBLEASE

SOUTH SEATTLE/GEORGETOWN

5030 FIRST AVENUE SOUTH, SUITE 310

SEATTLE, WA 98134

FLOOR PLAN



Contact Information

Ryan Kadletz, Founder & Designated Broker

206.650.0883

ryan@montlakepartners.com

MONTLAKE PARTNERS
COMMERCIAL REAL ESTATE

The information contained herein has been obtained from sources deemed reliable but is not guaranteed.

WWW.MONTLAKEPARTNERS.COM