

Centrally Located Showroom Building

For Lease: \$10NNN
598 East Atlantic Blvd.
Pompano Beach, FL 33060



FOR LEASE	2 Story 14,330 Sq. Ft. on .34 Acres			
DESCRIPTION	This retail showroom property is centrally located in the heart of Pompano Beach and was a former electronics and appliance retailer. This 2 story building includes dock high loading, 3 phase power and a freight elevator. This building would be well suited for a retail tenant seeking high visibility and traffic counts.			
PROPERTY VIDEO	https://www.youtube.com/embed/eWFpaxpS5bw?rel=0			
LOCATION	SE Corner of Atlantic Blvd and SE 6 Ave.			
TRAFFIC COUNT	39,469 Atlantic Blvd.			
CEILING HEIGHTS/ ELECTRIC SERVICE	14' / 3 Phase Electric			
YEAR BUILT/ LOADING	1966/ 1 dock high door with freight elevator to the 2 nd floor			
ZONING/ FOLIO	B-3 4942 01 00 0200			
DEMOGRAPHICS 2016		1 mile	3 mile	5 mile
	HH Population:	15,762	116,800	268,671
	Average HH Income:	\$57,502	\$67,768	\$66,359

Disclaimer: This offering subject to errors, omissions, prior sale or withdrawal without notice.

CAMPBELL & ROSEMURGY
COMMERCIAL REAL ESTATE

FOR MORE INFORMATION:

John D. McQueston

john@johnmcqueston.com • 561-706-7721 (cell)

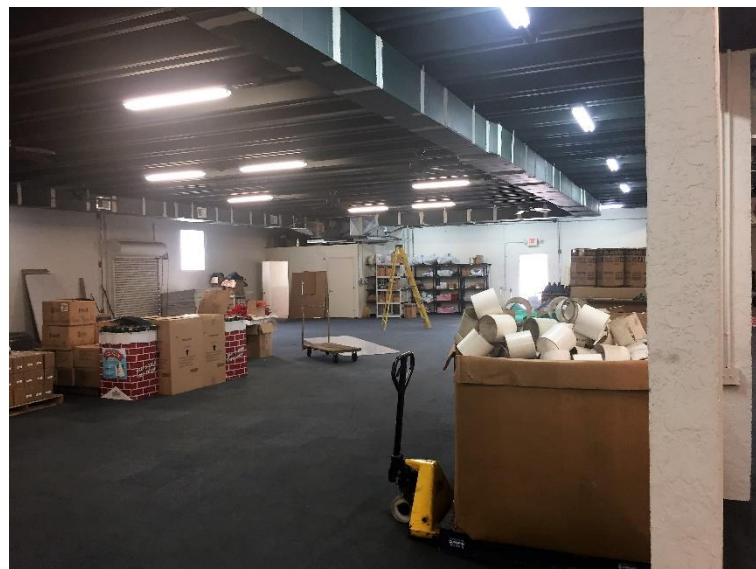
www.johnmcqueston.com

1233 E. Hillsboro Blvd
Deerfield Beach, FL 33441

954.427.8686 T.
954.427.0117 F.

Location & Aerial Map

For Lease: \$10NNN
598 East Atlantic Blvd.
Pompano Beach, FL 33060



Disclaimer: This offering subject to errors, omissions, prior sale or withdrawal without notice.

CAMPBELL & ROSEMURGY
COMMERCIAL REAL ESTATE

FOR MORE INFORMATION:

John D. McQuestion

john@johnmcquestion.com • 561-706-7721 (cell)

www.johnmcquestion.com

1233 E. Hillsboro Blvd
Deerfield Beach, FL 33441

954.427.8686 T.
954.427.0117 F.