

## 5 PENN PLAZA

BETWEEN 33RD & 34TH STREETS

### Area:

ENTIRE 3RD FLOOR: 28,977 RSF

### Rental Rate:

UPON REQUEST

### Possession:

IMMEDIATE

### Term:

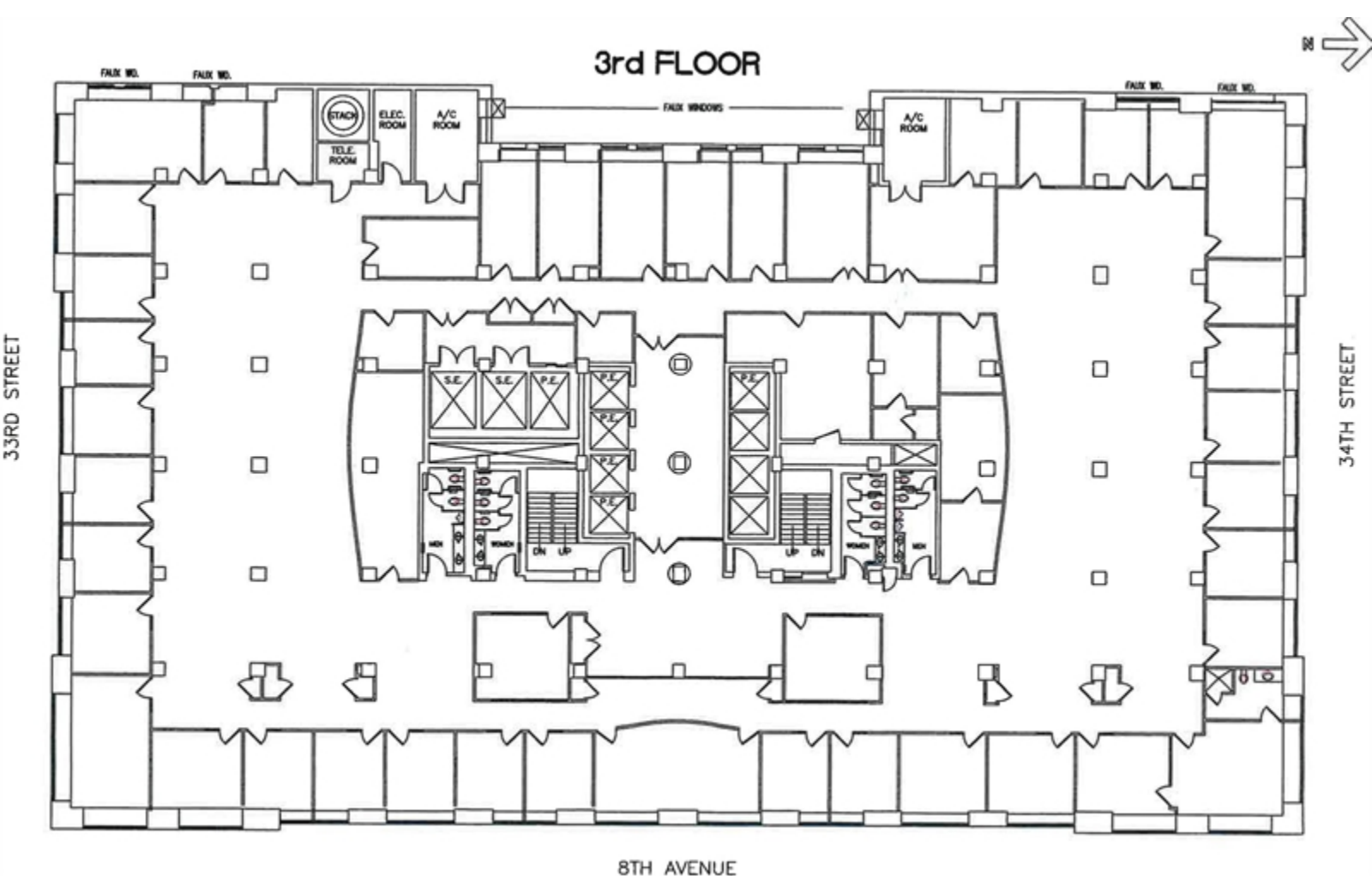
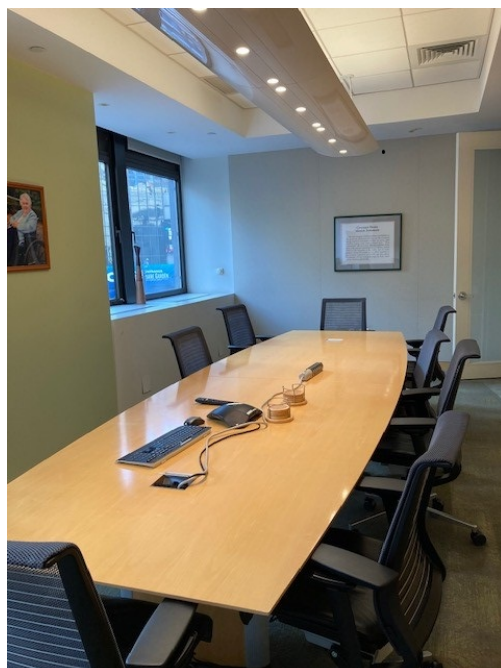
THROUGH MARCH 30, 2022  
(DIRECT EXTENSION AVAILABLE)

[DOWNLOAD BROCHURE](#)



### Comments:

- Full Floor Opportunity
- Built and Fully Furnished Space
- 14' Exposed Ceilings
- Mix of Offices, Open Area and Conference Rooms
- Across the Street from Penn Station
- Proximity to all Major Subway Lines



### For information, please contact:

#### DAVID BERKE

SENIOR MANAGING DIRECTOR

t 212-372-2478

[david.berke@nmrk.com](mailto:david.berke@nmrk.com)

#### LANCE KORMAN

VICE CHAIRMAN

t 212-372-2160

[lance.korman@nmrk.com](mailto:lance.korman@nmrk.com)

125 Park Avenue  
New York, NY 10017  
t 212-372-2000

[nmrk.com](http://nmrk.com)



125 Park Avenue, New York, NY 10017 t 212-372-2000

The information contained herein has been obtained from sources deemed reliable but has not been verified and no guarantee, warranty or representation, either express or implied, is made with respect to such information. Terms of sale or lease and availability are subject to change or withdrawal without notice.

©2022 Newmark. All Rights Reserved.