

## Price Reduction



### Office/Warehouse Space Available

- 8,192 RSF available ( $\pm 6,704$  SF office &  $\pm 1,488$  SF warehouse)
- Excellent access to 69 Hwy and I-35 in the heart of highly-desirable Johnson County submarket
- Located in Congelton Industrial Park
- Exterior/monument signage opportunity available
- Fully renovated in 2012 (Free stainless steel appliances and marble counter tops in break rooms)
- Flex capabilities and loading

The information contained in this marketing flyer is presented as general information only. Block Real Estate Services, LLC makes no representation as to its accuracy. This information is not intended as legal, financial or real estate advice and must not be relied upon as such. You should make your own inquiries, obtain independent inspections, and seek professional advice tailored to your specific circumstances before making any legal, financial or real estate decisions.

### For more information:

Andrew T. Block  
816.412.5873  
ablock@blockllc.com

## Building Specifications

Building Size:	8,192 SF (±6,704 SF office & ±1,488 SF warehouse)
Building Description:	Two-story concrete tilt-up
Space Available:	8,192 SF available
Available:	Immediately
Sale Price:	\$885,000
Parking:	3.6 : 1,000
Zoning:	M-1 (Industrial Park District)
Loading:	2 drive-in door
Utilities:	Electricity - Kansas City Power and Light Gas - KPL Gas Services Water - Water District #1 of Johnson County

### Stainless Steel Appliances & Other

- Included in Sale:
- Refrigerator in Break Room
  - Ice Maker
  - Microwave
  - Keurig
  - Single Zone Wine Refrigerator Unit
  - Marble Countertops in Break Room
  - Multiple Cube Sets and Nice Wooden Office Desks/Sets

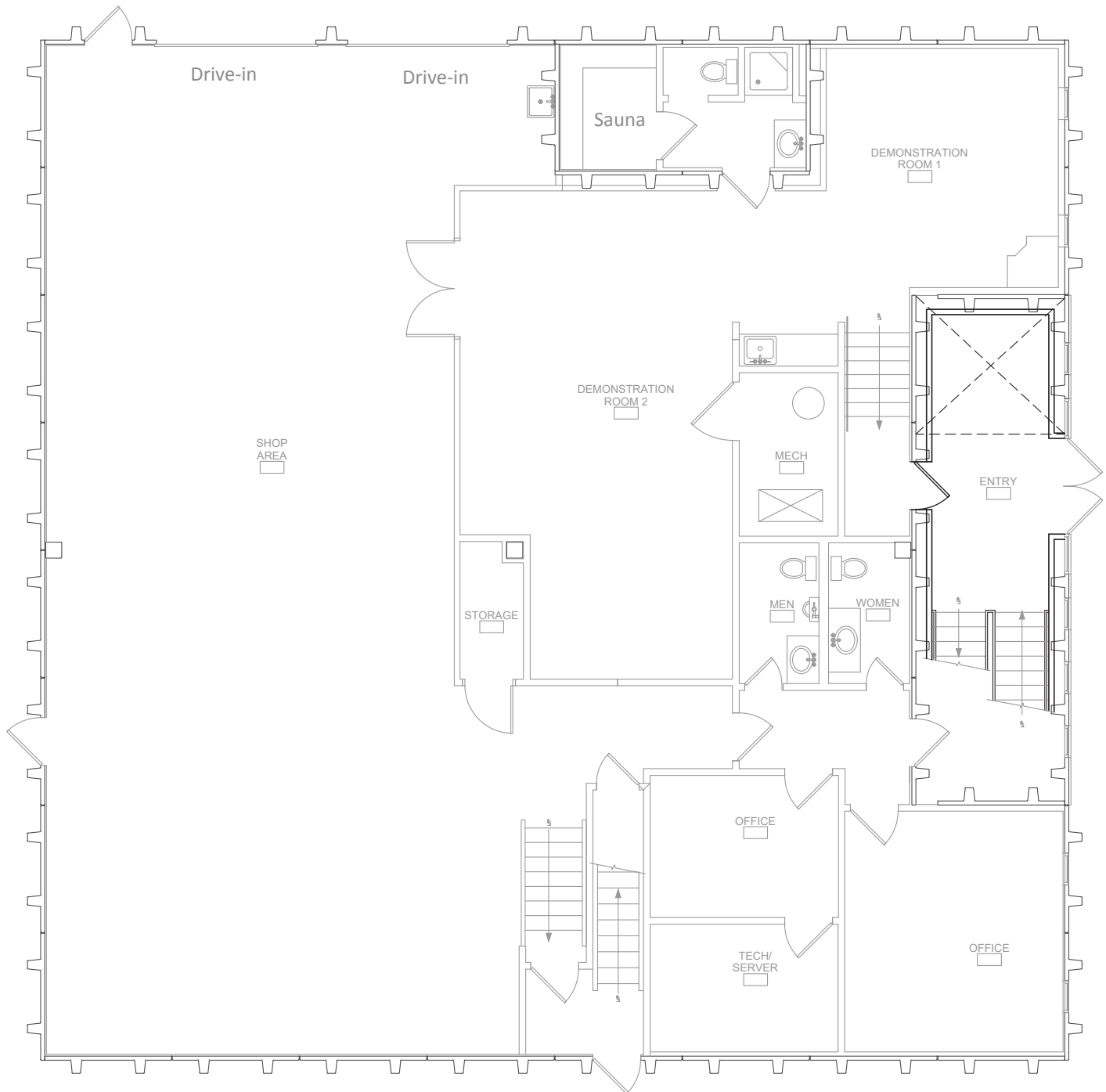
Seller Offering:	Repaint Exterior of Building to Buyer Specifications
------------------	--

Great visibility and easy access to I-35, 69 Hwy, I-435, 87th, and 95th Street

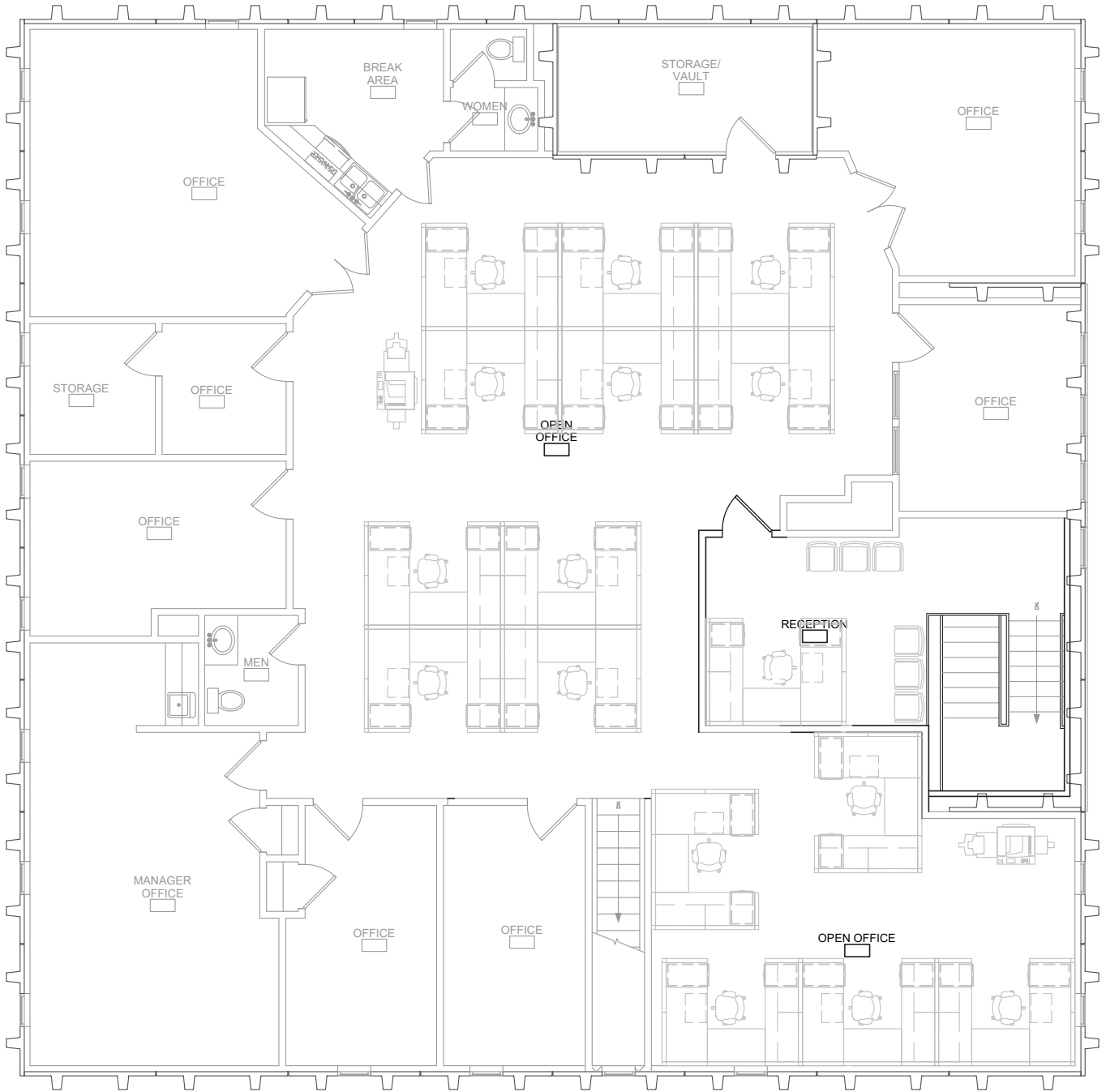
For more information:

Andrew T. Block  
816.412.5873  
ablock@blockllc.com

Lower Level Floor Plan



Upper Level Floor Plan

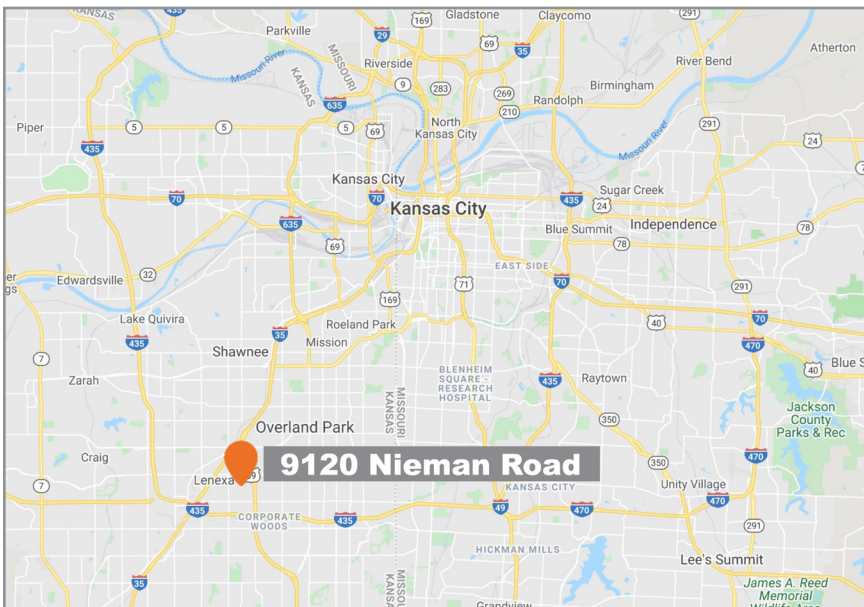


**1** Floor Plan  
Upper Level  
3/16" = 1'-0"



9120 Nieman Road  
Overland Park, Kansas 66214

For Sale



For more information:

Andrew T. Block  
816.412.5873  
ablock@blockllc.com

700 W. 47th Street, Suite 200  
Kansas City, MO 64112  
816.756.1400 | www.BLOCKLLC.com

**BLOCK**  
REAL ESTATE SERVICES, LLC