



+ Marks
The
Spot

Goodman Commerce Center Eastvale

Adjacent to I-15 between Cantu-Galleano Ranch Road and Bellegrave Avenue

business+ park



The new heart of business.

Goodman's Eastvale Business Park delivers brand new, modern, centrally located commercial space surrounded by amenities and key transport infrastructure.

Explore the flexible, freestanding and multi-tenant opportunities to suit your business' growth.

Development details		
Building	Total s.f.	Type
Building 1	40,000	Free standing
Building 2	26,500	Free standing
Building 3	24,000	Free standing
Building 4 + 5	Leased	Free standing
Building 6	Suites from 1,200–8,500	Multi-tenant
Building 7	Suites from 1,200–8,500	Multi-tenant
Building 8	Suites from 1,200–8,500	Multi-tenant



Marks
The
Spot

Scale + Flexibility

Customize your floorplan with spaces ranging from 1,200–40,000 s.f.

amenity+ choice



Onsite

Hotel, childcare, gym, restaurants, hospital, medical healthcare.

Community

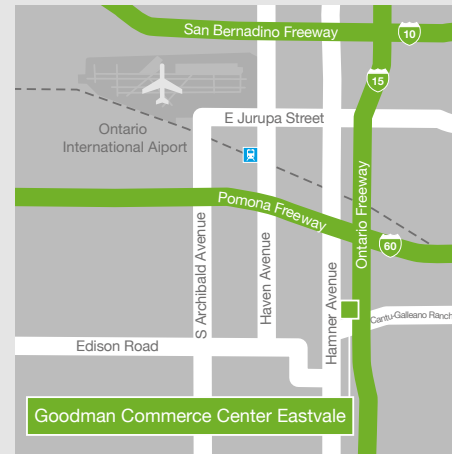
Business-friendly, affluent, diverse, highly skilled workforce, Corona-Norco Unified School District.



location+ convenience



Positioned for success, your employees and customers will enjoy unrivaled convenience and access to on-site amenities and major transport routes.



#1

Ranked city in CA for
education, health and safety



8mi

to Ontario
International Airport



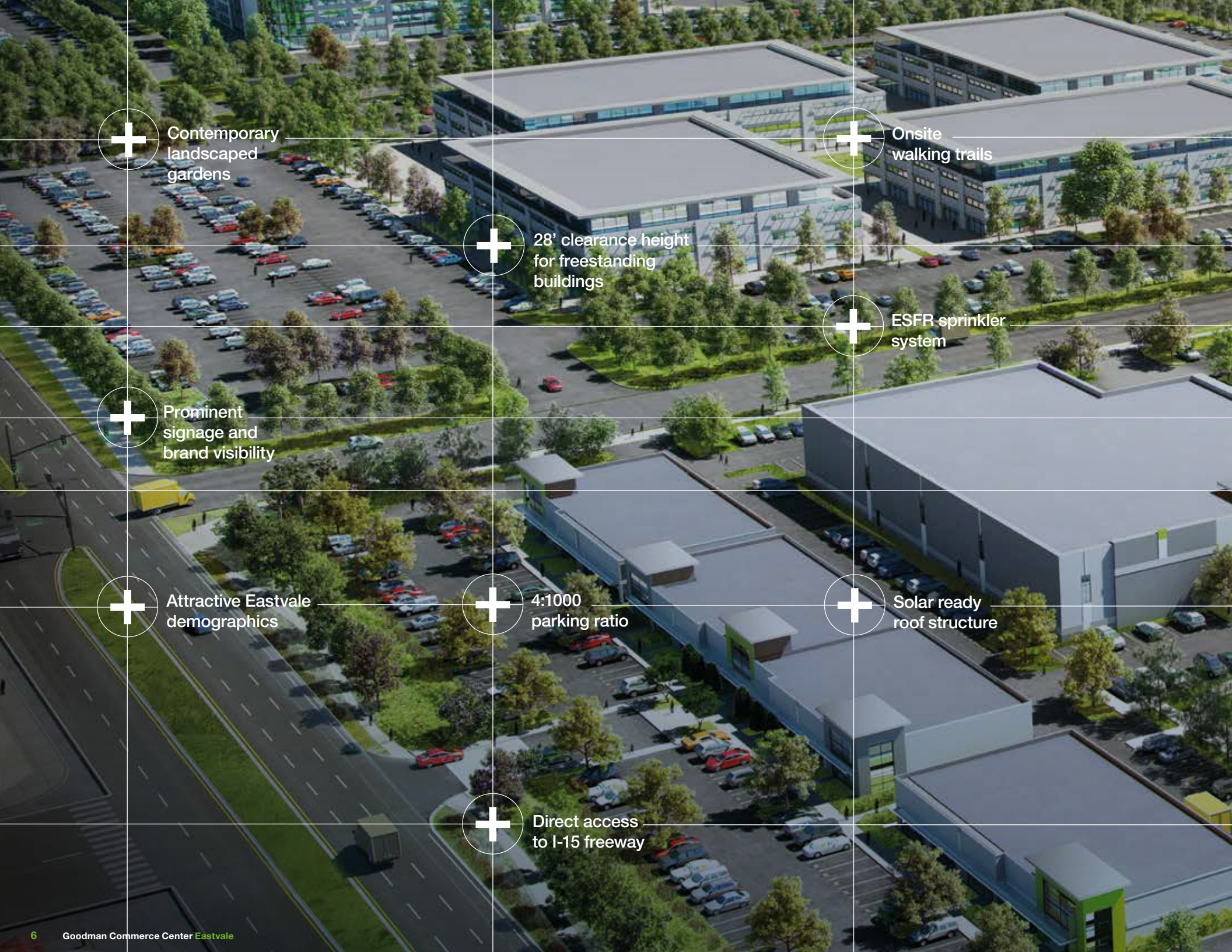
146,000

New homes planned
within 2 mi



7mi

to 91 Interchange



Contemporary landscaped gardens

Onsite walking trails

28' clearance height for freestanding buildings

ESFR sprinkler system

Prominent signage and brand visibility

4:1000 parking ratio

Solar ready roof structure

Attractive Eastvale demographics

Direct access to I-15 freeway



Flexible layouts and custom design



Campus style workplace design



Onsite hotel



LEED Certified



Space from 1,200-40,000 s.f.



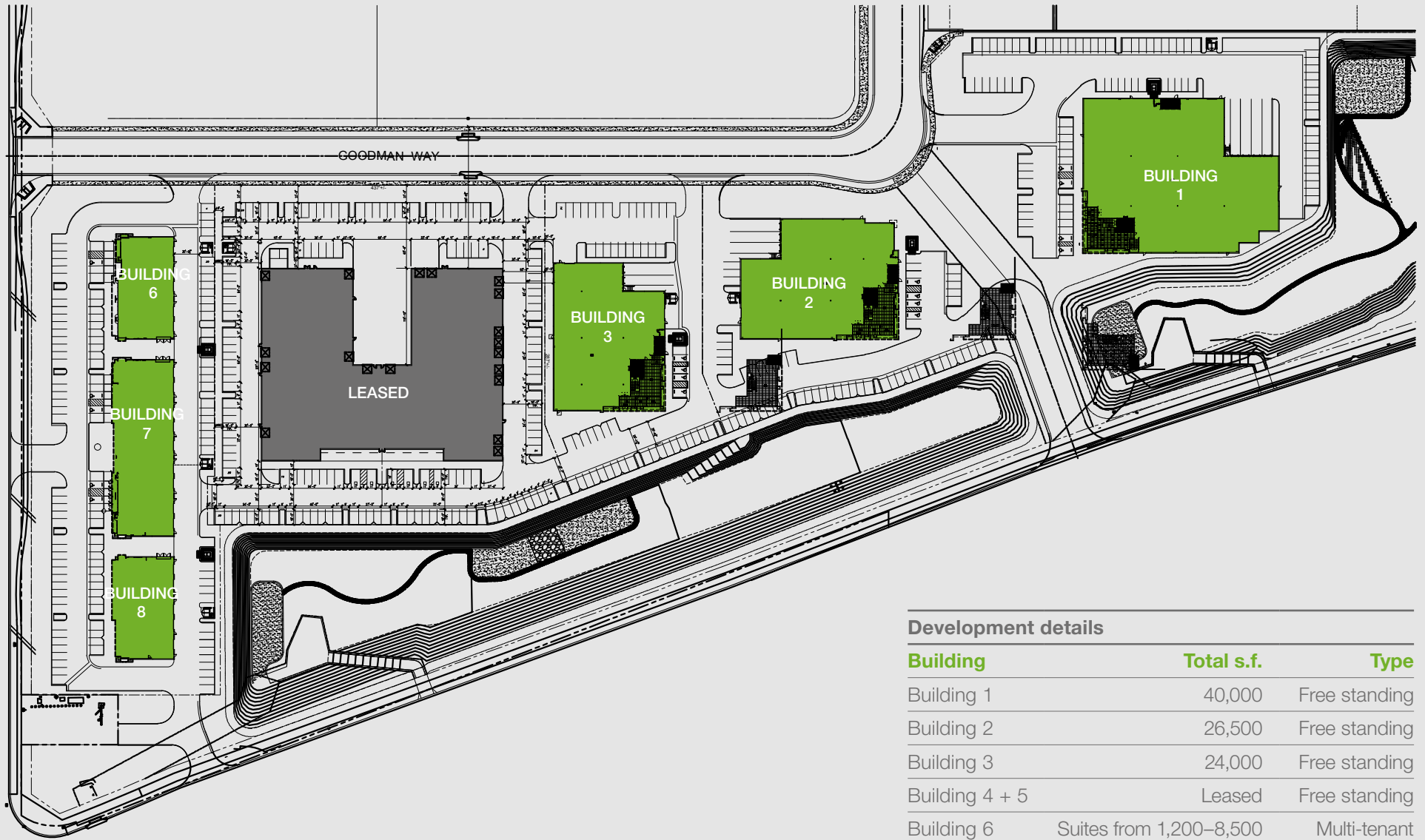
Minutes from OC and LA



Available for occupancy: Q1 2017

Features+

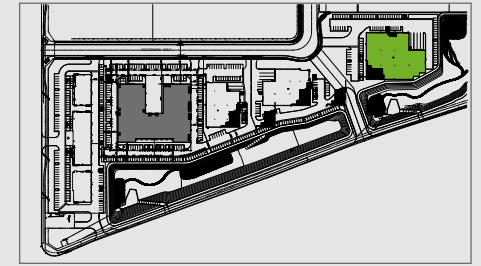
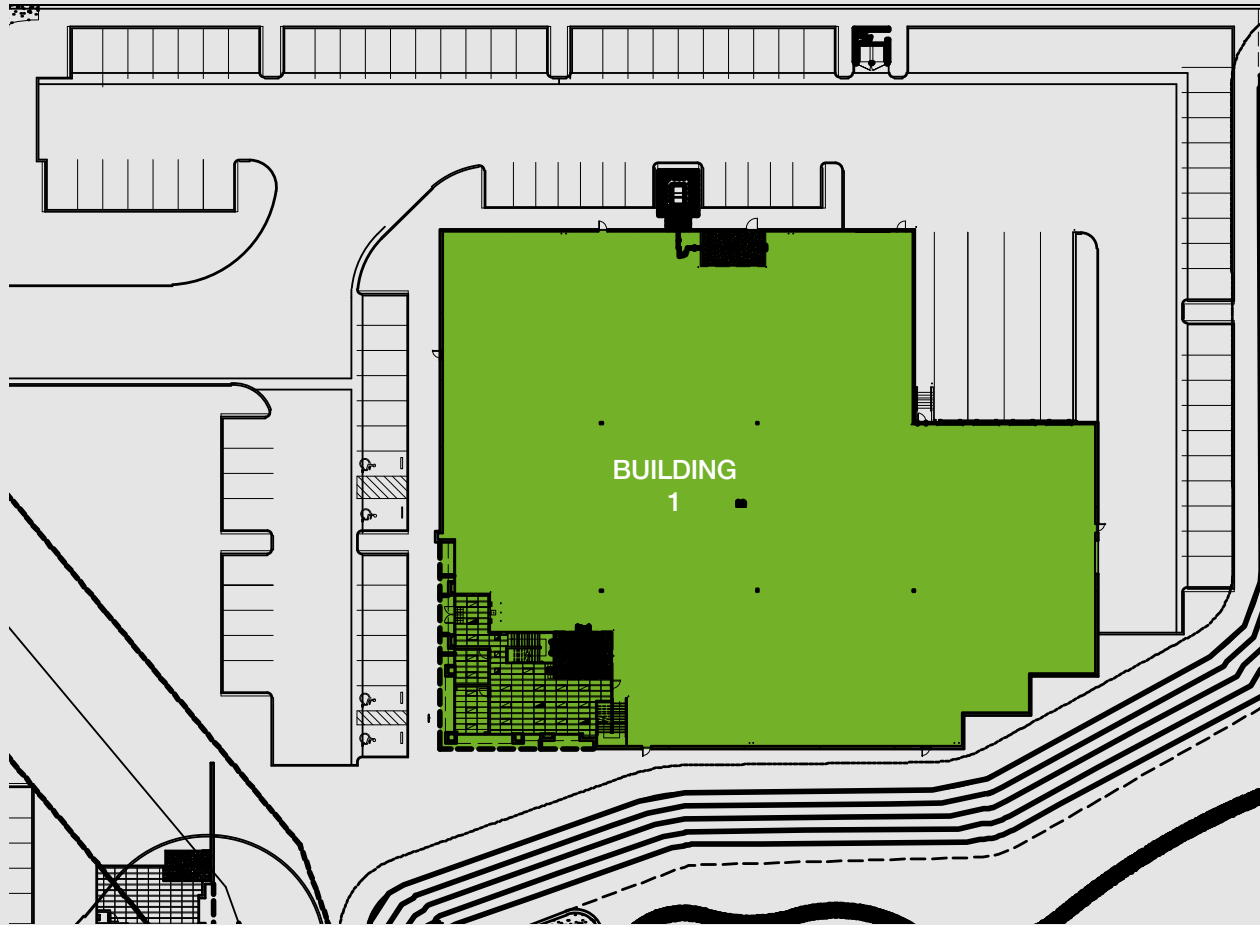
SITE PLAN+



Development details

Building	Total s.f.	Type
Building 1	40,000	Free standing
Building 2	26,500	Free standing
Building 3	24,000	Free standing
Building 4 + 5	Leased	Free standing
Building 6	Suites from 1,200–8,500	Multi-tenant
Building 7	Suites from 1,200–8,500	Multi-tenant
Building 8	Suites from 1,200–8,500	Multi-tenant

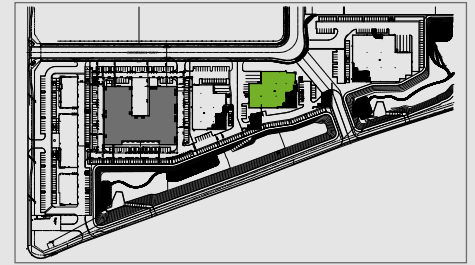
BUILDING 1 PLAN+



Building details

Building 1	40,000 s.f.
Type	Freestanding
Office	1,950 s.f.
Warehouse	35,954 s.f.
Mezzanine	2,096 s.f.
Clear height	28'
Grade level doors	2 (12'x14')
Dock high doors	4 (9'x10')
Power	1,200 Amps/480 volts 277
Parking stalls	91 spaces
Fire	.50/2,000 system

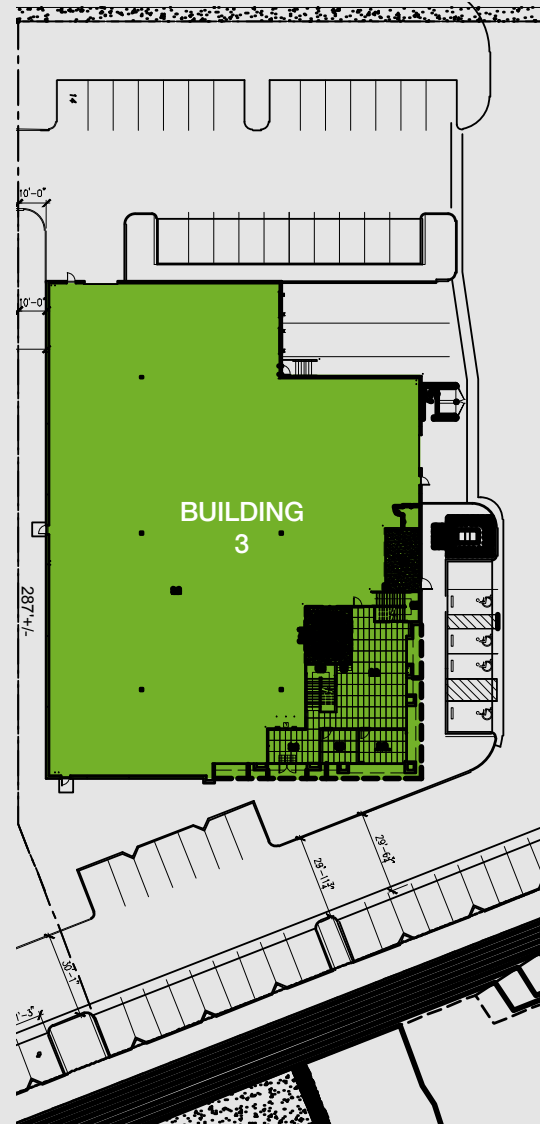
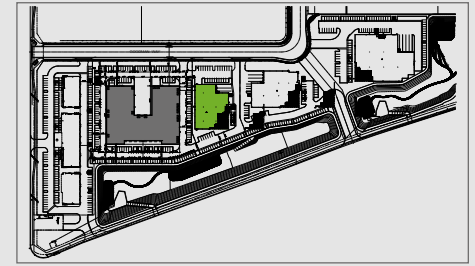
BUILDING 2 PLAN+



Building details

Building 2	26,500 s.f.
Type	Freestanding
Office	1,950 s.f.
Warehouse	22,454 s.f.
Mezzanine	2,096 s.f.
Clear height	28'
Grade level doors	1 (12'x14')
Dock high doors	3 (9'x10')
Power	1,200 Amps 277/480 volts
Parking stalls	62 spaces
Fire	.50/2,000 system

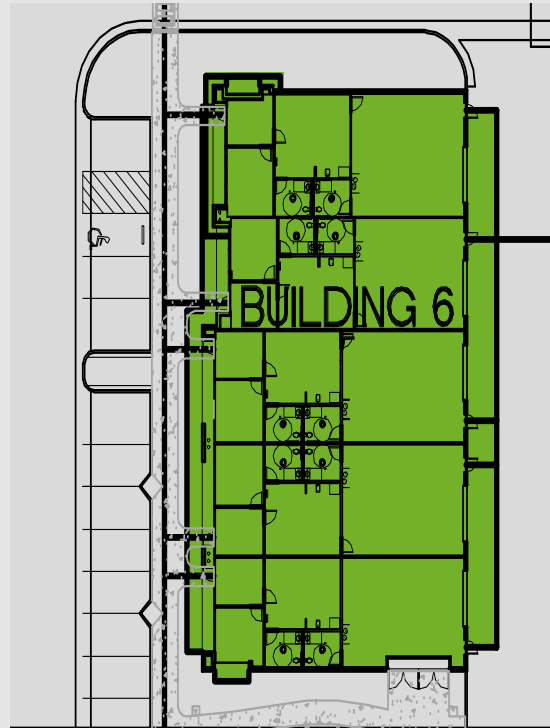
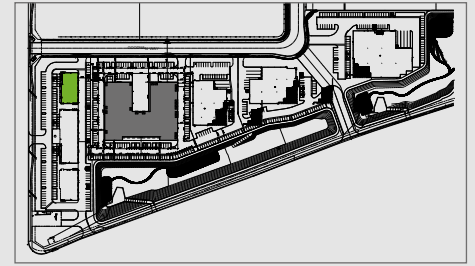
BUILDING 3 PLAN+



Building details

Building 3	24,000 s.f.
Type	Freestanding
Office	1,950 s.f.
Warehouse	19,954 s.f.
Mezzanine	2,096 s.f.
Clear height	28'
Grade level doors	2 (12'x14')
Dock high doors	2 (9'x10')
Power	1,200 Amps 277/480 volts
Parking stalls	56 spaces
Fire	.50/2,000 system

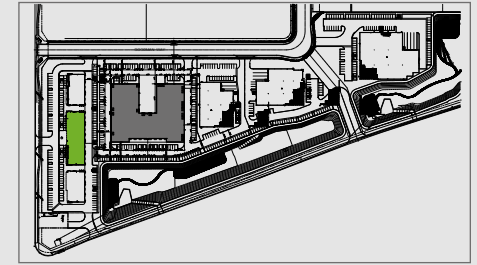
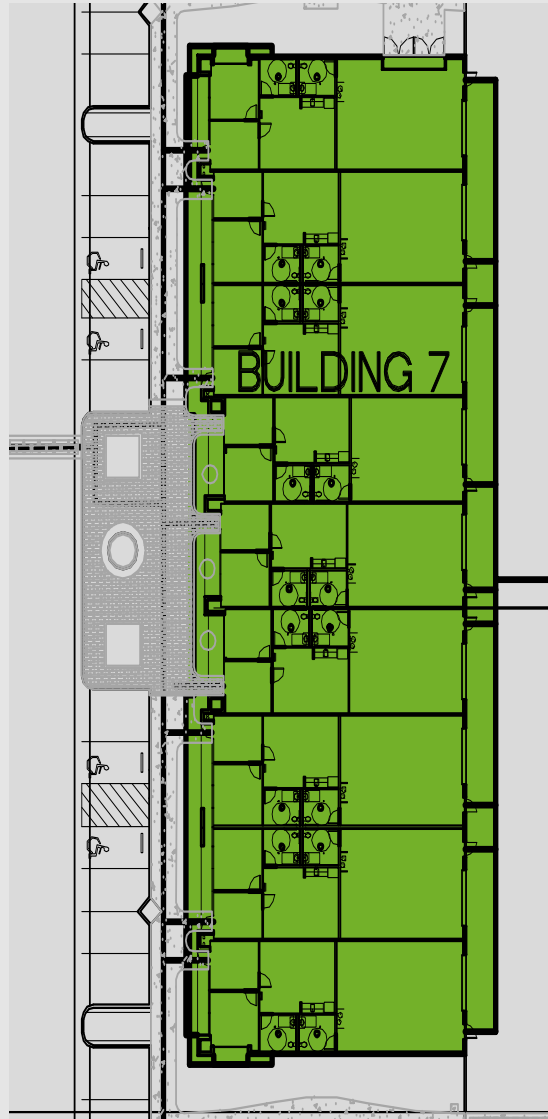
BUILDING 6 PLAN+



Building details

Building 6	Suites from 1,200–8,500 s.f.
Type	Multi-tenant
Office	40% office
Clear height	18'
Ground level doors	1 per suite
Power	800 Amps 120/208 volts
Fire	.50/2,000 system

BUILDING 7 PLAN+

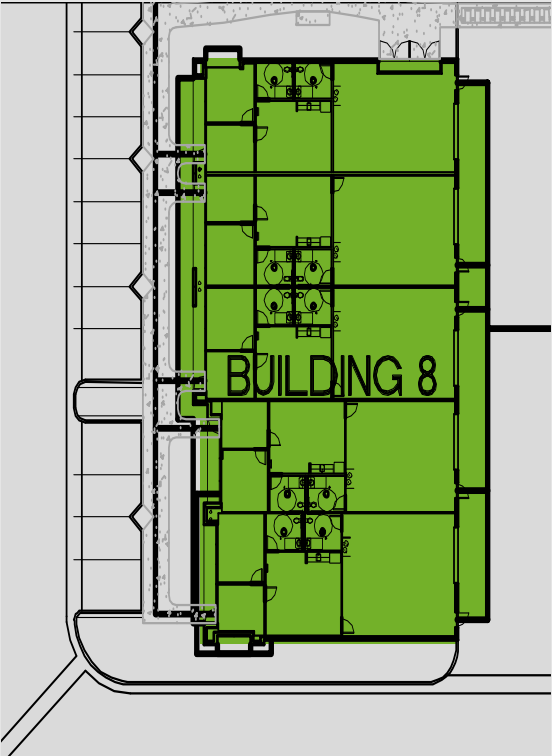
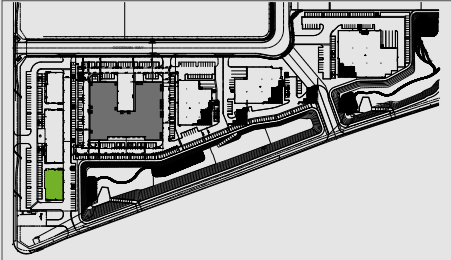


Building details

Building 7 Suites from 1,200–8,500 s.f.

Type	Multi-tenant
Office	40% office
Clear height	18'
Ground level doors	1 per suite
Power	800 Amps 120/208 volts
Fire	.50/2,000 system

BUILDING 8 PLAN+



Building details

Building 8	Suites from 1,200–8,500 s.f.
Type	Multi-tenant
Office	40% office
Clear height	18'
Ground level doors	1 per suite
Power	800 Amps 120/208 volts
Fire	.50/2,000 system





**Marks
The
Spot**

Goodman

Ward Mace

Vice President Entitlements and Construction

ward.mace@goodman.com

T+1 (949) 407 0142

Goodman

18201 Von Karman Avenue,

Suite 1170

Irvine, CA 92612

T +1 (949) 407 0100

info-us@goodman.com

us.goodman.com

Lee & Associates

Larry Null, SIOR

Senior Vice President

License# 00822133

lnull@leeriverside.com

T+1 (951) 276 3616

