

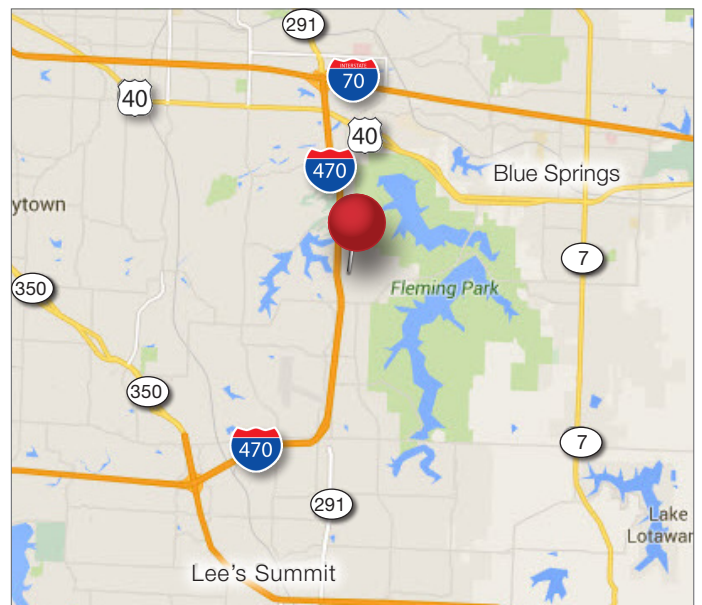
For Lease
**Office/
Warehouse**

Lakewood Business Park
Lee's Summit, MO



Property Features

- ± 2,700 SF light-industrial suite available
- ± 1,700 SF office on two-levels and ± 1,000 SF warehouse
- 19-21' Clear Height
- One (1) Dock-high loading door
- Located in Lakewood Business Park, just off of I-470 Highway and Woods Chapel Road, a great Lee's Summit location.
- \$9.50 PSF gross (\$2,137.50 per month) Plus CAM



For more information contact:

Joe O'Neill

+1 913 890 2010 • joe@nai-heartland.com

Nathan Anderson, SIOR, CCIM

+1 913 890 2001 • nathan@nai-heartland.com

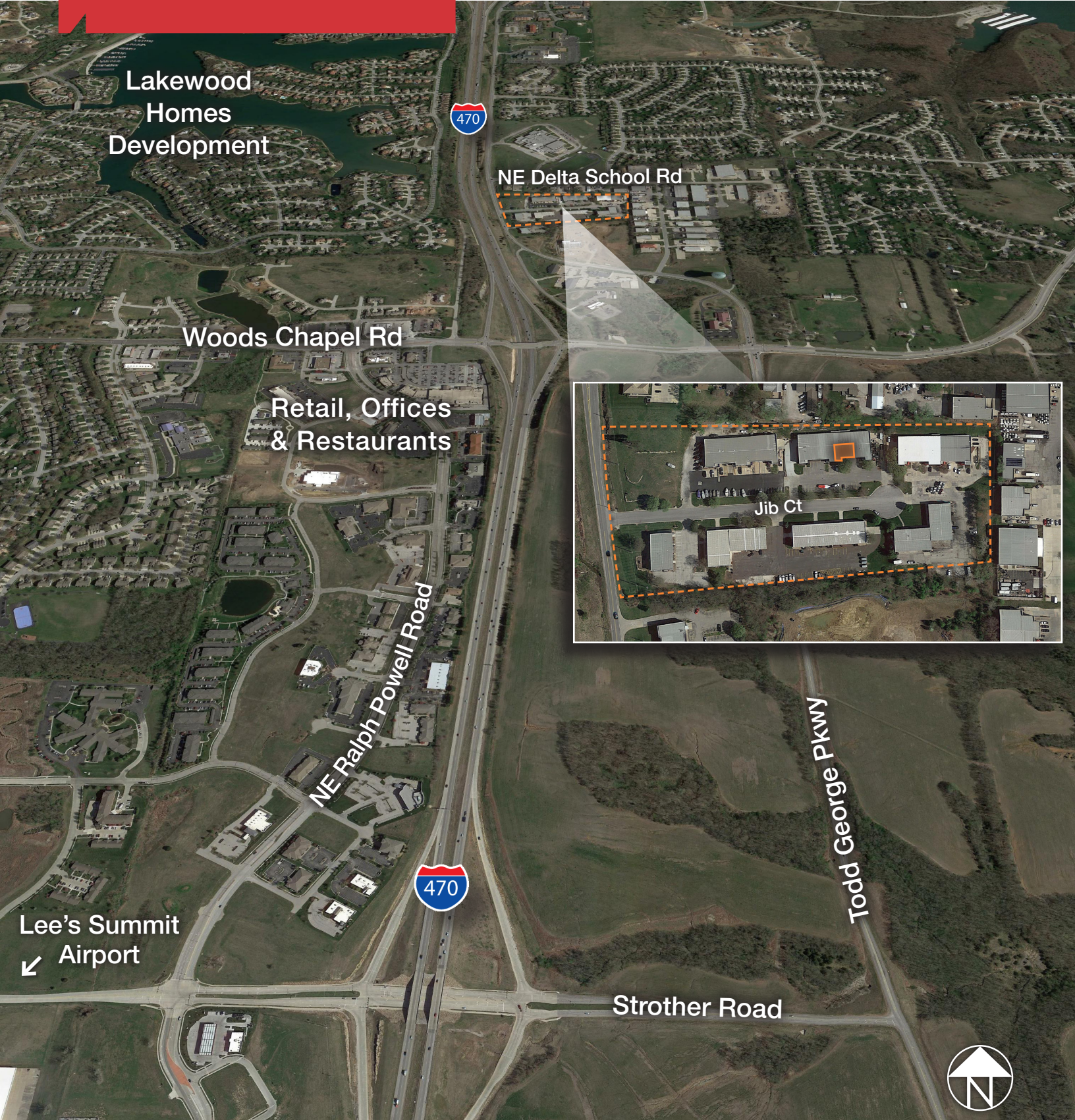
NO WARRANTY OR REPRESENTATION, EXPRESS OR IMPLIED, IS MADE AS TO THE ACCURACY OF THE INFORMATION CONTAINED HEREIN, AND THE SAME IS SUBMITTED SUBJECT TO ERRORS, OMISSIONS, CHANGE OF PRICE, RENTAL OR OTHER CONDITIONS, PRIOR SALE, LEASE OR FINANCING, OR WITHDRAWAL WITHOUT NOTICE, AND OF ANY SPECIAL LISTING CONDITIONS IMPOSED BY OUR PRINCIPALS NO WARRANTIES OR REPRESENTATIONS ARE MADE AS TO THE CONDITION OF THE PROPERTY OR ANY HAZARDS CONTAINED THEREIN ARE ANY TO BE IMPLIED.

4400 College Boulevard, Suite 170
Overland Park, Kansas 66211
+1 913 362 1000

nai-heartland.com

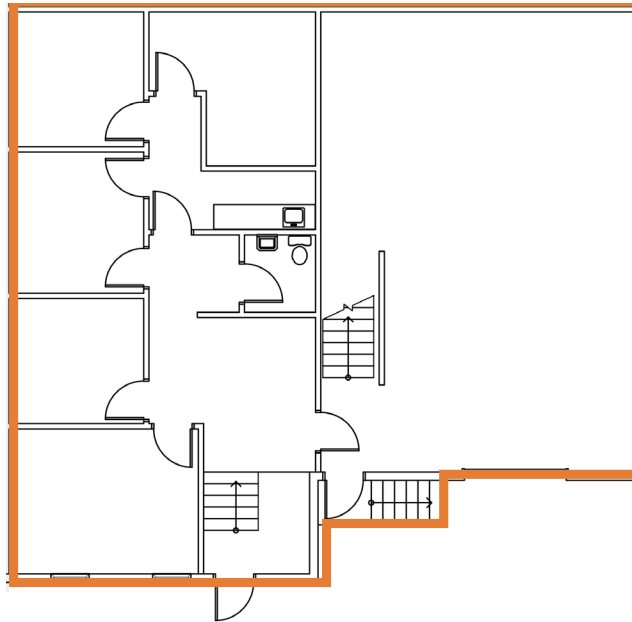
Lakewood Business Park
Space For Lease

Office/Warehouse for Lease
1024 Jib Court | Lee's Summit, MO



Lakewood Business Park
Space For Lease

1024-C Jib Ct. - Floor Plan



1024-C Space Details

- Available Space: ±2,700 SF
- Office Size: ±1,700 SF office
- Warehouse: ±1,000 SF
- Loading: (1) Dock-high door
- Clear Height: 19-21'
- Lease Rate: \$2,137.50 per month, plus CAM

*Common Area Maintenance (CAM) includes lawn care, snow and ice removal, trash service, water, sewer, exterior lighting, etc.



For more information contact:

Joe O'Neill

+1 913 890 2010 • joe@nai-heartland.com

Nathan Anderson, SIOR, CCIM

+1 913 890 2001 • nathan@nai-heartland.com



4400 College Boulevard, Suite 170
Overland Park, Kansas 66211
+1 913 362 1000
nai-heartland.com