



FOR  
LEASE

## SILVER STAR COMMERCE CENTER #3

3702 -3724 SILVER STAR RD | ORLANDO, FL | UP TO 10,800 SF AVAILABLE



CITE PARTNERS

## PROPERTY SPECIFICATIONS

### SUITE 3702

- 10,800 SF
- Dock loading
- Available Sept 2018

### SUITE 3712

- 3,300 SF
- Dock loading

### THE PROPERTY

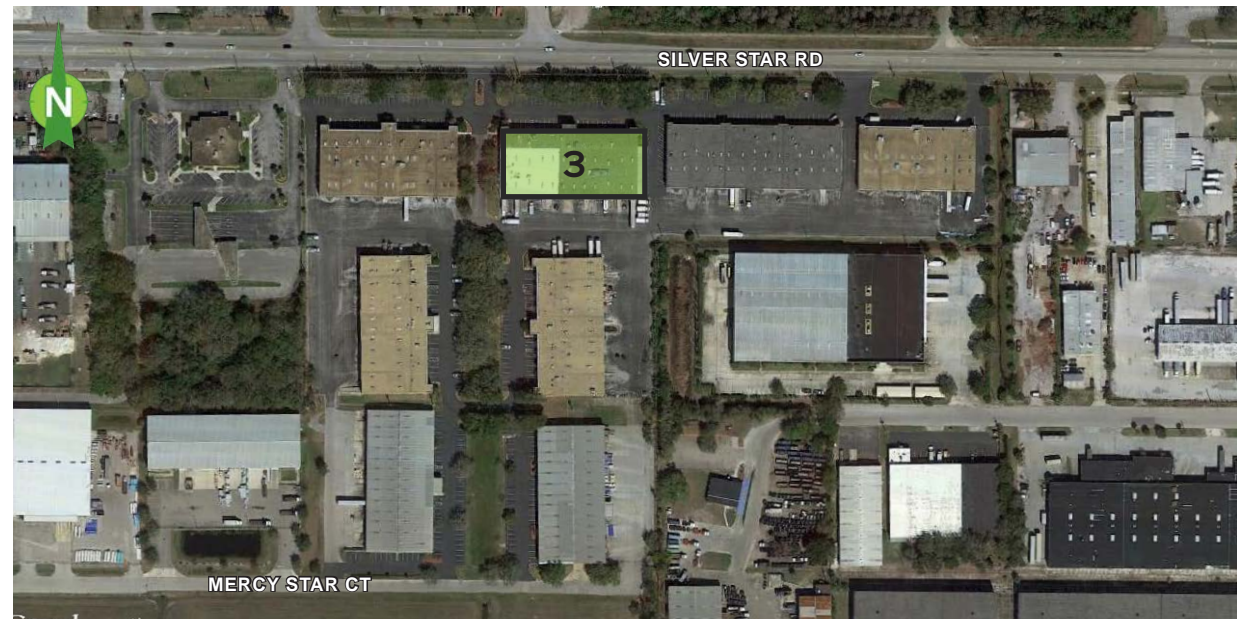
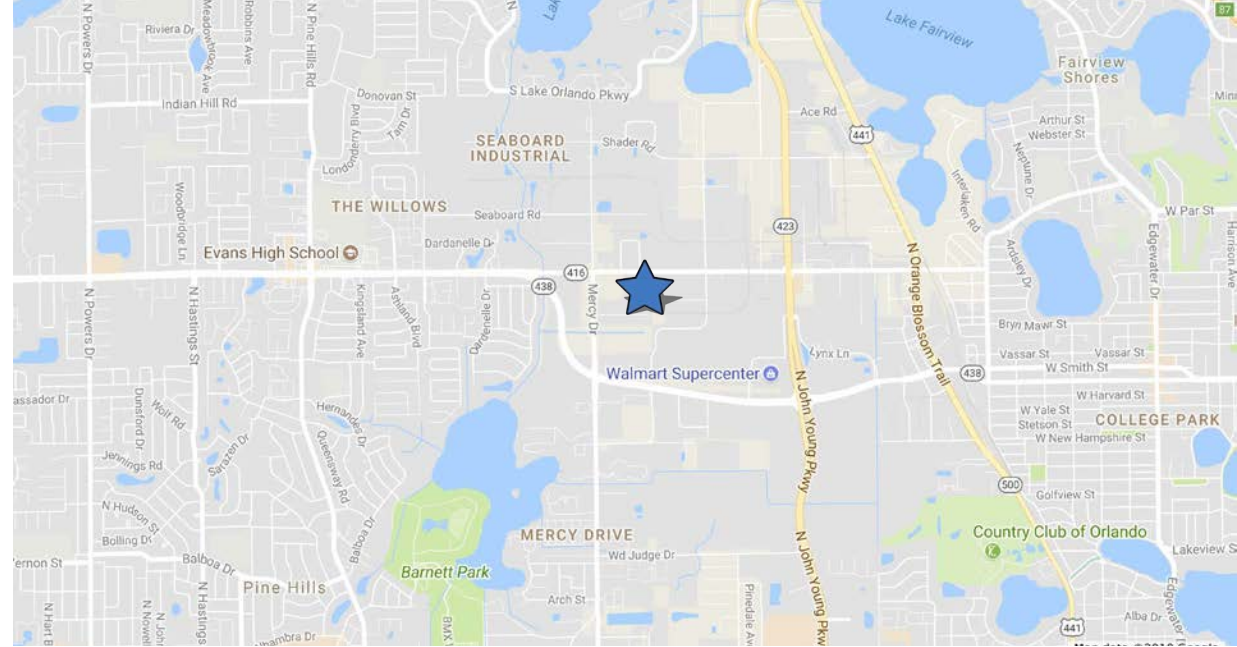
- 31,200 SF total
- 18'± clear height
- Dock and ramp doors
- Rear load
- Block construction
- Built in 1983
- Zoned I-P/W, City of Orlando
- Frontage on Silver Star Road

### LOCATION

- Excellent access to John Young Parkway, US Hwy 441, Lee Rd and Edgewater Dr
- Minutes from Interstate 4 and Colonial Dr

### THE PRICE

\$6.50-\$7.50/SF, NNN



**MATT SULLIVAN, SIOR, CCIM**  
Managing Director, Principal  
matt.sullivan@citepartners.com  
407.930.1802

**WILSON MCDOWELL, SIOR, CCIM**  
Managing Director, Principal  
wilson.mcdowell@citepartners.com  
407.930.1801

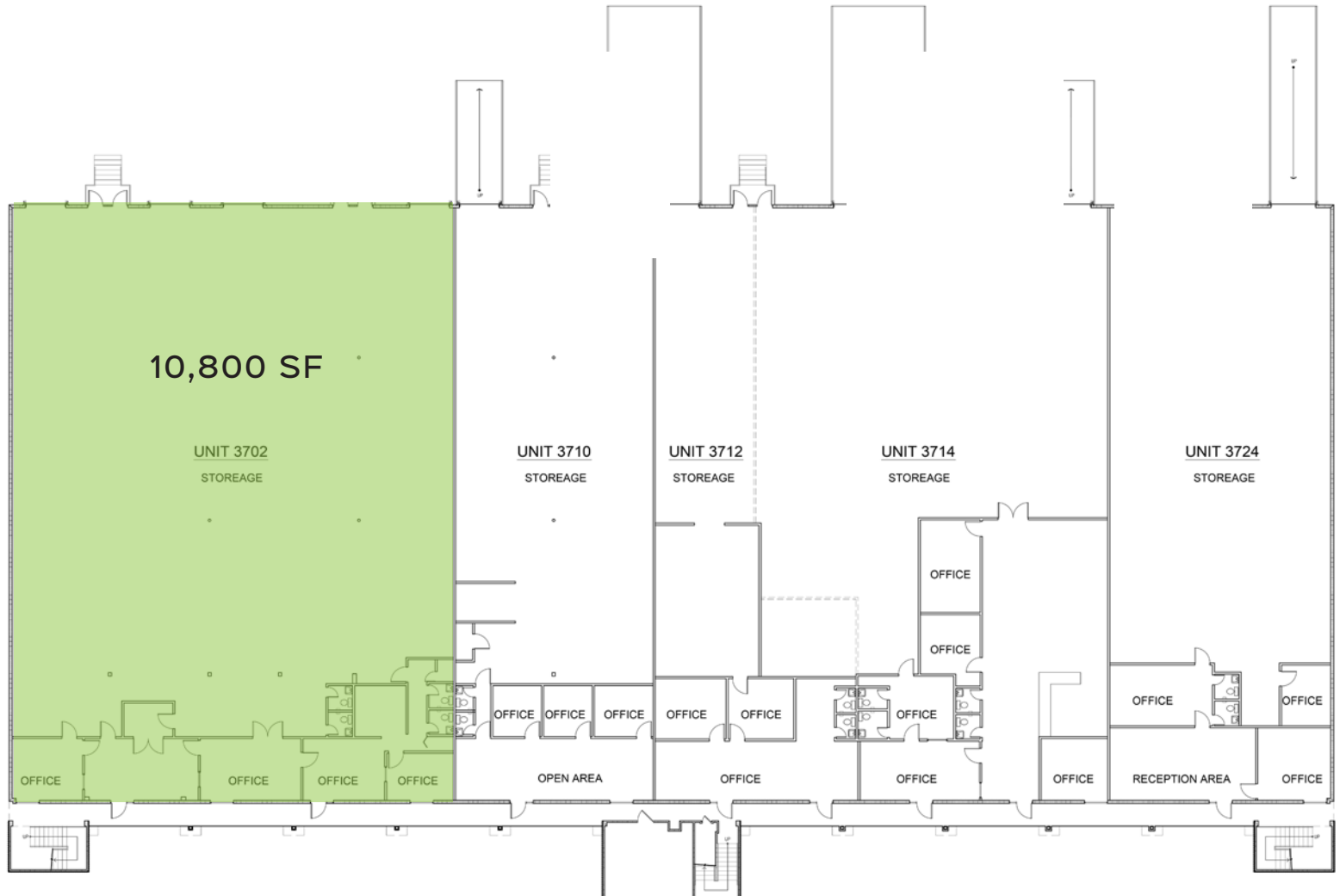
**BOBBY ISOLA, SIOR, CCIM**  
Director, Principal  
bobby.isola@citepartners.com  
407.930.1804

**CITE PARTNERS**  
100 East Pine Street, Suite 200  
Orlando, FL 32801  
www.citepartners.com

#### Disclaimer:

This document has been prepared by Cite Partners for advertising and general information only. Cite Partners makes no guarantees, representations or warranties of any kind, expressed or implied, regarding the information including, but not limited to, warranties of content, accuracy and reliability. Any interested party should undertake their own inquiries as to the accuracy of the information. Cite Partners excludes unequivocally all inferred or implied terms, conditions and warranties arising out of this document and excludes all liability for loss and damages arising therefrom. This publication is the copyrighted property of Cite Partners and/or its licensor(s). All rights reserved.

FLOOR PLAN | SUITE 3702



# Silver Star Commerce Center #3

## FLOOR PLAN | SUITE 3712

