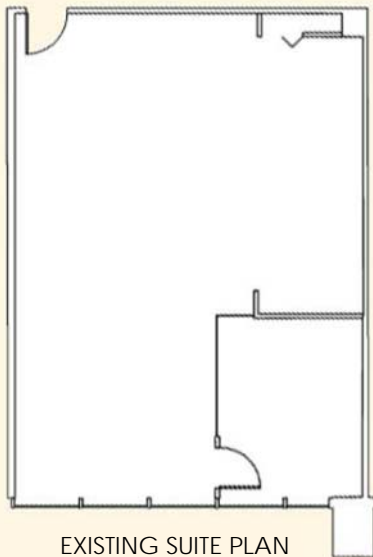


# LakeView at Hidden River

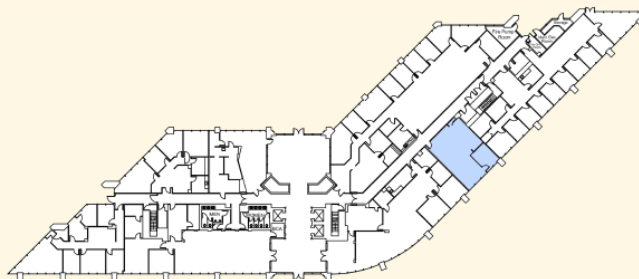
8875 Hidden River Parkway, Tampa, Florida 33637



EXISTING SUITE PLAN

## SUITE 170

- 1,104 Rentable square feet
- Move-in ready
- 1 Private Office
- Open space for work stations



BUILDING FLOOR PLAN



Osprey Real Estate Services  
400 Carillon Parkway, St. Petersburg, FL 33716  
www.ospreyres.com



Wendy Giffin  
wgiffin@ospreyres.com  
727.565.0751

No warranty of representation, expressed or implied, is made to the accuracy of information contained herein, and same is submitted subject to errors, change of price, rental or other conditions, withdrawal without notice, and to any special listing conditions, imposed by our principals.

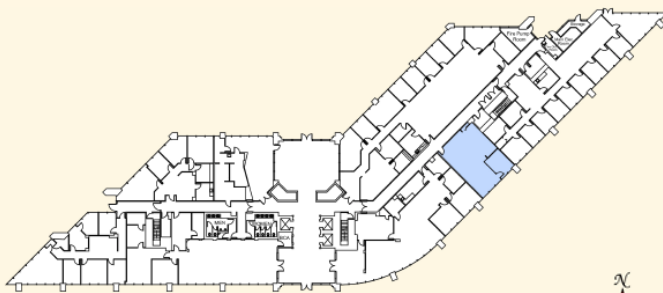
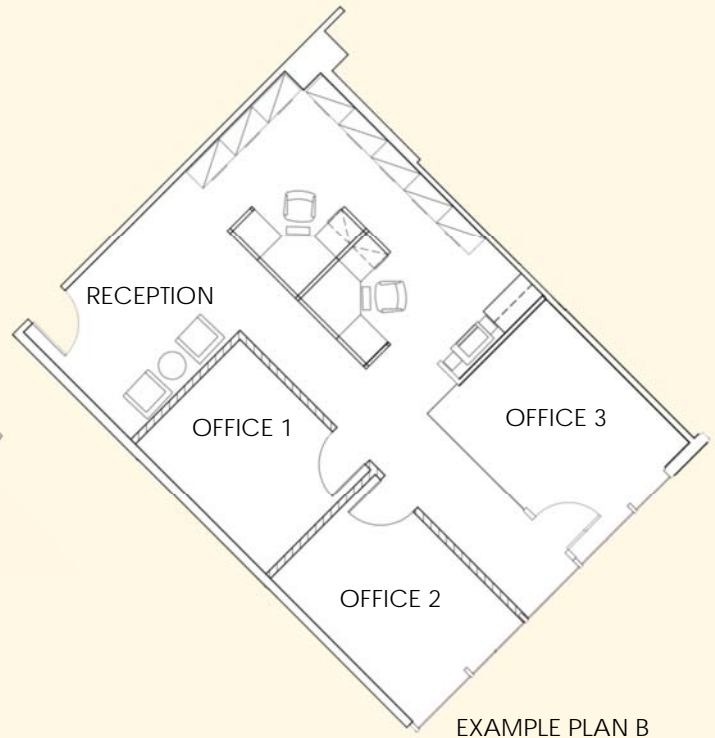
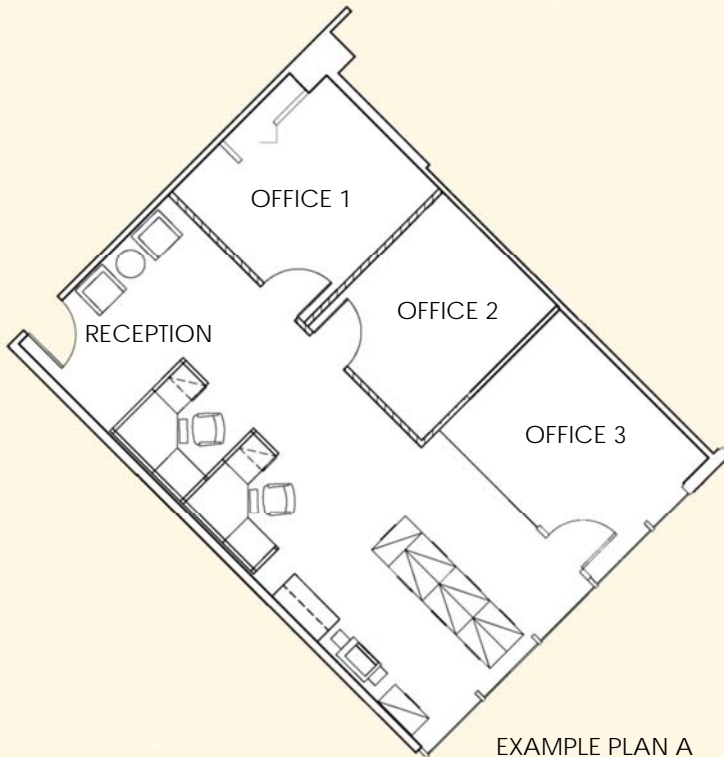
# LakeView at Hidden River

8875 Hidden River Parkway, Tampa, Florida 33637

## EXAMPLE LAYOUTS

Suite 170

1,104 RSF



LAKEVIEW 1ST FLOOR PLAN



HIDDEN RIVER CORPORATE PARK



Osprey Real Estate Services

400 Carillon Parkway St. Petersburg, FL 33716

[www.ospreyres.com](http://www.ospreyres.com)

Wendy Giffin  
[wgiffin@ospreyres.com](mailto:wgiffin@ospreyres.com)  
727.565.0751

No warranty of representation, expressed or implied, is made to the accuracy of information contained herein, and same is submitted subject to errors, change of price, rental or other conditions, withdrawal without notice, and to any special listing conditions, imposed by our principals.