



RKREALTY@RURALKING.COM
217.235.9050

I-57 INTERCHANGE LAND

Mattoon, Illinois



HIGHLIGHTS

- Large and small land parcels available at the crossroads of Interstate 57 and State Route 16, which provides excellent access to all of the population surrounding the Charleston-Mattoon market
- Located in the primary shopping destination in the Charleston-Mattoon Micropolitan Statistical Area, which has a trade area population of 101,319
- Join Rural King, Marshalls (coming spring 2020), JCPenney, and JoAnn, The Home Depot, Walmart, AMC Theatres, PetSmart and many other retailers located at this interchange
- The market draws from up to 30 miles in all directions
- These sites benefit from being close to Lake Land College and Eastern Illinois University, which have 5,000 and 7,415 students enrolled, respectively
- The strong employment base in this community includes LSC Communications, Rural King corporate headquarters and distribution center, Sarah Bush Lincoln Health Center, Eastern Illinois University, Consolidated Communications, Lake Land College, First Mid-Illinois Bank & Trust, and Pinnacle Foods

DEMOGRAPHICS

POPULATION	5 MILE	10 MILE	15 MILE	20 MILE	30 MILE
2022 Projection	21,709	49,058	63,550	85,499	148,250
2017 Estimate	20,998	47,791	62,296	84,195	147,737
INCOME	5 MILE	10 MILE	15 MILE	20 MILE	30 MILE
2017 Average	\$56,860	\$57,325	\$59,643	\$60,065	\$63,607
2017 Median	\$43,269	\$40,491	\$43,845	\$45,220	\$48,922
DAYTIME POPULATION	5 MILE	10 MILE	15 MILE	20 MILE	30 MILE
2017 Employees	15,959	25,054	28,606	37,375	66,290

LEASING INFORMATION



ALEX JUSTICE
alexandria@goodmanrealestate.com
216.381.8200

BOBBY BENJAMIN
bobby@goodmanrealestate.com
216.381.8200

in conjunction with



BLAKE PIERCE
rkrealty@ruralking.com
217.235.9050



ALEX JUSTICE
alexandria@goodmanrealestate.com
216.381.8200

BOBBY BENJAMIN
bobby@goodmanrealestate.com
216.381.8200

in
conjunction
with



BLAKE PIERCE
rkrealty@ruralking.com
217.235.9050

MATTOON I-57 INTERCHANGE LAND

Mattoon, Illinois





ALEX JUSTICE
alexandria@goodmanrealestate.com
216.381.8200

BOBBY BENJAMIN
bobby@goodmanrealestate.com
216.381.8200

in
conjunction
with

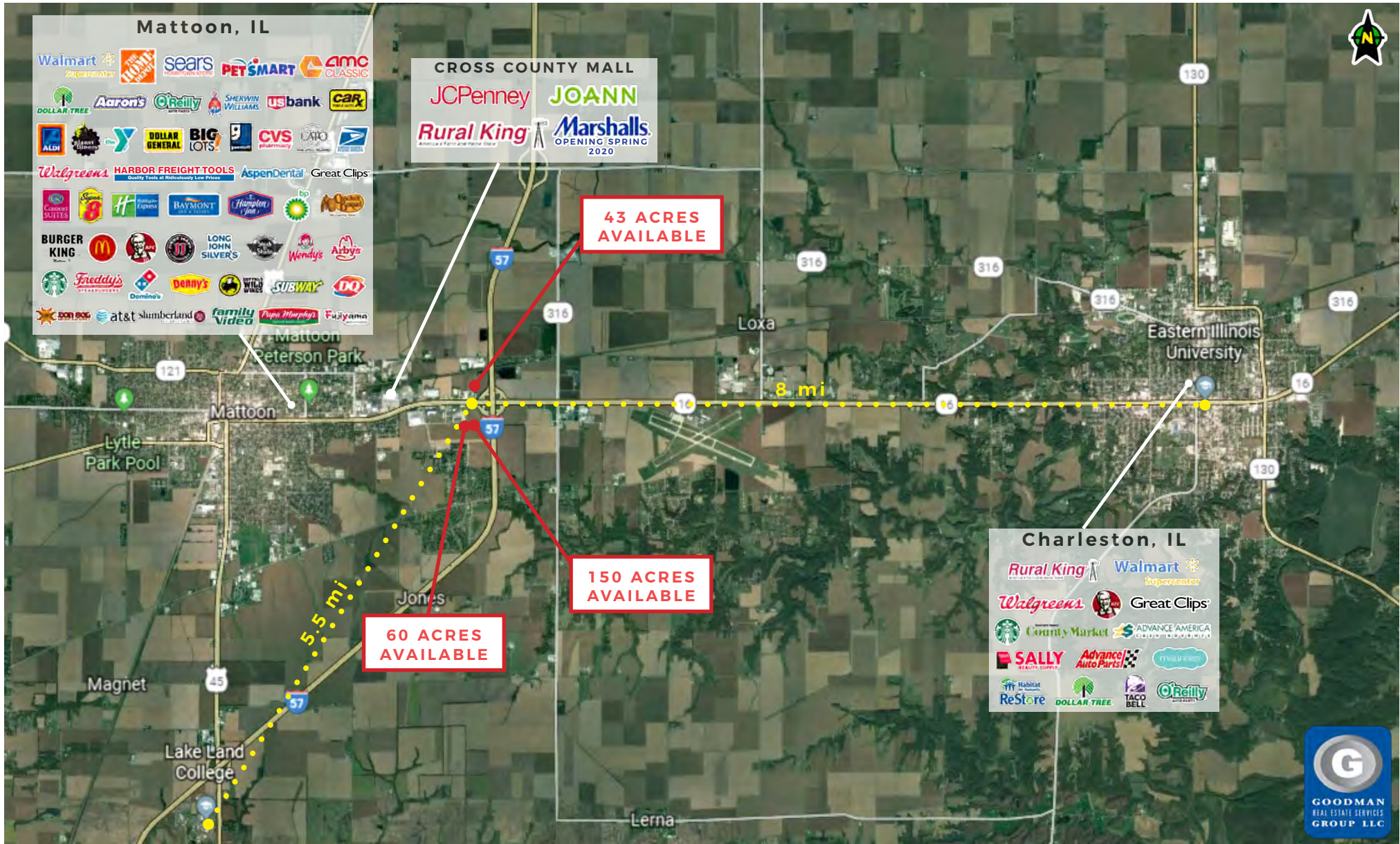


BLAKE PIERCE
rkrealty@ruralking.com
217.235.9050

MATTOON I-57 INTERCHANGE LAND

Mattoon, Illinois

MICROPOLITAN STATISTICAL AREA



THE INFORMATION ABOVE HAS BEEN OBTAINED FROM SOURCES BELIEVED TO BE RELIABLE. GOODMAN REAL ESTATE SERVICES GROUP LLC AND ITS AGENTS, ASSOCIATES, AND EMPLOYEES MAKE NO GUARANTEE, WARRANTY OR REPRESENTATION ABOUT IT. ALL IMAGES CONTAINED HEREIN ARE THE PROPERTY OF GOODMAN REAL ESTATE SERVICES GROUP LLC AND SHALL NOT BE DUPLICATED OR REPRODUCED WITHOUT EXPRESS WRITTEN CONSENT OF GOODMAN REAL ESTATE SERVICES GROUP LLC. YOU ACKNOWLEDGE THAT, AS REQUIRED BY THE STATE OF OHIO, YOU HAVE RECEIVED THE CONSUMER GUIDE TO AGENCY RELATIONSHIPS.





ALEX JUSTICE
alexandria@goodmanrealestate.com
216.381.8200

BOBBY BENJAMIN
bobby@goodmanrealestate.com
216.381.8200

in
conjunction
with

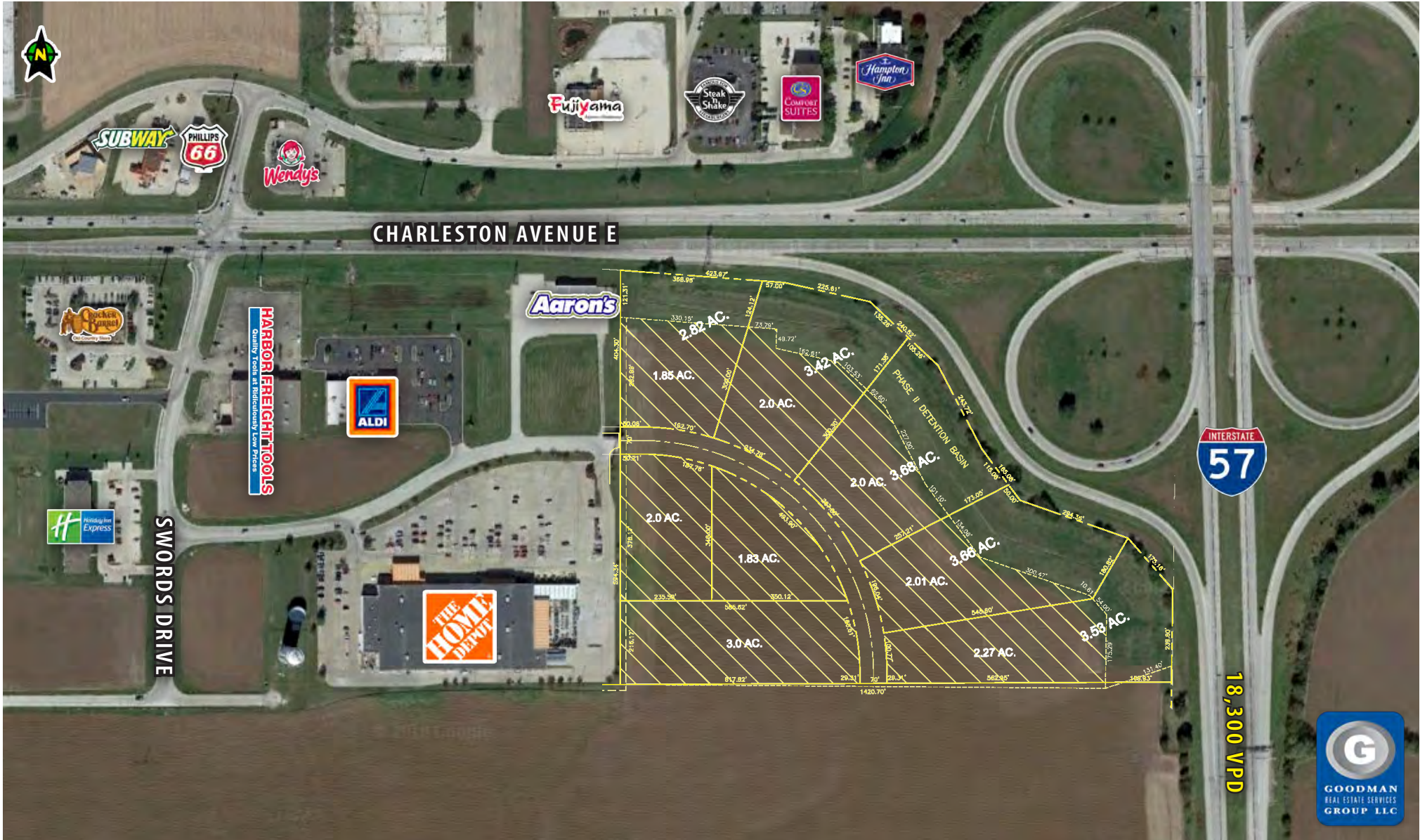


BLAKE PIERCE
rkrealty@ruralking.com
217.235.9050

MATTOON I-57 INTERCHANGE LAND

Mattoon, Illinois

PROPOSED LAND DIVISION EAST OF HOME DEPOT



THE INFORMATION ABOVE HAS BEEN OBTAINED FROM SOURCES BELIEVED TO BE RELIABLE. GOODMAN REAL ESTATE SERVICES GROUP LLC AND ITS AGENTS, ASSOCIATES, AND EMPLOYEES MAKE NO GUARANTEE, WARRANTY OR REPRESENTATION ABOUT IT. ALL IMAGES CONTAINED HEREIN ARE THE PROPERTY OF GOODMAN REAL ESTATE SERVICES GROUP LLC AND SHALL NOT BE DUPLICATED OR REPRODUCED WITHOUT EXPRESS WRITTEN CONSENT OF GOODMAN REAL ESTATE SERVICES GROUP LLC. YOU ACKNOWLEDGE THAT, AS REQUIRED BY THE STATE OF OHIO, YOU HAVE RECEIVED THE CONSUMER GUIDE TO AGENCY RELATIONSHIPS.





ALEX JUSTICE
alexandria@goodmanrealestate.com
216.381.8200

BOBBY BENJAMIN
bobby@goodmanrealestate.com
216.381.8200

in
conjunction
with



BLAKE PIERCE
rkrealty@ruralking.com
217.235.9050

MATTOON I-57 INTERCHANGE LAND

Mattoon, Illinois





ALEX JUSTICE
alexandria@goodmanrealestate.com
216.381.8200

BOBBY BENJAMIN
bobby@goodmanrealestate.com
216.381.8200

in
conjunction
with



BLAKE PIERCE
rkrealty@ruralking.com
217.235.9050

MATTOON I-57 INTERCHANGE LAND

Mattoon, Illinois



60 ACRES
AVAILABLE

Walmart *
Supercenter

DETRO DRIVE

**MURPHY
USA**





ALEX JUSTICE
alexandria@goodmanrealestate.com
216.381.8200

BOBBY BENJAMIN
bobby@goodmanrealestate.com
216.381.8200

in
conjunction
with



BLAKE PIERCE
rkrealty@ruralking.com
217.235.9050

MATTOON I-57 INTERCHANGE LAND

Mattoon, Illinois

