

AVAILABLE FOR LEASE

1913 Greentree Road Cherry Hill, New Jersey 08003

PROFESSIONAL OFFICE SPACE FOR LEASE
EXCELLENT LOCATION WITH HIGH VISIBILITY



Property Information

BUILDING SIZE	7,000 SF
AVAILABILITIES	3,300 SF (divisible) Unit B: 1,100 SF Unit C: 1,100 SF Unit D: 1,100 SF
BUILDING INFORMATION	Handicap accessible Ample parking Excellent signage
LEASE RATE	\$16.50 psf modified gross plus gas, electric and janitorial
TRANSIT INFORMATION	Easily accessed by the 406 NJ Transit bus line; approximately a two minute walk

Contact Information:

Rebecca Ting, SIOR
+1 856 234 9600 ext 206
rebecca.ting@naimertz.com

Julie Kronfeld SIOR
+1 856 802 6516
julie.kronfeld@naimertz.com

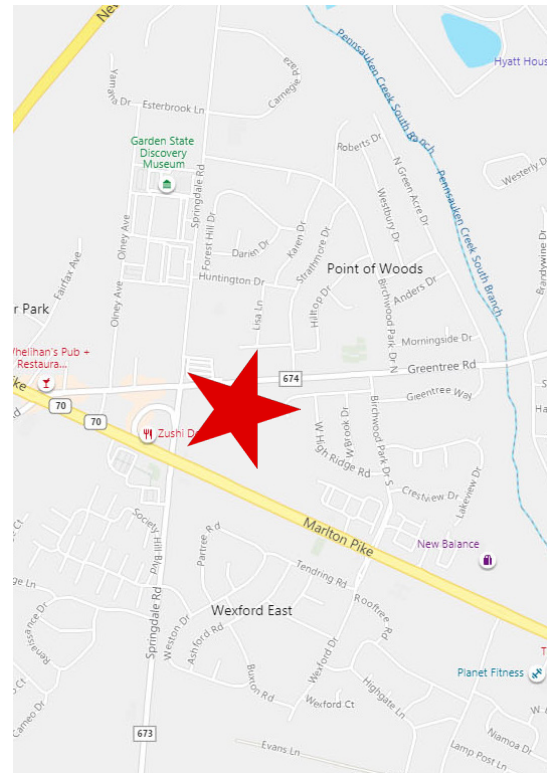
NAI Mertz | 21 Roland Avenue
Mount Laurel, NJ 08054
+1 856 234 9600 | naimertz.com

NO WARRANTY OR REPRESENTATION, EXPRESS OR IMPLIED, IS MADE AS TO THE ACCURACY OF THE INFORMATION CONTAINED HEREIN, AND THE SAME IS SUBMITTED SUBJECT TO ERRORS, OMISSIONS, CHANGE OF PRICE, RENTAL OR OTHER CONDITIONS, PRIOR SALE, LEASE OR FINANCING, OR WITHDRAWAL WITHOUT NOTICE, AND OF ANY SPECIAL LISTING CONDITIONS IMPOSED BY OUR PRINCIPALS NO WARRANTIES OR REPRESENTATIONS ARE MADE AS TO THE CONDITION OF THE PROPERTY OR ANY HAZARDS CONTAINED THEREIN ARE ANY TO BE IMPLIED.

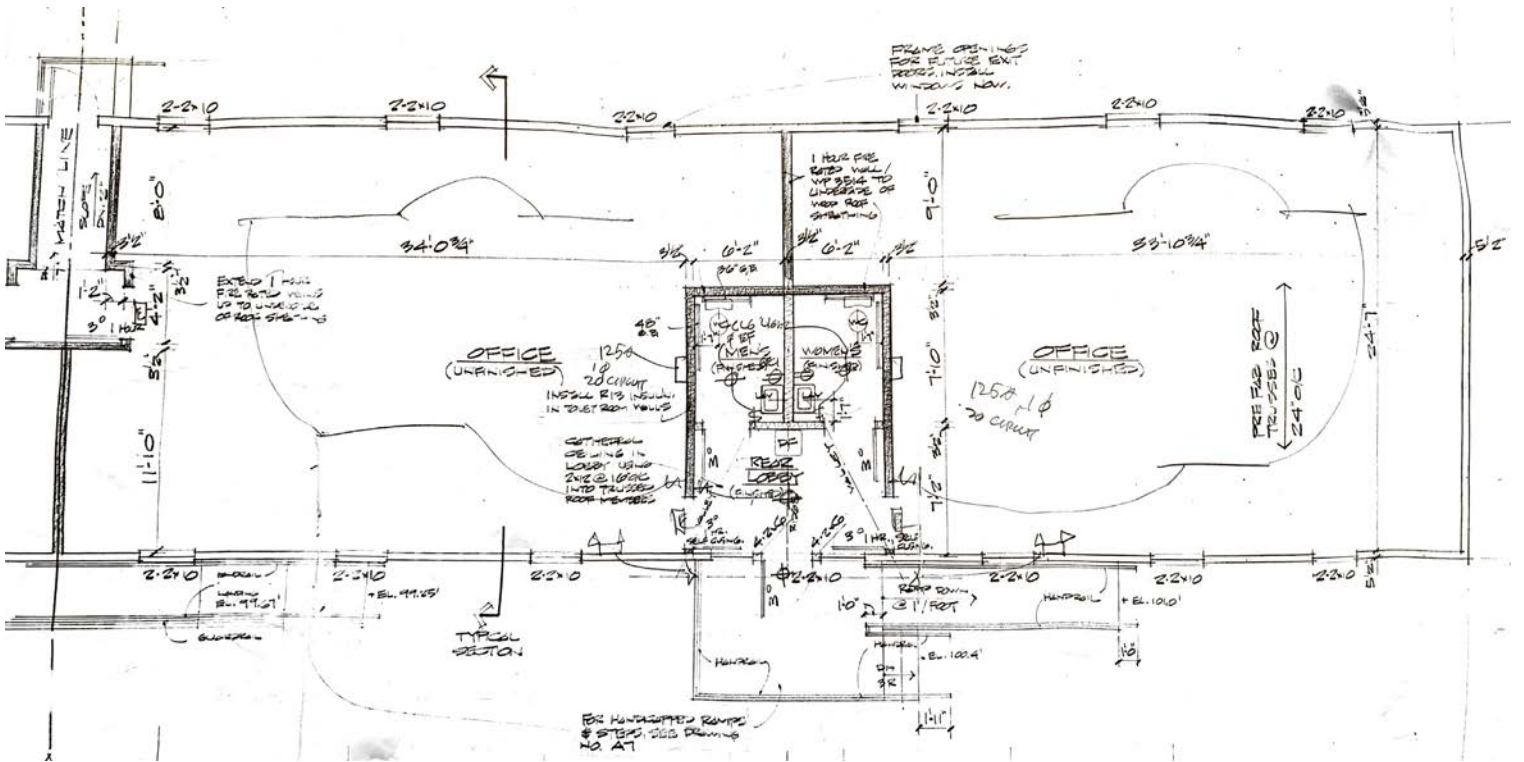
NAI Mertz

1913 Greentree Road | Cherry Hill, NJ

Location



Floor Plan



Rebecca Ting, SIOR
+1 856 234 9600 ext 206
rebecca.ting@naimertz.com

Julie Kronfeld SIOR
+1 856 802 6516
julie.kronfeld@naimertz.com



21 Roland Avenue | Mount Laurel, NJ 08054
+1 856 234 9600 | naimertz.com